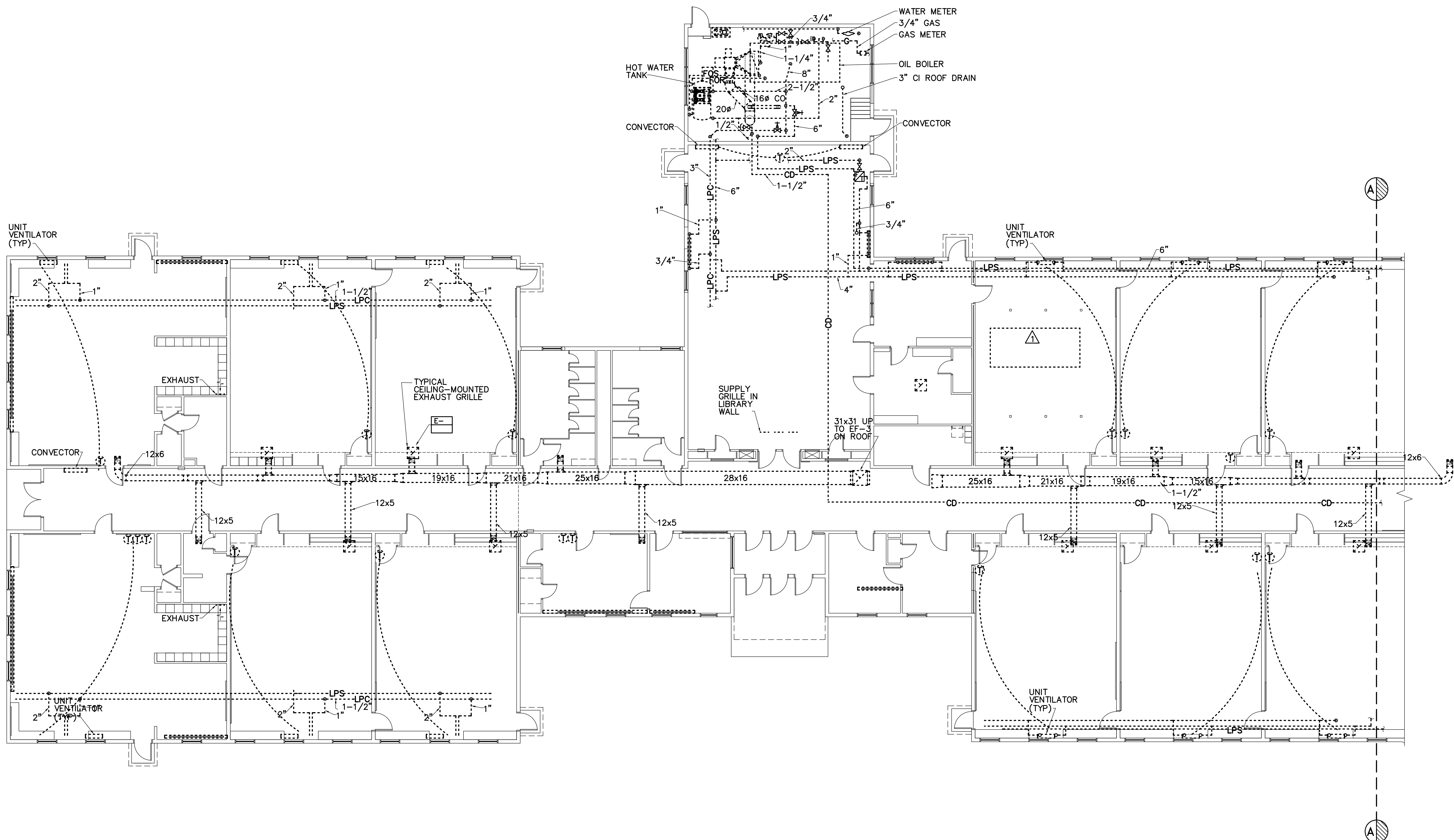


**DRAWING NOTES**

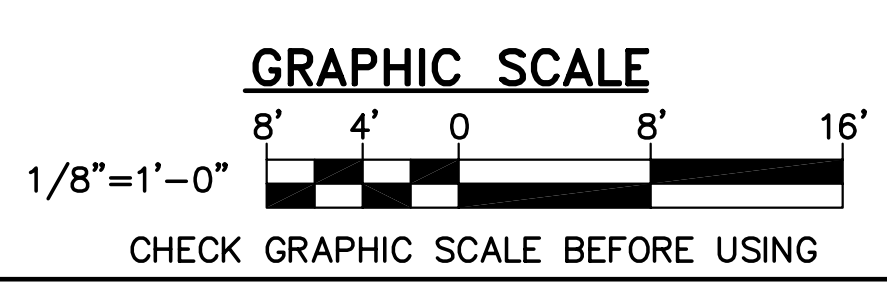
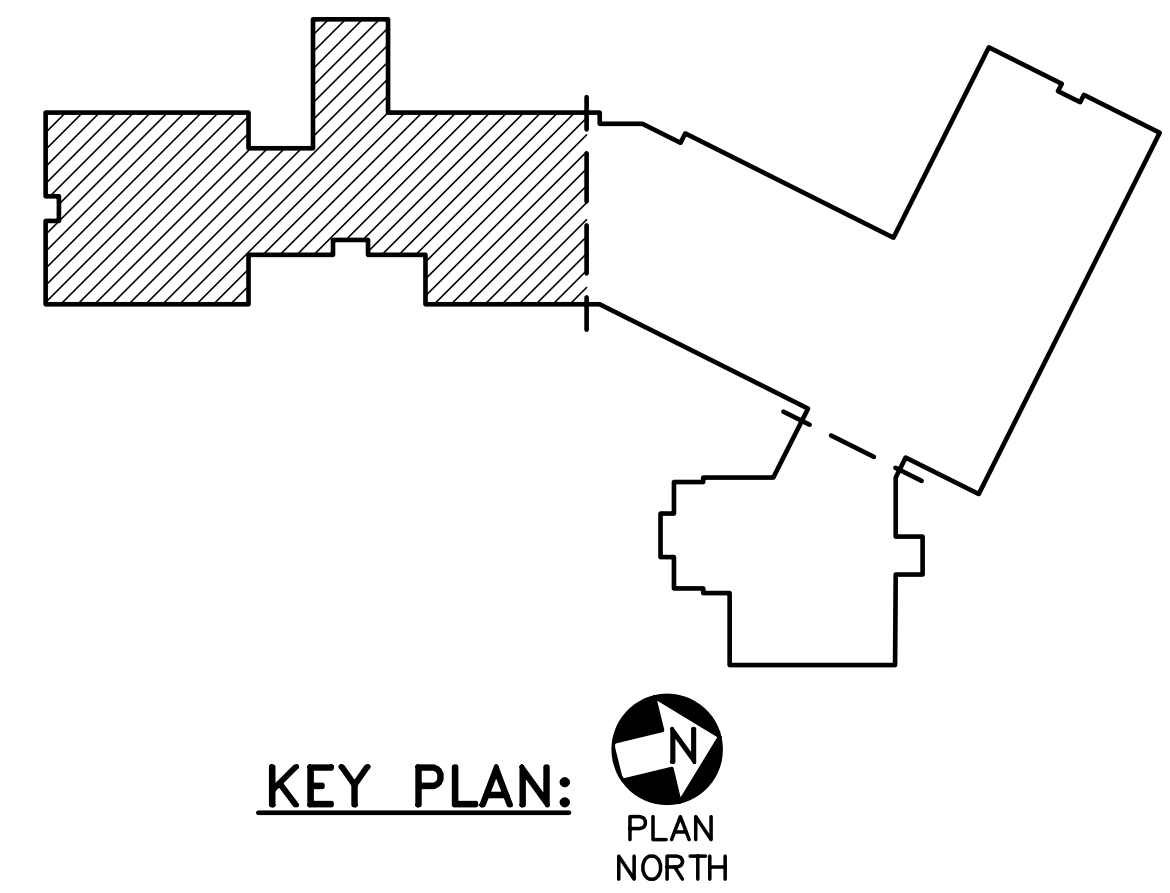
1. REMOVALS INDICATED ON THIS DRAWING SHALL BE COMPLETED DURING PHASE 3.
2. PIPING AND PLUMBING SYSTEMS THAT ARE TO BE REMOVED DURING PHASE 3 SHALL REMAIN FULLY OPERATIONAL DURING PHASES 1 AND 2.

**DRAWING KEYNOTES**

- △ REMOVE RTU-1 FROM ROOF ABOVE AND ASSOCIATED DUCTWORK SERVING LIBRARY. REFRIGERANT SHALL BE RECLAIMED BY A LICENSED REFRIGERATION MECHANIC IN ACCORDANCE WITH FEDERAL, STATE AND LOCAL CODES PRIOR TO RTU REMOVAL.



**1 MECHANICAL REMOVALS PART PLAN**  
 MD101/ SCALE: 1/8"=1'-0"  
 PLAN NORTH



		STATE OF MAINE <b>PUBLIC SCHOOL PROJECT</b>	
		TITLE: PORTLAND PUBLIC SCHOOLS NEW FRED P. HALL ELEMENTARY SCHOOL LOCATION: 53 OROND ROAD, PORTLAND, ME TITLE THIS DWG: <b>MECHANICAL REMOVALS PART PLAN</b>	
DRAWN BY: KLG CHECKED BY: MSA		OAK POINT ASSOCIATES DRAWING NO. <b>MD101</b> SHEET NO. <b>234</b> OF <b>312</b>	
NO.	DATE	DESCRIPTION	BY
REVISIONS			
DATE: 03/17/17		231 Main Street, Biddeford, Maine 04005 207.283.2193	