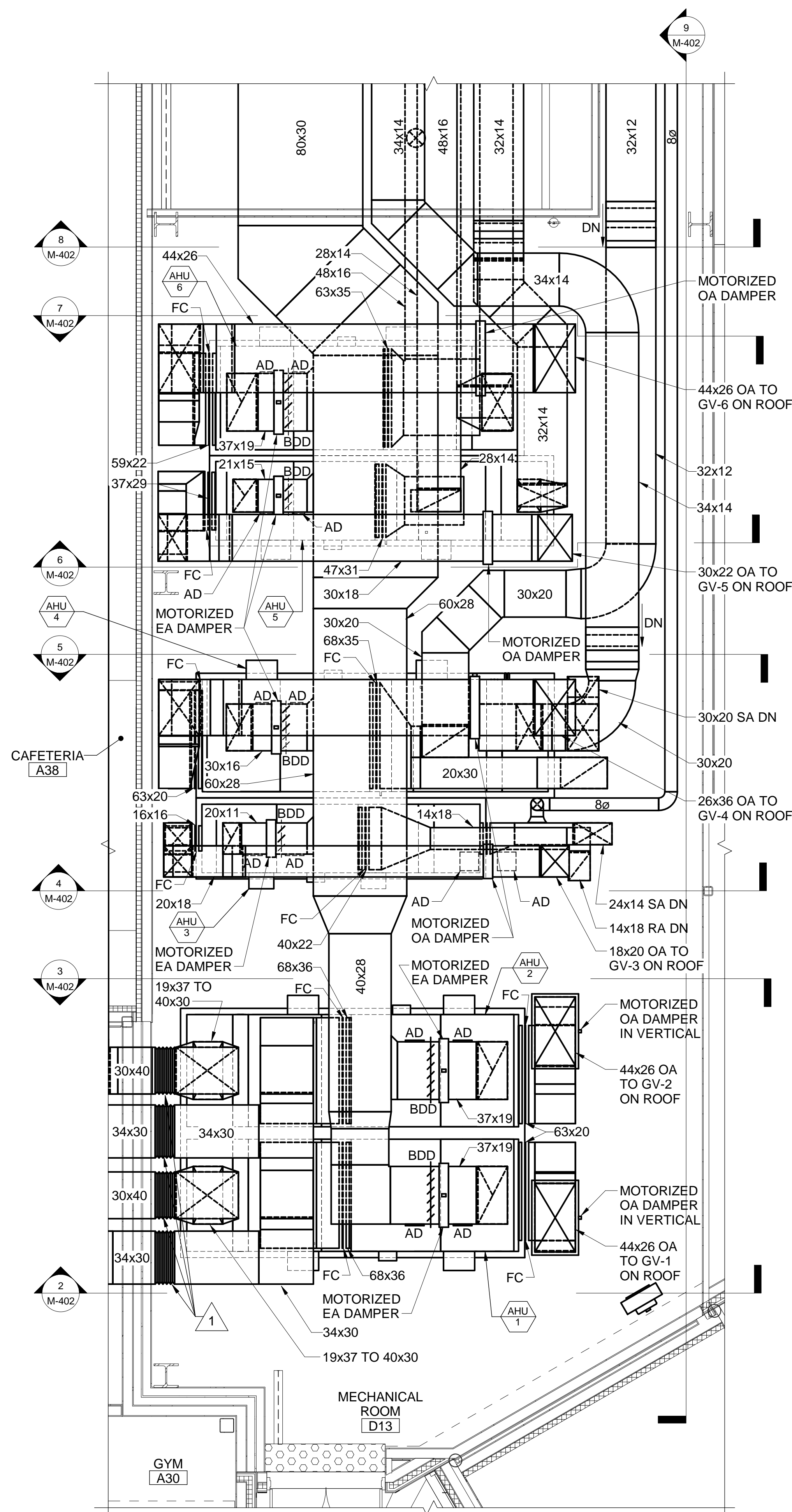


**DRAWING NOTES**

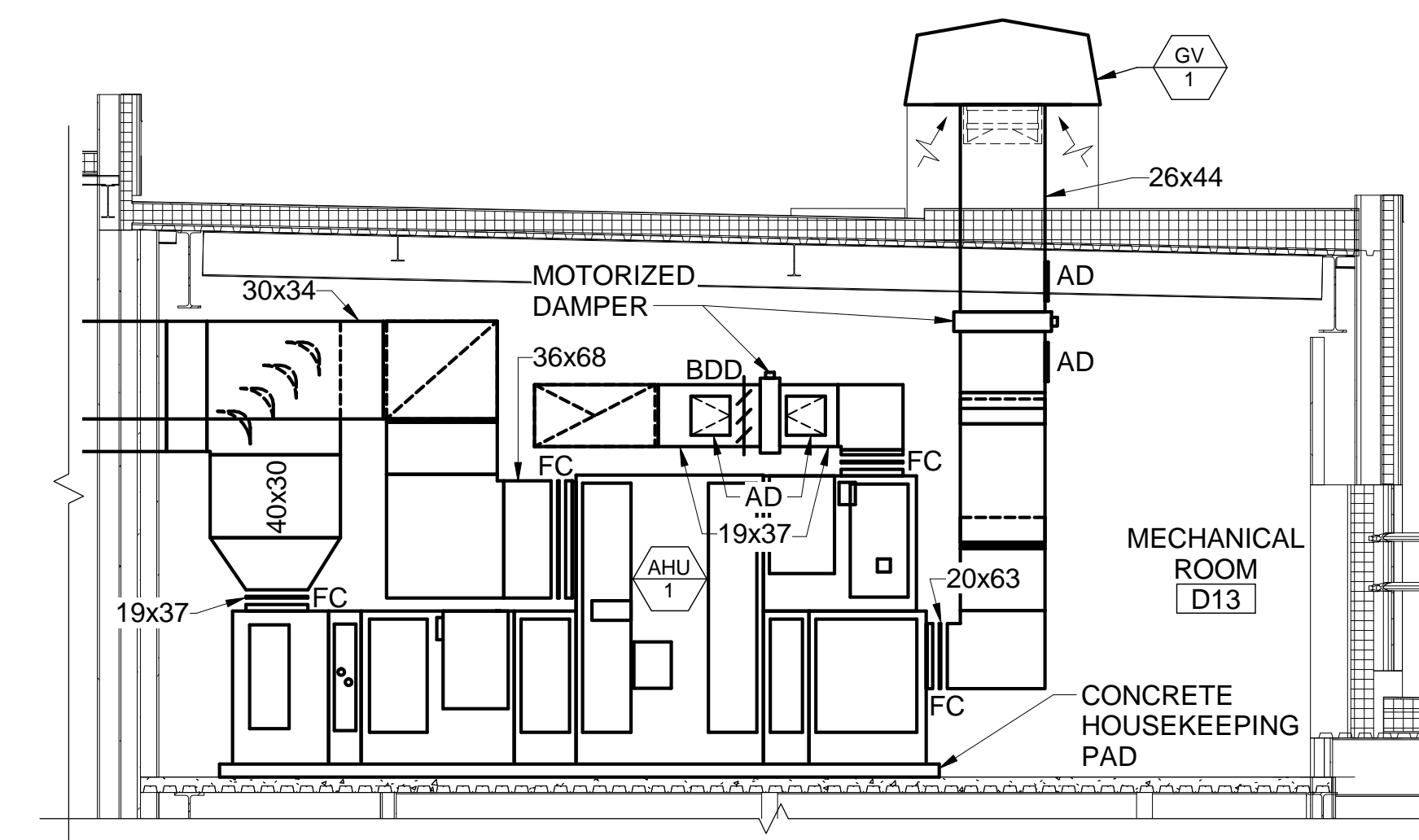
1. PROVIDE TURNING VANES IN SQUARE ELBOWS.

**DRAWING KEYNOTES**

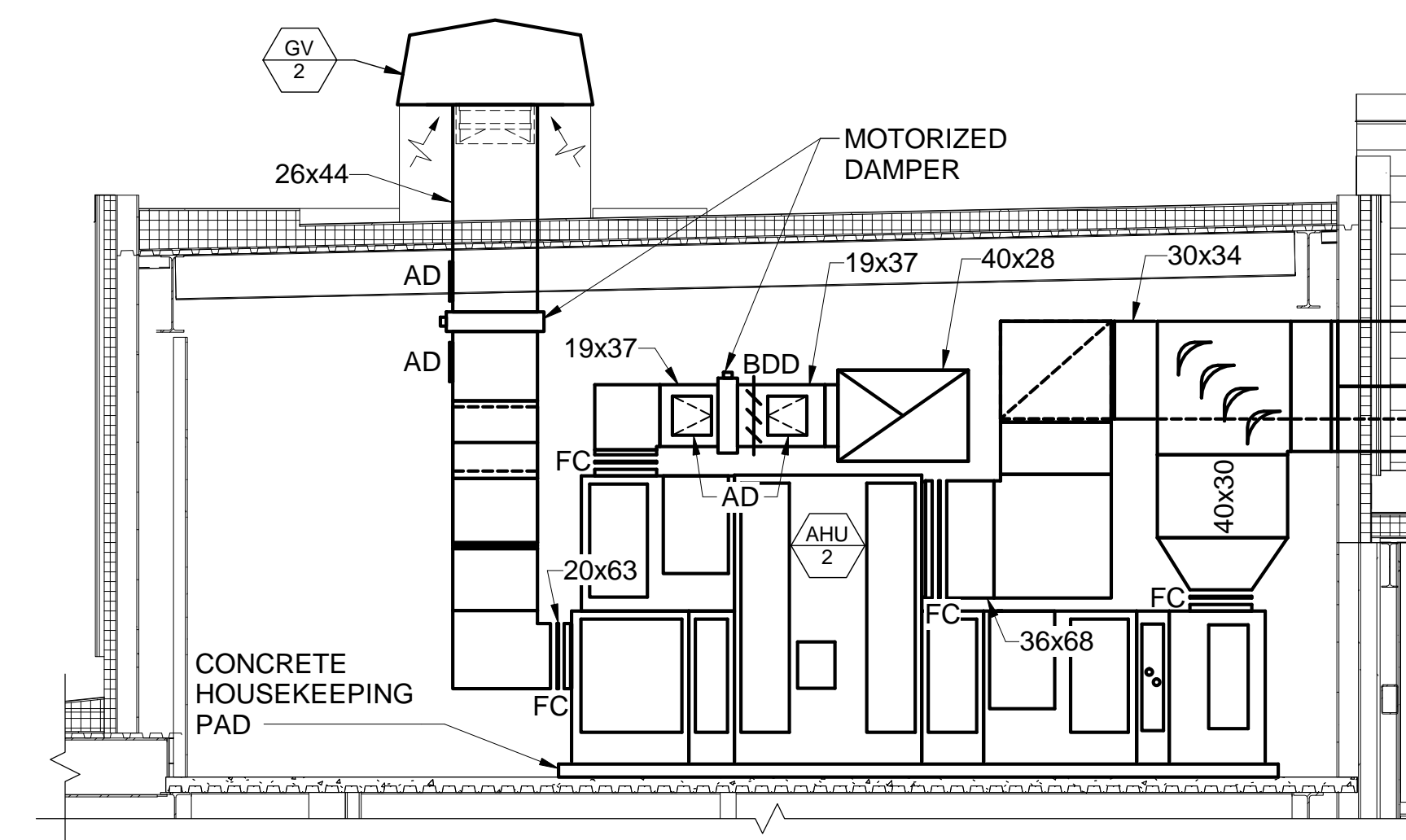
1 PROVIDE FLEXIBLE CONNECTOR TO ALLOW 5-INCHES OF MOVEMENT.



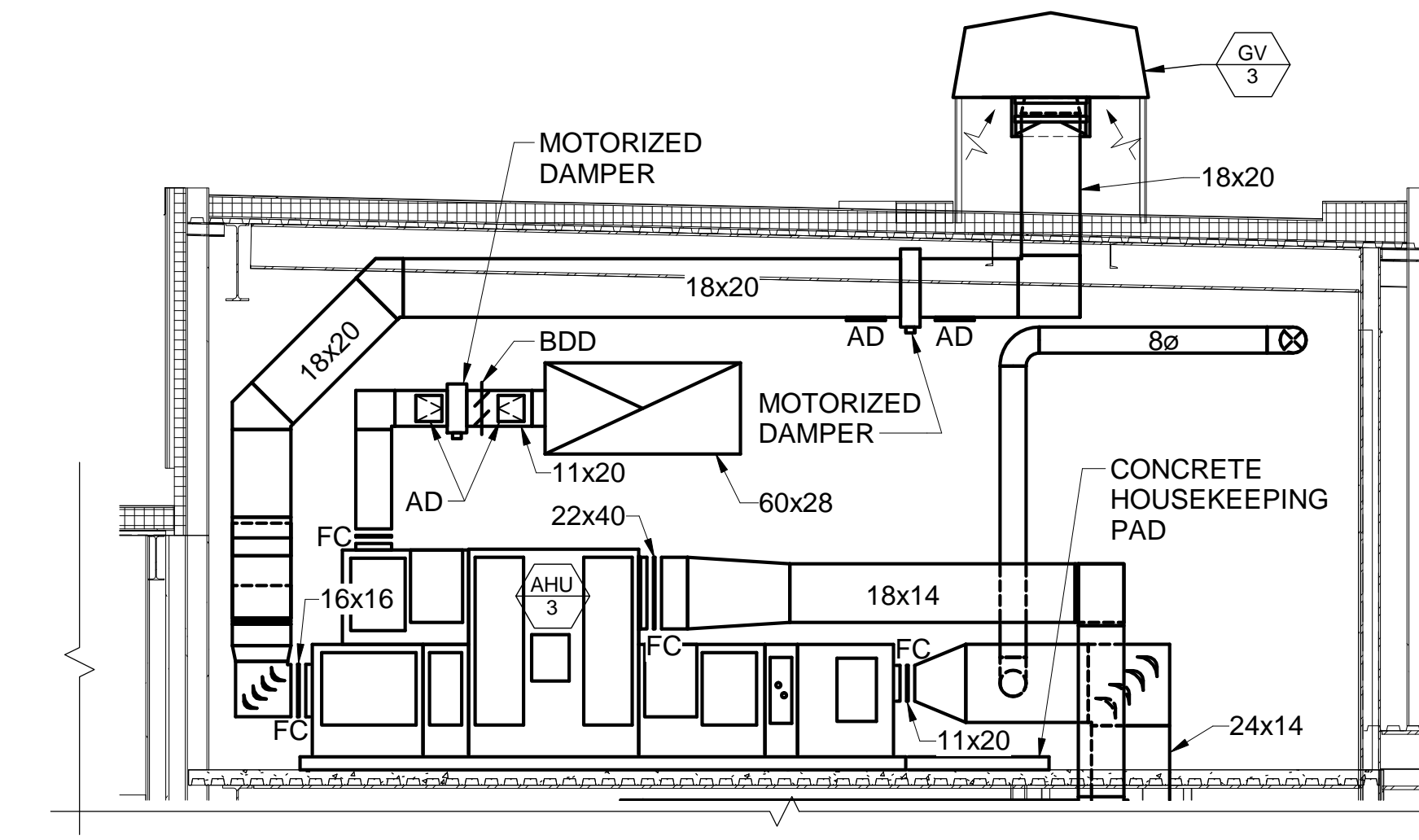
**1 SECOND FLOOR MECH ROOM D13 PART PLAN**  
M-402 SCALE: 1/4" = 1'-0"



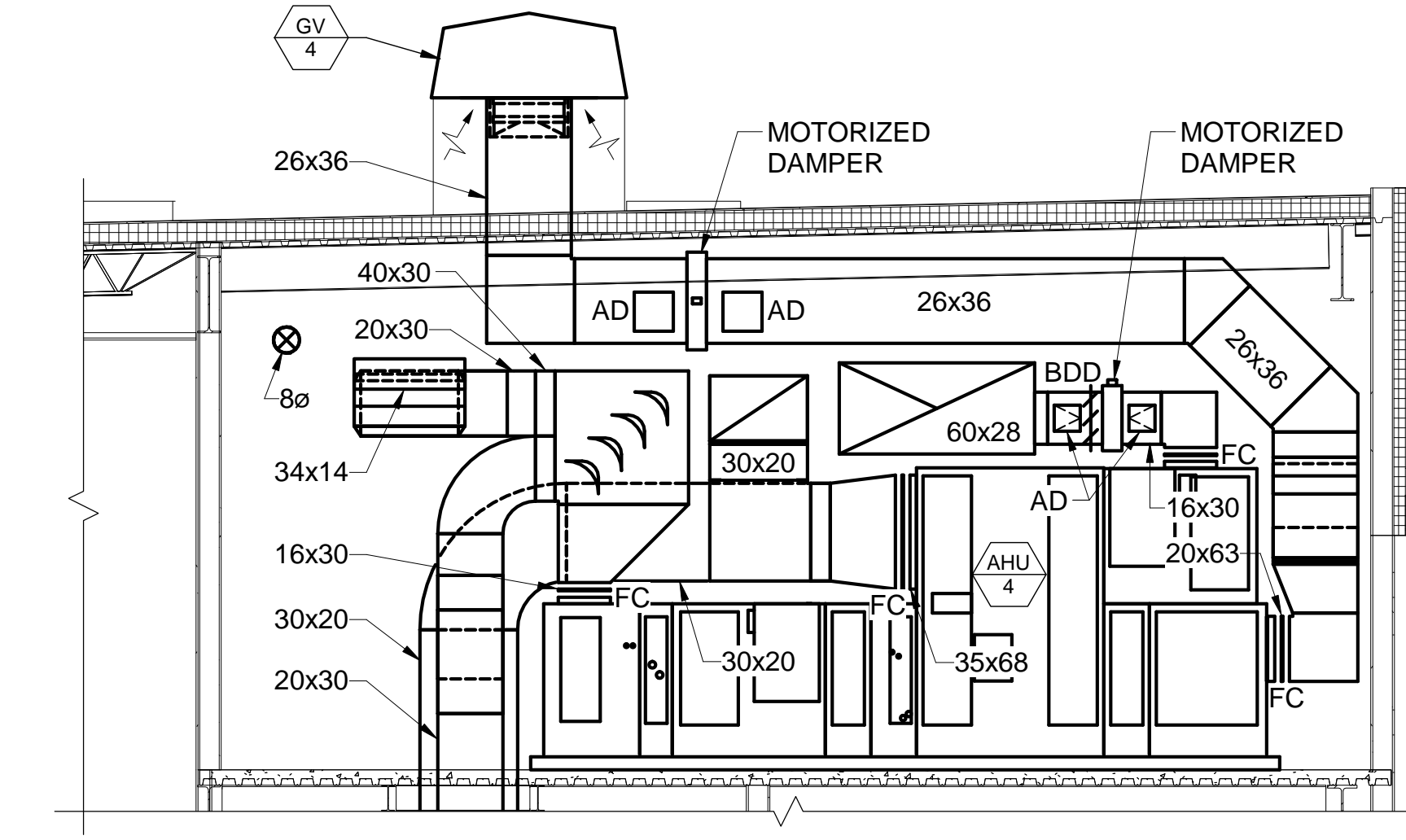
**2 AHU 3 SECTION**  
M-402 SCALE: 1/4" = 1'-0"



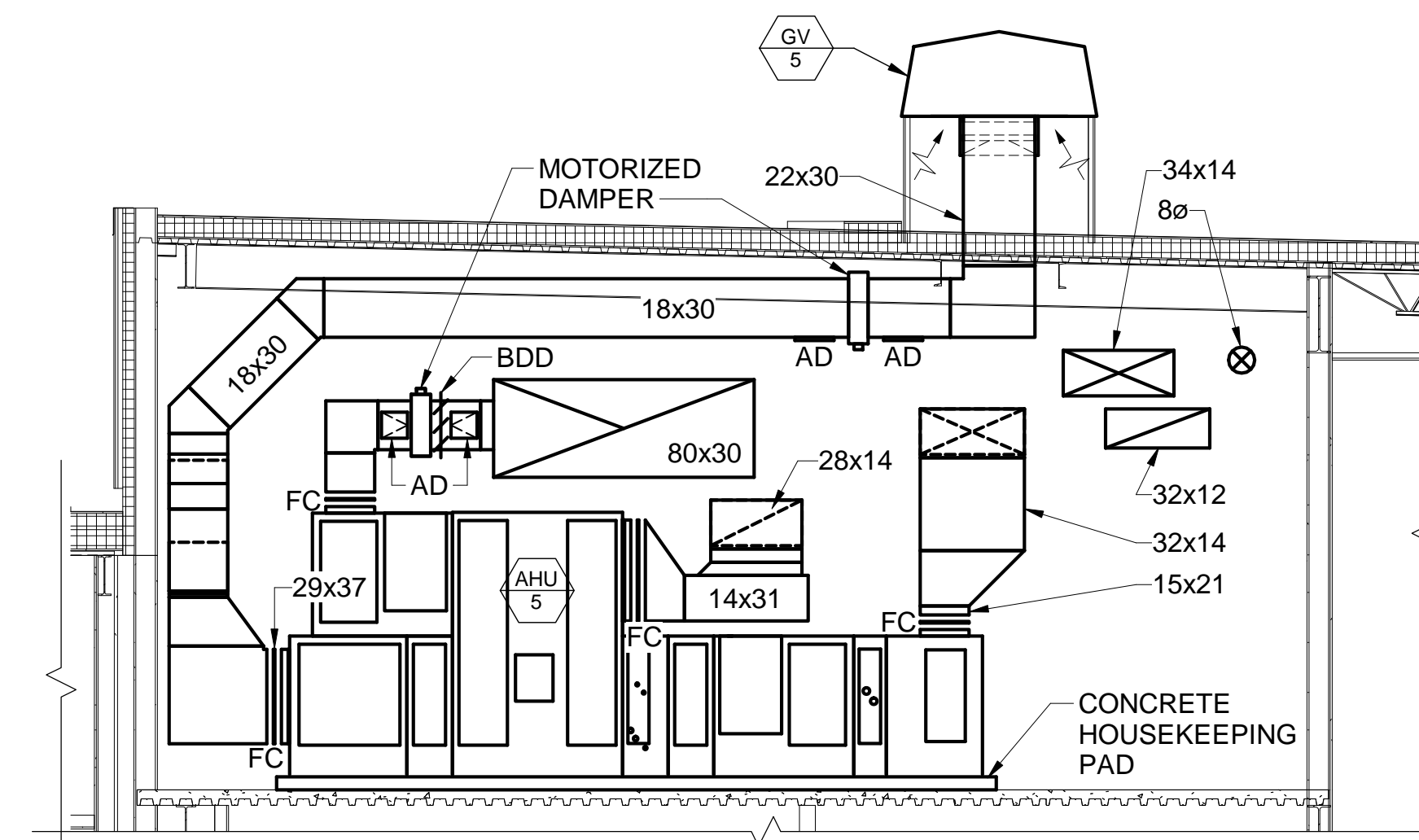
**3 AHU 4 SECTION**  
M-402 SCALE: 1/4" = 1'-0"



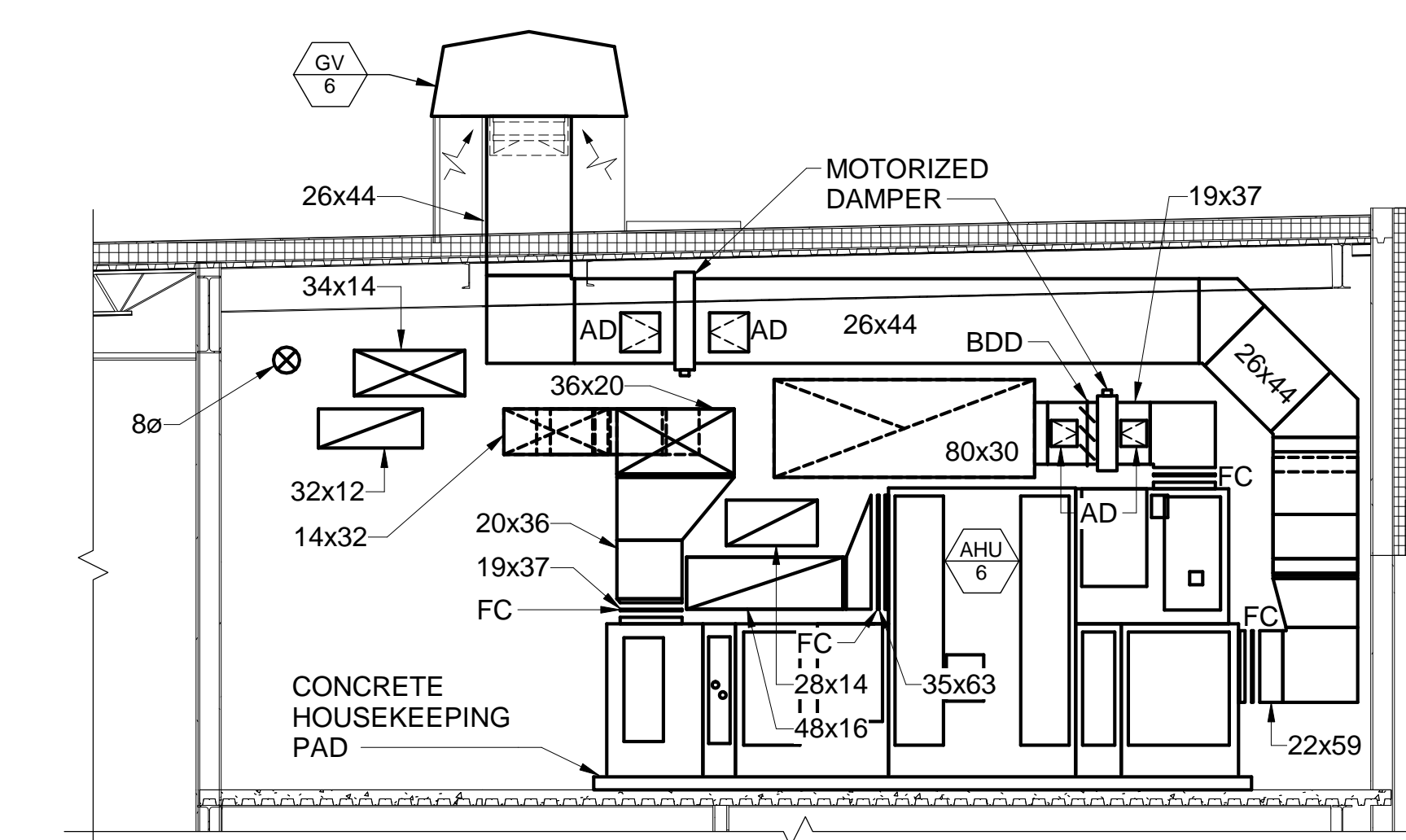
**4 AHU 1 SECTION**  
M-402 SCALE: 1/4" = 1'-0"



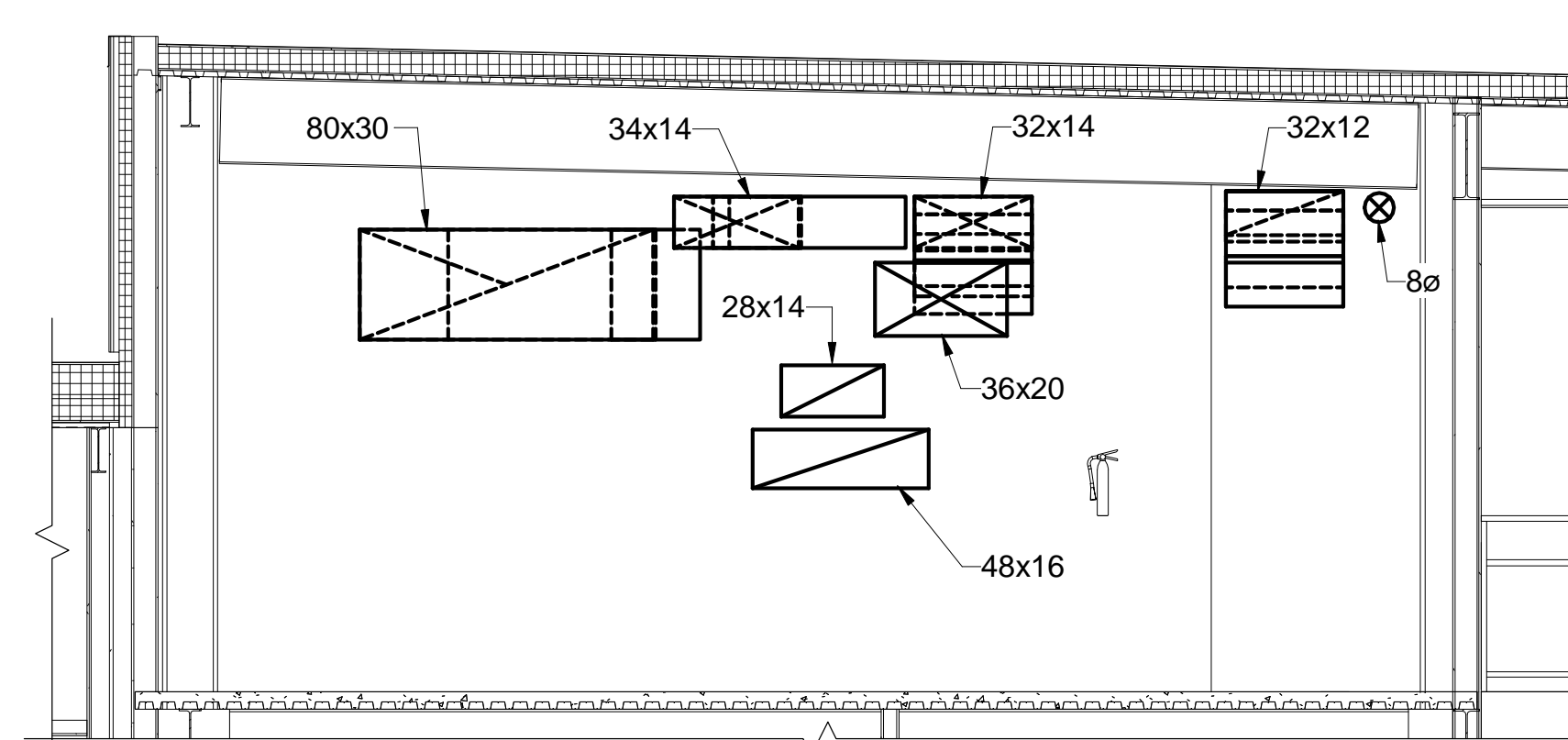
**5 AHU 2 SECTION**  
M-402 SCALE: 1/4" = 1'-0"



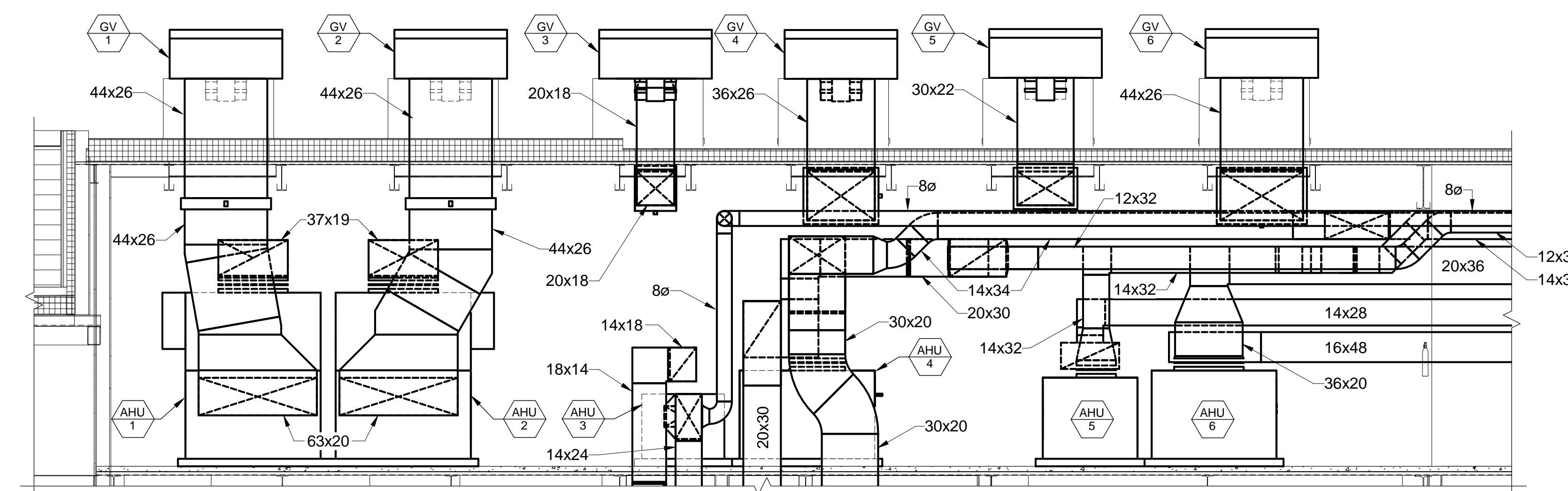
**6 AHU 6 SECTION**  
M-402 SCALE: 1/4" = 1'-0"



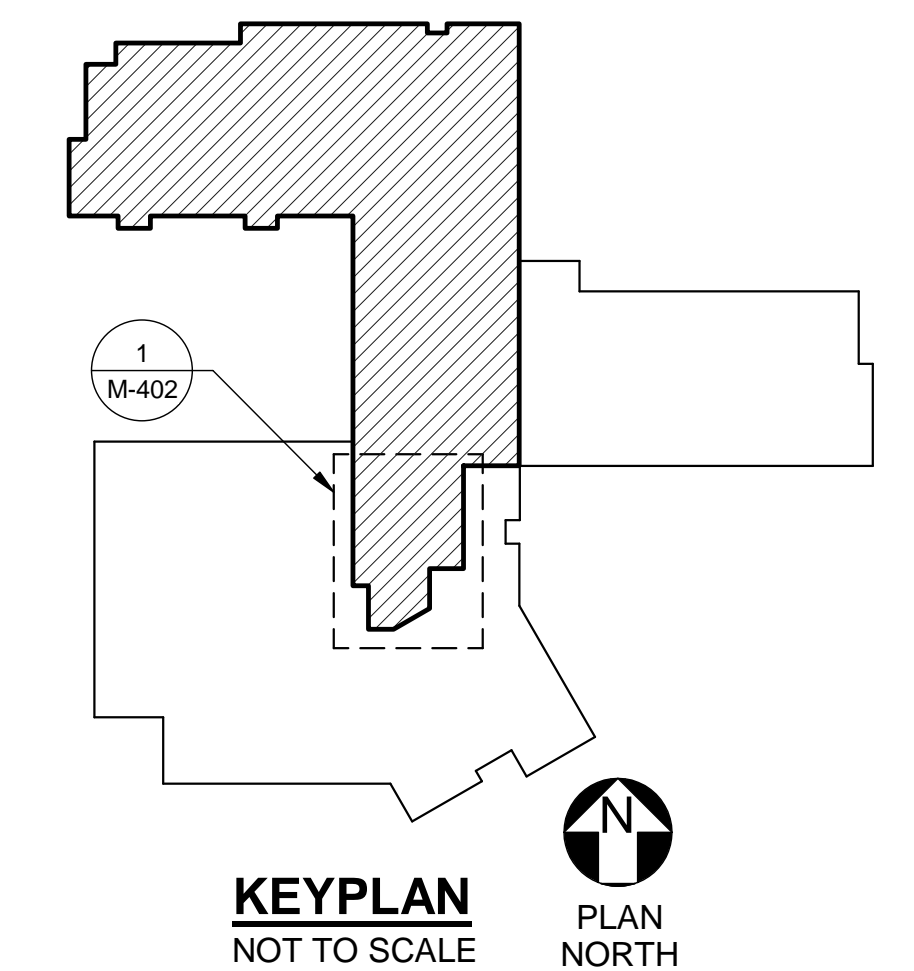
**7 AHU 5 SECTION**  
M-402 SCALE: 1/4" = 1'-0"



**8 MECH ROOM D13 DUCTWORK SECTION 1**  
M-402 SCALE: 1/4" = 1'-0"



**9 MECH ROOM D13 DUCTWORK SECTION 2**  
M-402 SCALE: 1/4" = 1'-0"



**KEYPLAN**  
NOT TO SCALE  
PLAN NORTH

<p>STATE OF MAINE PUBLIC SCHOOL PROJECT NEW FRED P. HALL ELEMENTARY SCHOOL LOCATION: 23 ORONO ROAD, PORTLAND, ME</p>		<p><b>OAK POINT ASSOCIATES</b> M-402</p>				
<p>MECHANICAL ROOM D13 ENLARGED PART PLANS</p>						
NO.	DATE	DESCRIPTION	BY	NO.	DATE	DESCRIPTION
		REVISIONS			03/17/17	