

EXTERIOR DOOR B12		
DOOR	WIDTH	CAPACITY
DOOR	66"	330
STAIR	NA	-
LIMIT		330
USE		247

EXTERIOR DOOR B19B		
DOOR	WIDTH	CAPACITY
DOOR	66"	330
STAIR	NA	-
LIMIT		330
USE		22

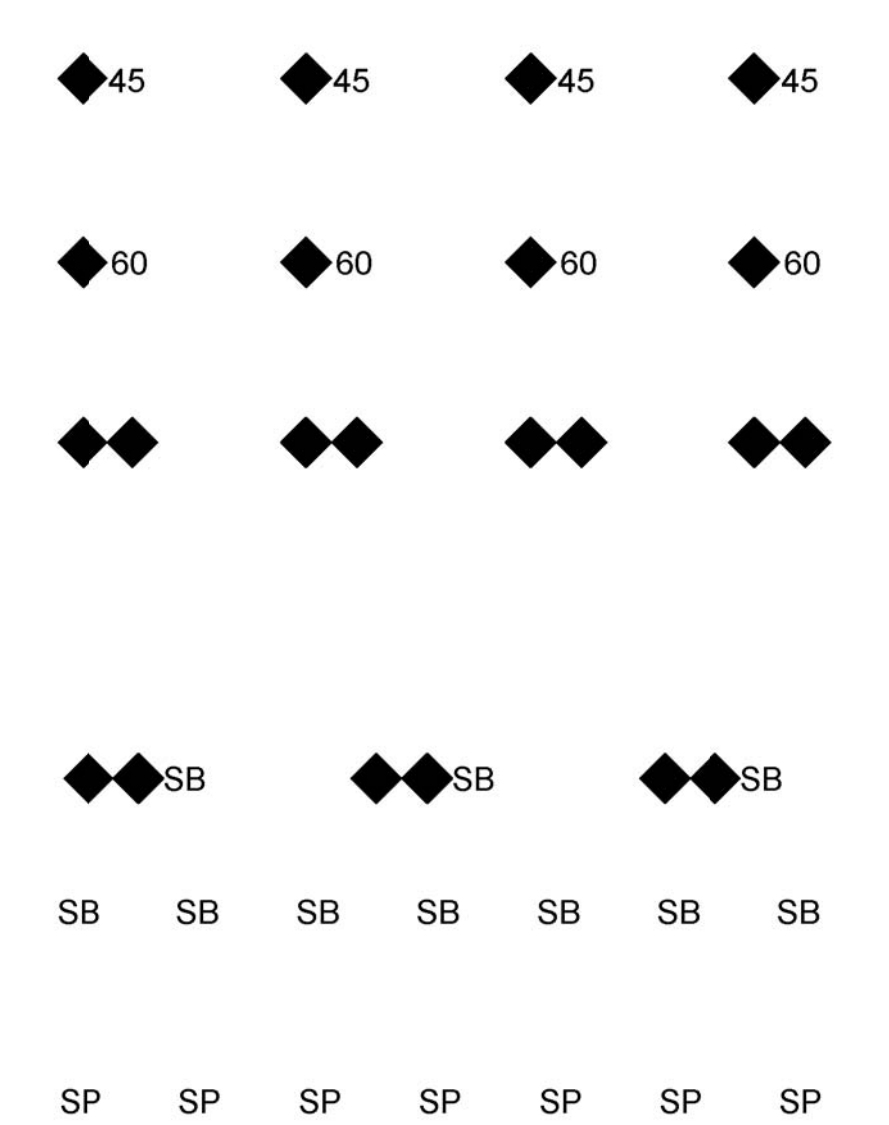
EXTERIOR DOOR B01		
DOOR	WIDTH	CAPACITY
DOOR	66"	330
STAIR	NA	-
LIMIT		330
USE		195

**1 EGRESS AND FIRE RATING FIRST FLOOR PART PLAN WING B**  
 G-103 SCALE: 1/8" = 1'-0"

**GENERAL SHEET NOTES:**

- SEE ARCHITECTURAL SHEETS FOR WALL TYPES AND FIRESTOPPING OF JOINTS AND PENETRATIONS.
- EXTEND WALL RATINGS TO UNDERSIDE OF FLOOR DECK OR ROOF DECK ABOVE UNLESS NOTED OTHERWISE. WHERE WALL INTERSECTS A PARALLEL STRUCTURAL BEAM, BEAM SHALL HAVE GYPSUM ENCLOSURE TO PROVIDE THE SAME FIRE RESISTANCE AS THE WALL.
- STAIR WALLS AND CEILINGS SHALL NOT BE PENETRATED FROM EITHER SIDE WITH THE EXCEPTION OF CONDUIT FOR LIGHTING OF THE STAIR, CONDUIT FOR FIRE ALARM APPLIANCES AND DEVICES, OR SPRINKLER PIPING.
- SHADED AREAS INDICATE A RATING IS REQUIRED ON THE FLOOR/CEILING ASSEMBLY ABOVE.

**FIRE RATING/FIRE RATING KEYNOTES**



**FIRE BARRIER WALL: 1-HOUR FIRE RESISTANCE RATING WITH 45-MINUTE OPENING PROTECTION AND 1-HOUR FIRESTOPPING AT PENETRATIONS AND JOINTS.**

**FIRE BARRIER WALL: 1-HOUR FIRE RESISTANCE RATING WITH 60-MINUTE OPENING PROTECTION AND 1-HOUR FIRESTOPPING AT PENETRATIONS AND JOINTS.**

**FIRE WALL: 2-HOUR FIRE WALL ACHIEVED BY A DOUBLE FIRE WALL, WITH EACH WALL HAVING A 1-HOUR FIRE RESISTANCE RATING WITH 60-MINUTE OPENING PROTECTION AND 1-HOUR FIRESTOPPING AT PENETRATIONS AND JOINTS. (2-HOUR RATING PER 2009 IBC TABLE 706.4, FOOTNOTE A. TWO 1-HOUR WALLS EQUIVALENT TO A 2-HOUR FIRE WALL PER 2015 NFPA 221, TABLE 4.5).**

**COMBINATION 2-HOUR FIRE WALL AND SMOKE BARRIER.**

**SMOKE BARRIER WALLS: SMOKE RESISTANT SEALANT AT PENETRATIONS AND JOINTS. SELF-CLOSING AND LATCHING DOORS WITH GASKETING. SMOKE DAMPERS AT DUCTWORK PENETRATIONS.**

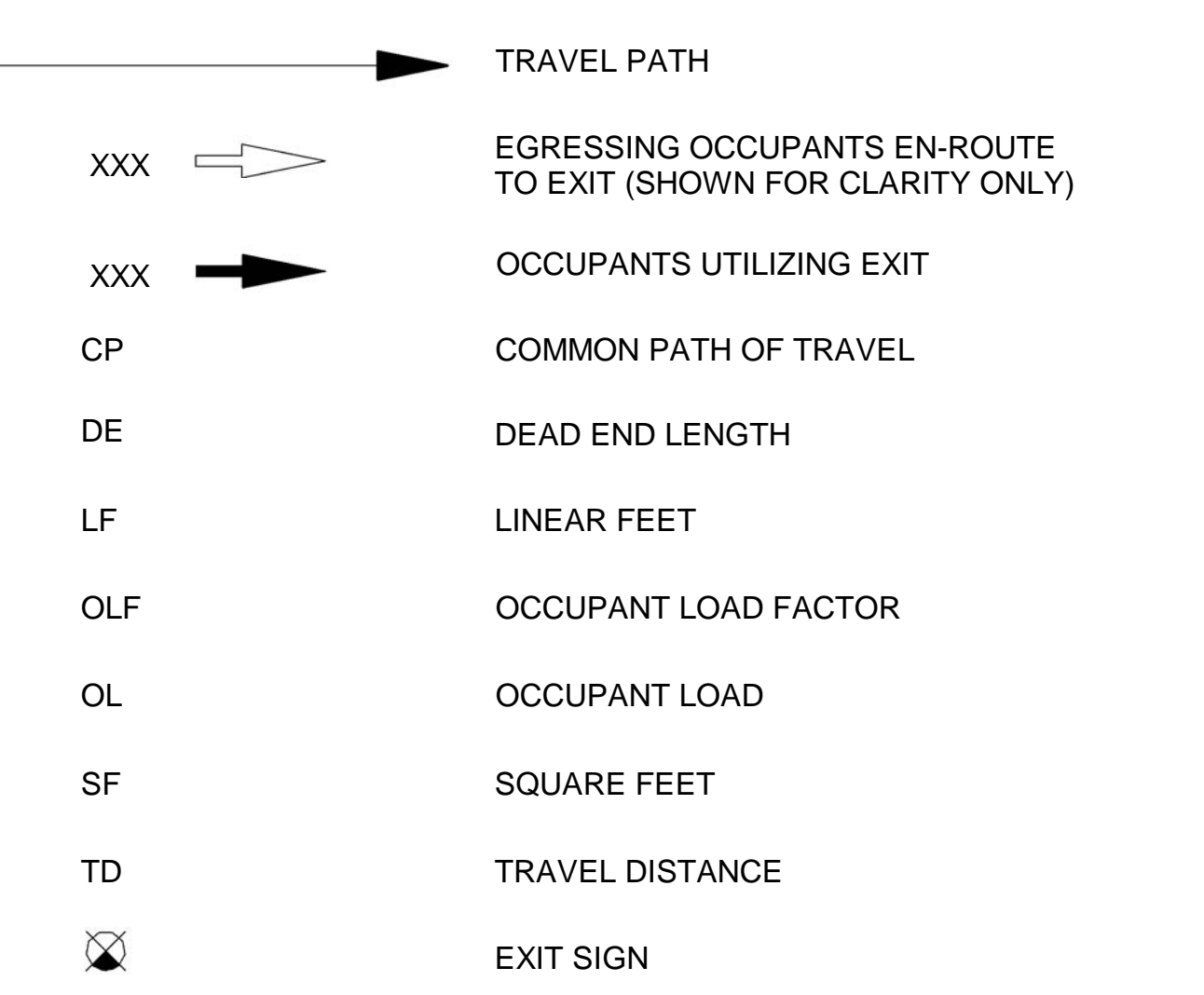
**SMOKE PARTITION WALLS: SMOKE RESISTANT SEALANT AT PENETRATIONS AND JOINTS AND SELF-CLOSING AND LATCHING DOORS.**

**FIRE WALL HORIZONTAL VESTIBULE: 1-HOUR FIRE RATED HORIZONTAL FLOOR/CEILING ASSEMBLY WITH 60-MINUTE OPENING PROTECTION AND 1-HOUR FIRESTOPPING AT PENETRATIONS AND JOINTS.**

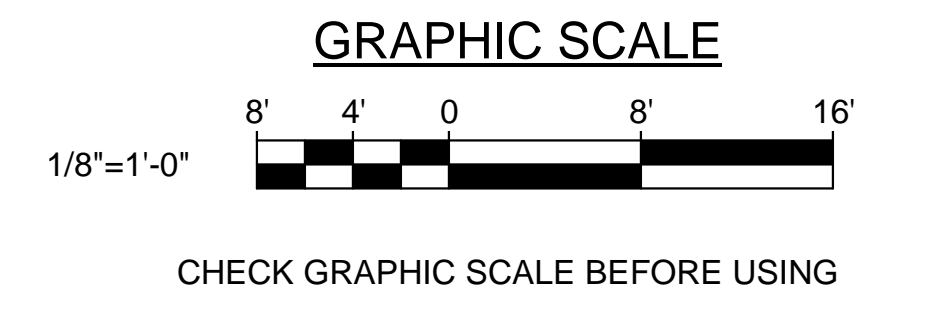
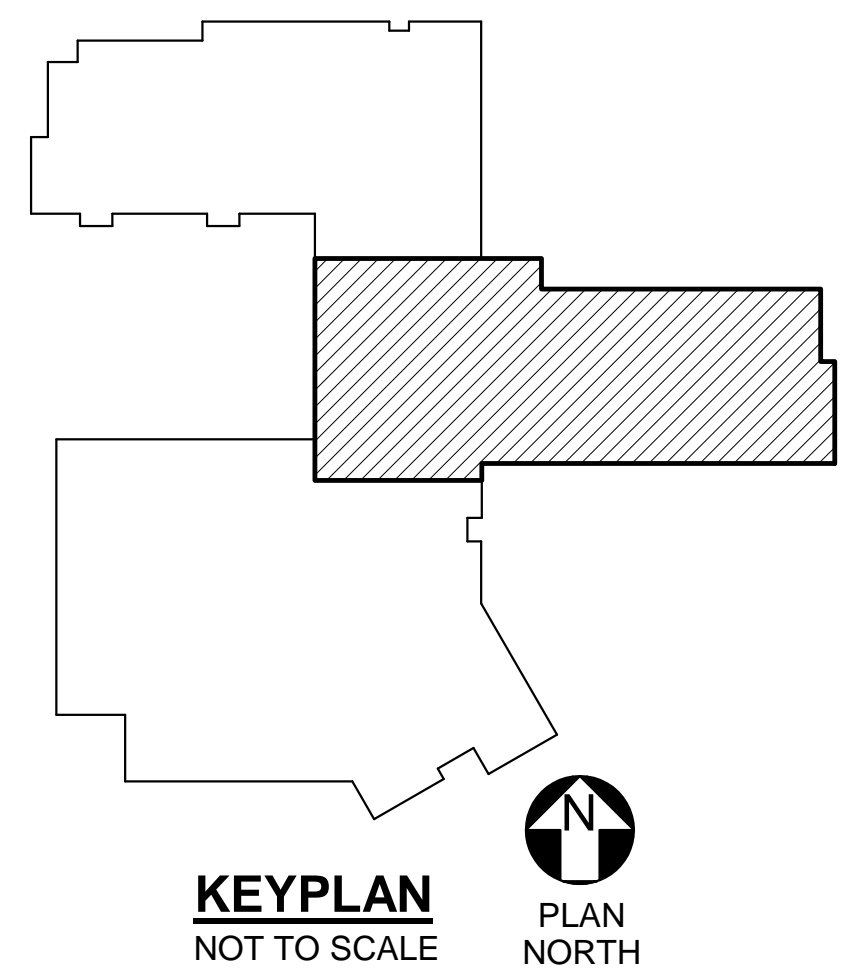
**FIRE BARRIER HORIZONTAL ASSEMBLY: 1-HOUR FIRE RATED HORIZONTAL FLOOR/CEILING ASSEMBLY WITH 60-MINUTE OPENING PROTECTION AND 1-HOUR FIRESTOPPING AT PENETRATIONS AND JOINTS.**

**FIRE BARRIER HORIZONTAL ASSEMBLY: 1-HOUR FIRE RATED HORIZONTAL FLOOR/CEILING ASSEMBLY WITH 45-MINUTE OPENING PROTECTION AND 1-HOUR FIRESTOPPING AT PENETRATIONS AND JOINTS.**

**FIRE RATING LEGEND**



VERTICAL OPENING SCHEDULE			
VERTICAL OPENING	2009 IBC OPENING CLASSIFICATION AND PROTECTION REQUIREMENTS	2015 IBC OPENING CLASSIFICATION AND PROTECTION REQUIREMENTS	2009 NFPA 101 OPENING CLASSIFICATION AND PROTECTION REQUIREMENTS
1-TWO STORY STAIR 2-TWO STORY STAIR	707.3.2 AND 1022.1 EXIT ENCLOSURES. 1-HOUR FIRE BARRIERS AT BOTH FLOOR LEVELS.	1023.2 INTERIOR EXIT STAIRWAY. 1-HOUR FIRE BARRIERS AT BOTH FLOOR LEVELS.	7.1.3.2.1 (1) EXIT STAIR. 1-HOUR FIRE BARRIERS AT BOTH FLOOR LEVELS.
3-TWO STORY ELEVATOR SHAFT	708.2, 708.4, AND 708.14 SHAFT ENCLOSURE. 1-HOUR FIRE BARRIERS AT BOTH FLOOR LEVELS.	712.1.1 AND 713 SHAFT ENCLOSURE. 1-HOUR FIRE BARRIERS AT BOTH FLOOR LEVELS.	8.6.4 AND 8.6.5 SHAFT ENCLOSURE. 1-HOUR FIRE BARRIERS AT BOTH FLOOR LEVELS.
4-OPEN TO LIBRARY BELOW 5-OPEN TO MUSIC ROOM BELOW	708.2 EXCEPTION 7 NO SHAFT ENCLOSURE REQUIRED FOR TWO-STORY SPACE THAT IS NOT MEANS OF EGRESS AND NOT CONCEALED.	712.1.9 TWO-STORY OPENING. NO PROTECTION REQUIRED.	8.6.6 COMMUNICATING SPACE. SEPARATED FROM BOTH FLOOR LEVELS BY SMOKE BARRIERS.
6-OPEN STAIR	708.2, EXCEPTION 11, 1016.1, EXCEPTIONS 3 AND 4, 1021.1 EXCEPTION, 1021.1 EXCEPTION 3, AND TABLE 1021.1 UNENCLOSED EXIT ACCESS STAIRWAY. PER TABLE 1021.1 THREE EXITS ARE REQUIRED FROM THE SECOND FLOOR. PER 1021.1 EXCEPTION 3, AN EXIT ACCESS STAIRWAY THAT MEETS 1018.1 EXCEPTION 3 OR 4 CAN BE USED AS ONE OF THESE EXITS. AS THE 250' TRAVEL DISTANCE IS MET, BOTH 1016.1 EXCEPTIONS 3 AND 4 ARE MET. THIS ALSO SATISFIES THE SHAFT ENCLOSURE REQUIREMENT OF 708.2, EXCEPTION 11.	712.1.2 AND 1019.3 EXCEPTION 1 TWO-STORY EXIT ACCESS STAIR NO PROTECTION REQUIRED.	8.6.8.1 CONVENIENCE OPENING. SEPARATED FROM 1-STORY BY 1-HOUR FIRE BARRIERS.
7-LOBBY	ALTERNATIVE COMPLIANCE BY MEETING 2015 IBC, AND 2009 AND 2015 NFPA 101.	712.1.9 TWO-STORY OPENING. NO PROTECTION REQUIRED.	8.6.8.1 CONVENIENCE OPENING. SEPARATED FROM 1-STORY BY 1-HOUR FIRE BARRIERS.



		<b>STATE OF MAINE PUBLIC SCHOOL PROJECT</b> TITLE: PORTLAND PUBLIC SCHOOLS NEW FRED P. HALL ELEMENTARY SCHOOL LOCATION: 23 ORONO ROAD, PORTLAND, ME	
DRAWN BY: SAS CHECK BY: LEC		<b>OAK POINT ASSOCIATES</b> G-103 SHEET NO.	
NO.	DATE	DESCRIPTION	BY
		REVISIONS	
	03/17/17		