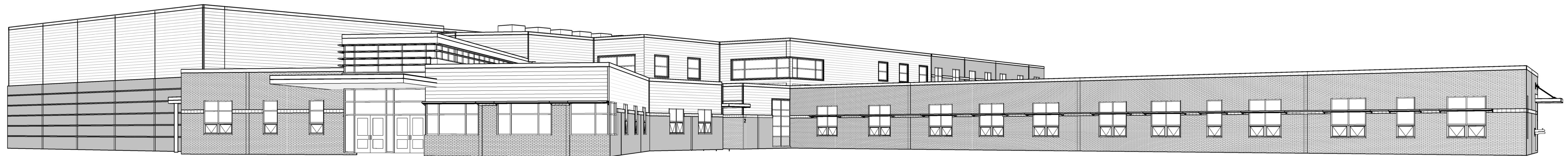


PORTLAND PUBLIC SCHOOLS NEW FRED P. HALL ELEMENTARY SCHOOL 23 ORONO ROAD, PORTLAND, ME



OAK POINT ASSOCIATES

ARCHITECTURE - ENGINEERING - PLANNING
231 MAIN STREET, BIDDEFORD, MAINE 04005

VOLUME 3

| | | | | | |
|-----|------|--------------------------------|----|--|----------|
| | | | | STATE OF MAINE PUBLIC SCHOOL PROJECT | |
| | | | | TITLE: PORTLAND PUBLIC SCHOOLS NEW FRED P. HALL ELEMENTARY SCHOOL LOCATION: 23 ORONO ROAD, PORTLAND, ME TITLE THIS DWG.: COVER SHEET | |
| | | DRAWN BY: JGB CHECK BY: TGB | | DRAWING NO. G001B SHEET NO. 216 OF 312 | |
| NO. | DATE | DESCRIPTION | BY | NO. | DATE |
| | | REVISIONS | | | 03/17/17 |