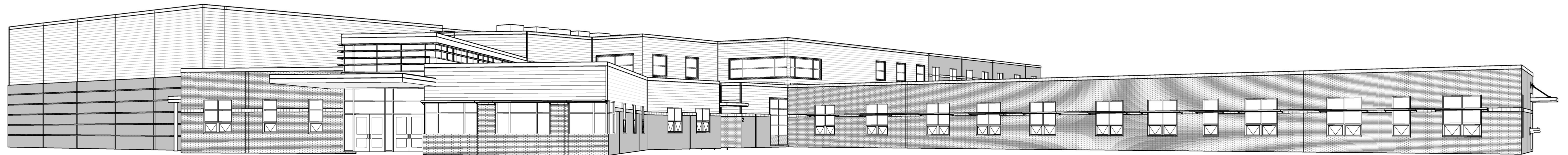


PORTLAND PUBLIC SCHOOLS NEW FRED P. HALL ELEMENTARY SCHOOL 23 ORONO ROAD, PORTLAND, ME



OAK POINT ASSOCIATES

ARCHITECTURE - ENGINEERING - PLANNING
231 MAIN STREET, BIDDEFORD, MAINE 04005

VOLUME 2

APPROVED FOR SUPERINTENDENT HALL SCHOOL DEPARTMENT	APPROVED FOR BUREAU OF GENERAL SERVICES	APPROVED FOR DEPT. OF HEALTH AND HUMAN SERVICES				
BY: _____ DATE: _____	BY: _____ DATE: _____	BY: _____ DATE: _____				
APPROVED FOR DEPT. OF EDUCATION	APPROVED FOR DEPT. OF PUBLIC SAFETY	APPROVED FOR PLUMBERS EXAMINING BOARD				
BY: _____ DATE: _____	BY: _____ DATE: _____	BY: _____ DATE: _____				
		STATE OF MAINE PUBLIC SCHOOL PROJECT TITLE: PORTLAND PUBLIC SCHOOLS NEW FRED P. HALL ELEMENTARY SCHOOL LOCATION: 23 ORONO ROAD, PORTLAND, ME TITLE THIS DWG.: COVER SHEET				
DRAWN BY: JGB CHECK BY: TGB		OAK POINT ASSOCIATES DRAWING NO. G001A SHEET NO. 123 OF 312				
NO.	DATE	DESCRIPTION	BY	NO.	DATE	DESCRIPTION
		REVISIONS			03/17/17	