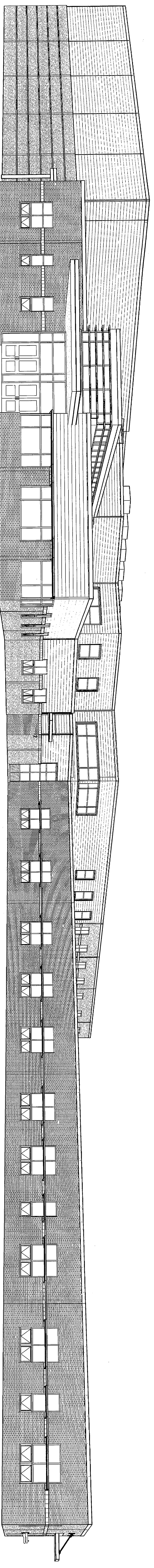


# PORTLAND PUBLIC SCHOOLS

## NEW FRED P. HALL ELEMENTARY SCHOOL

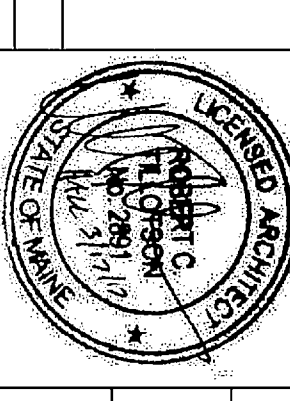
### 23 ORONO ROAD, PORTLAND, ME



## OAK POINT ASSOCIATES

ARCHITECTURE - ENGINEERING - PLANNING  
 231 MAIN STREET, BIDDEFORD, MAINE 04005

# VOLUME 1

APPROVED FOR: <b>REEDY CITY MANAGER - CITY OF PORTLAND</b> APPROVED FOR: <i>Chad Reed</i> TITLE: <b>DEPT. OF EDUCATION</b> DATE: <i>3/20/12</i>	APPROVED FOR: <b>DEPT. OF HEALTH AND HUMAN SERVICES - CITY OF PORTLAND</b> APPROVED FOR: _____ TITLE: _____ DATE: _____
DATE: <i>3/20/12</i> DRAWN BY: <b>CEJ</b> CHECK BY: <b>TGB</b> DATE: <i>03/17/12</i>	DATE: <i>3/20/12</i> DRAWN BY: <b>CEJ</b> CHECK BY: <b>TGB</b> DATE: <i>03/17/12</i>
	
<b>STATE OF MAINE</b> <b>PUBLIC SCHOOL PROJECT</b> TITLE: <b>PORTLAND PUBLIC SCHOOLS</b> LOCATION: <b>23 ORONO ROAD, PORTLAND, ME</b> COVER SHEET	
<b>OAK POINT ASSOCIATES</b> ARCHITECTURE - ENGINEERING - PLANNING 231 MAIN STREET, BIDDEFORD, MAINE 04005	
PROJECT NO. <b>G-001</b> SHEET NO. <b>1</b> OF <b>312</b>	