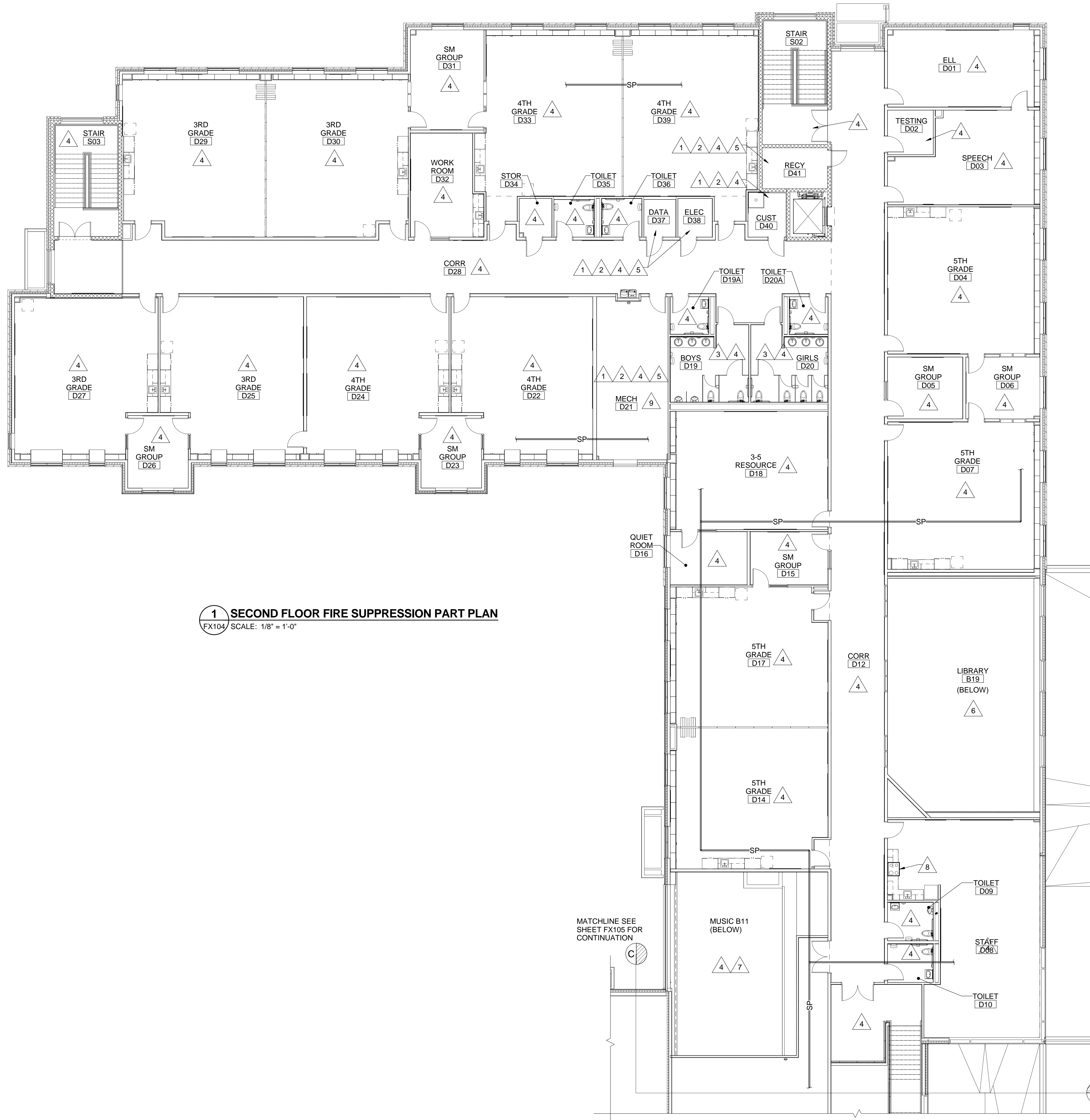


DRAWING NOTES

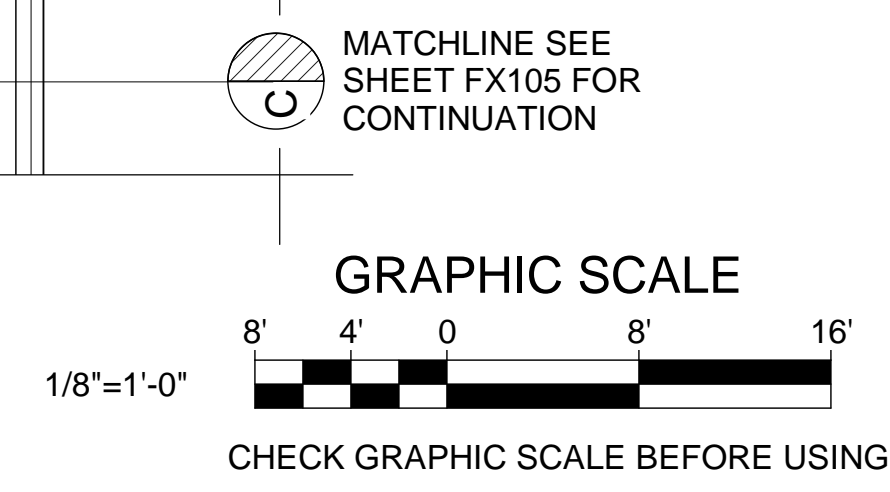
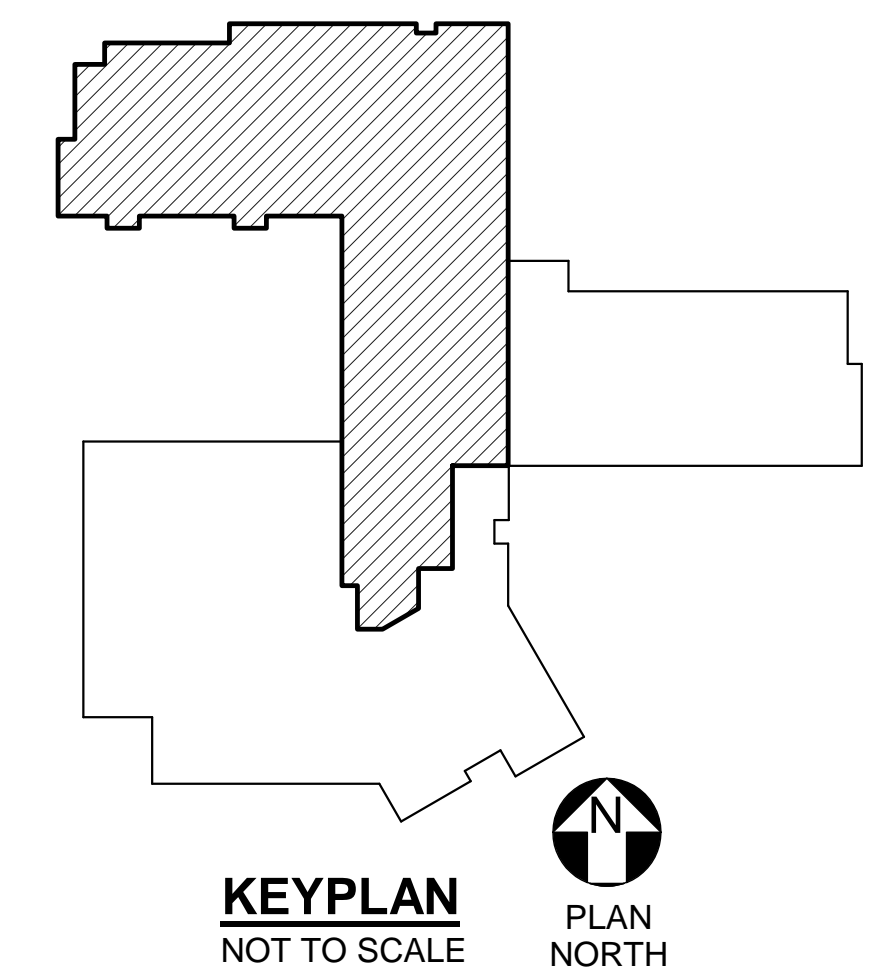
- REFER TO FIRE SUPPRESSION GENERAL NOTES ON FX001 FOR SYSTEM REQUIREMENTS.
- PROVIDE LIGHT HAZARD SPRINKLER COVERAGE THROUGHOUT UNLESS OTHERWISE NOTED.
- PROVIDE QUICK RESPONSE HEADS WHERE PERMITTED BY NFPA.
- REFER TO ARCHITECTURAL REFLECTED CEILING PLANS ON SHEETS AE701 TO AE704 FOR CEILING MATERIALS AND SOFFIT LOCATIONS FOR COORDINATION WITH SPRINKLER TYPES AND POSSIBLE CEILING OBSTRUCTIONS. TEACHING SPACES TYPICALLY HAVE SLOPED CEILINGS WITH HIGH POINT LOCATED AT THE EXTERIOR WALL(S). SEE SHEETS AE220 TO AE222 FOR BUILDING SECTIONS.
- SLOPED CEILINGS WITH SIDEWALL SPRINKLERS SHALL HAVE A SLOPE NOT EXCEEDING 2 IN 12.

DRAWING KEYNOTES

- PROVIDE ORDINARY HAZARD, GROUP 1 SPRINKLER COVERAGE IN ROOM INDICATED.
- PROVIDE SPRINKLER(S) WITH WIRE GUARD(S) IN ROOMS INDICATED.
- GYPSUM BOARD CEILING.
- PROVIDE QUICK RESPONSE SPRINKLER HEAD(S) IN THIS SPACE.
- EXPOSED STRUCTURE.
- LIBRARY SHALL BE IN FIRST FLOOR B&C WING ZONE.
- MUSIC ROOM SHALL BE IN SECOND FLOOR ZONE.
- NFPA 96 COMMERCIAL KITCHEN HOOD WITH INTEGRAL WET CHEMICAL FIRE SUPPRESSION SYSTEM. REFER TO DETAIL 15/M-502.
- PROVIDE SPRINKLER HEADS BELOW DUCTWORK IN COMPLIANCE WITH NFPA 13. MAINTAIN MINIMUM HEADROOM OF 7'-0" CLEAR AFF BELOW PIPING AND HEADS.



1 SECOND FLOOR FIRE SUPPRESSION PART PLAN
FX104/ SCALE: 1/8" = 1'-0"



		STATE OF MAINE PUBLIC SCHOOL PROJECT TITLE: PORTLAND PUBLIC SCHOOLS NEW FRED P. HALL ELEMENTARY SCHOOL LOCATION: 23 ORONO ROAD, PORTLAND, ME TITLE THIS DWG: SECOND FLOOR FIRE SUPPRESSION PLAN	
DRAWN BY: RDA CHECK BY: MSA	DATE: 03/17/17	OAK POINT ASSOCIATES 231 Main Street, Biddeford, Maine 04005 207.283.9192	DRAWING NO: FX104 SHEET NO: 280 OF 312
NO. DATE	DESCRIPTION	BY	NO.
	REVISIONS		