

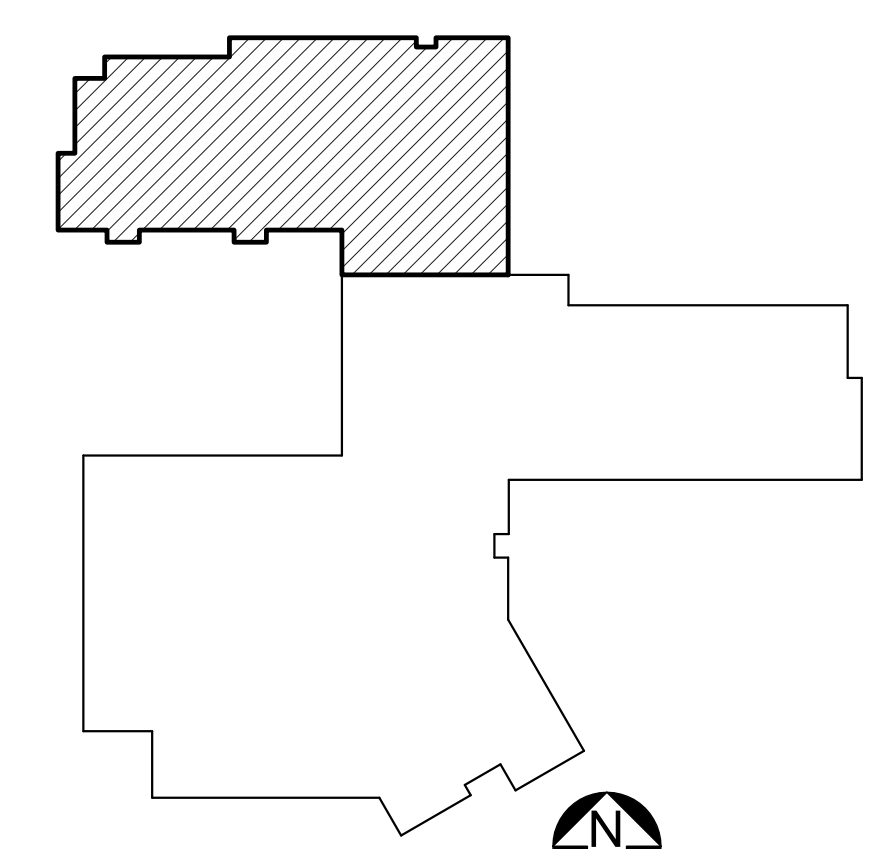
DRAWING NOTES

1. REFER TO FIRE SUPPRESSION GENERAL NOTES ON FX001 FOR SYSTEM REQUIREMENTS.
2. PROVIDE LIGHT HAZARD SPRINKLER COVERAGE THROUGHOUT UNLESS OTHERWISE NOTED.
3. PROVIDE QUICK RESPONSE HEADS WHERE PERMITTED BY NFPA.
4. REFER TO ARCHITECTURAL REFLECTED CEILING PLANS ON SHEETS AE701 TO AE704 FOR CEILING MATERIALS AND SOFFIT LOCATIONS FOR COORDINATION WITH SPRINKLER TYPES AND POSSIBLE CEILING OBSTRUCTIONS. TEACHING SPACES TYPICALLY HAVE SLOPED CEILINGS WITH HIGH POINT LOCATED AT THE EXTERIOR WALL(S). SEE SHEETS AE220 TO AE222 FOR BUILDING SECTIONS.
5. SLOPED CEILINGS WITH SIDEWALL SPRINKLERS SHALL HAVE A SLOPE NOT EXCEEDING 2 IN 12.

DRAWING KEYNOTES

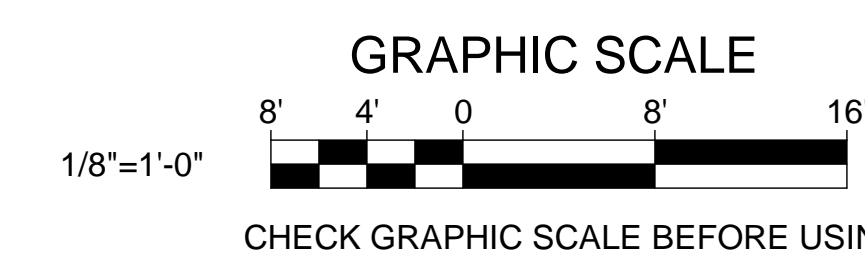
- 1 PROVIDE ORDINARY HAZARD, GROUP 1 SPRINKLER COVERAGE IN ROOM INDICATED.
- 2 PROVIDE SPRINKLER(S) WITH WIRE GUARD(S) IN ROOMS INDICATED
- 3 PROVIDE DRY TYPE PENDENT SPRINKLER(S) IN ROOM INDICATED.
- 4 PROVIDE QUICK RESPONSE SPRINKLER HEAD(S) IN THIS AREA.
- 5 EXPOSED STRUCTURE.
- 6 GYPSUM BOARD CEILING.
- 7 PROVIDE SPRINKLER IN ELEVATOR SHAFT PIT AND ELEVATOR MACHINE ROOM IN ACCORDANCE WITH ASME A17.1-2013. INSTALL SHAFT HEAD 24" OR LESS AFF OF PIT BOTTOM. PROVIDE FLOW AND TAMPER SWITCH WITH TEST DRAIN.
- 8 NFPA 96 COMMERCIAL KITCHEN HOOD WITH INTEGRAL WET CHEMICAL FIRE SUPPRESSION SYSTEM. REFER TO DETAIL 15/M-502.
- 9 PROVIDE CONCEALED SPRINKLER HEAD.
- 10 PROVIDE DRY TYPE SIDEWALL SPRINKLER HEAD TO COVER CANOPY AREA. SPRINKLER HEAD AND ESCUTCHEON SHALL BE CHROME FINISH.
- 11 PROVIDE SPRINKLER HEADS BELOW DUCTWORK IN COMPLIANCE WITH NFPA 13. MAINTAIN MINIMUM HEADROOM OF 7'-0" CLEAR AFF BELOW PIPING AND HEADS.

1 FIRST FLOOR FIRE PROTECTION PART PLAN C
 FX103 SCALE: 1/8" = 1'-0"



KEYPLAN
 NOT TO SCALE

PLAN NORTH



		STATE OF MAINE PUBLIC SCHOOL PROJECT	
		TITLE: PORTLAND PUBLIC SCHOOLS NEW FRED P. HALL ELEMENTARY SCHOOL LOCATION: 23 ORONO ROAD, PORTLAND, ME TITLE THIS DWG: FIRST FLOOR FIRE SUPPRESSION PART PLAN C	
DRAWN BY: RDA CHECK BY: MSA	BY: NO. DATE: 03/17/17	OAK POINT ASSOCIATES	FX103 SHEET NO.
NO. DATE DESCRIPTION REVISIONS		279 OF 312	