

**DRAWING NOTES**

1. REMOVE EXISTING SPRINKLER HEADS AND ASSOCIATED FIRE SUPPRESSION PIPING DURING PHASES 1 AND 3 AS INDICATED.
2. PIPING AND FIRE SUPPRESSION SYSTEMS THAT ARE TO BE REMOVED DURING PHASE 3 SHALL REMAIN FULLY OPERATIONAL DURING PHASES 1 AND 2.

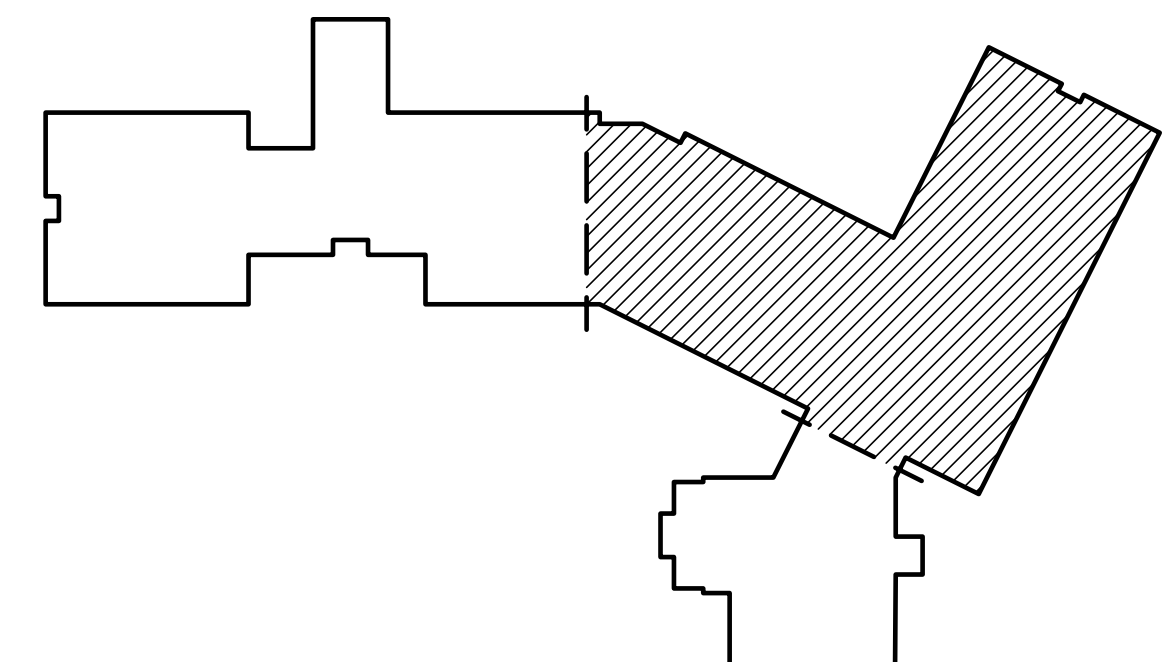
**DRAWING KEYNOTE**

△ CUT AND CAP EXISTING SPRINKLER PIPE.



SCOPE OF WORK  
PHASE 1 REMOVALS

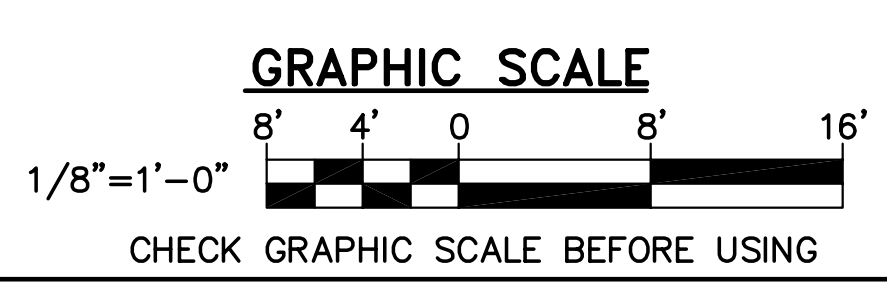
SCOPE OF WORK  
PHASE 3 REMOVALS



**KEY PLAN:** PLAN NORTH

**1 FIRE SUPPRESSION REMOVALS PART PLAN**

FD102 SCALE: 1/8"=1'-0"



|  |                       |  |   |
|--|-----------------------|--|---|
|  |                       | <p><b>STATE OF MAINE</b><br/><b>PUBLIC SCHOOL PROJECT</b></p> <p>TITLE: PORTLAND PUBLIC SCHOOLS<br/>NEW FRED P. HALL ELEMENTARY SCHOOL<br/>LOCATION: 23 GRAND ROAD, PORTLAND, ME</p> <p>TITLE THIS DWG:<br/><b>FIRE SUPPRESSION REMOVALS<br/>PART PLAN</b></p> |   |
| <p>DRAWN BY: KLG<br/>CHECKED BY: MSA</p> | <p>DATE: 03/17/17</p> | <p>DRAWING NO. <b>FD102</b></p> <p>SHEET NO. <b>275</b> OF <b>312</b></p>  | <p><b>OAK POINT ASSOCIATES</b></p> <p>231 Main Street, Biddeford, Maine 04005</p> |