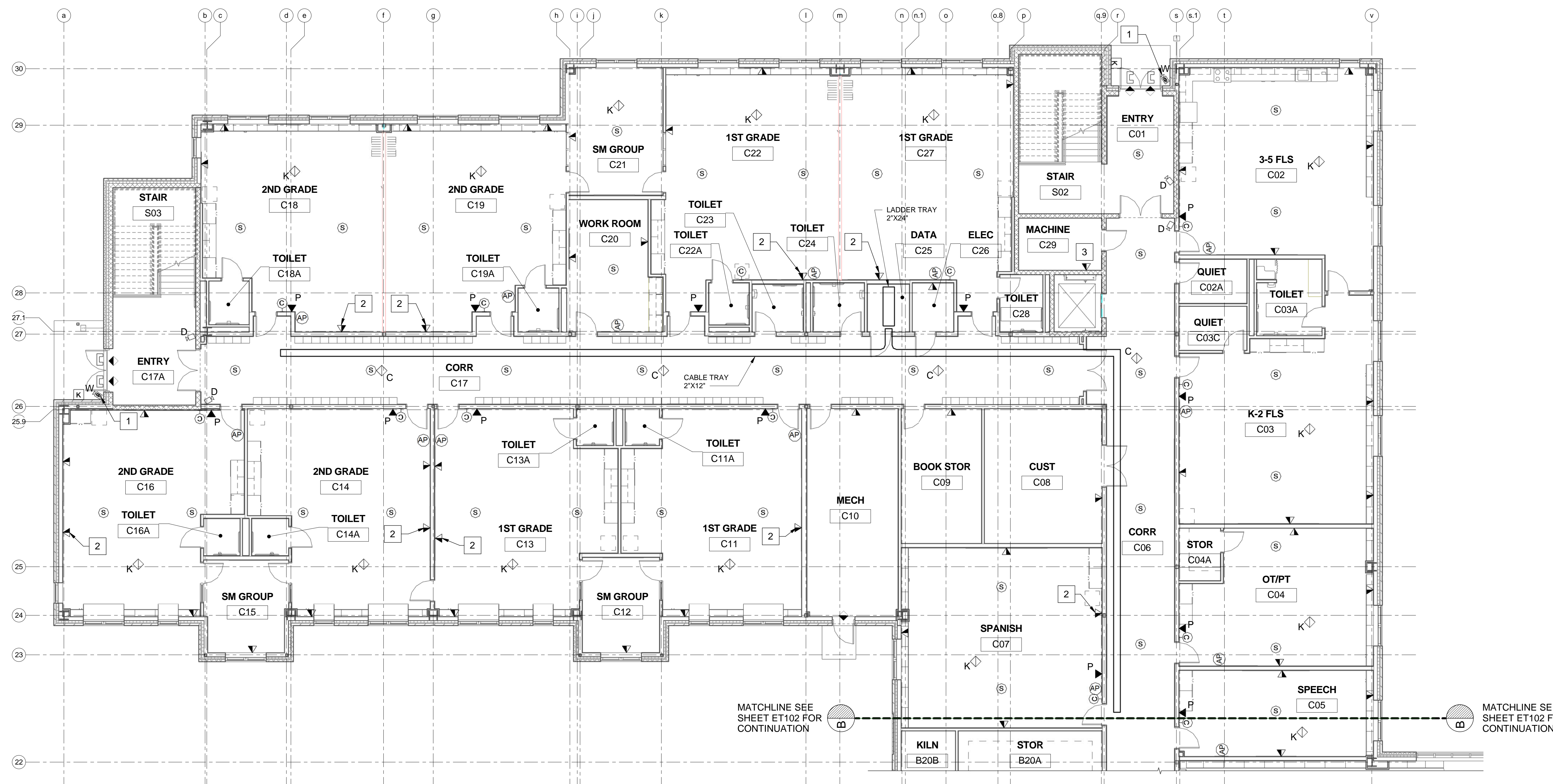


DRAWING NOTE

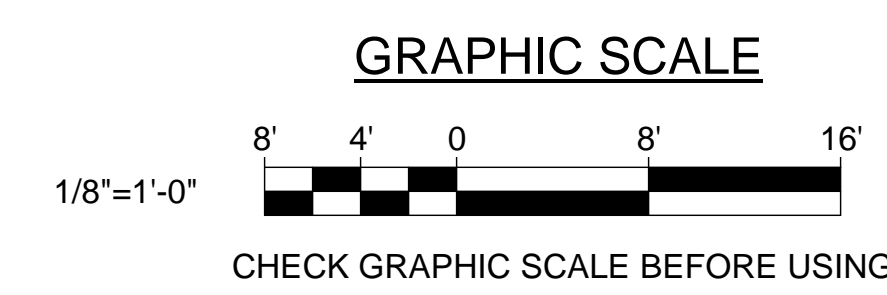
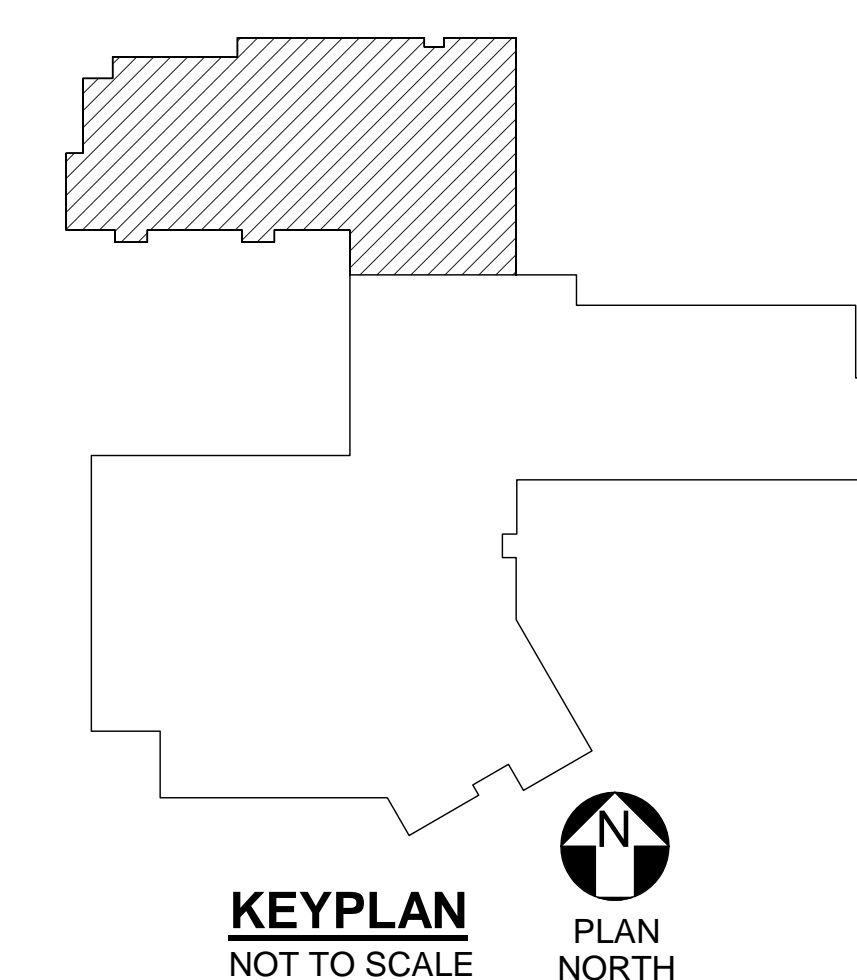
1. PROVIDE AND SIZE COMMUNICATIONS PATHWAYS FOR QUANTITY OF CABLES. COORDINATE PATHWAY ROUTES WITH ARCHITECTURAL, STRUCTURAL, AND MECHANICAL TRADES.

DRAWING KEYNOTES

- 1 MOUNT UNDER CANOPY.
- 2 LOCATE CENTERED ABOVE SMARTBOARD.
- 3 LOCATE ADJACENT TO ELEVATOR MACHINE. COORDINATE LOCATION WITH ELEVATOR INSTALLER.



1 FIRST FLOOR TECHNOLOGY PART PLAN C
 ET103 SCALE: 1/8" = 1'-0"



		STATE OF MAINE PUBLIC SCHOOL PROJECT TITLE: PORTLAND PUBLIC SCHOOLS NEW FRED P. HALL ELEMENTARY SCHOOL LOCATION: 23 ORONO ROAD, PORTLAND, ME TITLE THIS DWG: FIRST FLOOR TECHNOLOGY PART PLAN C	
DRAWN BY: BPD CHECK BY: DCL	NO. DATE DESCRIPTION REVISIONS	BY NO. DATE 03/17/17	DRAWING NO. ET103 SHEET NO. 304 OF 312