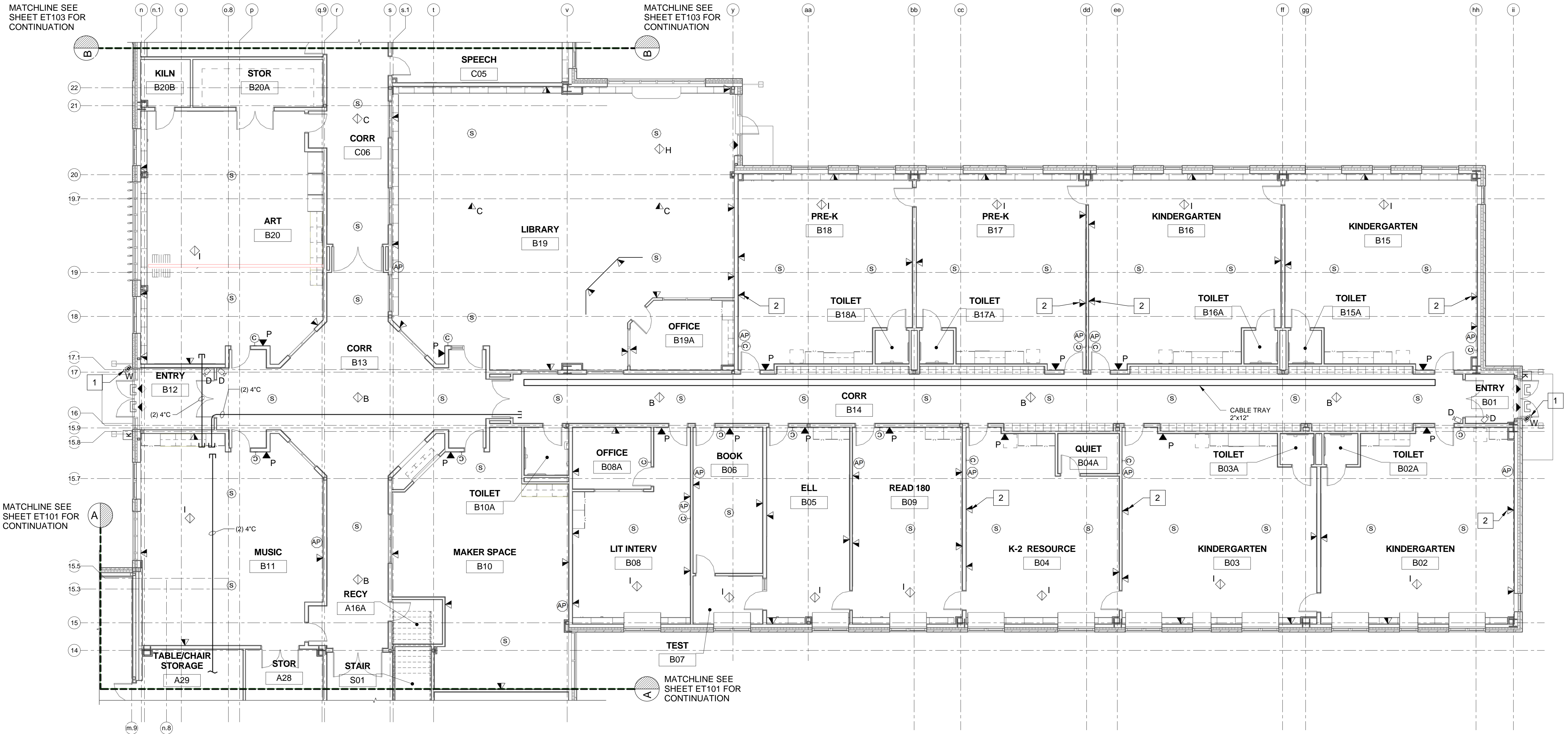


MATCHLINE SEE SHEET ET103 FOR CONTINUATION

MATCHLINE SEE SHEET ET103 FOR CONTINUATION



MATCHLINE SEE SHEET ET101 FOR CONTINUATION

MATCHLINE SEE SHEET ET101 FOR CONTINUATION

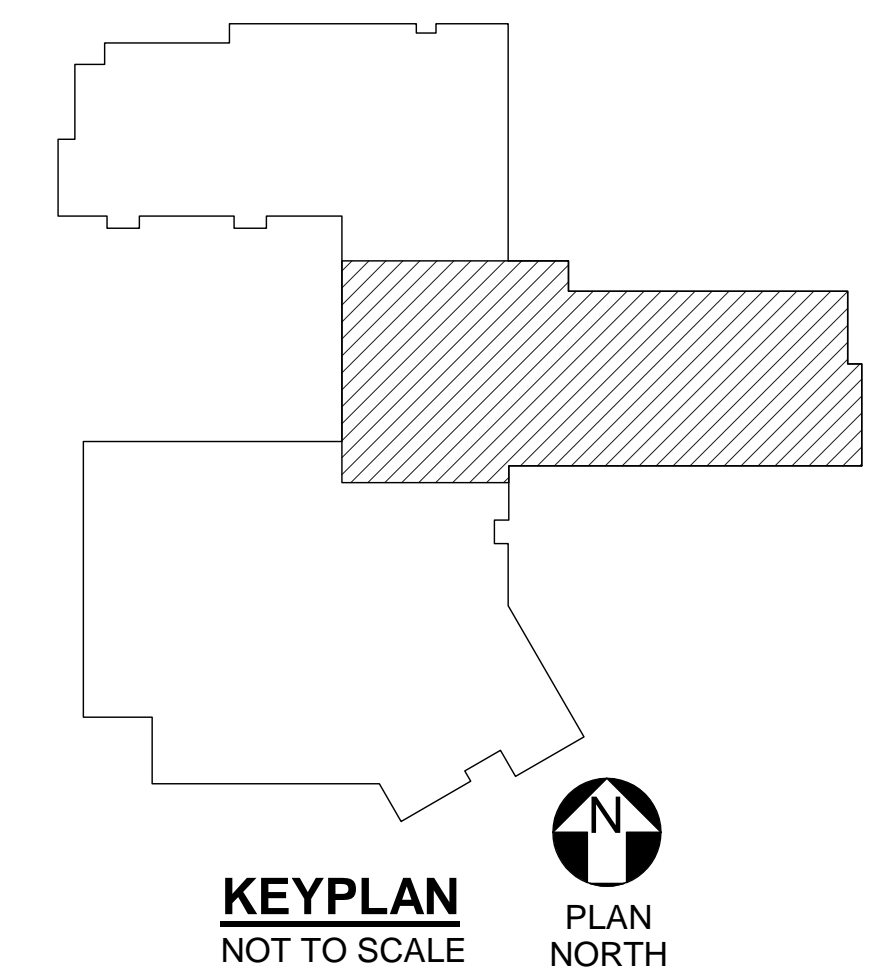
**DRAWING NOTE**

1. PROVIDE AND SIZE COMMUNICATIONS PATHWAYS FOR QUANTITY OF CABLES. COORDINATE PATHWAY ROUTES WITH ARCHITECTURAL, STRUCTURAL, AND MECHANICAL TRADES.

**DRAWING KEYNOTES**

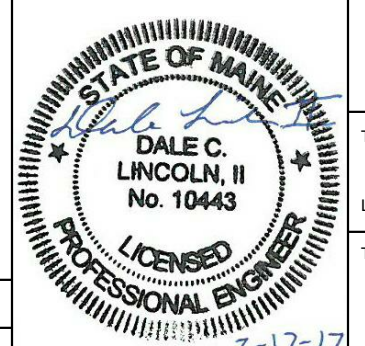
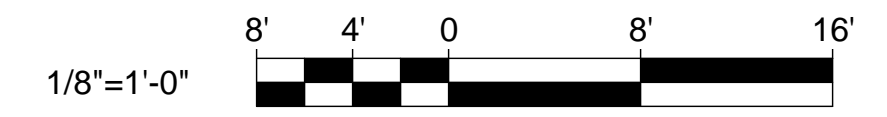
- 1 MOUNT UNDER CANOPY.
- 2 LOCATE CENTERED ABOVE SMARTBOARD.
- 3 FOR PROJECTOR. COORDINATE LOCATION IN THE FIELD.

**1 FIRST FLOOR TECHNOLOGY PART PLAN B**  
ET102 SCALE: 1/8" = 1'-0"



**KEYPLAN**  
NOT TO SCALE  
**PLAN**  
NORTH

**GRAPHIC SCALE**



**STATE OF MAINE**  
**PUBLIC SCHOOL PROJECT**  
TITLE PORTLAND PUBLIC SCHOOLS  
NEW FRED P. HALL ELEMENTARY SCHOOL  
LOCATION 23 ORONO ROAD, PORTLAND, ME  
TITLE THIS DWG.  
FIRST FLOOR TECHNOLOGY PART PLAN B

DRAWN BY: BPD  
CHECK BY: DCL

**OAK POINT**  
ASSOCIATES  
ARCHITECTURE • ENGINEERING • PLANNING  
231 Main Street, Biddeford, Maine 04005  
207.283.9192

NO.	DATE	DESCRIPTION	BY

DATE 03/17/17

DRAWING NO.  
**ET102**  
SHEET NO.  
303 OF 312