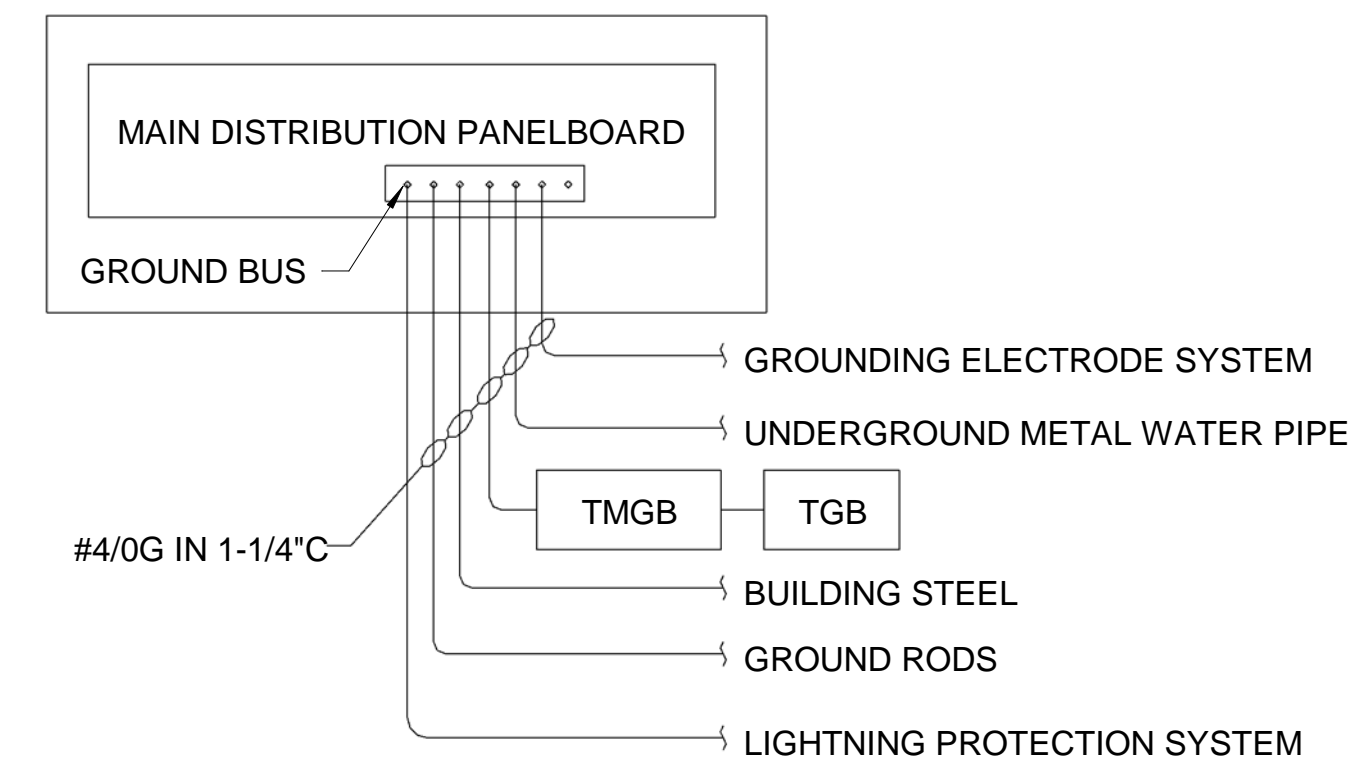
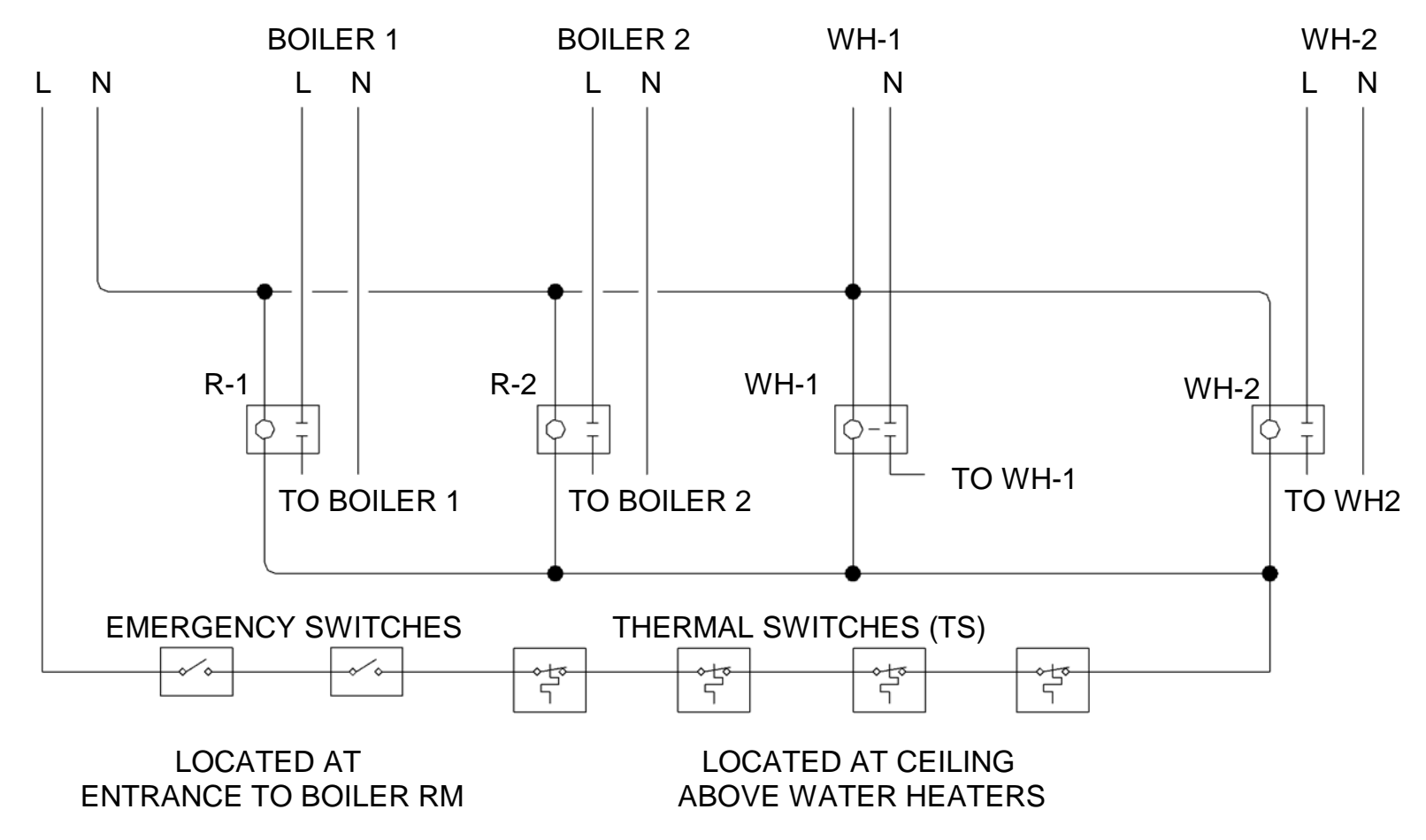


**1 TRANSFORMER GROUNDING DETAIL**  
EP501 SCALE: NOT TO SCALE



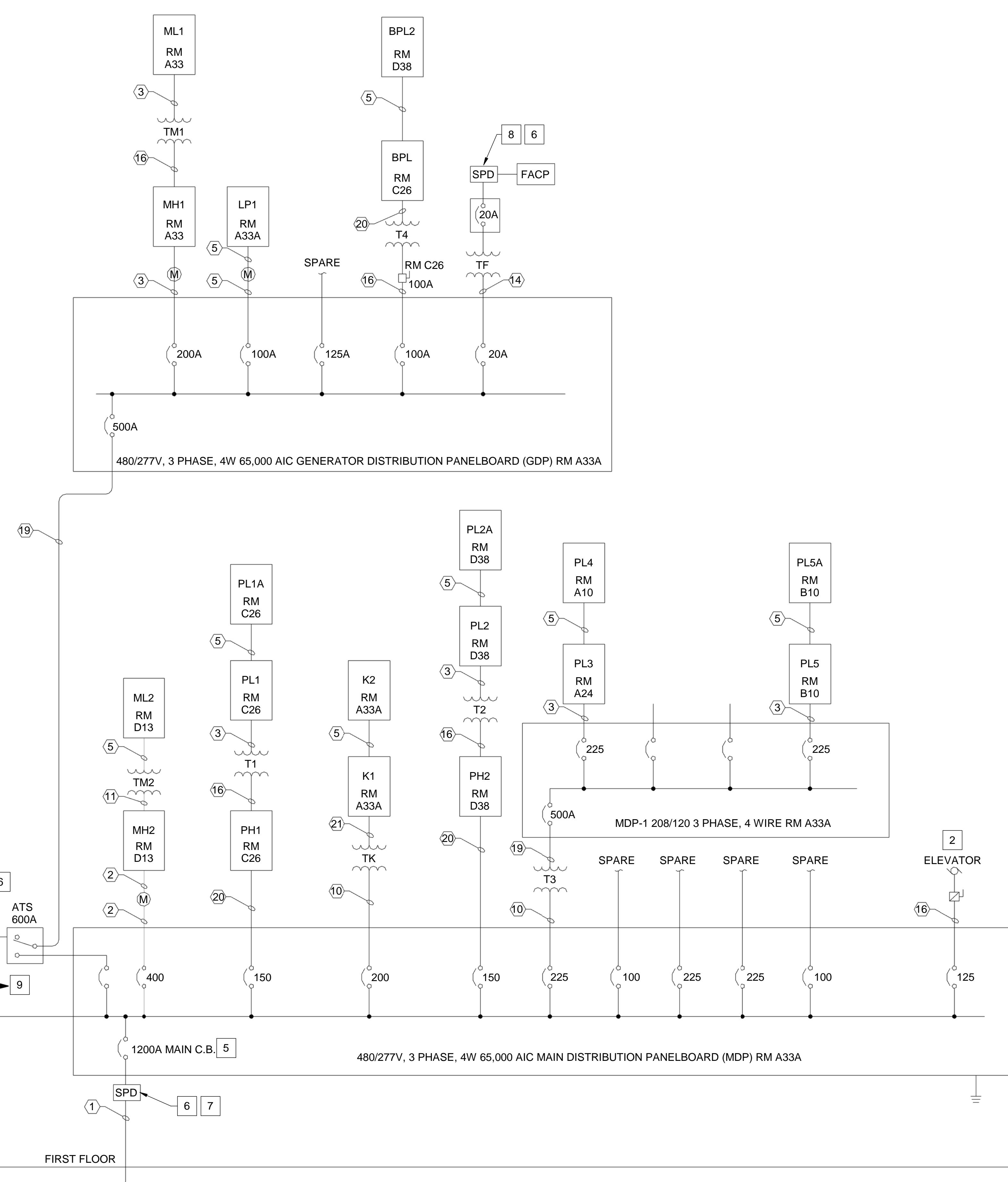
**2 GROUNDING ELECTRODE SYSTEM DETAIL**  
EP501 SCALE: NOT TO SCALE



**4 BOILER WIRING DIAGRAM**  
EP501 SCALE: NOT TO SCALE

**DRAWING KEYNOTES**

- 1 COORDINATE WITH UTILITY FOR INSTALLATION OF TRANSFORMER, PAD, CONDUIT, AND PRIMARY CONDUCTORS.
- 2 PROVIDE SHUNT TRIP CIRCUIT BREAKER FOR ELEVATOR. COMPLY WITH NEC ARTICLE 620.51.
- 3 NOT USED.
- 4 UTILITY METER AND CT CABINET. INSTALL ON PEDESTAL AT TRANSFORMER.
- 5 PROVIDE GROUND FAULT PROTECTION.
- 6 SPD SHALL COMPLY WITH REQUIREMENTS OF UL MASTER LABEL LIGHTNING PROTECTION SYSTEM.
- 7 PROVIDE TYPE 1 SPD.
- 8 PROVIDE TYPE 2 SPD.
- 9 PROVIDE CIRCUITS FOR BATTERY CHARGER, JACKET WATER HEATER, ALTERNATOR STRIP HEATER, BATTERY HEATER, GFCI OUTLET AND SPACE HEATER AT GENERATOR. REFER TO MDP-1 ON SHEET EP602.



**3 ONE-LINE DIAGRAM**  
EP501 SCALE: NOT TO SCALE

WIRING SCHEDULE			
#	# SETS	WIRE SIZE	CONDUIT SIZE
1	4	4 # 350KCMIL	3"
2	1	4 # 500KCMIL + # 3G	3-1/2"
3	1	4 # 4/0 + # 4G	2-1/2"
4	1	4 # 3/0 + # 6G	2-1/2"
5	1	4 # 1 + # 6G	1-1/2"
6	1	3 # 2 + # 6G	1-1/2"
7	1	3 # 12 + # 12G	3/4"
8	1	3 # 2 + # 8G	1-1/4"
9	1	3 # 10 + # 10G	3/4"
10	1	3 # 4/0 + # 4G	2"
11	1	3 # 6 + # 10G	1"
12	1	3 # 8 + # 10G	3/4"
13	1	3 # 10 + # 10G	3/4"
14	1	3 # 12 + # 12G	3/4"
15	1	2 # 6 + # 10G	3/4"
16	1	3 # 1 + # 6G	1-1/2"
17	2	4 # 250 + # 2G	4"
18	1	8 # 10 + # 10G	4"
19	2	4 # 250 + # 2G	2-1/2"
20	1	4 # 1/0 + # 6G	2"
21	2	4 # 3/0 + # 3G	2"

TRANSFORMER SCHEDULE		
TAG	KVA	VOLTS
T1	75	480Δ- 208Y/120
T2	75	480Δ- 208Y/120
T3	150	480Δ- 208Y/120
T4	45	480Δ- 208Y/120
TK	112.5	480Δ- 208Y/120
TM1	75	480Δ- 208Y/120
TM2	30	480Δ- 208Y/120
TF	2	480A - 120

		<b>STATE OF MAINE</b> <b>PUBLIC SCHOOL PROJECT</b> TITLE PORTLAND PUBLIC SCHOOLS NEW FRED P. HALL ELEMENTARY SCHOOL LOCATION 23 ORONO ROAD, PORTLAND, ME TITLE THIS DWG. ONE-LINE DIAGRAM AND DETAILS	
		DRAWN BY: BPD CHECK BY: DCL	
NO. DATE	DESCRIPTION	BY	DATE
	REVISIONS		03/17/17