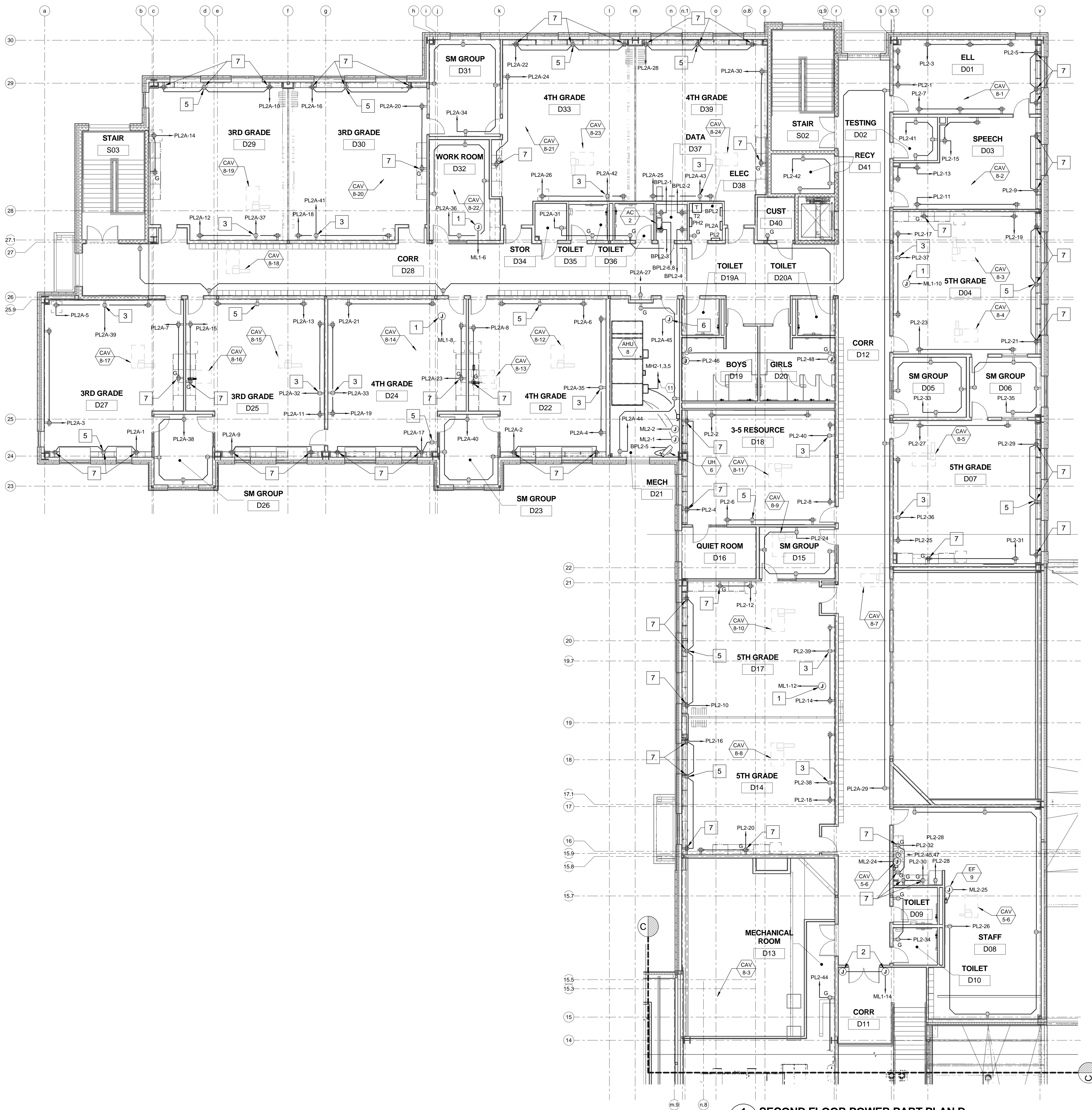


DRAWING NOTE

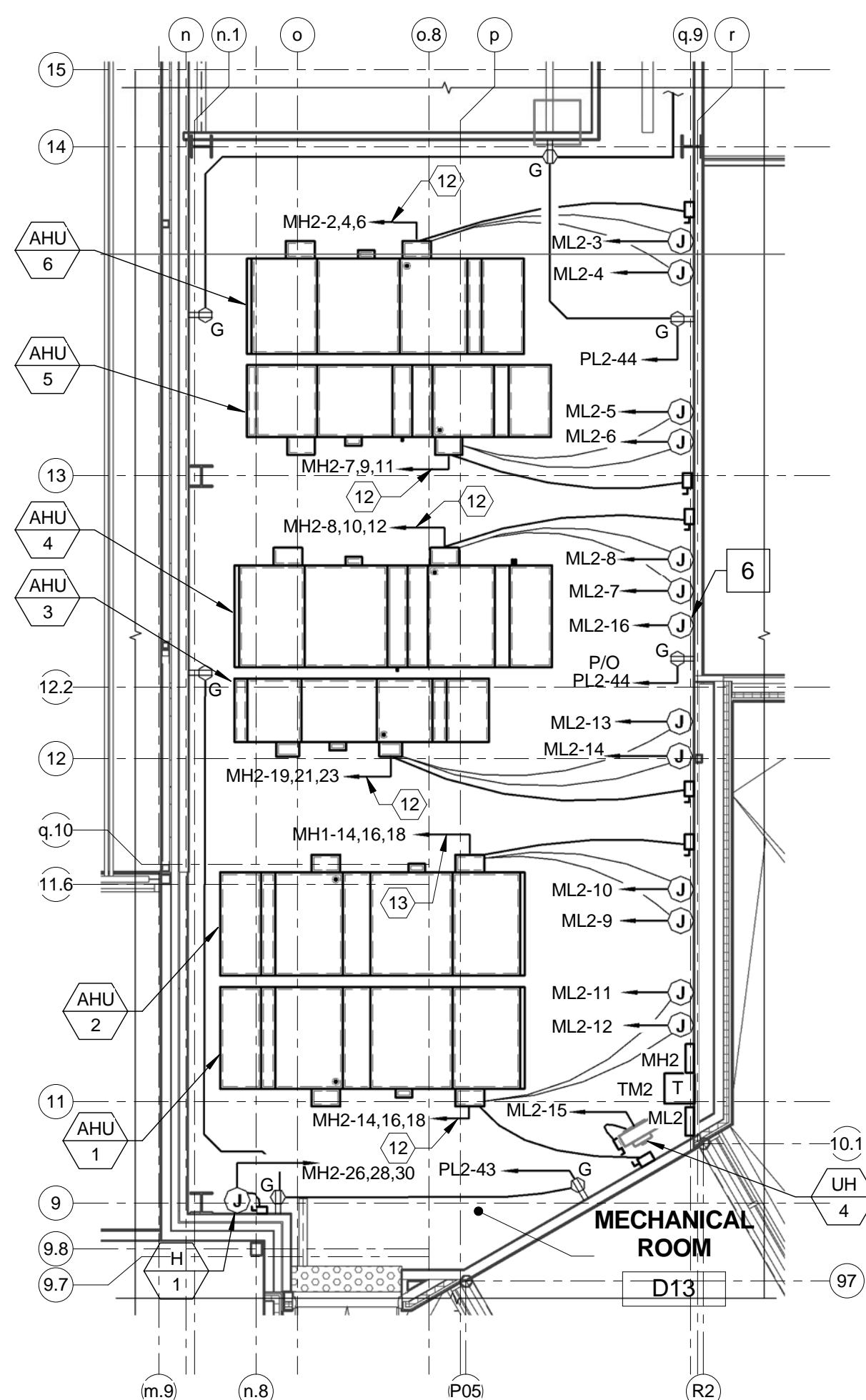
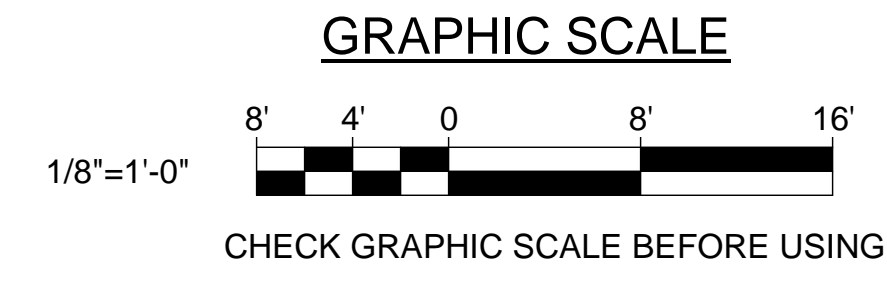
1. REFER TO SHEET EP501 FOR WIRING SCHEDULE.

DRAWING KEYNOTES

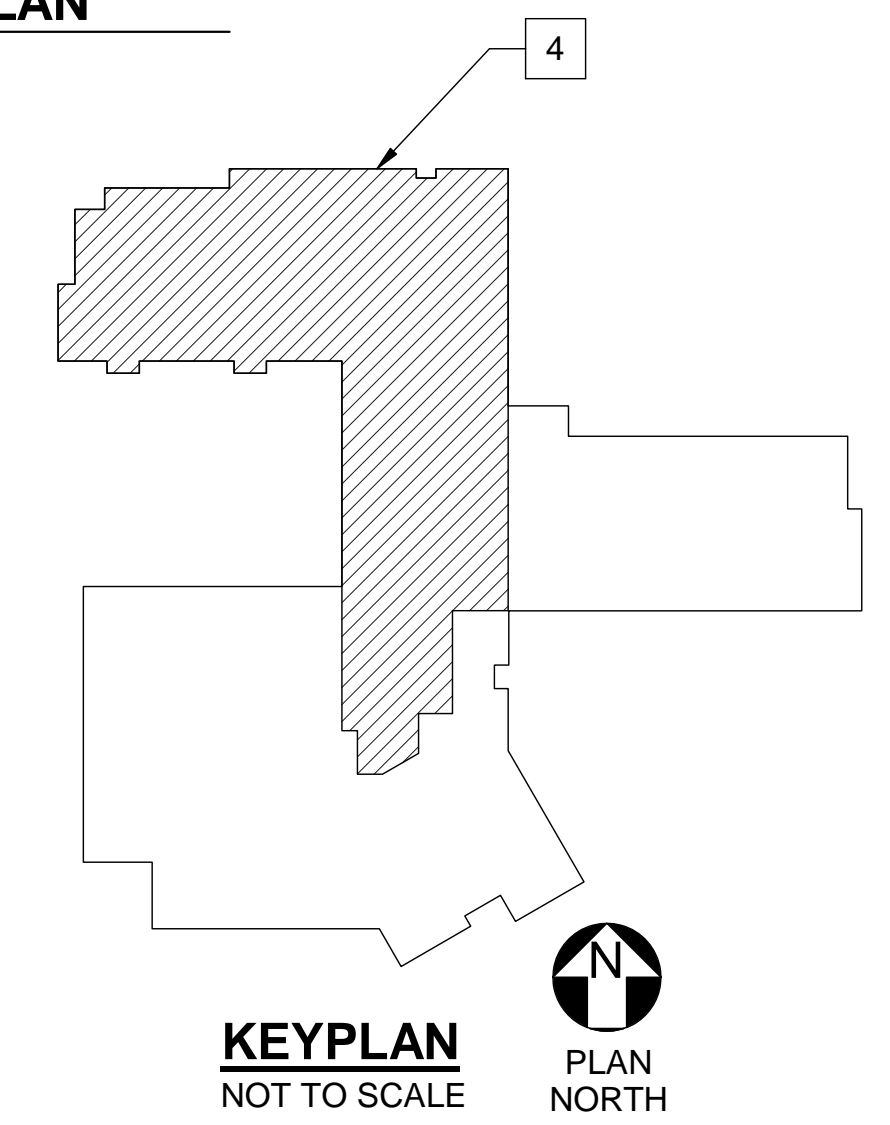
1. CONNECT CIRCUIT FROM JUNCTION BOX TO 24V TRANSFORMER PROVIDED BY MECHANICAL CONTRACTOR.
2. PROVIDE CONNECTION TO MAGNETIC DOOR HOLDER.
3. LOCATE RECEPTACLE CENTERED ABOVE SMARTBOARD.
4. PROVIDE A LIGHTNING PROTECTION SYSTEM FOR THE ENTIRE BUILDING. PROVIDE A UL MASTER LABEL. THE LIGHTNING PROTECTION SYSTEM SHALL CONFORM TO NFPA 780, UL96 AND UL96A. LIGHTNING PROTECTION INSTALLER SHALL PROVIDE MATERIALS AND LABOR THAT IS NECESSARY FOR THE LIGHTNING PROTECTION SYSTEMS TO RECEIVE A UL MASTER LABEL.
5. PROVIDE RECEPTACLE FOR SOUND AMPLIFICATION SYSTEM. COORDINATE LOCATION WITH OWNER.
6. PROVIDE CONNECTION FOR TRAP PRIMER.
7. MOUNT 6" ABOVE COUNTERTOP OR CABINET.



1 SECOND FLOOR POWER PART PLAN D
EP104 SCALE: 1/8" = 1'-0"



2 MECHANICAL ROOM POWER PART PLAN
EP104 SCALE: 1/8" = 1'-0"



KEYPLAN
NOT TO SCALE
PLAN
NORTH

		STATE OF MAINE PUBLIC SCHOOL PROJECT TITLE: PORTLAND PUBLIC SCHOOLS NEW FRED P. HALL ELEMENTARY SCHOOL LOCATION: 23 ORONO ROAD, PORTLAND, ME TITLE THIS DWG: SECOND FLOOR POWER PART PLAN D	
DRAWN BY: BPD CHECK BY: DCL	NO. DATE DESCRIPTION REVISIONS	BY NO. DATE 03/17/17	OAK POINT ASSOCIATES ARCHITECTURE • ENGINEERING • PLANNING 231 Main Street, Biddeford, Maine 04005 207.283.0192