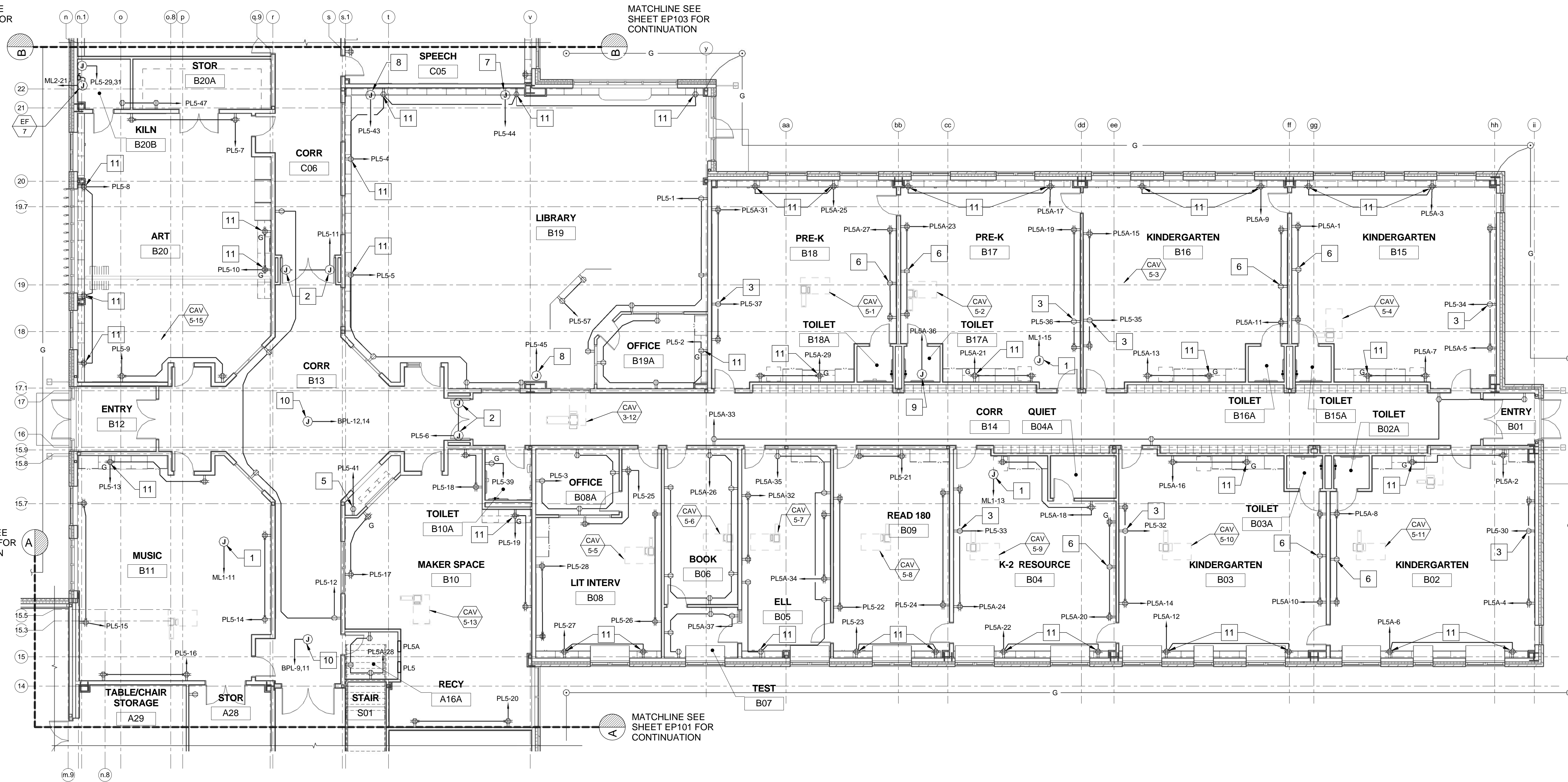


MATCHLINE SEE SHEET EP103 FOR CONTINUATION

MATCHLINE SEE SHEET EP103 FOR CONTINUATION

MATCHLINE SEE SHEET EP101 FOR CONTINUATION

MATCHLINE SEE SHEET EP101 FOR CONTINUATION



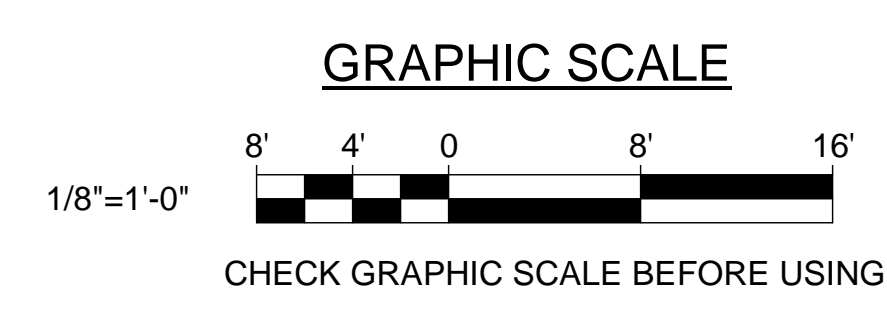
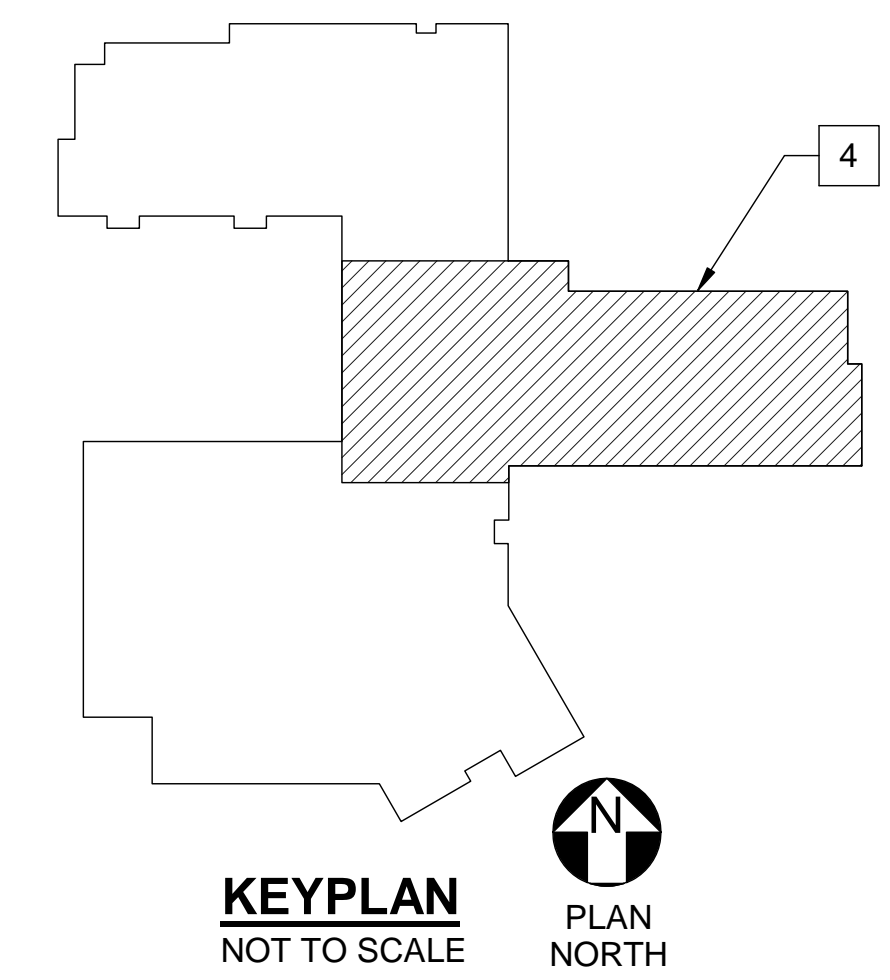
1 FIRST FLOOR POWER PART PLAN B
EP102 SCALE: 1/8" = 1'-0"

DRAWING NOTE

- 1. REFER TO SHEET EP501 FOR WIRING SCHEDULE.

DRAWING KEYNOTES

- 1 CONNECT CIRCUIT FROM JUNCTION BOX TO 24V TRANSFORMER PROVIDED BY MECHANICAL CONTRACTOR.
- 2 PROVIDE CONNECTIONS TO MAGNETIC DOOR HOLDER.
- 3 LOCATE RECEPTACLE CENTERED ABOVE SMARTBOARD.
- 4 PROVIDE A LIGHTNING PROTECTION SYSTEM FOR THE ENTIRE BUILDING. PROVIDE A UL MASTER LABEL. THE LIGHTNING PROTECTION SYSTEM SHALL CONFORM TO NFPA 780, UL96 AND UL96A. LIGHTNING PROTECTION INSTALLER SHALL PROVIDE MATERIALS AND LABOR THAT IS NECESSARY FOR THE LIGHTNING PROTECTION SYSTEMS TO RECEIVE A UL MASTER LABEL.
- 5 PROVIDE RECEPTACLES FOR FISH TANK SYSTEM. COORDINATE LOCATION WITH OWNER.
- 6 PROVIDE RECEPTACLE FOR SOUND AMPLIFICATION SYSTEM. COORDINATE LOCATION WITH OWNER.
- 7 PROVIDE CONNECTION FOR MOTORIZED SHADES, AND CONDUIT FOR PUSHBUTTON. COORDINATE LOCATION WITH SHADE INSTALLER.
- 8 PROVIDE CONNECTION FOR PROJECTION SCREEN AND CONDUIT FOR PUSHBUTTON. COORDINATE LOCATION WITH SCREEN INSTALLER.
- 9 PROVIDE CONNECTION FOR TRAP PRIMER, ABOVE CEILING.
- 10 PROVIDE CONNECTION FOR HEAT TRACE. COORDINATE WITH PLUMBING CONTRACTOR.
- 11 MOUNT 6" ABOVE COUNTERTOP OR CABINET.



		STATE OF MAINE PUBLIC SCHOOL PROJECT TITLE: PORTLAND PUBLIC SCHOOLS NEW FRED P. HALL ELEMENTARY SCHOOL LOCATION: 23 ORONO ROAD, PORTLAND, ME TITLE THIS DWG: FIRST FLOOR POWER PART PLAN B 2-17-17	
DRAWN BY: BPD CHECK BY: DCL	BY: NO. DATE: 03/17/17	OAK POINT ASSOCIATES ARCHITECTURE • ENGINEERING • PLANNING 231 Main Street, Biddeford, Maine 04005 207.283.9192	DRAWING NO: EP102 SHEET NO: 288 OF 312
NO. DATE	DESCRIPTION	BY	REVISIONS