

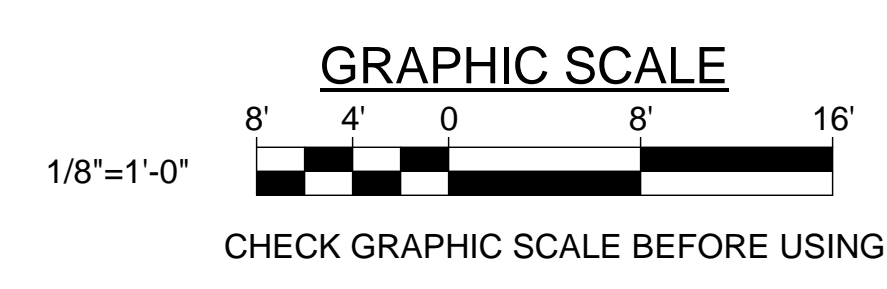
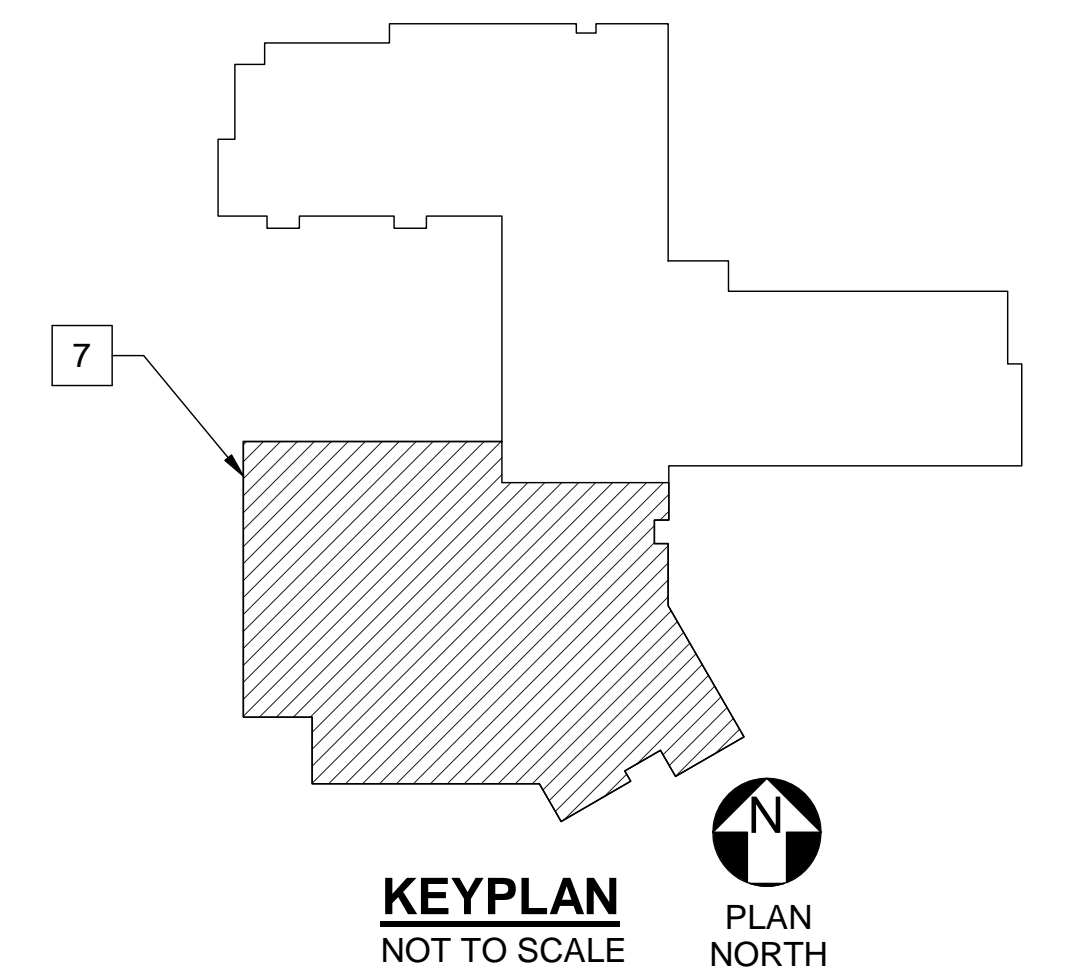
DRAWING NOTE

- REFER TO SHEET EP501 FOR WIRING SCHEDULE.

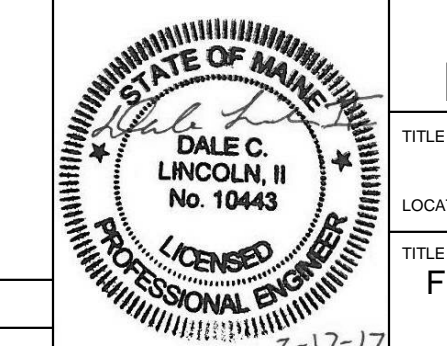
DRAWING KEYNOTES

- CONNECT CIRCUIT FROM JUNCTION BOX TO 24V TRANSFORMER PROVIDED BY MECHANICAL CONTRACTOR.
- PROVIDE CONNECTION TO MAGNETIC DOOR HOLDER.
- LOCATE JUNCTION BOX FOR HOOP OPERATOR 12'-0" AFF. PROVIDE 3/4" CONDUIT TO CONTROLLER PUSHBUTTON STATION. COORDINATE LOCATION WITH HOOP INSTALLER.
- PROVIDE POWER FOR AUTOMATIC FAUCETS.
- PROVIDE CONNECTION TO OVERHEAD DOORS.
- PROVIDE DOOR OPERATOR.
- PROVIDE A LIGHTNING PROTECTION SYSTEM FOR THE ENTIRE BUILDING. PROVIDE A UL MASTER LABEL. THE LIGHTNING PROTECTION SYSTEM SHALL CONFORM TO NFPA 780, UL96 AND UL96A. LIGHTNING PROTECTION INSTALLER SHALL PROVIDE MATERIALS AND LABOR THAT IS NECESSARY FOR THE LIGHTNING PROTECTION SYSTEMS TO RECEIVE A UL MASTER LABEL.
- PROVIDE CONNECTION TO TELESCOPING BLEACHERS. PROVIDE 3/4" CONDUIT TO CONTROLLER PUSHBUTTON STATION. COORDINATE LOCATION WITH BLEACHER INSTALLER.
- PROVIDE CONNECTION TO DIVIDER. PROVIDE 3/4" CONDUIT TO CONTROLLER PUSHBUTTON STATION. COORDINATE LOCATION WITH DIVIDER INSTALLER.
- PROVIDE CONNECTION FOR POWERED SHADES. COORDINATE WITH SHADE INSTALLER.
- COORDINATE RECEPTACLE HEIGHT WITH TELEVISION.
- PROVIDE CONNECTION TO ELECTRIC SPRINKLER BELL.
- PROVIDE RECESSED JUNCTION BOX CENTERED IN BACK WALL OF POCKET DOORS. COORDINATE WITH DOOR INSTALLER.
- JUNCTION BOX FOR SITE LIGHTING.
- FOR LCD SCREEN. MOUNT 60" AFF.
- PROVIDE CONNECTION FOR PROJECTION SCREEN, AND CONDUIT FOR PUSHBUTTON. COORDINATE LOCATION WITH SCREEN INSTALLER.
- PROVIDE CEILING MOUNTED RECEPTACLE FOR PROJECTOR.
- PROVIDE CONNECTION FOR TRAP PRIMER.
- CONNECTION FOR FLAGPOLE.
- MOUNT 6" ABOVE COUNTERTOP OR CABINET.
- PROVIDE CIRCUITS FOR GENERATOR. REFER TO MDP-1, SHEET EP601.
- FOR PA SYSTEM. COORDINATE LOCATION IN THE FIELD.

1 FIRST FLOOR POWER PART PLAN A
EP101/ SCALE: 1/8" = 1'-0"



NO. DATE		DESCRIPTION	BY	NO.
REVISIONS				
		DATE	03/17/17	



STATE OF MAINE PUBLIC SCHOOL PROJECT
 TITLE: PORTLAND PUBLIC SCHOOLS
 NEW FRED P. HALL ELEMENTARY SCHOOL
 LOCATION: 23 ORONO ROAD, PORTLAND, ME
 TITLE THIS DWG: FIRST FLOOR POWER PART PLAN A
 2-17-17

OAK POINT ASSOCIATES
 ARCHITECTURE • ENGINEERING • PLANNING
 231 Main Street, Biddeford, Maine 04005 207.283.9192

DRAWING NO. EP101
 SHEET NO. 287 OF 312