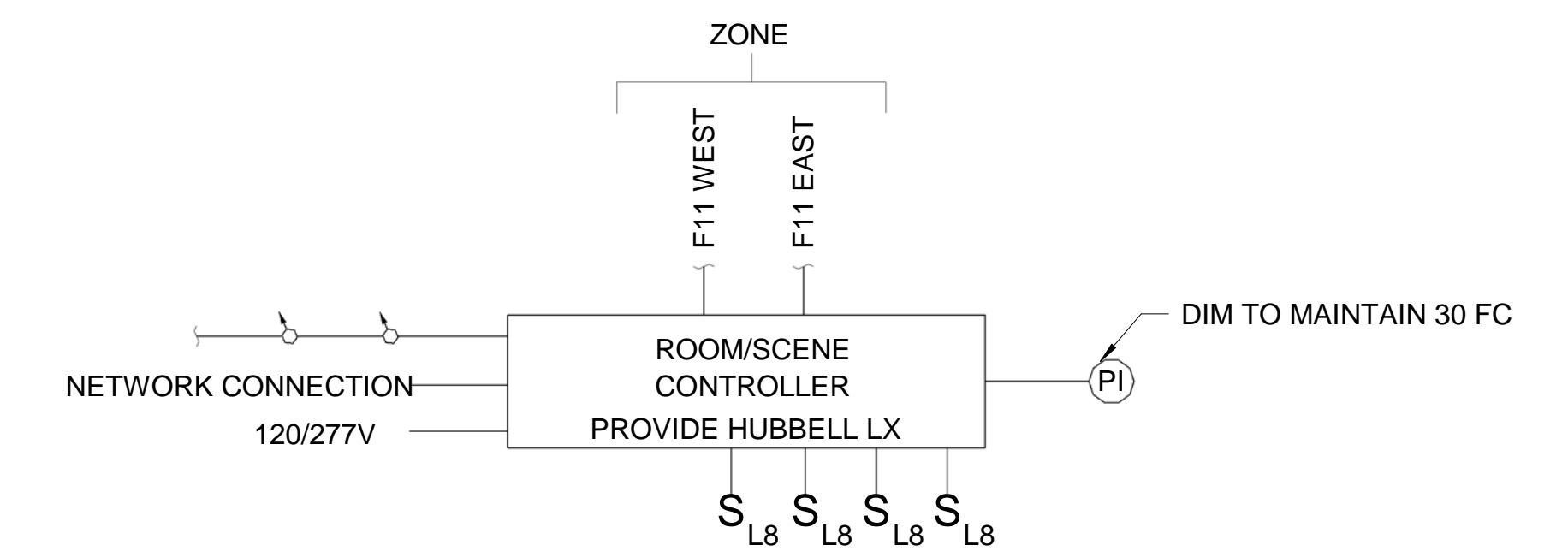


LIGHTING FIXTURE SCHEDULE										
TYPE	DESCRIPTION	SOURCE	LUMENS	VOLTS	W/V/A	MOUNTING	NOTES	MANUFACTURER	CATALOG NUMBER	
A8	DIRECT/INDIRECT PENDANT MOUNT	LED	10996	277	87.2	AIRCRAFT CABLE	1,3	FINELITE	SI2LED-ID-DC08'-3E-V-H-835-FTO-SC-277-FA-CE	
A12	DIRECT/INDIRECT PENDANT MOUNT	LED	16494	277	130.8	AIRCRAFT CABLE	1,3	FINELITE	SI2LED-ID-DC012'-3E-V-H-835-FTO-SC-277-FA-CE	
A16	DIRECT/INDIRECT PENDANT MOUNT	LED	21992	277	174.4	AIRCRAFT CABLE	1,3	FINELITE	SI2LED-ID-DC016'-3E-V-H-835-FTO-SC-277-FA-CE	
A20	DIRECT/INDIRECT PENDANT MOUNT	LED	27490	277	218	AIRCRAFT CABLE	1,3	FINELITE	SI2LED-ID-DC020'-3E-V-H-835-FTO-SC-277-FA-CE	
B4, B8, B12, B16	DIRECT/INDIRECT PENDANT MOUNT	LED	3668-14672	277	32.8-131.2	PENDANT	1,3	FINELITE	HP-4-ID-S-B-9-35-TG-BG-277-FA	
C4, C8, C12	DIRECT/INDIRECT PENDANT MOUNT	LED	3228-9634	277	29.2-87.6	PENDANT	1,3	FINELITE	HP-4-ID-S-S-9-35-TG-BG-277-FA	
D1	LED PENDANT	LED	7607	277	70	PENDANT	1	BETA CALCO	20-2270-35-DS	
F1	RECESSED 2X2 DIRECT/INDIRECT	LED	2650-3050	277	25	RECESSED	1	COLUMBIA	LCAT22-35LW-EU	
F2	RECESSED 2X4 DIRECT/INDIRECT	LED	6800-7800	277	65	RECESSED	1	COLUMBIA	LCAT24-35VL-EDU	
F3	RECESSED 2X2 DIRECT/INDIRECT	LED	3550-4050	277	35	RECESSED	1	COLUMBIA	LCAT22-35HL-EDU	
F4	RECESSED 2X4 DIRECT/INDIRECT	LED	4400-5150	277	40	RECESSED	1	COLUMBIA	LCAT24-35ML-EDU	
F5	RECESSED 2X2 DIRECT/INDIRECT	LED	3200-3400	277	30	RECESSED	1	COLUMBIA	LCAT22-35ML-EDU	
F6	STRIP LIGHT	LED	2700	277	25	SURFACE	1	COLUMBIA	LAW4-35LW-EDU	
F7	WALL MOUNT	LED	2079	277	18.4	WALL MOUNT	1	FINELITE	S17-LED-ACF-PF-4'-H-9-35-277-SC	
F8	RECESSED 2X4 DIRECT/INDIRECT	LED	4100-4700	277	35	RECESSED	1	COLUMBIA	LCAT24-35LW-EDU	
F9	STRIP LIGHT	LED	5000	277	53	SURFACE	1	COLUMBIA	LAW4-35ML-EDU	
F10	RECESSED 2X4 DIRECT/INDIRECT	LED	5350-6200	277	47	RECESSED	-	COLUMBIA	LCAT24-35HL-EDU	
F11	LED INDUSTRIAL 2X4	LED	23,325-25,225	277	217	SURFACE/STRUT	-	COLUMBIA	LLHV4-35H-W-EDU-WG	
F12	LED LENSED 2X4	LED	3770-4295	277	31	RECESSED	1	COLUMBIA	LJT24-35MW-FSA12-EU	
F13	LED LENSED 2X4	LED	4140-4720	277	34	RECESSED	1	COLUMBIA	LJT24-35LW-FSA12-EU	
F14	LED LENSED 2X4	LED	3340-3805	277	27	RECESSED	1	COLUMBIA	LJT24-35VW-FSA12-EU	
F15	LED LENSED 1X4	LED	2255-2565	277	20	RECESSED	1	COLUMBIA	LJT14-35XW-FSA12-EU	
F16	WET LOCATION 1X4	LED	4850-5350	277	47	SURFACE	-	COLUMBIA	LXEM4-35ML-RFA-EU	
F17	2" RECESSED DOWNLIGHT	LED	900	277	16	RECESSED	6	PRESCOLITE	D2LED-277-2D9LED-9L-30K-9-WFL45-SS	
F18	6" RECESSED DOWNLIGHT	LED	2000	277	26	RECESSED	1	PRESCOLITE	LF6LEDG4-6LFLED7G4-35K	
F19	CIRCULAR PENDANT - 36"	LED	14462	277	144	PENDANT	1	BETA CALCO	950110-35K-WH	
F20	6" RECESSED DOWNLIGHT-HO	LED	5000	277	73	RECESSED	1	PRESCOLITE	MD6LED-5L-35K-8-FL35-SS	
F21	RECESSED SHOWER LIGHT	LED	1000	277	13	RECESSED	9	PRESCOLITE	LC6SL-6LCSL-10L-35K-9-WH-WT	
F22	2-1/2" LED DOWNLIGHT	LED	500	277	6	RECESSED	1	FOCAL POINT	FLS2D-RF-500L-WFL-277-L11-T-LS2-RD-35K-DN-WFL-CD-WH	
V1	VAPORTITE WALL MOUNT	LED	757	277	28	WALL	-	HUBBELL	VWGL-1	
G8	DIRECT/INDIRECT PENDANT	LED	9536	277	85.6	PENDANT	1,3	FINE LITE	HP-4-ID-S-H-9-35-TG-BG-277-FA	
H1	RECESSED 4" DIAMETER	LED	9000	277	94	RECESSED	1	FOCAL POINT	FSDL-44-FLXP-9000L-35K-IC-277	
W1	WALL MOUNT EXTERIOR	LED	726	277	10.8	WALL	2,4,6	LUMINAIRE LED	AEL12-3000K-277-DP	
S2	SITE LIGHT - TYPE 2	LED	4663	277	65	POLE	4,8,10	KIM	WP9S2E35-60L3K277	
S3	SITE LIGHT - TYPE 3	LED	4599	277	65	POLE	4,8,10	KIM	WP9S3E35-60L3K277	
S3N	SITE LIGHT - TYPE 3 - NEIGHBOR FRIENDLY OPTICS	LED	4599	120	65	POLE	4,8,10	KIM	WP9S3E35-60L3K277-NFO	
S4	SITE LIGHT - TYPE 4	LED	4703	277	65	POLE	4,8,10	KIM	WP9S4E35-60L3K277	
S4N	SITE LIGHT - TYPE 4 - NEIGHBOR FRIENDLY OPTICS	LED	3709	120	65	POLE	4,8,10	KIM	WP9S4E35-60L3K277-NFO	
E1	WALL MOUNT BATTERY UNIT	LED	405	277	17	WALL	5,4	DUAL LITE	PG	
EXIT SIGNS	EXIT SIGNS	LED	-	277	3.3	RECESSED/SURFACE	1	DUAL LITE	LE/S-C/W-S/D-R-N-E	

FIXTURE SCHEDULE NOTES

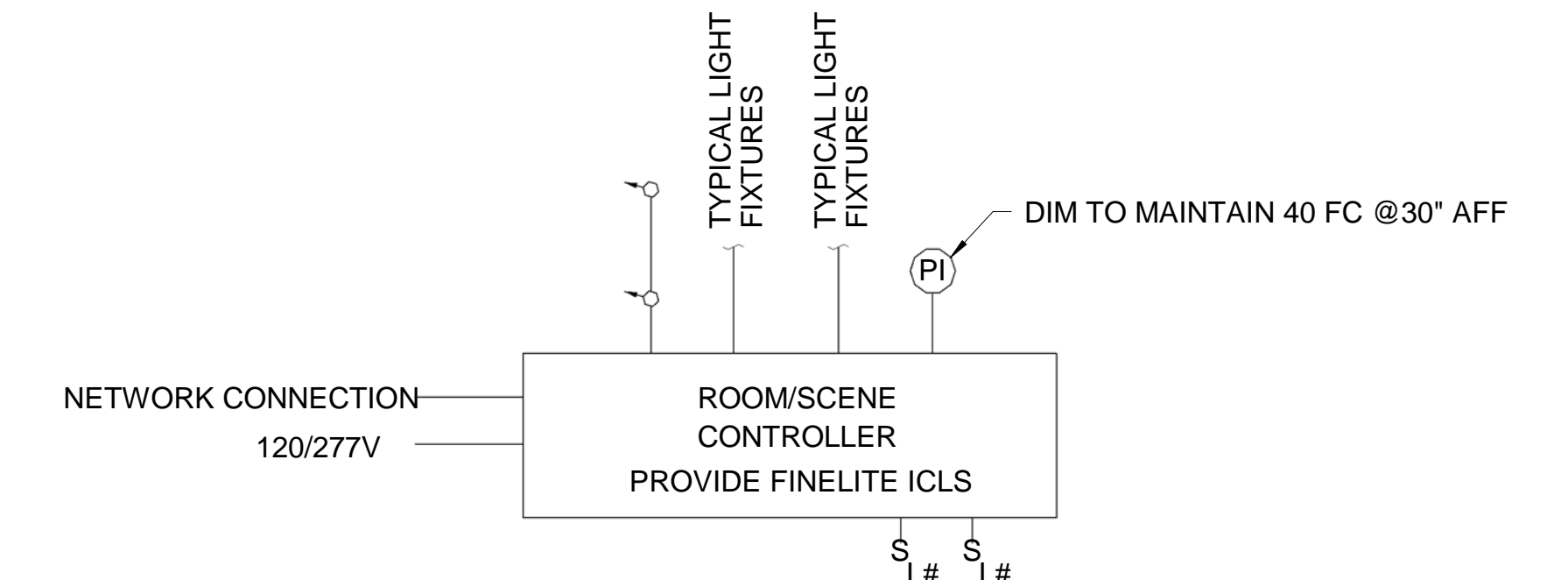
- COORDINATE MOUNTING TYPE (GRID (SAT), FLANGE (GYPSUM), OR SURFACE/SUSPENDED (NO CEILING) WITH CEILING/WALL/FLOOR TYPE.
- VERIFY MOUNTING WITH ARCHITECT BEFORE INSTALLATION OF WIRE AND JUNCTION BOXES.
- VERIFY ACTUAL LENGTH OF CONTINUOUS ROWS AS SHOWN ON LIGHTING PLANS.
- FINAL COLOR SELECTION SHALL BE MADE BY ARCHITECT FROM MANUFACTURER'S SUBMITTALS.
- SIZE MAINTENANCE FREE BATTERY TO OPERATE THE LAMPS TO BE CONNECTED FOR 1-1/2 HOURS.
- PROVIDE CONCEALED REMOTE MOUNTED EMERGENCY INVERTER(S) TO OPERATE FIXTURE BASIS OF DESIGN. DUAL-LITE LITEGEAR 250W. SIZE FOR CONNECTED LOAD.
- VERIFY LENGTH OF LINEAR FIXTURE PRIOR TO ORDERING.
- EXTERIOR FIXTURES SHALL BE CONNECTED TO EXTERIOR PHOTOCELL AND PROGRAMMABLE TIMECLOCK. FIXTURES SHALL ILLUMINATE AT 3FC. FIXTURES SHALL DIM TO FIFTY PERCENT OUTPUT AT USER SELECTED TIMES.
- FIXTURE SHALL BE LISTED FOR WET LOCATION.
- PROVIDE SWEPT ARM CONNECTED TO TAPERED POLE.



- NOTES:
- BASIS OF DESIGN: WIRING, COMPONENTS AND INSTALLATION REQUIREMENTS WILL VARY DEPENDING ON MANUFACTURER.
 - INSTALLATION OF PHOTOCELLS, OCCUPANCY SENSORS, WIRING, ETC. SHALL BE PER MANUFACTURERS RECOMMENDATIONS.
 - CONTROL WIRING SHALL BE YELLOW AND PER MANUFACTURERS RECOMMENDATION.
 - OCCUPANCY SENSORS PROVIDE AUTO ON/OFF (FIELD SELECTABLE FOR MANUAL ON/AUTO OFF) WITH 20 MIN TIME DELAY DURING AFTER HOUR SERVICE.
 - LOSS OF NORMAL POWER SHALL CLOSE RELAYS.
 - DIAGRAM INDICATES CONTROL DEVICES AND WIRING ONLY. REFER TO EL101, EL102, AND EL103 FOR BRANCH CIRCUITS.
 - PROVIDE ADDITIONAL DEVICES FOR FULL COVERAGE OF SPACE AS DIAGRAMS INDICATE DESIGN INTENT.
 - EACH SWITCH STATION SHALL BE ABLE TO TURN ON/OFF EACH LIGHTING ZONE, RAISE/LOWER EACH LIGHTING ZONE AND AUTOMATICALLY CONTROL THE LIGHTING ZONES FOR DAYLIGHT HARVESTING. THE NUMBER OF PUSHBUTTONS NEEDED WILL VARY FOR DIFFERENT MANUFACTURERS. SWITCH STATIONS SHALL HAVE ENGRAVED, LABELED DIRECTORIES ASSIGNED TO PUSHBUTTONS INDICATING CONTROL ZONES (FOR EXAMPLE: "PENDANTS", "WEST WALL" OR "SECOND FLOOR MEZZANINE").
 - PROVIDE UL924 EMERGENCY BYPASS RELAYS FOR LIGHT FIXTURES IN EGRESS PATHS
 - SWITCH BASIS OF DESIGN: HUBBELL LX SWITCH.

2 GYM LIGHTING CONTROL DETAIL

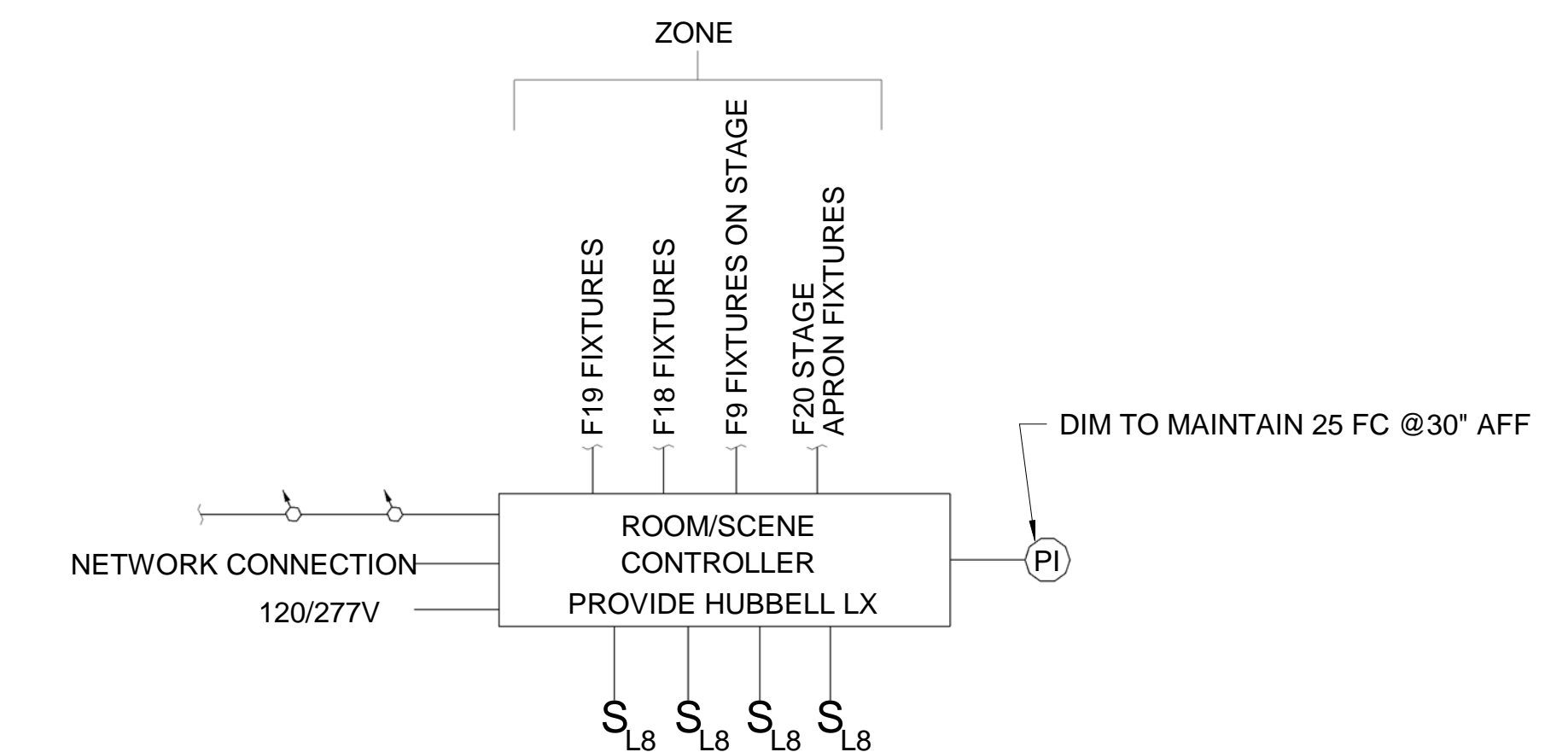
EL701 SCALE: NOT TO SCALE



- NOTES:
- BASIS OF DESIGN: WIRING, COMPONENTS AND INSTALLATION REQUIREMENTS WILL VARY DEPENDING ON MANUFACTURER.
 - INSTALLATION OF PHOTOCELLS, OCCUPANCY SENSORS, WIRING, ETC. SHALL BE PER MANUFACTURERS RECOMMENDATIONS.
 - CONTROL WIRING SHALL BE YELLOW AND PER MANUFACTURERS RECOMMENDATION.
 - OCCUPANCY SENSORS PROVIDE AUTO ON/OFF (FIELD SELECTABLE FOR MANUAL ON/AUTO OFF) WITH 20 MIN TIME DELAY DURING AFTER HOUR SERVICE.
 - LOSS OF NORMAL POWER SHALL CLOSE RELAYS.
 - DIAGRAM INDICATES CONTROL DEVICES AND WIRING ONLY. REFER TO EL101, EL102, AND EL103 FOR BRANCH CIRCUITS.
 - PROVIDE ADDITIONAL DEVICES FOR FULL COVERAGE OF SPACE AS DIAGRAMS INDICATE DESIGN INTENT.
 - EACH SWITCH STATION SHALL BE ABLE TO TURN ON/OFF EACH LIGHTING ZONE, RAISE/LOWER EACH LIGHTING ZONE AND AUTOMATICALLY CONTROL THE LIGHTING ZONES FOR DAYLIGHT HARVESTING. THE NUMBER OF PUSHBUTTONS NEEDED WILL VARY FOR DIFFERENT MANUFACTURERS. SWITCH STATIONS SHALL HAVE ENGRAVED, LABELED DIRECTORIES ASSIGNED TO PUSHBUTTONS INDICATING CONTROL ZONES (FOR EXAMPLE: "PENDANTS", "WEST WALL" OR "SECOND FLOOR MEZZANINE").
 - CONTROLS SHALL HAVE A/V MODE FOR UPLIGHT ONLY.
 - SWITCH BASIS OF DESIGN: FINELITE ICLS CONTROL STATION.

3 TYPICAL CLASSROOM/CONFERENCE RM LIGHTING CONTROL

EL701 SCALE: NOT TO SCALE

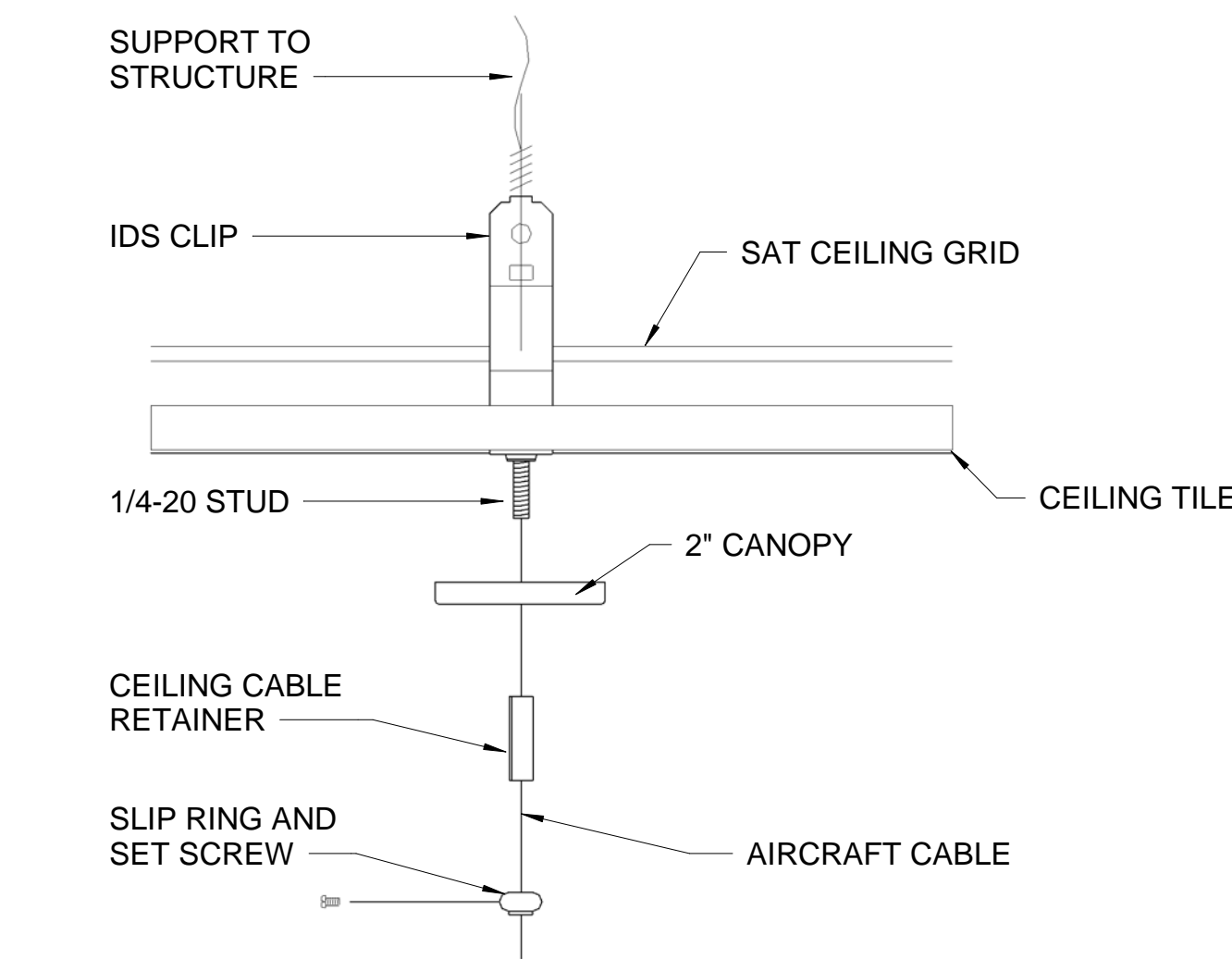


- NOTES:
- BASIS OF DESIGN: WIRING, COMPONENTS AND INSTALLATION REQUIREMENTS WILL VARY DEPENDING ON MANUFACTURER.
 - INSTALLATION OF PHOTOCELLS, OCCUPANCY SENSORS, WIRING, ETC. SHALL BE PER MANUFACTURERS RECOMMENDATIONS.
 - CONTROL WIRING SHALL BE YELLOW AND PER MANUFACTURERS RECOMMENDATION.
 - OCCUPANCY SENSORS PROVIDE AUTO ON/OFF (FIELD SELECTABLE FOR MANUAL ON/AUTO OFF) WITH 20 MIN TIME DELAY DURING AFTER HOUR SERVICE.
 - LOSS OF NORMAL POWER SHALL CLOSE RELAYS.
 - DIAGRAM INDICATES CONTROL DEVICES AND WIRING ONLY. REFER TO EL101, EL102, EL103 AND EL104 FOR BRANCH CIRCUITS.
 - PROVIDE ADDITIONAL DEVICES FOR FULL COVERAGE OF SPACE AS DIAGRAMS INDICATE DESIGN INTENT.
 - EACH SWITCH STATION SHALL BE ABLE TO TURN ON/OFF EACH LIGHTING ZONE, RAISE/LOWER EACH LIGHTING ZONE AND AUTOMATICALLY CONTROL THE LIGHTING ZONES FOR DAYLIGHT HARVESTING. THE NUMBER OF PUSHBUTTONS NEEDED WILL VARY FOR DIFFERENT MANUFACTURERS. SWITCH STATIONS SHALL HAVE ENGRAVED, LABELED DIRECTORIES ASSIGNED TO PUSHBUTTONS INDICATING CONTROL ZONES (FOR EXAMPLE: "PENDANTS", "WEST WALL" OR "SECOND FLOOR MEZZANINE").
 - PROVIDE UL924 EMERGENCY BYPASS RELAYS FOR LIGHT FIXTURES IN EGRESS PATHS.
 - CONTROLS SHALL HAVE A/V MODE FOR UPLIGHT ONLY FOR F19 FIXTURES.
 - SWITCH BASIS OF DESIGN: HUBBELL LX SWITCH.

5 CAFETERIA LIGHTING CONTROL DETAIL

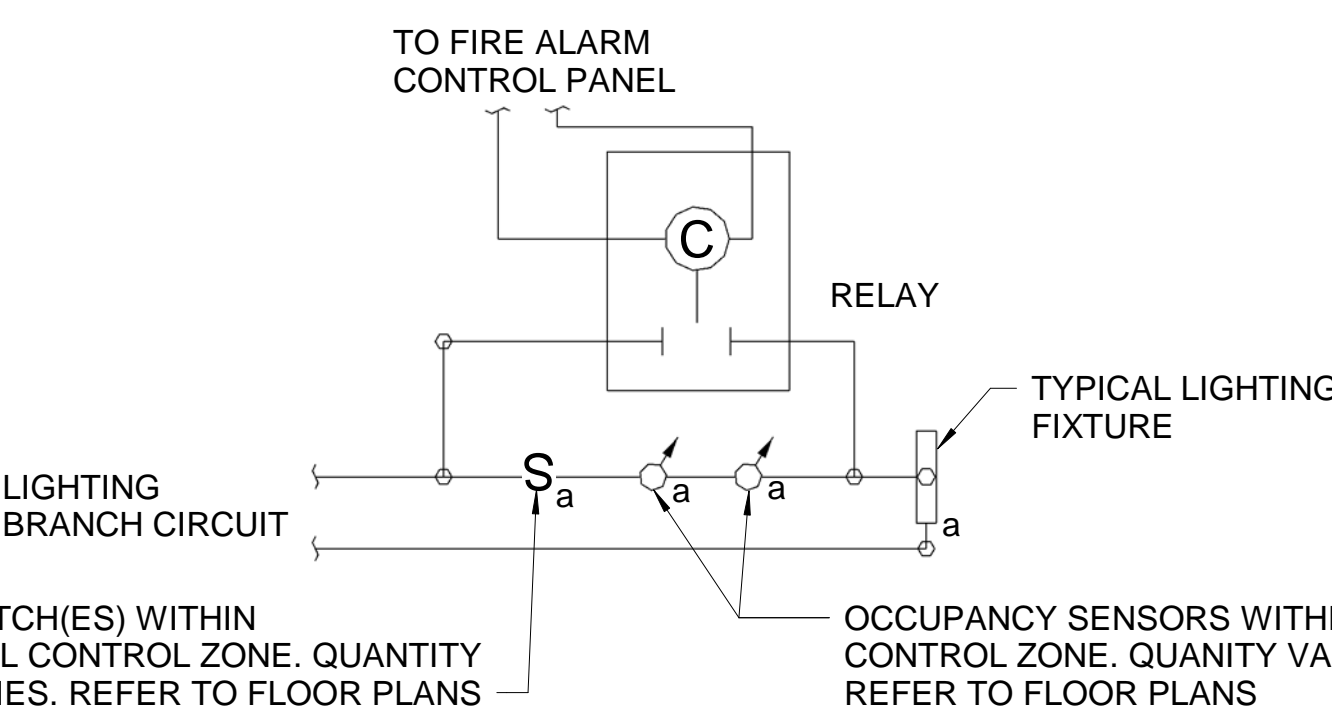
EL701 SCALE: NOT TO SCALE

STATE OF MAINE PUBLIC SCHOOL PROJECT			TITLE: PORTLAND PUBLIC SCHOOLS NEW FRED P. HALL ELEMENTARY SCHOOL LOCATION: 23 ORONO ROAD, PORTLAND, ME
TITLE THIS DWG: LIGHTING FIXTURE SCHEDULE AND DETAILS			DRAWN BY: BPD CHECK BY: DCL DATE: 03/17/17
NO.	DATE	DESCRIPTION	BY
		REVISIONS	



1 TYPICAL PENDANT FIXTURE MOUNTING DETAIL

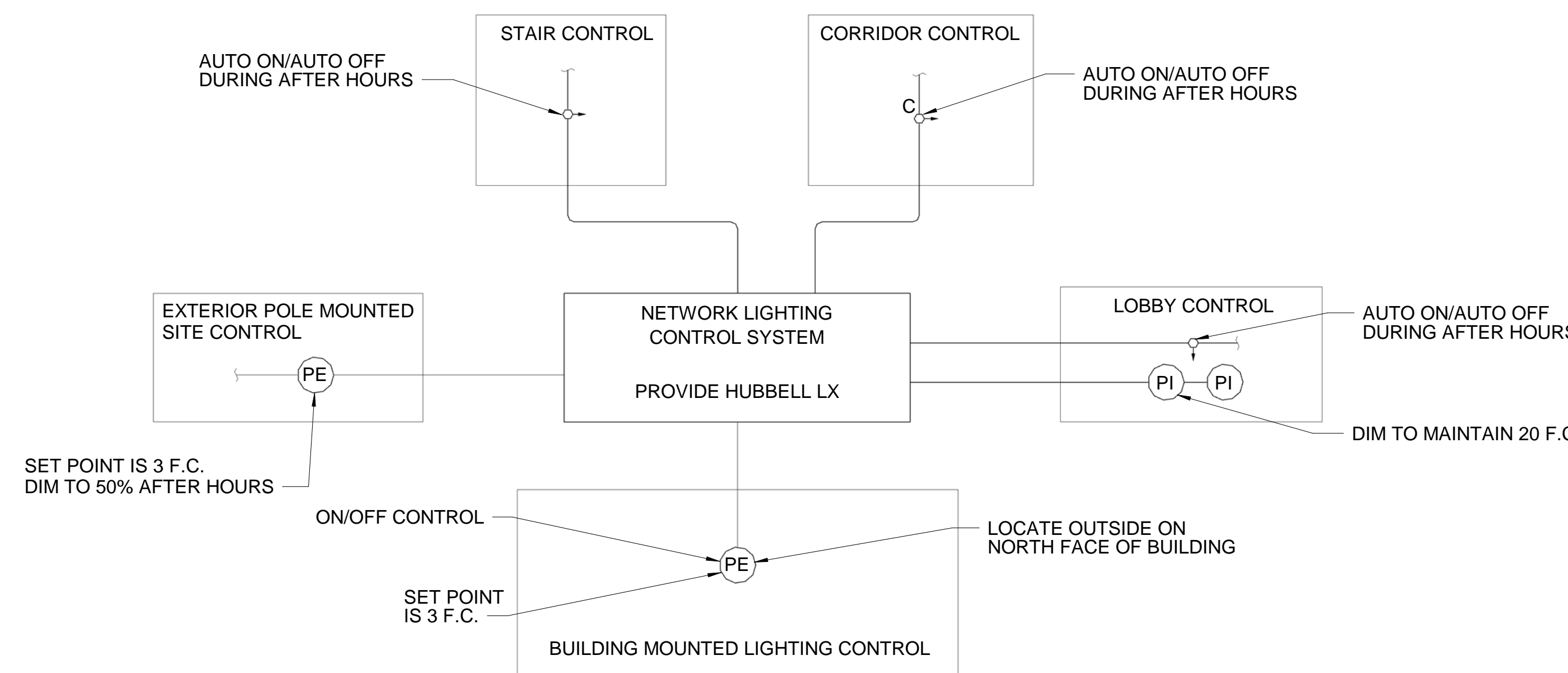
EL701 SCALE: NOT TO SCALE



4 LIGHTING BYPASS CONTROL DIAGRAM

EL701 SCALE: NOT TO SCALE

- LIGHTING BYPASS CONTROL NOTES:
- PROVIDE 24VDC RELAY WITH MINIMUM 20 AMP, 120V/277V RATED NORMALLY OPEN AND NORMALLY CLOSED CONTACTS. CONTACT SHALL CLOSE WHEN FIRE ALARM IS IN ALARM IN ORDER TO BYPASS THE OCCUPANCY SENSORS WITHIN THE CORRIDORS. RELAY SHALL BE UL LISTED FOR EMERGENCY LIGHTING CONTROL USE.
 - PROVIDE 24VDC POWER FROM THE FIRE ALARM CONTROL PANEL.
 - COORDINATE WORK WITH FIRE ALARM INSTALLER.



- NOTES:
- BASIS OF DESIGN: WIRING, COMPONENTS AND INSTALLATION REQUIREMENTS WILL VARY DEPENDING ON MANUFACTURER.
 - LIGHTING SHALL BE CONTROLLED (ON/OFF) VIA LIGHTING CONTROL SYSTEM FOR NORMAL HOURS. OCCUPANCY SENSORS AND PHOTOCELLS SHALL TRIGGER 20 MIN TEMPORARY OVERRIDE DURING AFTER HOUR SERVICE.
 - INSTALLATION OF PHOTOCELLS, OCCUPANCY SENSORS, WIRING, ETC. SHALL BE PER MANUFACTURERS RECOMMENDATIONS.
 - TIME SCHEDULES SHALL BE COORDINATED WITH OWNER AT STARTUP.
 - CONTROL WIRING SHALL BE YELLOW AND PER MANUFACTURERS RECOMMENDATION.
 - OCCUPANCY SENSORS PROVIDE AUTO ON/OFF WITH 20 MIN TIME DELAY DURING AFTER HOUR SERVICE.
 - LOSS OF NORMAL POWER SHALL CLOSE RELAYS.
 - DIAGRAM INDICATES CONTROL DEVICES AND WIRING ONLY. REFER TO EL101, EL102, EL103 AND EL104 FOR BRANCH CIRCUITS.
 - PROVIDE UL924 EMERGENCY BYPASS RELAYS FOR LIGHT FIXTURES IN EGRESS PATHS.
 - SWITCH BASIS OF DESIGN: HUBBELL LX SWITCH.

6 TYPICAL LIGHTING CONTROLS DIAGRAM

EL701 SCALE: NOT TO SCALE