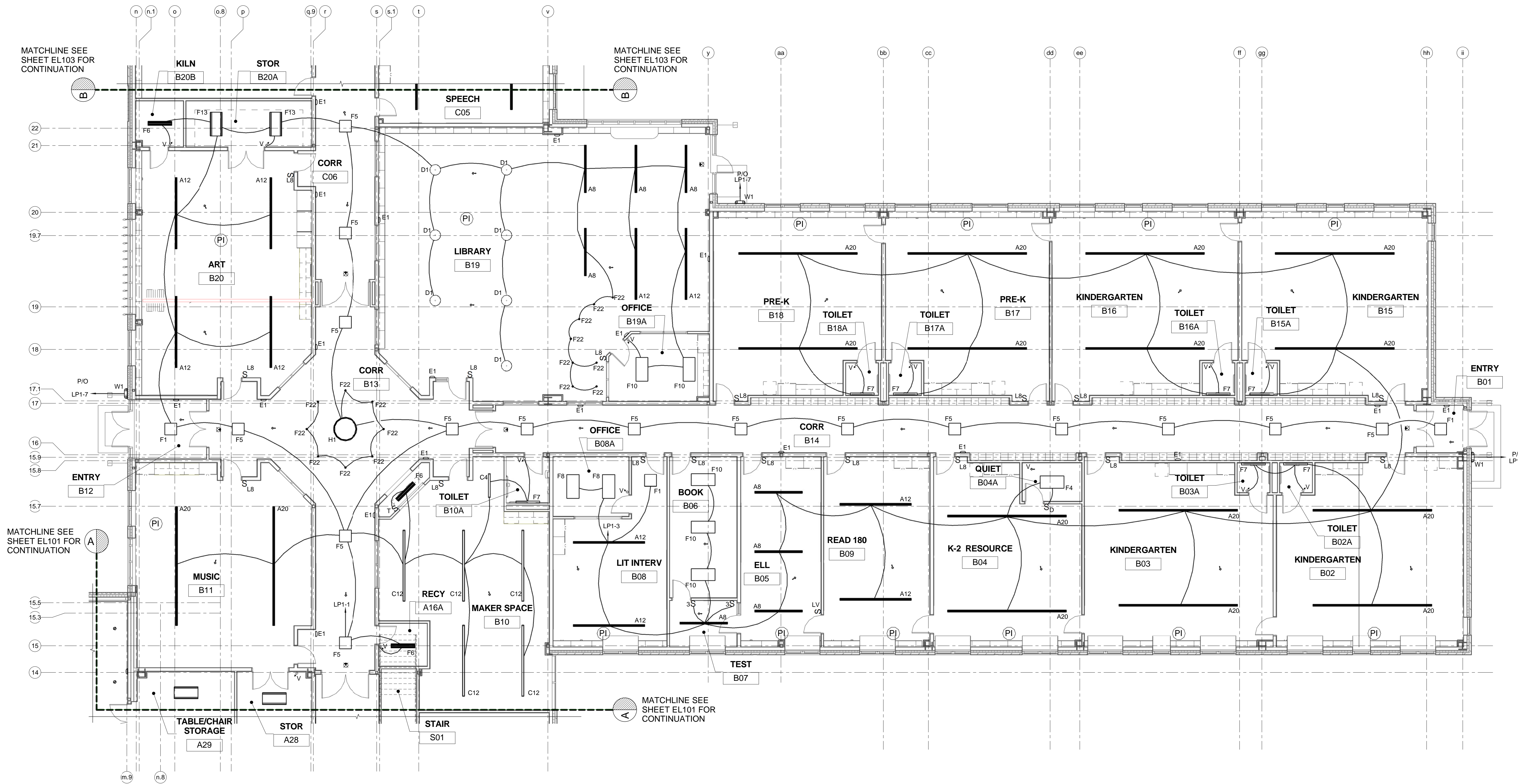
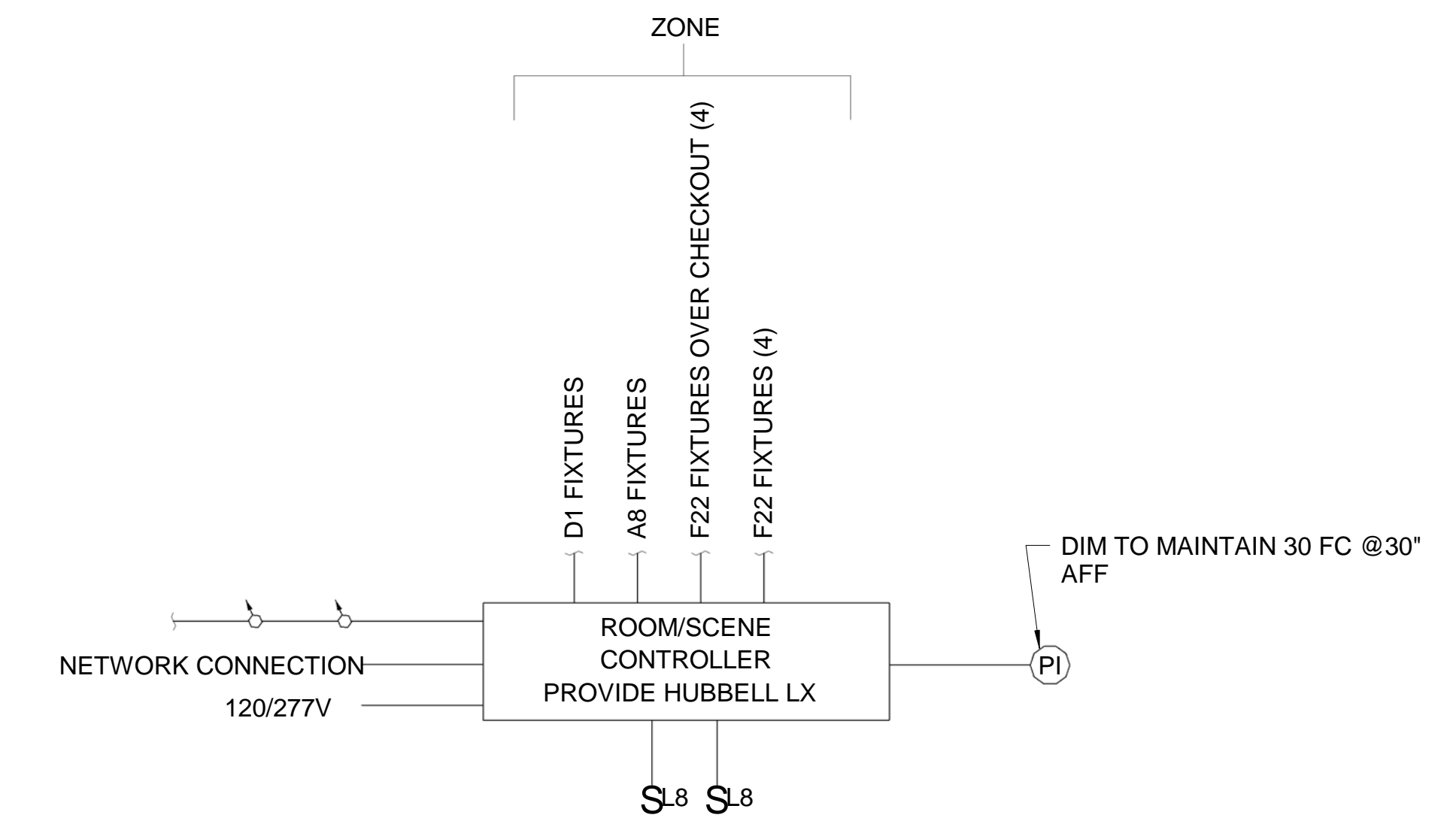


DRAWING NOTE

- CONNECT EXIT SIGNS AND EMERGENCY LIGHTS TO LOCAL LIGHTING CIRCUIT AHEAD OF ANY OCCUPANCY SENSORS, SWITCHES, ETC.

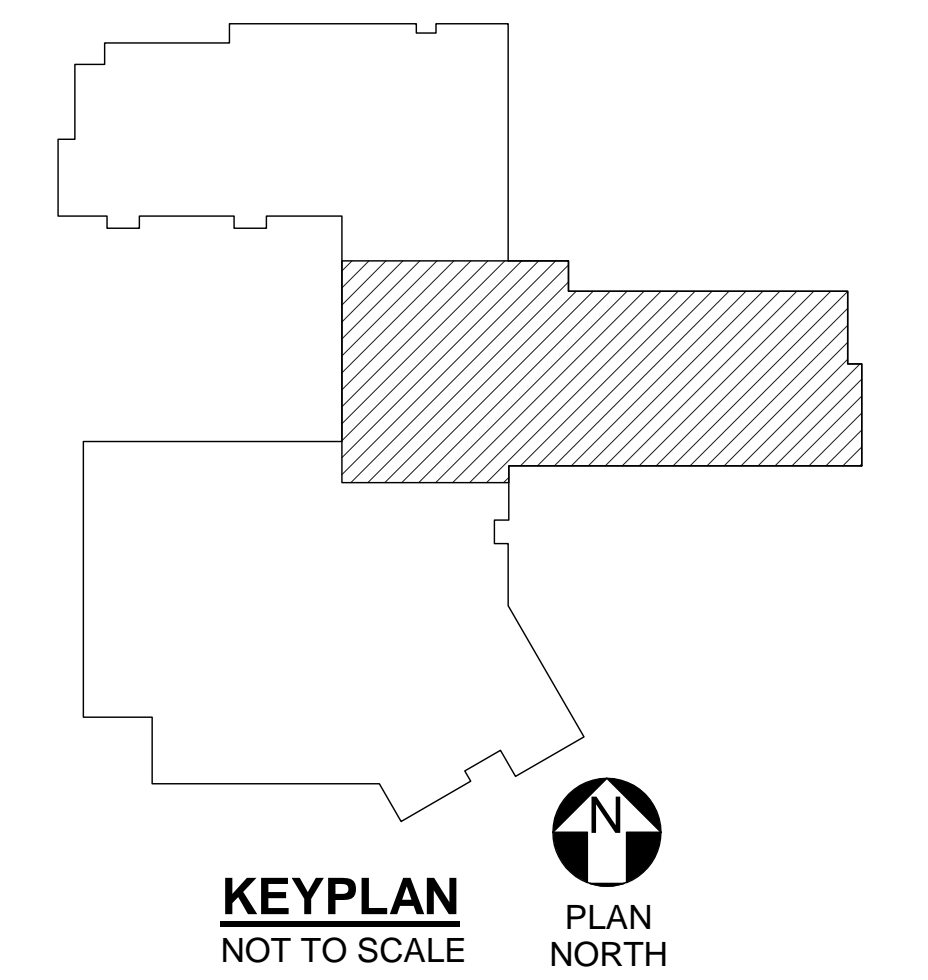
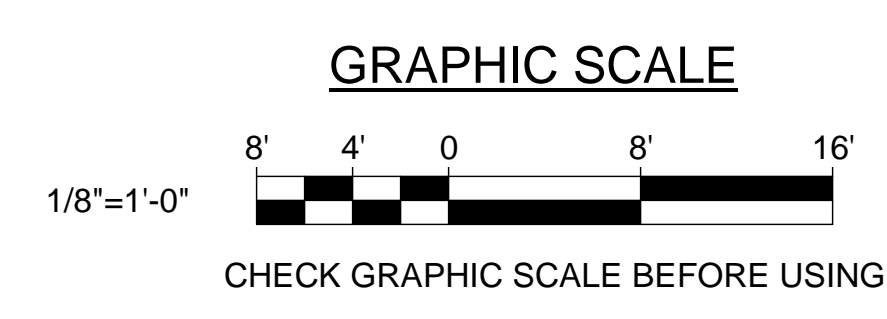


1 FIRST FLOOR LIGHTING PART PLAN B
EL102 SCALE: 1/8" = 1'-0"



- NOTES:
- BASIS OF DESIGN: WIRING, COMPONENTS AND INSTALLATION REQUIREMENTS WILL VARY DEPENDING ON MANUFACTURER.
 - INSTALLATION OF PHOTOCELLS, OCCUPANCY SENSORS, WIRING, ETC. SHALL BE PER MANUFACTURERS RECOMMENDATIONS.
 - CONTROL WIRING SHALL BE YELLOW AND PER MANUFACTURERS RECOMMENDATION.
 - OCCUPANCY SENSORS PROVIDE AUTO ON/OFF (FIELD SELECTABLE FOR MANUAL ON/AUTO OFF) WITH 20 MIN TIME DELAY DURING AFTER HOUR SERVICE.
 - LOSS OF NORMAL POWER SHALL CLOSE RELAYS.
 - DIAGRAM INDICATES CONTROL DEVICES AND WIRING ONLY. REFER TO EL101, EL102, EL103 AND EL104 FOR BRANCH CIRCUITS.
 - PROVIDE ADDITIONAL DEVICES FOR FULL COVERAGE OF SPACE AS DIAGRAMS INDICATE DESIGN INTENT.
 - EACH SWITCH STATION SHALL BE ABLE TO TURN ON/OFF EACH LIGHTING ZONE. RAISE/LOWER EACH LIGHTING ZONE AND AUTOMATICALLY CONTROL THE LIGHTING ZONES FOR DAYLIGHT HARVESTING. THE NUMBER OF PUSHBUTTONS NEEDED WILL VARY FOR DIFFERENT MANUFACTURERS. SWITCH STATIONS SHALL HAVE ENGRAVED, LABELED DIRECTORIES ASSIGNED TO PUSHBUTTONS INDICATING CONTROL ZONES (FOR EXAMPLE: "PENDANTS", "WEST WALL" OR "SECOND FLOOR MEZZANINE").
 - PROVIDE UL924 EMERGENCY BYPASS RELAYS FOR LIGHT FIXTURES IN EGRESS PATHS.
 - CONTROLS SHALL HAVE A/V MODE FOR UPLIGHT ONLY FOR A8 FIXTURES.

2 LIBRARY LIGHTING CONTROL DIAGRAM
EL102 SCALE: NOT TO SCALE



		<p>STATE OF MAINE PUBLIC SCHOOL PROJECT TITLE: PORTLAND PUBLIC SCHOOLS NEW FRED P. HALL ELEMENTARY SCHOOL LOCATION: 23 ORONO ROAD, PORTLAND, ME</p> <p>TITLE THIS DWG: FIRST FLOOR LIGHTING PART PLAN B</p>
<p>DRAWN BY: BPD CHECK BY: DCL</p>	<p>DATE: 03/17/17</p>	<p>OAK POINT ASSOCIATES</p> <p>207.283.9192</p>
<p>NO. DATE DESCRIPTION</p>	<p>BY NO.</p>	<p>298 OF 312</p>