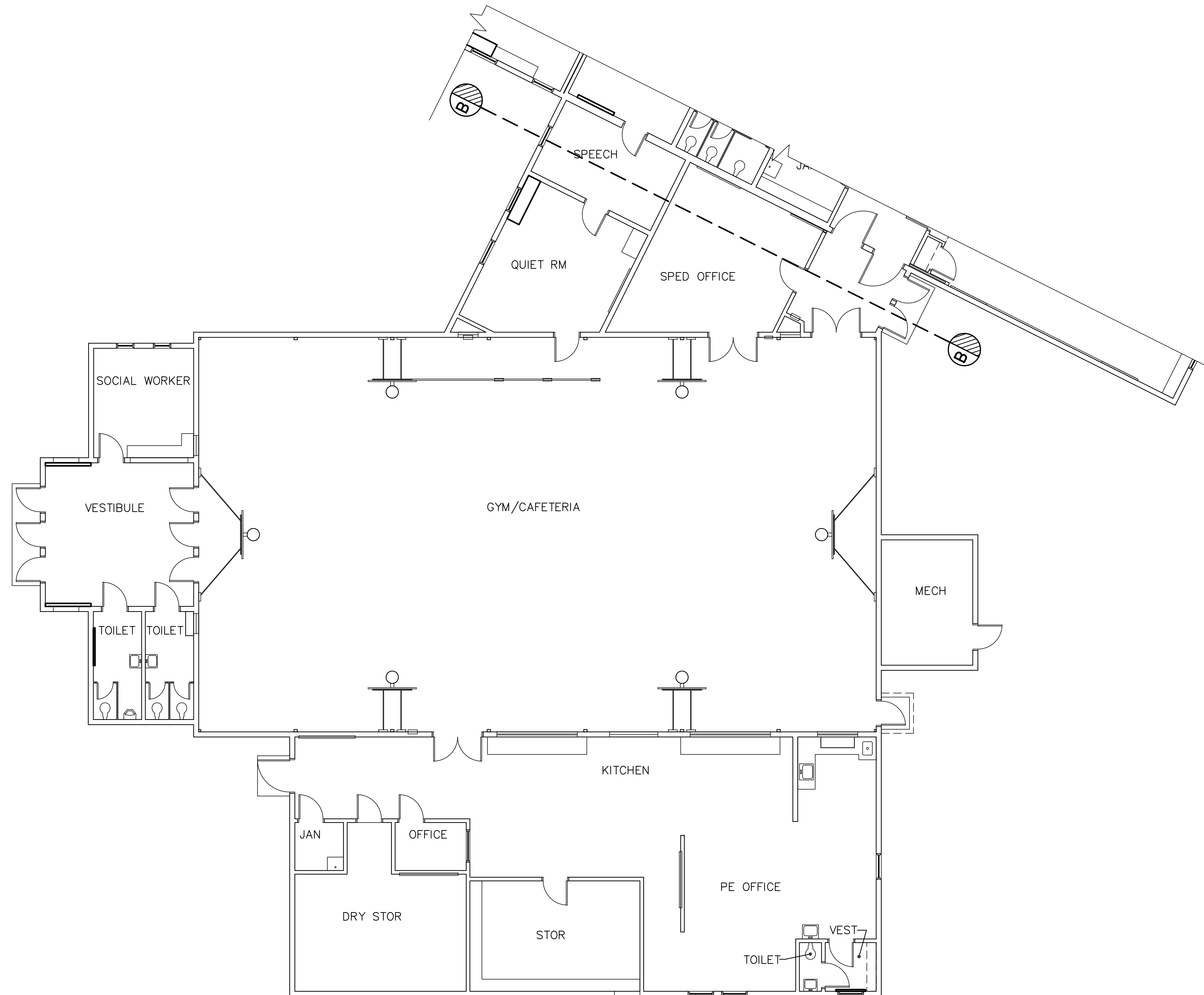
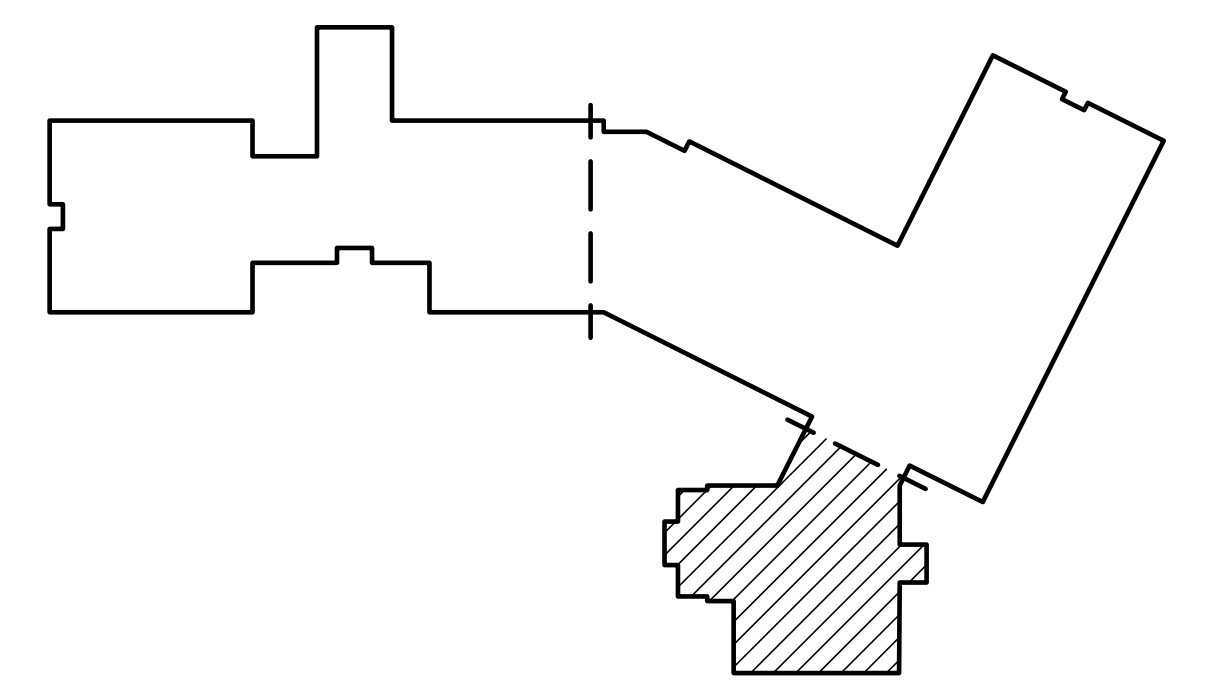


**DRAWING NOTE**

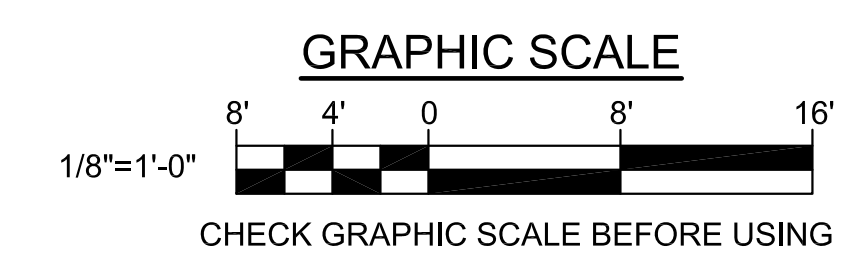
- BUILDING SHALL REMAIN FULLY OPERATIONAL DURING PHASE 1 AND 2 OF THE PROJECT. REMOVE BUILDING DURING PHASE 3 OF PROJECT.



**1 FLOOR PART PLAN - REMOVALS**  
ED103 SCALE: 1/8"=1'-0"



**KEY PLAN:**  
PLAN NORTH



		<b>STATE OF MAINE PUBLIC SCHOOL PROJECT</b>	
		TITLE: PORTLAND PUBLIC SCHOOLS NEW FRED P. HALL ELEMENTARY SCHOOL LOCATION: 53 OROND ROAD, PORTLAND, ME	
TITLE THIS DWG: <b>FIRST FLOOR PART PLAN REMOVAL</b>		DRAWING NO. <b>ED103</b>	
DRAWN BY: BPD CHECKED BY: DCL		SHEET NO. <b>285</b> OF <b>312</b>	
NO.	DATE	DESCRIPTION	BY
REVISIONS			
DATE: 03/17/17		231 Main Street, Biddeford, Maine 04005 207.283.2193	