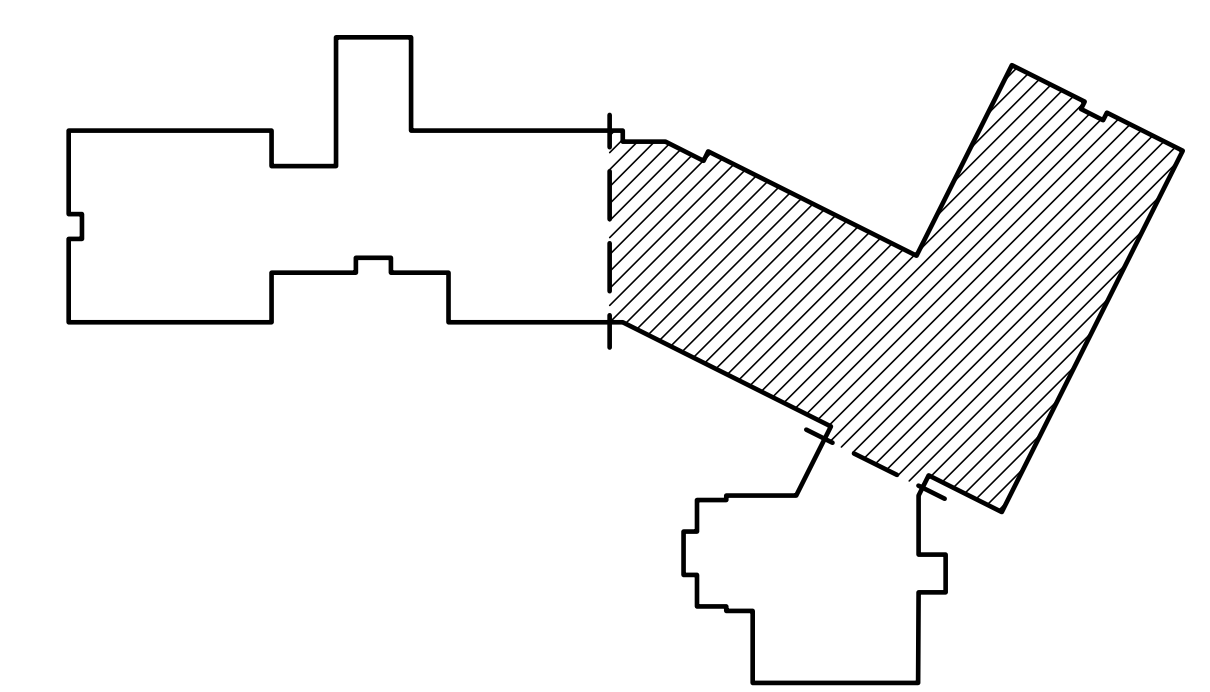


DRAWING NOTE

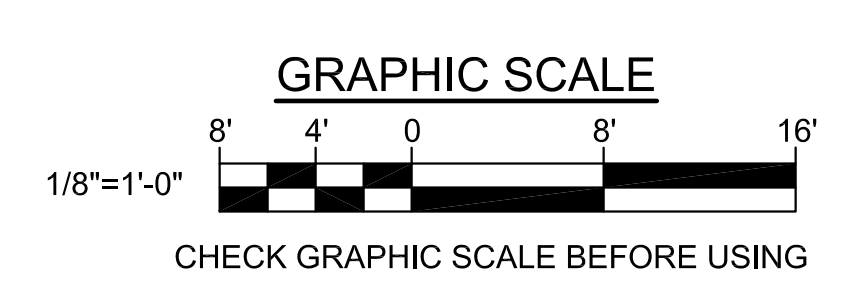
- REMOVE ELECTRICAL DEVICES AND ASSOCIATED WIRING AND CONDUIT DURING PHASE 1. THE REMAINDER OF THE BUILDING SHALL REMAIN FULLY OPERATIONAL DURING PHASES 1 AND 2. REMOVE REMAINDER OF BUILDING IN PHASE 3.



1 FLOOR PART PLAN - REMOVALS
ED102 SCALE: 1/8"=1'-0"



KEY PLAN:
PLAN NORTH



		STATE OF MAINE PUBLIC SCHOOL PROJECT	
		TITLE: PORTLAND PUBLIC SCHOOLS NEW FRED P. HALL ELEMENTARY SCHOOL LOCATION: 53 GROND ROAD, PORTLAND, ME	
TITLE THIS DWG: FIRST FLOOR PART PLAN REMOVAL		OAK POINT ASSOCIATES	
DRAWN BY: BPD CHECKED BY: DCL		DRAWING NO. ED102 SHEET NO. 284 OF 312	
NO.	DATE	DESCRIPTION	BY
		REVISIONS	
DATE: 03/17/17		231 Main Street, Biddeford, Maine 04005 207.283.2193	