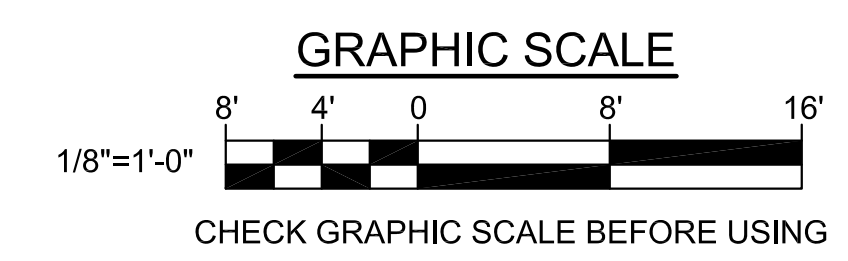
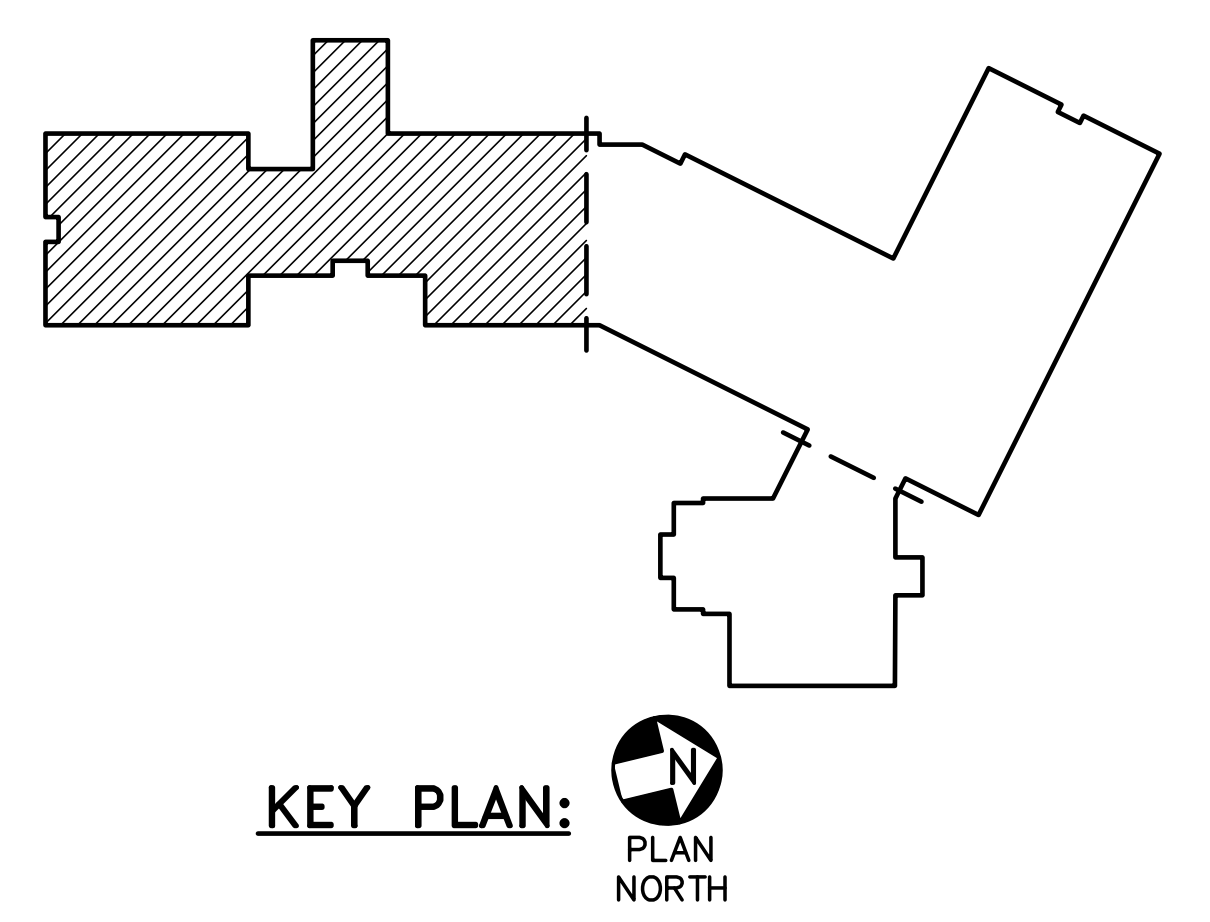


**1 FLOOR PART PLAN - REMOVALS**  
ED101 SCALE: 1/8"=1'-0"

**DRAWING NOTE**  
1. BUILDING SHALL REMAIN FULLY OPERATIONAL DURING PHASE 1 AND 2 OF THE PROJECT. REMOVE BUILDING DURING PHASE 3 OF PROJECT.



		<b>STATE OF MAINE</b> <b>PUBLIC SCHOOL PROJECT</b>	
		TITLE: PORTLAND PUBLIC SCHOOLS NEW FRED P. HALL ELEMENTARY SCHOOL LOCATION: 23 OROND ROAD, PORTLAND, ME TITLE THIS DWG: <b>FIRST FLOOR PART PLAN REMOVAL</b>	
DRAWN BY: BPD CHECKED BY: DCL		<b>OAK POINT ASSOCIATES</b> 231 Main Street, Biddeford, Maine 04009 207.283.2193	
NO.	DATE	DESCRIPTION	BY
		REVISIONS	
DATE: 03/17/17		DRAWING NO. <b>ED101</b>	
		SHEET NO. <b>283</b> OF <b>312</b>	