

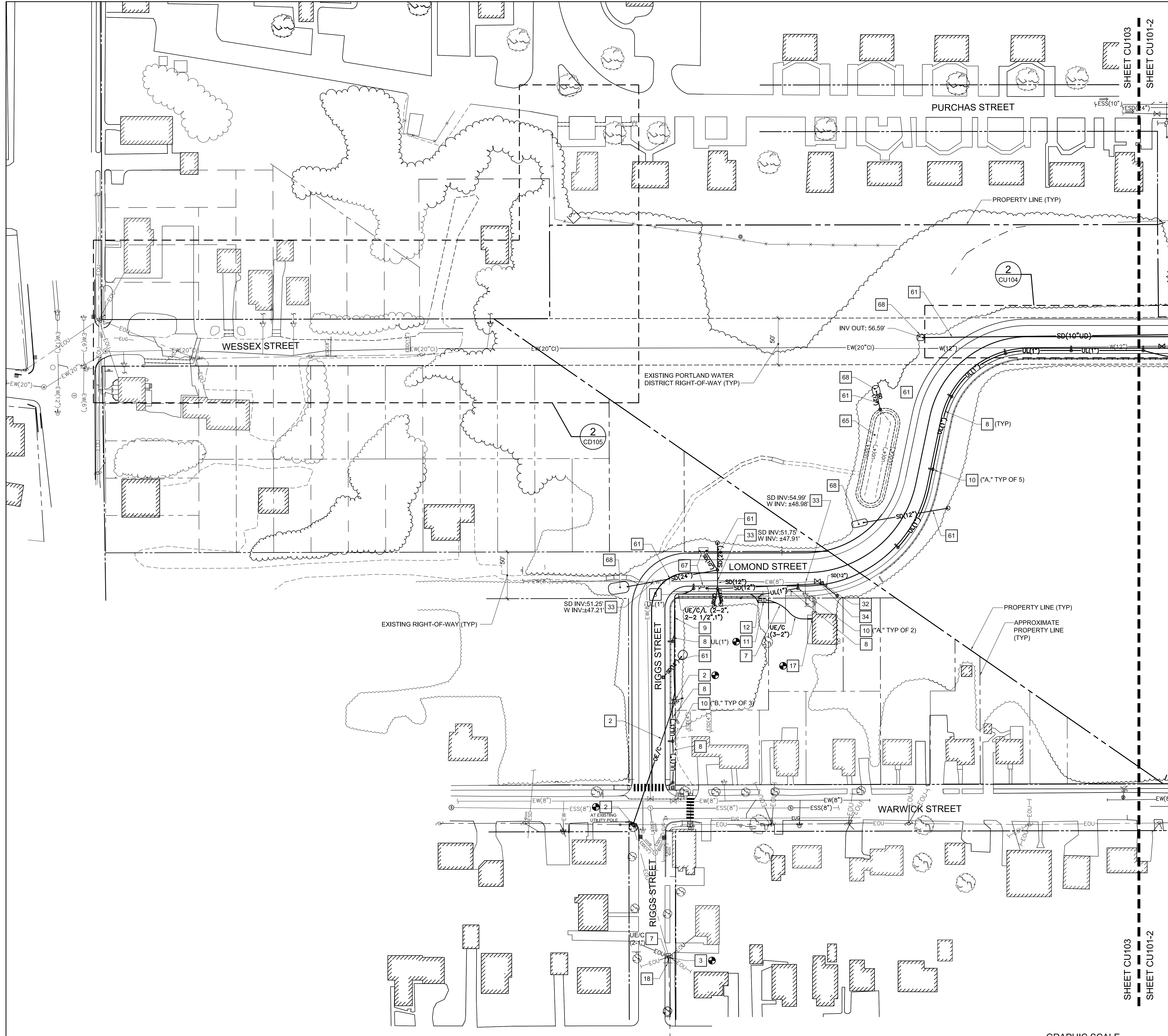
KEYNOTES: (THIS SHEET ONLY.)

- ELECTRIC/COMMUNICATIONS**
- 1 NOT USED THIS SHEET.
 - 2 UTILITY POLE (BY CMP), CONNECTIONS FOR OVERHEAD ELECTRIC/COMMUNICATIONS WIRES BY CMP, FAIRPOINT COMMUNICATIONS AND SPECTRUM INCLUDED BY ALLOWANCE, COORDINATE INSTALLATION WITH UTILITY PROVIDERS, SEE NOTIFICATION NOTES, SHEET C-001
 - 3 MULTIPLE CONDUIT RISERS ON UTILITY POLE WITH STANDARD CMP STANDOFF BRACKETS IN ACCORDANCE WITH ILLUSTRATION NO. 28 OF THE CMP "HANDBOOK OF STANDARD REQUIREMENTS FOR ELECTRIC SERVICE AND METER INSTALLATIONS." PROVIDE ALL MATERIALS AND INSTALL FIRST SECTION TO ± 6" ABOVE GRADE (REMAINING INSTALLATION AND CONNECTIONS PERFORMED BY CMP).
 - 4 - 6 NOT USED THIS SHEET.
 - 7 UNDERGROUND ELECTRIC (SECONDARY) COMMUNICATIONS LINE IN CONDUIT TRENCH. COORDINATE INSTALLATION OF COMMUNICATIONS WIRING WITH FAIRPOINT AND SPECTRUM, SEE COORDINATION NOTES, SHEET C-001. SEE DETAIL 2/C-508
 - 8 UNDERGROUND LIGHTING LINE IN CONDUIT TRENCH. SEE DETAIL 2/C-508.
 - 9 PRIMARY ELECTRIC, LIGHTING AND COMMUNICATIONS CONDUITS IN COMBINATION CONDUIT TRENCH (PRIMARY ELECTRIC AND COMMUNICATIONS WIRING BY CMP, FAIRPOINT AND SPECTRUM), COORDINATE INSTALLATION WITH UTILITY PROVIDERS, SEE NOTIFICATION NOTES, SHEET C-001. SEE DETAIL 7/C-508.
 - 10 LIGHT POLE ON PRECAST CONCRETE BASE (TYPE INDICATED WITH KEYNOTE). SEE DETAIL 6/C-505.
 - 11 TRANSFORMER PAD. SEE DETAIL 8/C-508.
 - 12 LIGHTING CONTROL CABINET ON CONCRETE PAD. SEE SHEET ES101 AND DETAIL 8/C-508.
 - 13 - 15 NOT USED THIS SHEET.
 - 16 CONNECT LIGHTPOLE TO ELECTRICAL CONNECTION ON UTILITY POLE INCLUDED BY ALLOWANCE. COORDINATE INSTALLATION WITH CMP. SEE NOTIFICATION NOTES, SHEET C-001.
 - 17 MULTIPLE CONDUIT RISERS ON HOUSE IN ACCORDANCE WITH ILLUSTRATION NO. 10 OF THE CMP "HANDBOOK OF STANDARD REQUIREMENTS FOR ELECTRIC SERVICE AND METER INSTALLATIONS." PROVIDE ALL MATERIALS AND INSTALL METER LOCATION, ± 5' ABOVE GRADE (REMAINING INSTALLATION AND CONNECTIONS PERFORMED BY CMP).
 - 18 CONNECT WIRING FROM UTILITY TO SCHOOL ZONE BEACON IN ACCORDANCE WITH MANUFACTURER'S WRITTEN RECOMMENDATIONS.

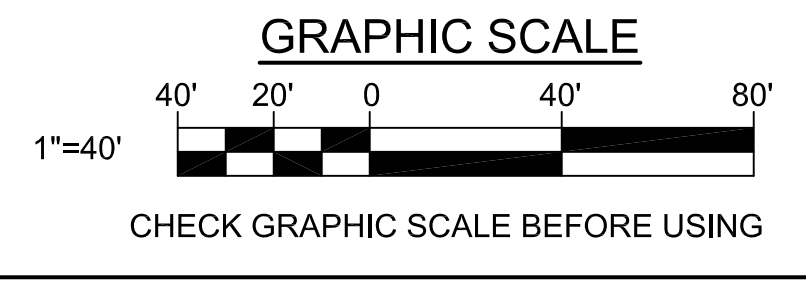
- WATER**
- 19 NOT USED THIS SHEET.
 - 20 - 31 NOT USED THIS SHEET.
 - 32 PROVIDE 1' SEPERATION BETWEEN WATER MAIN AND CATCH BASINS.
 - 33 PROVIDE 6" MINIMUM SEPERATION AT STORMDRAIN/WATER LINE CROSSING. INVERT ELEVATIONS INDICATED WITH KEYNOTE.
 - 34 ADJUST VALVE BOX TO MEET FINISH GRADES INDICATED ON CG102.
 - 35 - 49 NOT USED THIS SHEET.

- STORM DRAINAGE (SEE ALSO CG102)**
- 50 - 60 NOT USED THIS SHEET.
 - 61 STORM DRAIN LINE IN PIPE TRENCH (PROVIDE PERFORATED PIPE WHERE LINE IS INDICATED WITH "UD". SEE DETAIL 1/C-507.
 - 62 - 64 NOT USED THIS SHEET.
 - 65 STORMWATER TREATMENT AREA (GRASSED UNDERDRAINED SOIL FILTER). SEE SHEETS CU101, CG102 AND DETAIL 1/C-510.
 - 66 NOT USED THIS SHEET.
 - 67 STORMWATER TREATMENT AREA (TREE BOX FILTER). SEE TREATMENT AREA SCHEDULE, SHEET CG102 AND DETAIL 3/C-509.
 - 68 PIPE OUTLET PROTECTION. SEE DETAIL 9/C-502.
BOTTOM WIDTH = 4' (OVERALL WIDTH = 7')
BOTTOM LENGTH = 4' (OVERALL LENGTH = 8')
D₅₀ = 5"

- NOTES:**
1. SEE SHEET CG101 FOR STORM DRAINAGE INFORMATION.
 2. SEE SHEET CU104 FOR ADDITIONAL WORK ASSOCIATED WITH WATER MAIN INSTALLATION.



1 SOUTH UTILITY PLAN-PHASE 1
CU103 SCALE: 1"=40'



		STATE OF MAINE PUBLIC SCHOOL PROJECT	
		TITLE: NEW FRED P. HALL ELEMENTARY SCHOOL LOCATION: 23 ORONO ROAD, PORTLAND, ME TITLE THIS DATE: SOUTH UTILITY PLAN-PHASE 1	
DRAWN BY: JSD CHECKED BY: JLG		DRAWING NO.: CU103 SHEET NO.: 40 OF 312	
NO.	DATE	DESCRIPTION	BY
REVISIONS		DATE: 03/17/17	