

KEYNOTES: (THIS SHEET ONLY.)

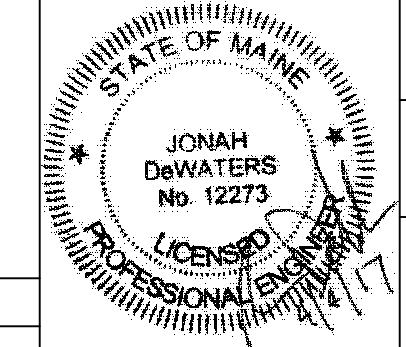

- 1 - 9 NOT USED THIS SHEET.
- 10 ASPHALT CONCRETE PAVEMENT. SEE DETAIL 1/C-503.
- 11 - 13 NOT USED THIS SHEET.
- 14 VERTICAL CONCRETE CURB WITH 7" REVEAL. SEE DETAIL 10/C-503.
- 15 VERTICAL GRANITE CURB WITH 7" REVEAL. SEE DETAIL 12/C-503.
- 16 TIPDOWN GRANITE CURB (7' LONG). SEE DETAIL 10/C-503 (SIM).
- 17 ASPHALT CONCRETE SIDEWALK. SEE DETAIL 5/C-503.
- 18 - 20 NOT USED THIS SHEET.
- 21 STORM WATER TREATMENT AREA: GRASSED UNDERDRAINED SOIL FILTER. SEE SHEET CG102 AND DETAIL 1/C-510.
- 22 - 23 NOT USED THIS SHEET.
- 24 TURFGRASS-6" PLANTING SOIL. SEED (GENERAL LAWN SEED MIX), FERTILIZER AND MULCH ALL DISTURBED AREAS UNLESS INDICATED OTHERWISE. SEE SHEET LS102 FOR EXTENT OF SEEDING/SODDING.
- 25 MEADOW-6" PLANTING SOIL. SEED (RESTORATION AREA SEED MIX), FERTILIZER AND MULCH. SEE SHEET LS102 FOR EXTENT OF SEEDING/SODDING.
- 26 ACCESSIBLE CURB CUT (TYPE AS INDICATED). SEE DETAIL 1/C-504.
- 27 - 31 NOT USED THIS SHEET.
- 32 LIGHTING CONTROL CABINET ON CONCRETE PAD. SEE ES101 AND DETAIL 3/C-505.
- 33 SINGLE PHASE TRANSFORMER PAD. SEE DETAIL 8/C-508.
- 34 - 44 NOT USED THIS SHEET.
- 45 WALKING TRAIL. SEE DETAIL 3/C-503.
- 46 NOT USED THIS SHEET.
- 47 POSSIBLE SNOW STORAGE AREA.
- 48 - 53 NOT USED THIS SHEET.
- 54 WOOD GUARD RAIL. SEE DETAIL 2/C-504.
- 55 DETECTABLE WARNING PANEL. SEE DETAIL 9/C-503.
- 56 SURVEY MARKER POST. ENGAGE A PROFESSIONAL LAND SURVEYOR TO ESTABLISH VERTICAL AND HORIZONTAL POSITION OF MARKER ON CITY OF PORTLAND DATUM (VERTICAL AND HORIZONTAL). PROVIDE CERTIFIED (STAMPED) PLANS OF LOCATION TO ARCHITECT AND CITY OF PORTLAND. SEE DETAIL 9/C-504.
- 57 ENGAGE A PROFESSIONAL LAND SURVEYOR TO RESET EXISTING DAMAGED PROPERTY MARKER.
- 58 STORM WATER TREATMENT AREA: TREE BOX FILTER. SEE SHEET CG102 AND DETAIL 3/C-509.
- 59 PIPE INLET PROTECTION. SEE SHEET CG102. SEE DETAIL 9/C-502 (SIM).
- 60 PIPE OUTLET PROTECTION. SEE SHEET CG102. SEE DETAIL 9/C-502.
- 61 REINSTALL EXISTING 1" x 6" DECKING.
- 62 6" THICK PLANTING SOIL AND 3" SHREDDED BARK MULCH.

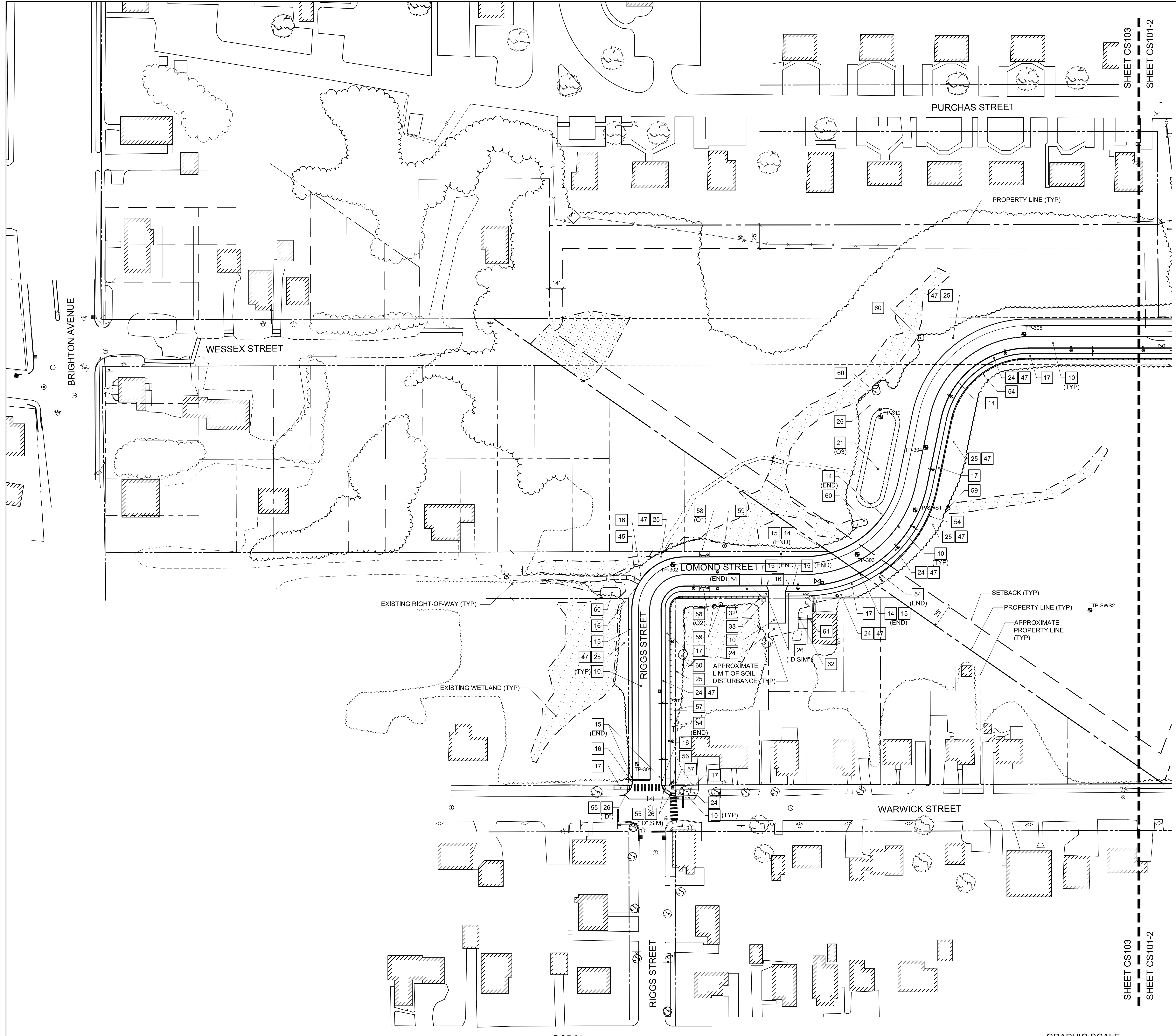
STREET ACCEPTANCE NOTE:

1. PROVIDE ADDITIONAL GRANITE SURVEY MONUMENTS AS REQUIRED FOR ACCEPTANCE OF LOMOND STREET BY CITY OF PORTLAND (SEE STREET ACCEPTANCE NOTES, SHEET C-001). BASE BIDS ON PROVIDING FOUR ADDITIONAL MARKERS AS (NUMBER AND LOCATION TO BE DETERMINED BY CITY OF PORTLAND AND LAND SURVEYOR ENGAGED TO PERFORM AS-BUILT SURVEY). SEE DETAIL 9/C-504

NOTES:

1. SEE SHEET CL102 FOR LAYOUT INFORMATION.
2. SEE SHEET CM101 FOR PAVEMENT MARKING AND SIGNAGE INFORMATION.
3. SEE SHEET CU103 FOR STREET LIGHT AND OTHER UTILITY INFORMATION.

		STATE OF MAINE PUBLIC SCHOOL PROJECT	
		TITLE: NEW FRED P. HALL ELEMENTARY SCHOOL LOCATION: 23 ORONO ROAD, PORTLAND, ME TITLE THIS DATE: SOUTH SITE PLAN-PHASE 1	
DRAWN BY: JSD	CHECKED BY: JLG		
1 04/04/17 ADDENDUM 1	JSD	CS103	
NO. DATE DESCRIPTION BY NO.	NO.	231 Main Street, Skiddeau, Maine 04095 207.253.0190	
REVISIONS		DATE: 03/17/17	



1 SOUTH SITE PLAN-PHASE 1
SCALE: 1"=40'

