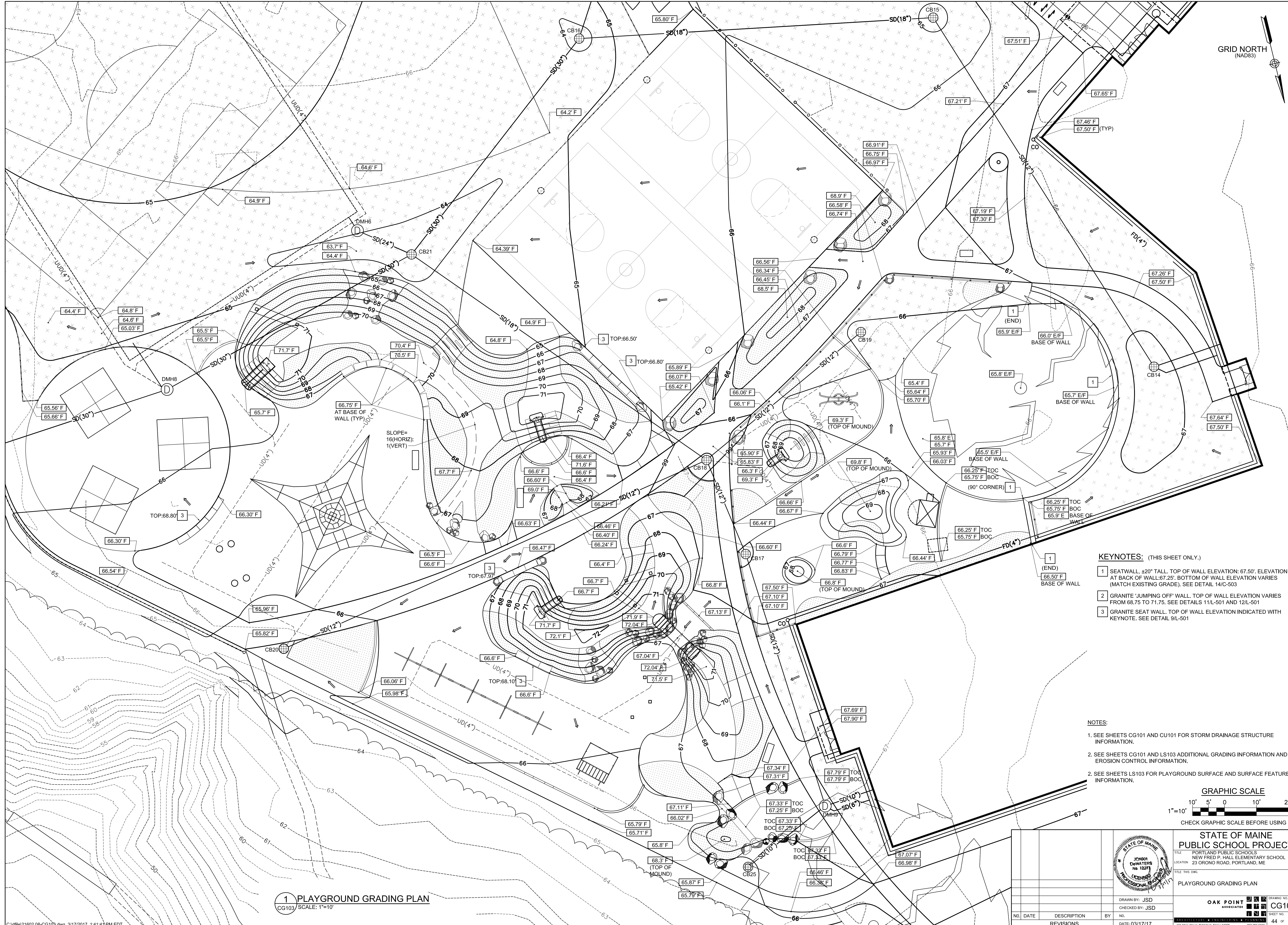
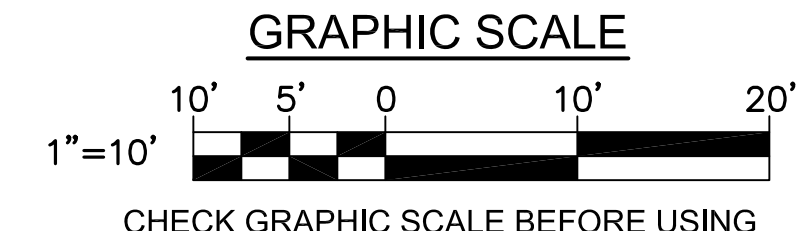


GRID NORTH
(NAD83)



- KEYNOTES: (THIS SHEET ONLY.)**
- 1 SEATWALL, ±20" TALL. TOP OF WALL ELEVATION: 67.50'. ELEVATION AT BACK OF WALL: 67.25'. BOTTOM OF WALL ELEVATION VARIES (MATCH EXISTING GRADE). SEE DETAIL 14/C-503
 - 2 GRANITE 'JUMPING OFF' WALL. TOP OF WALL ELEVATION VARIES FROM 68.75 TO 71.75. SEE DETAILS 11/L-501 AND 12/L-501
 - 3 GRANITE SEAT WALL. TOP OF WALL ELEVATION INDICATED WITH KEYNOTE. SEE DETAIL 9/L-501

- NOTES:**
- 1. SEE SHEETS CG101 AND CU101 FOR STORM DRAINAGE STRUCTURE INFORMATION.
 - 2. SEE SHEETS CG101 AND LS103 ADDITIONAL GRADING INFORMATION AND EROSION CONTROL INFORMATION.
 - 2. SEE SHEETS LS103 FOR PLAYGROUND SURFACE AND SURFACE FEATURE INFORMATION.



1 PLAYGROUND GRADING PLAN
CG103 SCALE: 1"=10'

	STATE OF MAINE PUBLIC SCHOOL PROJECT	
	TITLE: NEW FRED P. HALL ELEMENTARY SCHOOL LOCATION: 23 ORONO ROAD, PORTLAND, ME TITLE THIS DWG: PLAYGROUND GRADING PLAN	
DRAWN BY: JSD CHECKED BY: JSD	NO. DATE DESCRIPTION BY NO. DATE	DRAWING NO. CG103 SHEET NO. 44 OF 312