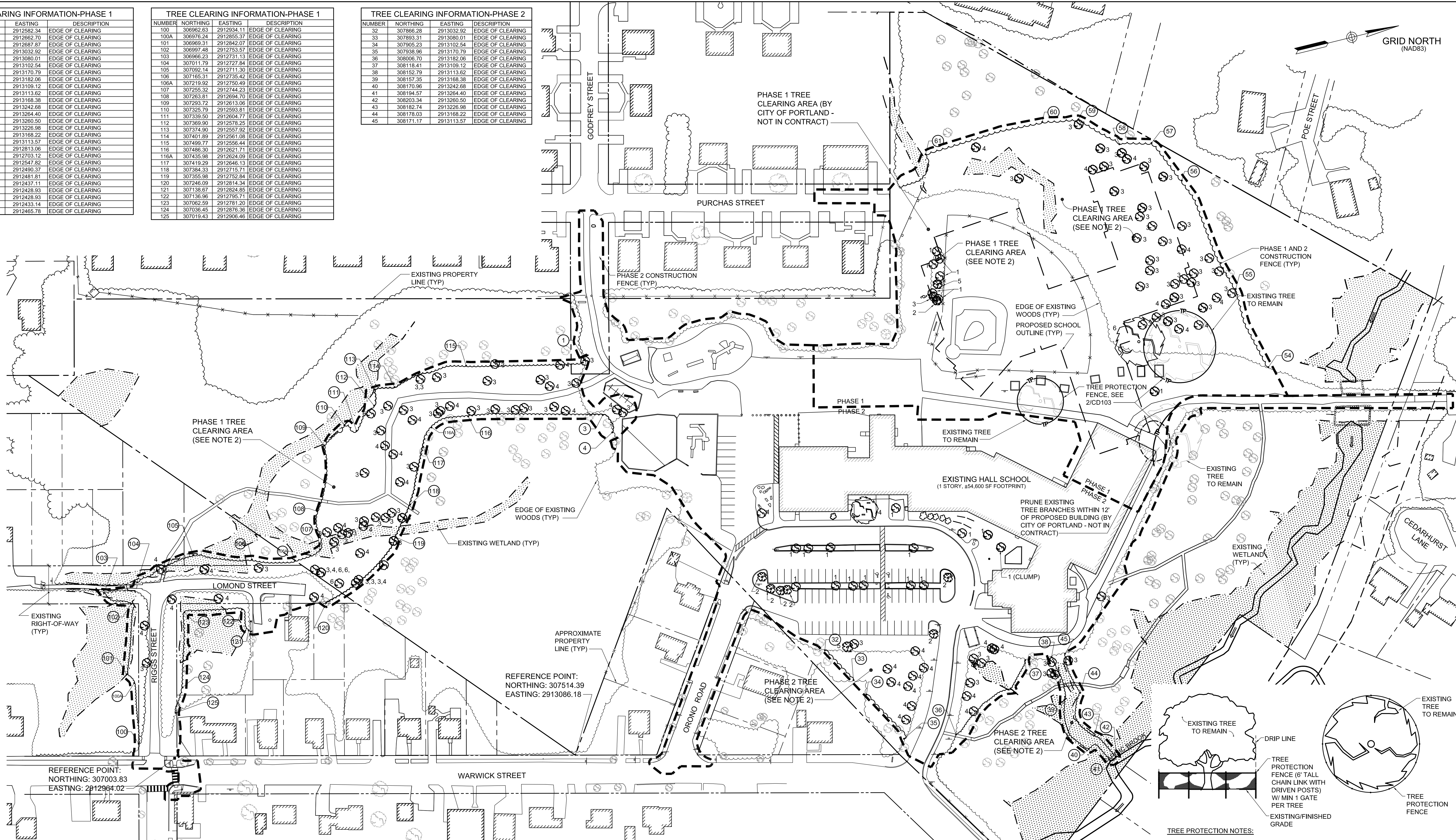


TREE CLEARING INFORMATION-PHASE 1			
NUMBER	NORTHING	EASTING	DESCRIPTION
1	307652.02	2912582.34	EDGE OF CLEARING
3	307658.18	2912662.70	EDGE OF CLEARING
4	307654.54	2912687.87	EDGE OF CLEARING
32	307866.28	2913032.92	EDGE OF CLEARING
33	307893.31	2913080.01	EDGE OF CLEARING
34	307905.23	2913102.54	EDGE OF CLEARING
35	307938.96	2913170.79	EDGE OF CLEARING
36	308006.70	2913182.06	EDGE OF CLEARING
37	308118.41	2913109.12	EDGE OF CLEARING
38	308152.79	2913113.62	EDGE OF CLEARING
39	308157.35	2913168.38	EDGE OF CLEARING
40	308170.96	2913242.68	EDGE OF CLEARING
41	308194.57	2913264.40	EDGE OF CLEARING
42	308203.34	2913260.50	EDGE OF CLEARING
43	308182.74	2913226.98	EDGE OF CLEARING
44	308178.03	2913168.22	EDGE OF CLEARING
45	308171.17	2913113.57	EDGE OF CLEARING
54	308521.15	2912813.06	EDGE OF CLEARING
55	308504.34	2912703.12	EDGE OF CLEARING
56	308470.11	2912547.82	EDGE OF CLEARING
57	308443.52	2912490.37	EDGE OF CLEARING
58	308402.15	2912481.81	EDGE OF CLEARING
59	308357.81	2912437.11	EDGE OF CLEARING
60	308311.00	2912428.93	EDGE OF CLEARING
61	308152.09	2912433.14	EDGE OF CLEARING
62	308108.22	2912465.78	EDGE OF CLEARING

TREE CLEARING INFORMATION-PHASE 1			
NUMBER	NORTHING	EASTING	DESCRIPTION
100	308962.63	2912934.11	EDGE OF CLEARING
100A	308976.24	2912855.37	EDGE OF CLEARING
101	308960.31	2912842.07	EDGE OF CLEARING
102	308997.48	2912753.57	EDGE OF CLEARING
103	308966.23	2912731.13	EDGE OF CLEARING
104	307011.79	2912727.84	EDGE OF CLEARING
105	307092.14	2912711.30	EDGE OF CLEARING
106	307165.31	2912735.42	EDGE OF CLEARING
106A	307219.92	2912750.49	EDGE OF CLEARING
107	307255.32	2912744.23	EDGE OF CLEARING
108	307263.81	2912694.70	EDGE OF CLEARING
109	307293.72	2912613.08	EDGE OF CLEARING
110	307325.79	2912593.81	EDGE OF CLEARING
111	307339.50	2912604.77	EDGE OF CLEARING
112	307369.90	2912578.25	EDGE OF CLEARING
113	307374.90	2912557.92	EDGE OF CLEARING
114	307401.89	2912561.08	EDGE OF CLEARING
115	307499.77	2912566.44	EDGE OF CLEARING
116	307486.30	2912621.71	EDGE OF CLEARING
116A	307435.98	2912624.09	EDGE OF CLEARING
117	307419.29	2912646.13	EDGE OF CLEARING
118	307384.33	2912715.71	EDGE OF CLEARING
119	307355.98	2912752.84	EDGE OF CLEARING
120	307246.09	2912814.34	EDGE OF CLEARING
121	307136.87	2912824.85	EDGE OF CLEARING
122	307136.96	2912795.71	EDGE OF CLEARING
123	307062.59	2912781.20	EDGE OF CLEARING
124	307036.45	2912876.36	EDGE OF CLEARING
125	307019.43	2912908.46	EDGE OF CLEARING

TREE CLEARING INFORMATION-PHASE 2			
NUMBER	NORTHING	EASTING	DESCRIPTION
32	307866.28	2913032.92	EDGE OF CLEARING
33	307893.31	2913080.01	EDGE OF CLEARING
34	307905.23	2913102.54	EDGE OF CLEARING
35	307938.96	2913170.79	EDGE OF CLEARING
36	308006.70	2913182.06	EDGE OF CLEARING
37	308118.41	2913109.12	EDGE OF CLEARING
38	308152.79	2913113.62	EDGE OF CLEARING
39	308157.35	2913168.38	EDGE OF CLEARING
40	308170.96	2913242.68	EDGE OF CLEARING
41	308194.57	2913264.40	EDGE OF CLEARING
42	308203.34	2913260.50	EDGE OF CLEARING
43	308182.74	2913226.98	EDGE OF CLEARING
44	308178.03	2913168.22	EDGE OF CLEARING
45	308171.17	2913113.57	EDGE OF CLEARING



**1 TREE REMOVAL AND PRESERVATION PLAN**  
CD104 SCALE: 1"=50'

**LEGEND:**

- EXISTING TREES TO REMAIN WITH GREATER THAN 16" DBH (WOODED AREAS) AND GREATER THAN 10" DBH (OPEN AREAS)
- TREES TO BE REMOVED:
  - 1 DECIDUOUS TREE, DIAMETER: LESS THAN 16"
  - 2 CONIFER, DIAMETER: LESS THAN 16"
  - 3 DECIDUOUS TREE, DIAMETER: 16" - 23"
  - 4 DECIDUOUS TREE, DIAMETER: 24" - 35"
  - 5 CONIFER, DIAMETER: 24" - 35"
  - 6 DECIDUOUS TREE, DIAMETER: GREATER THAN 36"

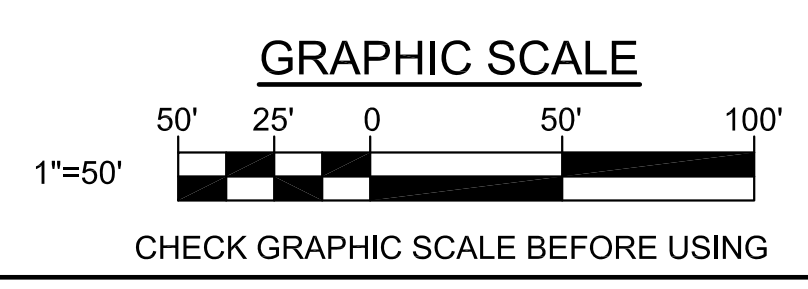
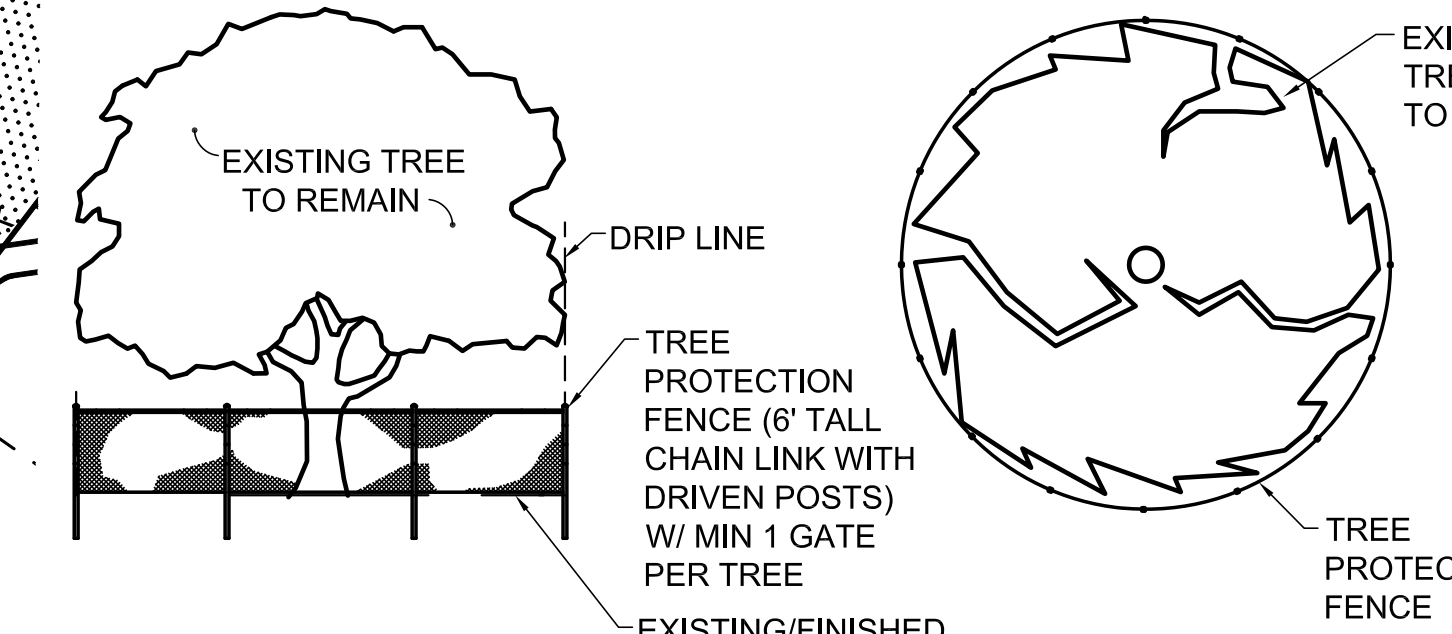
**TREE CLEARING NOTES:**

- SEE SHEETS CP101 AND CP102 FOR ADDITIONAL PHASING INFORMATION.
- TREE CLEARING RESPONSIBILITIES ARE AS FOLLOWS:
  - PHASE 1 TREE CLEARING: BY THE CITY OF PORTLAND (NOT IN CONTRACT).
  - STUMP REMOVAL FROM PHASE 1 TREE CLEARING: BY CONTRACTOR
  - PHASE 2 TREE CLEARING AND STUMP REMOVAL: BY CONTRACTOR (SEE SHEET CP102)
- PRIOR TO ANY TREE CLEARING, CONDUCT A PRE-CONSTRUCTION MEETING AT THE SITE TO DISCUSS THE TREE CLEARING REQUIREMENTS WITH THE OWNER, ARCHITECT AND THE CITY OF PORTLAND ARBORIST.
- SEQUENCE PHASE 2 TREE REMOVAL TO ENSURE TREE CLEARING IS NOT PERFORMED BETWEEN JUNE 1 AND JULY 31.
- SEE SHEETS CD101-CD103 AND CD105 FOR ADDITIONAL REMOVALS.
- PERFORM ALL TREE AND ROOT PRUNING AS DIRECTED BY A CERTIFIED ARBORIST.

**TREE PROTECTION NOTES:**

- DO NOT STORE MATERIALS OR EQUIPMENT WITHIN TREE PROTECTION ZONES.
- EXCAVATE ONLY BEYOND DRIP LINE OF TREE UNLESS INDICATED OTHERWISE ON DRAWINGS. PRUNE ROOTS IF EXPOSED.
- DIRECT VEHICLE EXHAUST AWAY FROM TREE PROTECTION ZONES.
- HAND EXCAVATE WITHIN TREE PROTECTION ZONES WHERE EXCAVATION IS INDICATED ON DRAWINGS.
- REQUIRED ROOT CUTTING AND REMOVAL OF DEAD OR DAMAGED BRANCHES SHALL BE APPROVED BY THE CITY OF PORTLAND ARBORIST PRIOR TO BEING PERFORMED. SEE NOTIFICATION NOTES, SHEET C-001.

**2 TREE PROTECTION FENCE DETAIL**  
CD104 NOT TO SCALE



CD101, CD102, CD104, CD105, CS102, CS101, CG101, LS101

STATE OF MAINE  
PUBLIC SCHOOL PROJECT  
NEW FRED P. HALL ELEMENTARY SCHOOL  
23 ORONO ROAD, PORTLAND, ME  
TREE REMOVAL AND PRESERVATION PLAN

NO.	DATE	DESCRIPTION	BY	NO.
		REVISIONS		