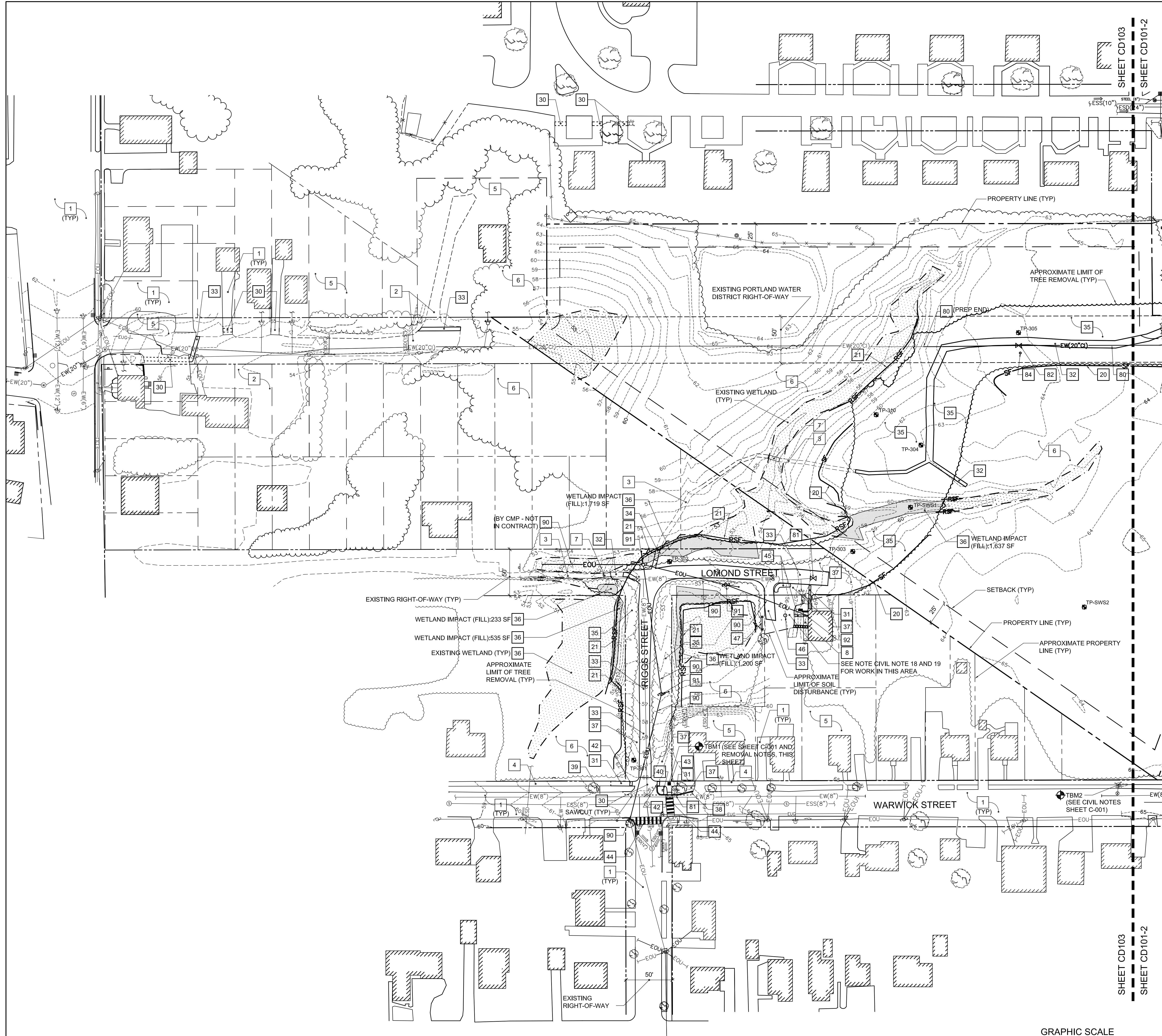


KEYNOTES: (THIS SHEET ONLY.)

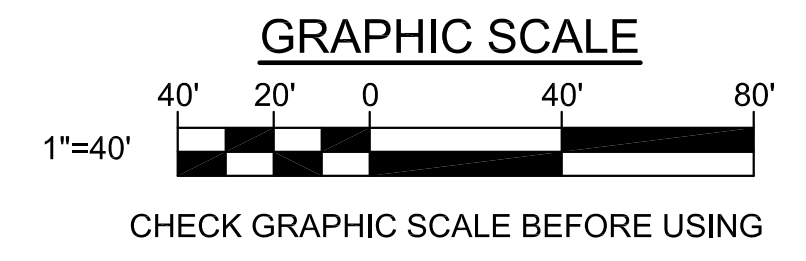
- 1 EXISTING ASPHALT CONCRETE PAVEMENT.
- 2 EXISTING GRAVEL ROAD/DRIVEWAY.
- 3 EXISTING WALKING TRAIL.
- 4 EXISTING ASPHALT CONCRETE SIDEWALK.
- 5 EXISTING TURF GRASS/MEADOW.
- 6 EXISTING WOODED AREA.
- 7 EXISTING WOODEN FOOTBRIDGE.
- 8 EXISTING WOOD DECK CONSISTING OF 1" X 6" DECKING SCREWED INTO WOODEN STRINGERS SET ON GRADE.
- 9 - 19 NOT USED THIS SHEET.
- 20 SILT FENCE. SEE DETAIL 1/C-502.
- 21 REINFORCED SILT FENCE. SEE DETAIL 2/C-502.
- 22 SEDIMENT CONTROL WATTLE. SEE DETAIL 3/C-502.
- 23 - 29 NOT USED THIS SHEET.
- 30 SAWCUT AND REMOVE EXISTING ASPHALT CONCRETE PAVEMENT, +/- 4" THICK.
- 31 SAWCUT AND REMOVE EXISTING ASPHALT CONCRETE SIDEWALK, +/- 2" THICK.
- 32 REMOVE EXISTING STONE DUST SURFACE/WALK, +/- 4" THICK.
- 33 STRIP EXISTING GRAVEL DRIVE, +/- 6" THICK.
- 34 REMOVE EXISTING WOODEN FOOTBRIDGE.
- 35 GRUB OUT STUMPS FROM PREVIOUSLY WOODED AREA (TREE CLEARING IS NOT IN CONTRACT AND PERFORMED BY CITY OF PORTLAND PRIOR TO THE START OF CONSTRUCTION). REFER TO GEOTECHNICAL REPORT IN PROJECT SPECIFICATIONS FOR REQUIRED DEPTH OF TOPSOIL/ORGANIC-CONTAINING SOIL REMOVAL.
- 36 STRIP EXISTING TOPSOIL AND ORGANIC MATERIAL AND FILL EXISTING WETLAND WITH 12" MINIMUM THICKNESS LAYER OF COMPACTED GRANULAR BORROW FOR UNDERWATER BACKFILL. THEN FILL TO SUBGRADE ELEVATION WITH GRANULAR BORROW.
- 37 STRIP AND STOCKPILE EXISTING TOPSOIL. REFER TO GEOTECHNICAL REPORT IN PROJECT SPECIFICATIONS FOR REQUIRED DEPTH OF TOPSOIL/ORGANIC-CONTAINING SOIL REMOVAL.
- 38 REMOVE EXISTING GRANITE CURB.
- 39 REMOVE EXISTING WEEDS/BRUSH FROM VICINITY OF EXISTING SIGN AND STREET TREE.
- 40 REMOVE EXISTING SIGN AND METAL SIGNPOST.
- 41 REMOVE EXISTING STREET SIGN FROM TOP OF METAL SIGN POST AND STORE FOR REINSTALLATION.
- 42 REMOVE EXISTING TACTILE WARNING PANEL SET IN CONCRETE (+/- 4" THICK).
- 43 REMOVE AND SALVAGE EXISTING SURVEY MARKER CONSISTING OF A BRASS PLUG SET IN CONCRETE INSIDE OF A CAST IRON ENCLOSURE WITH A CAST IRON COVER.
- 44 REMOVE EXISTING CROSSWALK MARKINGS USING HIGH PRESSURE WATER, SAND BLASTING, SOLVENT OR OTHER METHOD APPROVED BY THE MAINE DEPARTMENT OF TRANSPORTATION. DO NOT ALLOW MATERIAL REMOVED OR MATERIALS USED DURING THE REMOVAL PROCESS TO BE RELEASED INTO THE ENVIRONMENT.
- 45 REMOVE EXISTING MULCH PLANTING BED, ± 6" THICK.
- 46 REMOVE EXISTING TREE STUMP.
- 47 REMOVE EXISTING WOOD PICKET FENCE, ± 3" TALL.
- 48 - 79 NOT USED THIS SHEET.
- 80 CUT AND REMOVE EXISTING WATER LINE AND PROVIDE TEMPORARY WATER SERVICE AS INDICATED ON SHEETS CD105 AND CU103. COORDINATE SHUT OFF AND DISCONNECTION OF WATER LINE WITH PORTLAND WATER DISTRICT. PREP END OF WATER LINE TO REMAIN FOR CONNECTION TO PROPOSED WATER LINE. BACKFILL EXCAVATION WITH GRANULAR BORROW FOR EMBANKMENT CONSTRUCTION.
- 81 ADJUST VALVE BOX TO MEET FINISH GRADES INDICATED ON CG102
- 82 REMOVE EXISTING AIR RELEASE VALVE.
- 83 NOT USED THIS SHEET.
- 84 SALVAGE EXISTING WATER LINE MARKER POST AND DELIVER TO PORTLAND WATER DISTRICT OFFICE (225 DOUGLASS STREET, PORTLAND, ME)
- 85 - 89 NOT USED THIS SHEET.
- 90 DISCONNECT AND REMOVE EXISTING OVERHEAD ELECTRIC AND COMMUNICATION LINES. COORDINATE DISCONNECTION WITH OWNER, CMP, TIME WARNER CABLE AND FAIRPOINT COMMUNICATIONS. PROVIDE TEMPORARY POWER AND COMMUNICATIONS SERVICE TO RESIDENCE AND MINIMIZE OUTAGES. NOTIFY PROPERTY OWNERS AT LEAST 10 BUSINESS DAYS PRIOR TO ANY UTILITY DISRUPTION. SEE NOTIFICATION NOTES, SHEET C-001.
- 91 REMOVE EXISTING UTILITY POLE. COORDINATE POLE REMOVAL WITH CMP.
- 92 REMOVE EXISTING ±1" X 6" DECKING SCREWED INTO WOODEN STRINGERS SET ON GRADE AND STORE FOR REINSTALLATION. HAND DIG TRENCH AS NECESSARY FOR ELECTRIC/COMMUNICATIONS CONDUIT INSTALLATION.

REMOVAL NOTES:

1. SEE SHEET CD104 FOR ADDITIONAL TREE REMOVALS AND PRESERVATION OF EXISTING TREES TO REMAIN.
2. SEE SHEET CD104 FOR EXTENT OF TREE CLEARING (LAYOUT COORDINATES).
3. SEE SHEET CD105 FOR ADDITIONAL REMOVALS ASSOCIATED WITH WATER MAIN WORK.
4. ESTABLISH NEW TEMPORARY BENCHMARKS PRIOR TO REMOVING EXISTING PROJECT BENCHMARKS.



1 SOUTH REMOVALS SITE PLAN-PHASE 1
CD103 SCALE: 1"=40'



		STATE OF MAINE PUBLIC SCHOOL PROJECT	
		TITLE: NEW FRED P. HALL ELEMENTARY SCHOOL LOCATION: 23 ORONO ROAD, PORTLAND, ME TITLE THIS SHEET: SOUTH REMOVALS SITE PLAN-PHASE 1	
DRAWN BY: JSD CHECKED BY: JLG	DATE: 03/17/17	DRAWING NO. CD103	SHEET NO. 29 OF 312
REVISIONS		OAK POINT ASSOCIATES 231 Main Street, Skidowunk, Maine 04002 207.253.2193	