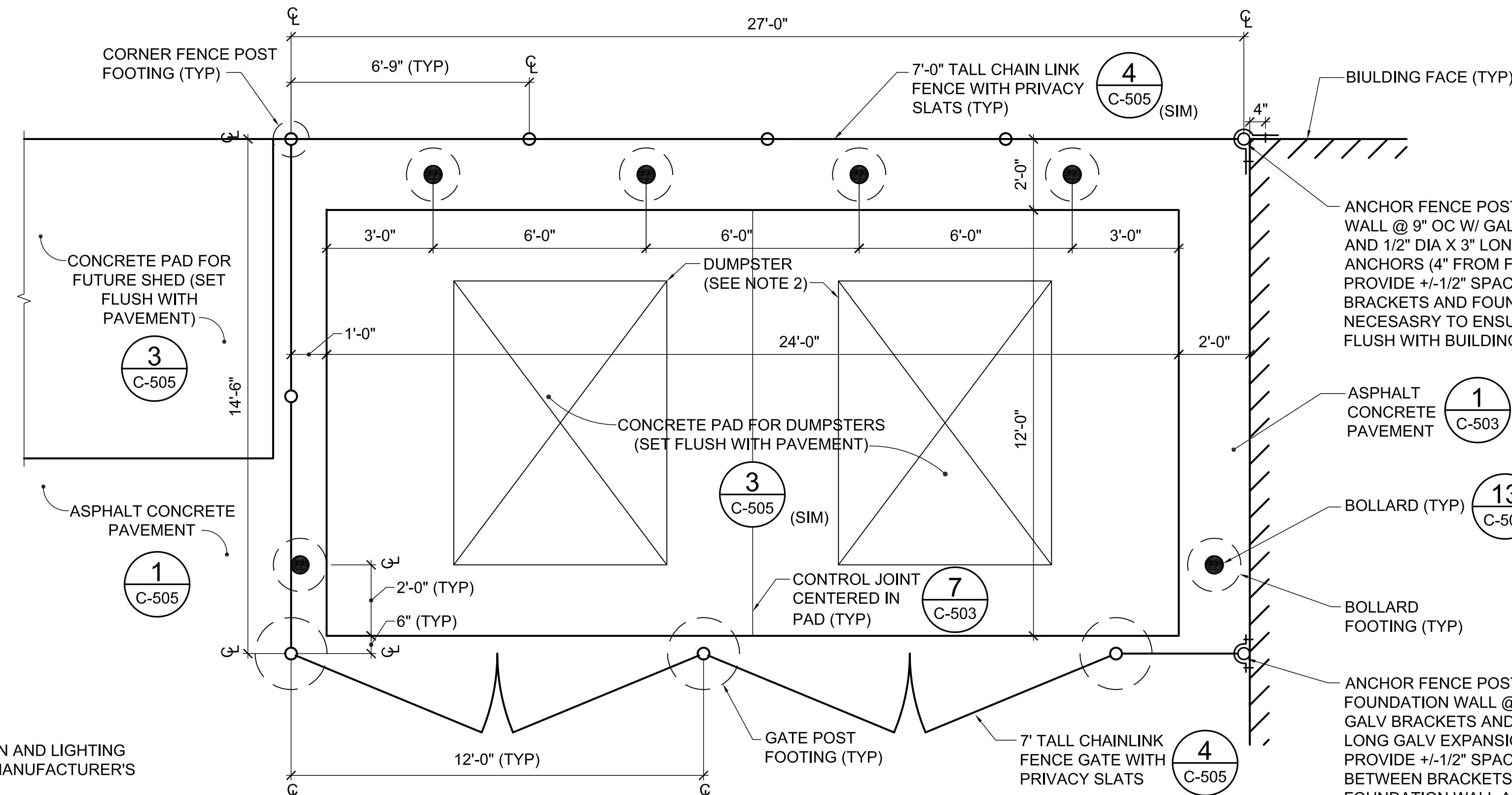


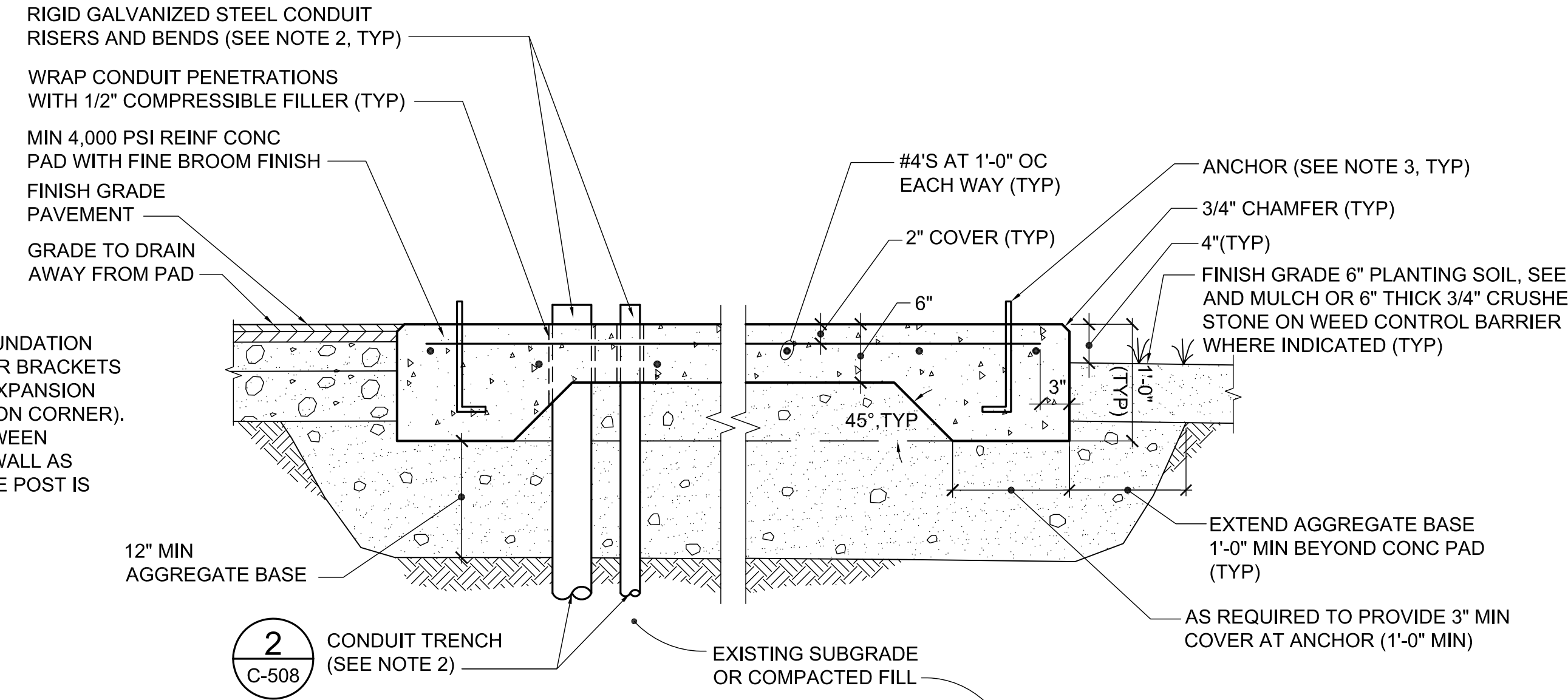
1 FLAGPOLE FOUNDATION DETAIL
C-505 NOT TO SCALE

NOTES:
1. PROVIDE FLAG POLE FOUNDATION AND LIGHTING CONDUIT IN ACCORDANCE WITH MANUFACTURER'S WRITTEN RECOMMENDATIONS.
2. DIMENSIONS INDICATED ARE APPROXIMATE. COORDINATE FINAL DIMENSIONS WITH FLAGPOLE MANUFACTURER'S WRITTEN REQUIREMENTS.



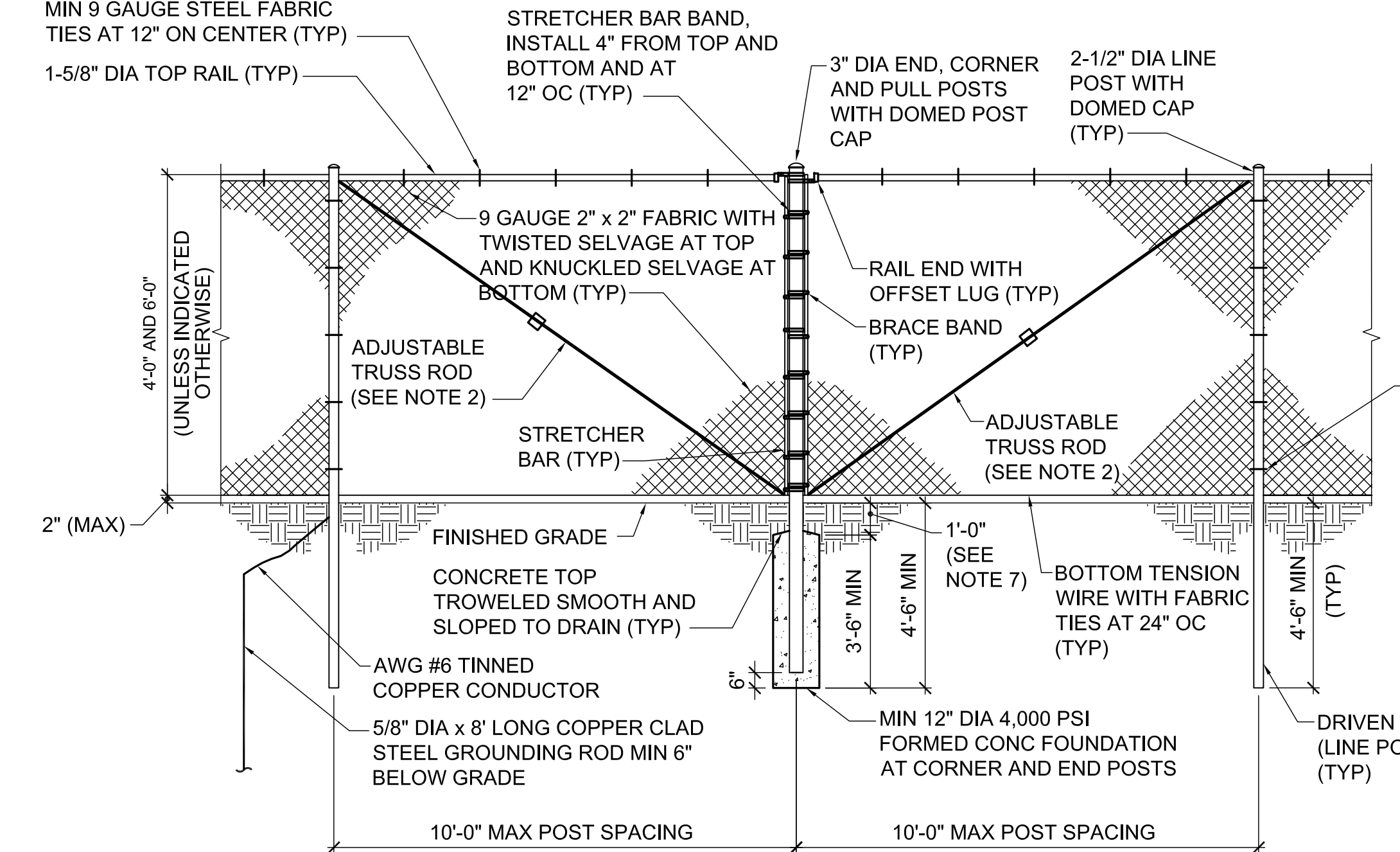
2 REINFORCED CONCRETE DUMPSTER PAD AND ENCLOSURE
C-505 NOT TO SCALE

NOTE:
1. DUMPSTER ENCLOSURE (GATE AND FENCE) SHALL BE 7' TALL CHAINLINK FENCE WITH BLACK PRIVACY SLATS DIAGONALLY WOVEN INTO FABRIC.
2. DUMPSTER PAD AND ENCLOSURE ARE BASED ON SIZES OF CURRENT DUMPSTERS BEING USED ON SITE (10-YARD) AND PROVIDE FOR 3' CLEAR ON EACH SIDE OF THE DUMPSTER (6' SEPARATION BETWEEN DUMPSTERS) AND 2' CLEAR IN FRONT OF AND BEHIND EACH DUMPSTER. DUMPSTERS SHALL BE PROVIDED BY OWNER.

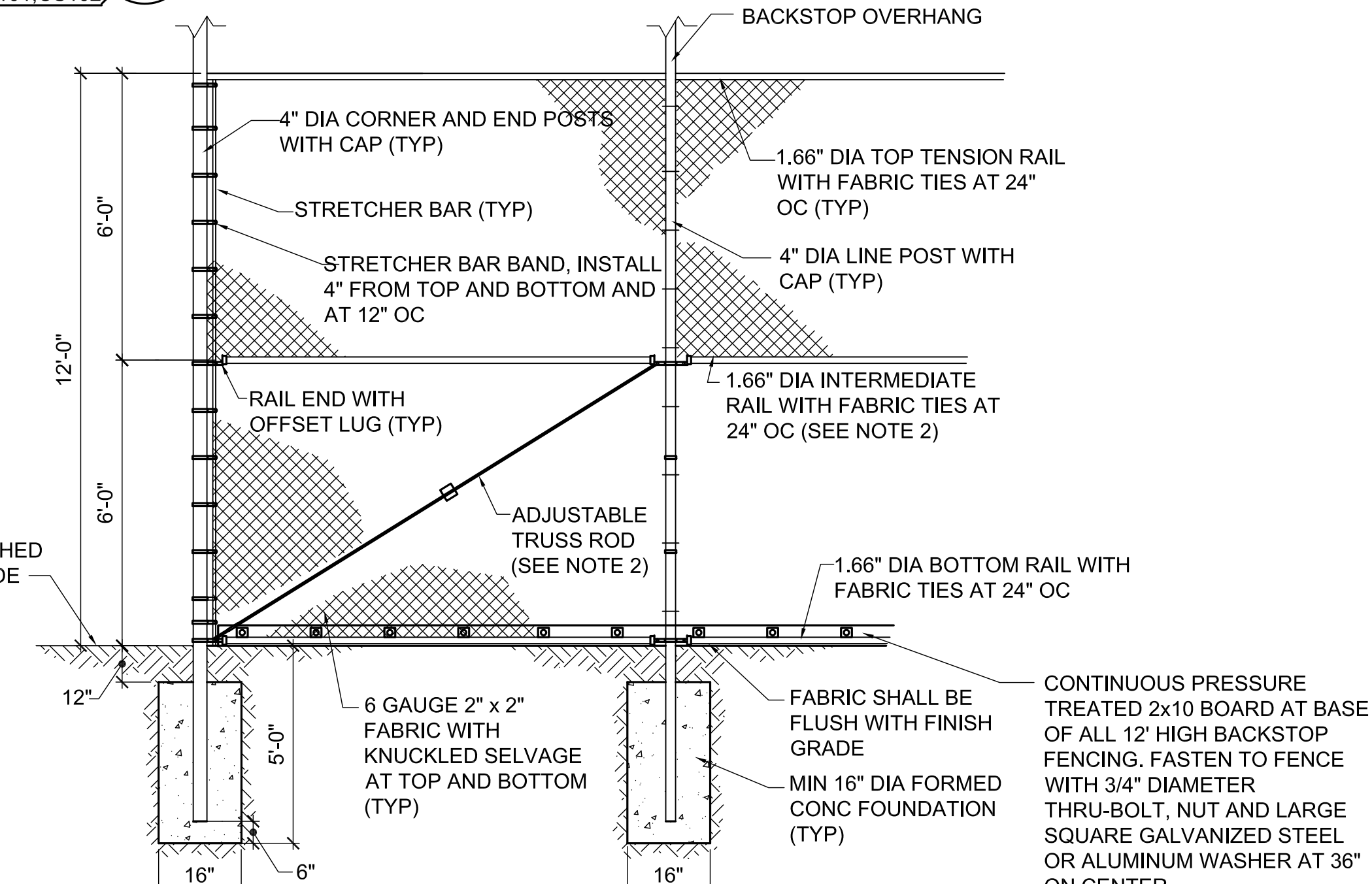


3 REINFORCED CONCRETE PAD DETAIL
C-505 NOT TO SCALE

CONCRETE PAD NOTES
1. COORDINATE EXACT PAD DIMENSIONS WITH MANUFACTURER'S WRITTEN RECOMMENDATIONS FOR EQUIPMENT SELECTED. APPROXIMATE SIZES ARE AS FOLLOWS:
a. GENERATOR PAD: 13'-3" x 6'-8"
b. DUMPSTER PAD: 24' x 12'
c. FUTURE STORAGE SHED: 9' x 9'
d. LIGHTING CONTROL CABINET: 16'-3" x 17'-3"
2. COORDINATE SLEEVE OR CONDUIT PENETRATIONS THROUGH CONCRETE PADS WITH EQUIPMENT SELECTED.
3. MOUNT/ANCHOR ALL EQUIPMENT TO PADS WITH GALVANIZED CONCRETE ANCHORS IN ACCORDANCE WITH MANUFACTURER'S/SUPPLIER'S REQUIREMENTS.
4. ALL CONDUIT BENDS AND CONDUIT PENETRATIONS THROUGH CONCRETE SLABS SHALL BE RIGID GALVANIZED STEEL.



CHAIN LINK FENCE

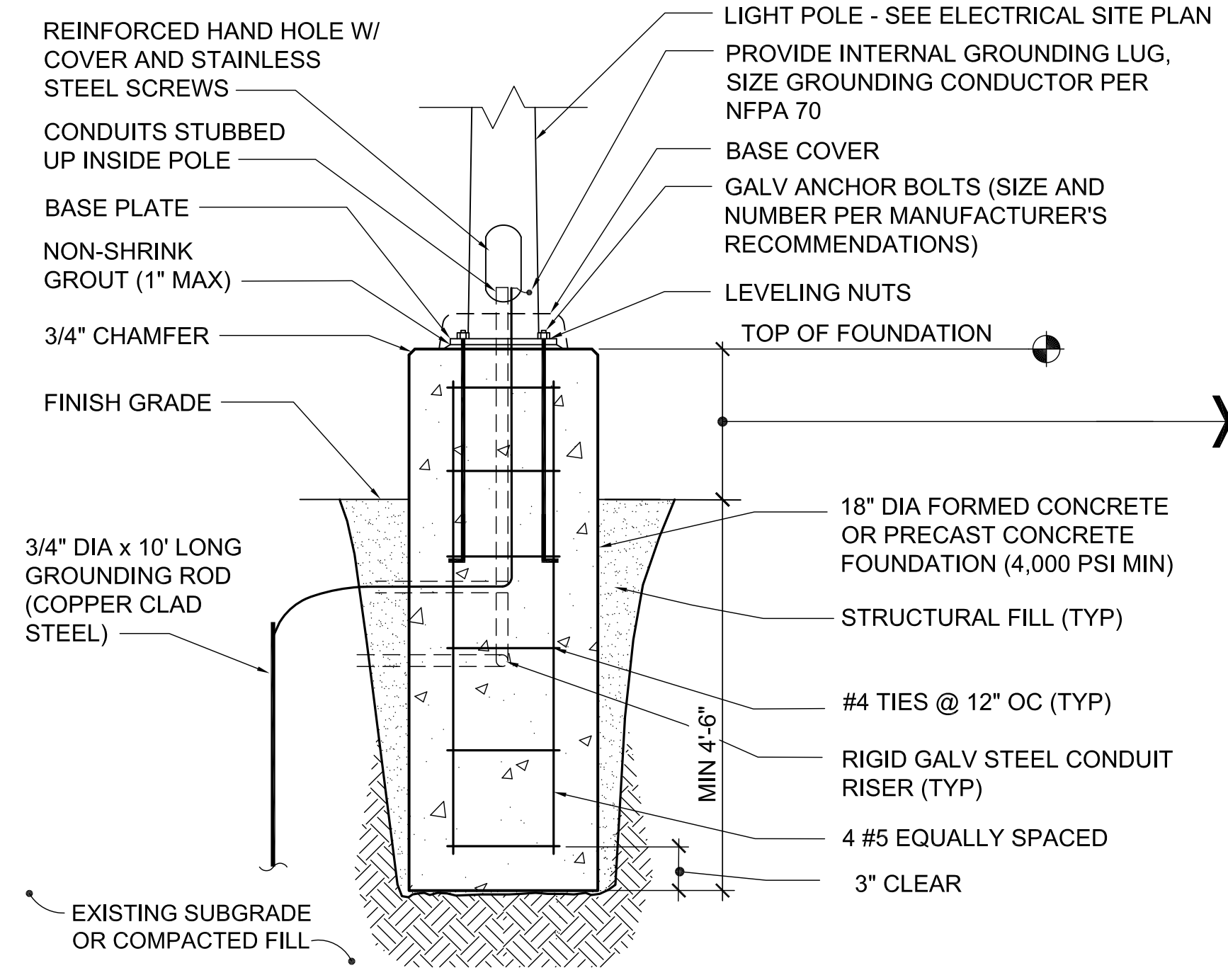


BACKSTOP ELEVATION VIEW

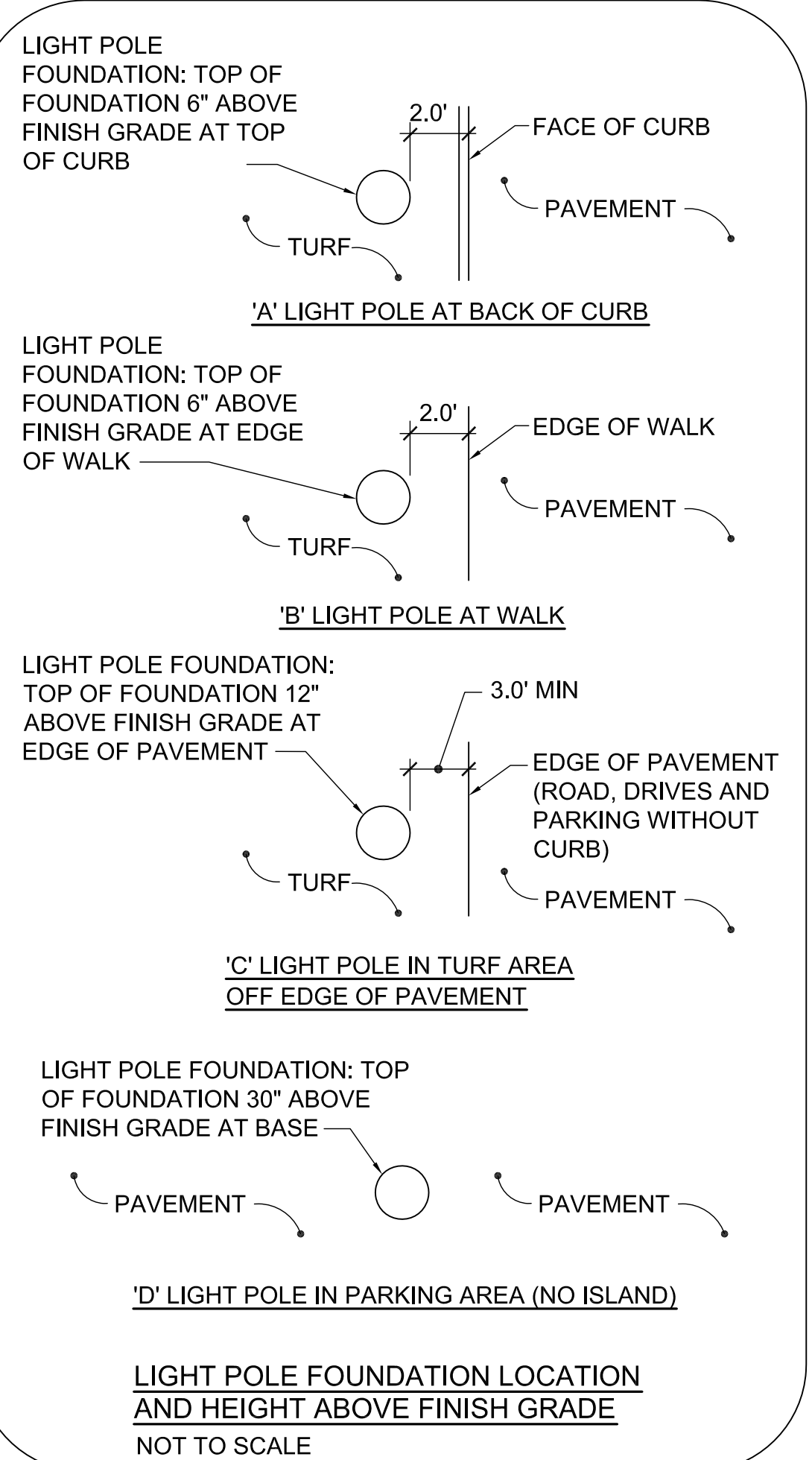
OVERHANG NOTES:
1. BRACKET SHALL BE DESIGN BY FENCE MANUFACTURER TO ADEQUATELY SUPPORT LOAD OF OVERHANG FENCE. ADDITIONAL BRACING OR BRACKETS SHALL BE PROVIDED AS RECOMMENDED BY FENCE MANUFACTURER.
2. SEAL OR CAP OVERHANG POSTS AND ENSURE BRACKET IS WATERTIGHT TO PREVENT WATER FROM ENTERING AND FREEZING THE POST ASSEMBLY.

BACKSTOP OVERHANG DETAIL

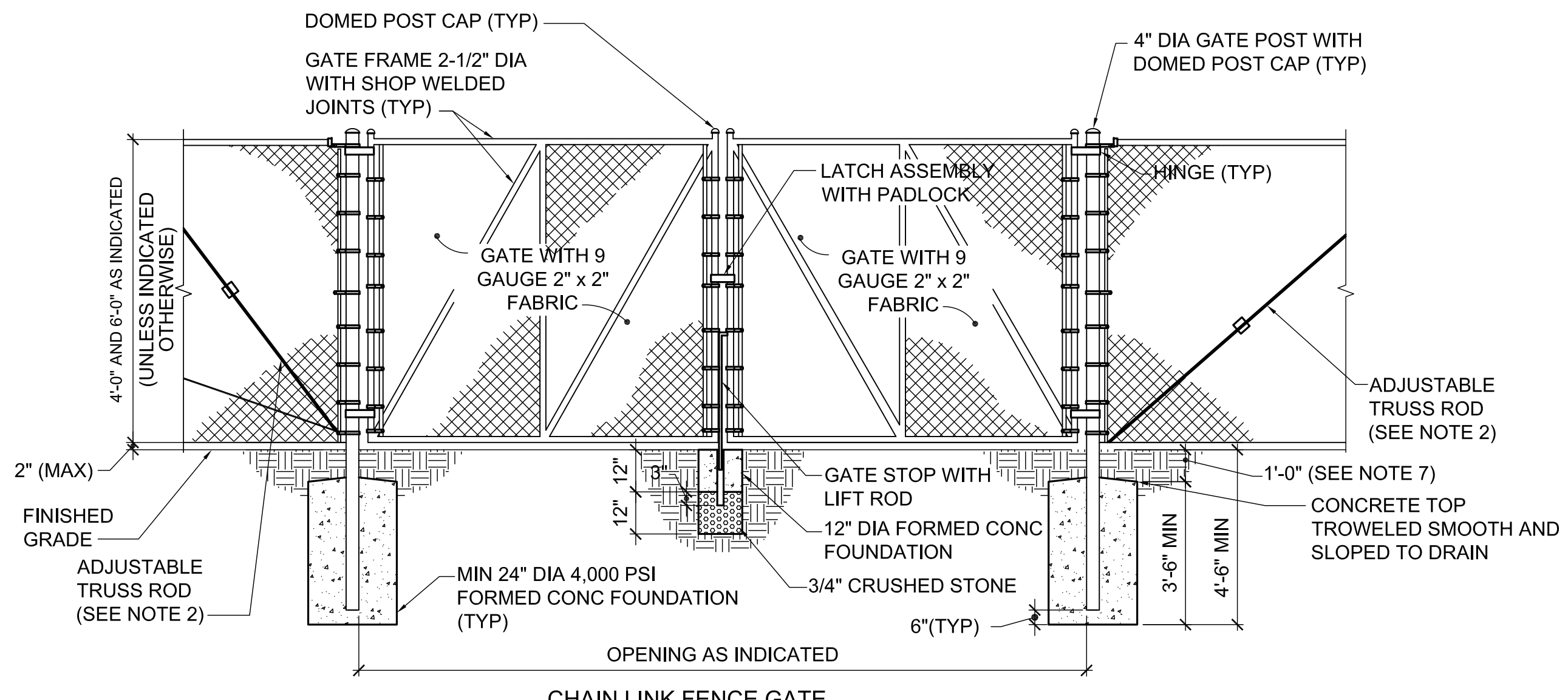
BACKSTOP NOTES:
1. ALL FENCE COMPONENTS SHALL BE GALVANIZED STEEL.
2. PROVIDE BRACE RAIL, ADJUSTABLE TRUSS ROD, AND BOTTOM RAIL ON ALL END AND CORNER FENCE SECTIONS. PROVIDE TOP, MID, AND BOTTOM RAIL ON ALL 12' HIGH FENCE SECTIONS. PROVIDE TOP AND BOTTOM RAIL ON ALL 6' HIGH FENCE SECTIONS.
3. PROVIDE CONCRETE FOOTINGS FOR ALL 12' HIGH FENCE POSTS. PROVIDE CONCRETE FOOTINGS AT END AND CORNER POSTS (CHANGE IN DIRECTION) FOR ALL 6' HIGH FENCE SECTIONS.
4. PLACE CONCRETE FOOTINGS WITH VERTICAL SIDEWALLS.
5. PROVIDE LINE POST TIES AND RAIL TIES OF SUFFICIENT LENGTH TO ALLOW EACH END OF TIE TO BE KNUCKLED BACK AND TWISTED TWICE AROUND ITSELF.



6 LIGHT POLE/CONC FOUNDATION DETAIL
C-505 NOT TO SCALE



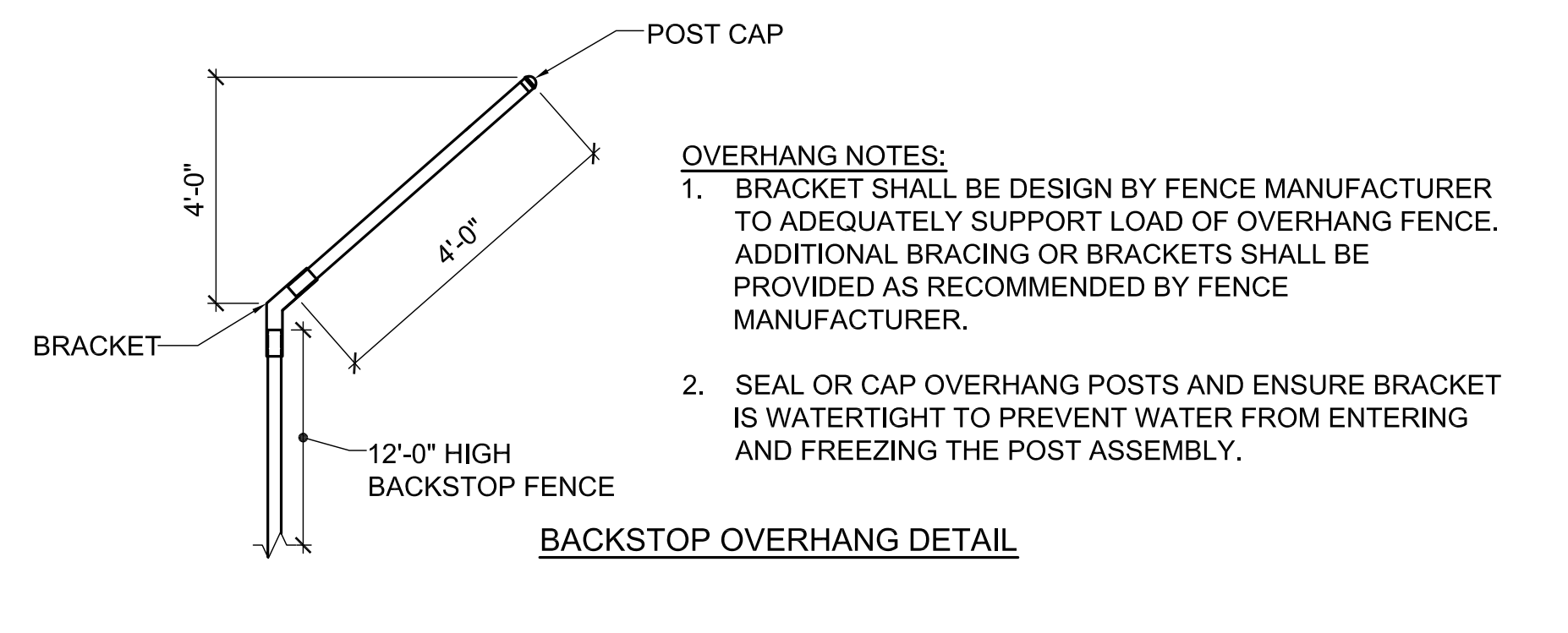
LIGHT POLE FOUNDATION LOCATION AND HEIGHT ABOVE FINISH GRADE
NOT TO SCALE



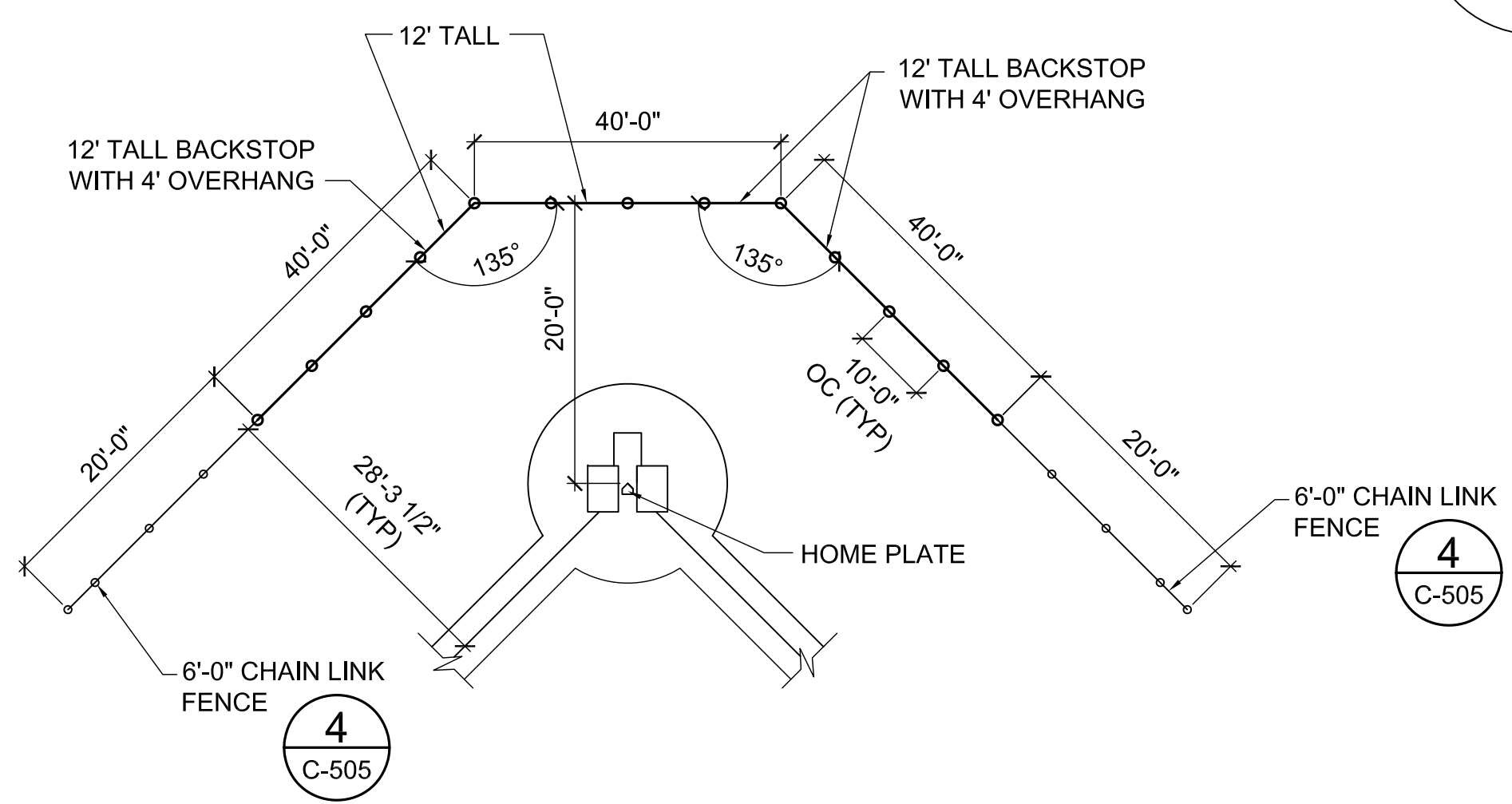
CHAIN LINK FENCE GATE

CHAIN LINK FENCE AND GATE NOTES:
1. ALL POSTS, RAILS, FABRIC, TIES AND APPURTENANCES SHALL BE GALVANIZED STEEL.
2. ALL FASTENING AND HINGE HARDWARE SHALL BE SECURED IN PLACE BY PEENING OR WELDING TO PREVENT DISASSEMBLY OF FENCING/GATES.
3. WHEN LEDGE IS ENCOUNTERED, STEEL POSTS SHALL BE SET AND GROUDED 12 INCHES DEEP UNLESS THE POSTS PENETRATE THE GROUND TO THE DEPTH INDICATED ON THE DRAWINGS.
4. CONNECT BONDING JUMPERS BETWEEN GATE POSTS AND FRAMES. BONDING JUMPERS SHALL BE MADE OF ELECTROPLATED OR HOT TIN COATED COPPER TO ENSURE HIGH CONDUCTIVITY.
5. MAKE GROUNDING CONNECTIONS AT BARE METAL POINTS OF CONTACT.
6. PIPE SIZES INDICATED ARE OUTSIDE DIAMETER (FENCE INDUSTRY STANDARD).
7. IN PAVED AREAS, EXTEND CONCRETE FOUNDATIONS TO FINISH GRADE.
8. FOR EACH GATE LEAF, PROVIDE GATE KEEPERS CONSISTING OF 2" DIA x 4'-0" MIN HIGH POST WITH MECHANICAL LATCH SECURING THE FREE END OF THE GATE IN THE FULL OPEN POSITION

4 CHAIN LINK FENCE AND GATE DETAILS
C-505 NOT TO SCALE



5 BACKSTOP DETAILS
C-505 NOT TO SCALE



BACKSTOP AND DUGOUT LAYOUT

STATE OF MAINE PUBLIC SCHOOL PROJECT			TITLE: NEW FRED P. HALL ELEMENTARY SCHOOL LOCATION: 23 ORONO ROAD, PORTLAND, ME TITLE THIS DRAW: SITE DETAILS - 3
DRAWN BY: JSD CHECKED BY: JLG	DATE: 03/17/17		DRAWING NO.: C-505 SHEET NO.: 50 OF 312