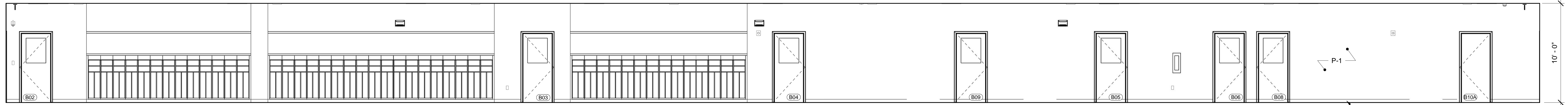
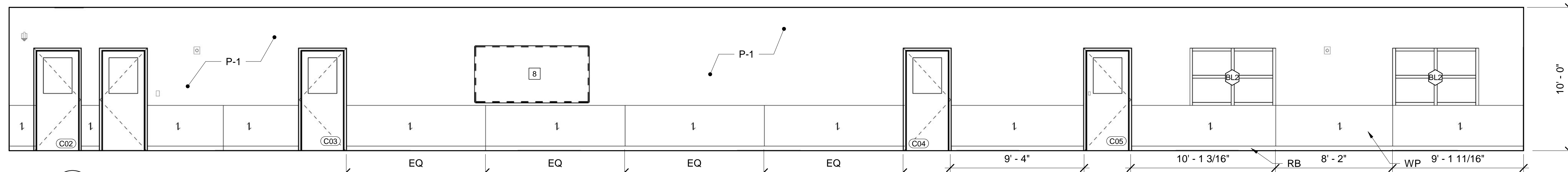


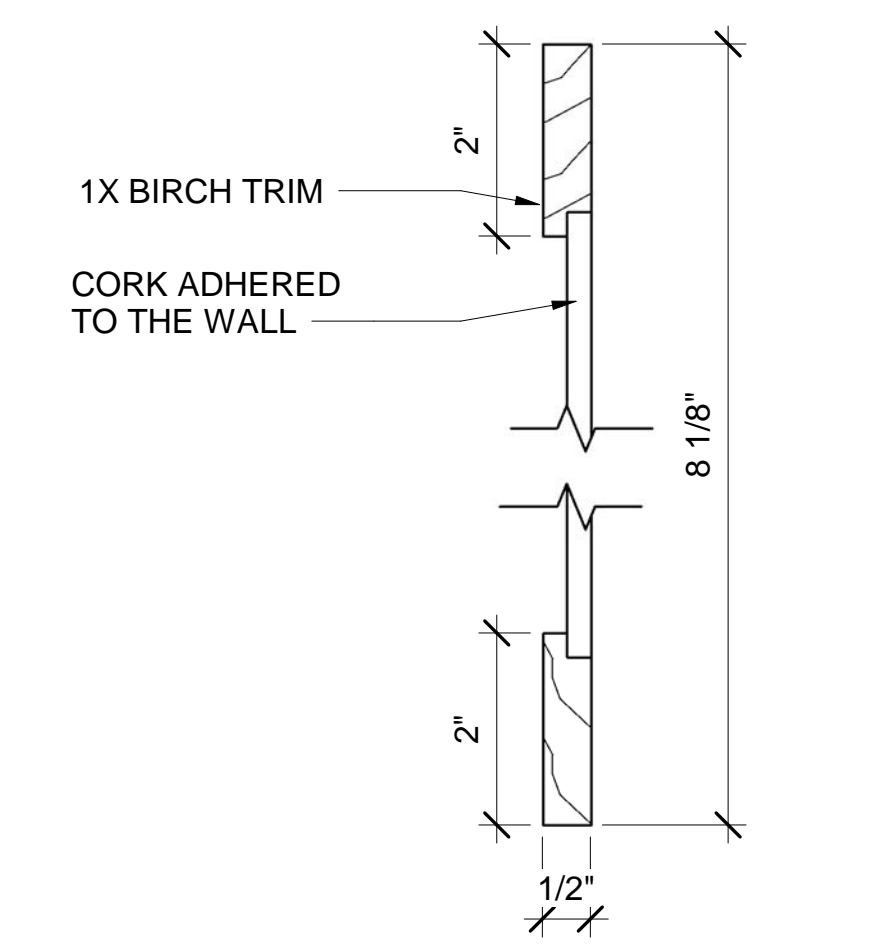
**1 CORRIDOR B14 - NORTH ELEV**  
 AE102/AE749 SCALE: 1/4" = 1'-0"



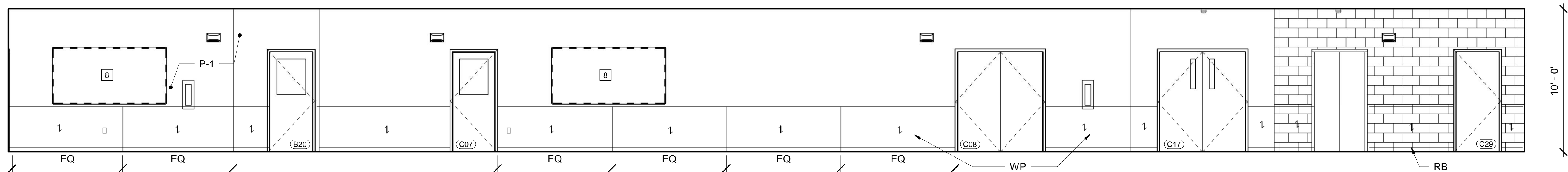
**2 CORRIDOR B14 - SOUTH ELEV**  
 AE102/AE749 SCALE: 1/4" = 1'-0"



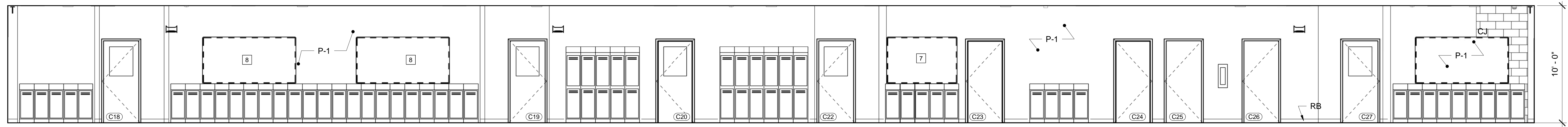
**3 CORRIDOR C06 - EAST ELEV**  
 AE102/AE749 SCALE: 1/4" = 1'-0"



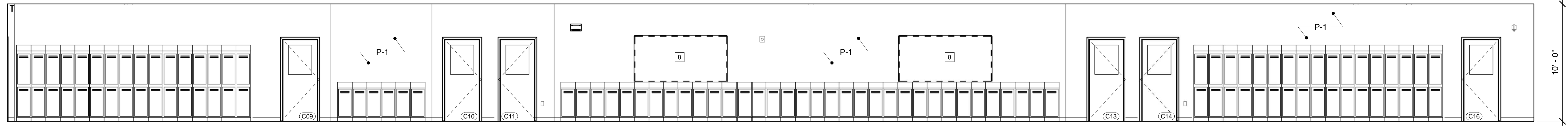
**7 SECTION THRU CORK PANEL**  
 AE749/AE749 SCALE: 6" = 1'-0"



**4 CORRIDOR C06 - WEST ELEV**  
 AE102/AE749 SCALE: 1/4" = 1'-0"

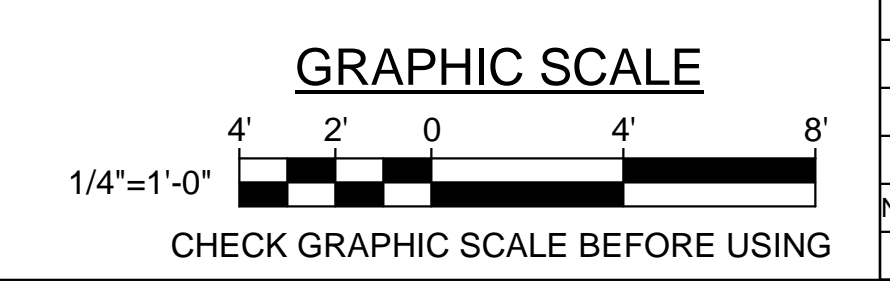


**5 CORRIDOR C17 - NORTH ELEV**  
 AE103/AE749 SCALE: 1/4" = 1'-0"



**6 CORRIDOR C17 - SOUTH ELEV**  
 AE103/AE749 SCALE: 1/4" = 1'-0"

**GENERAL NOTES:**  
 1. SEE SHEET AE004 FOR KEYNOTES.



		<b>STATE OF MAINE</b> <b>PUBLIC SCHOOL PROJECT</b> TITLE: PORTLAND PUBLIC SCHOOLS NEW FRED P. HALL ELEMENTARY SCHOOL LOCATION: 23 ORONO ROAD, PORTLAND, ME TITLE THIS DWG: INTERIOR ELEVATIONS
DRAWN BY: JGB CHECK BY: TGB	OAK POINT ASSOCIATES AE749 SHEET NO. 209 OF 312	NO. DATE DESCRIPTION BY NO. DATE REVISIONS
DATE: 03/17/17		231 Main Street, Biddeford, Maine 04005 207.283.9192