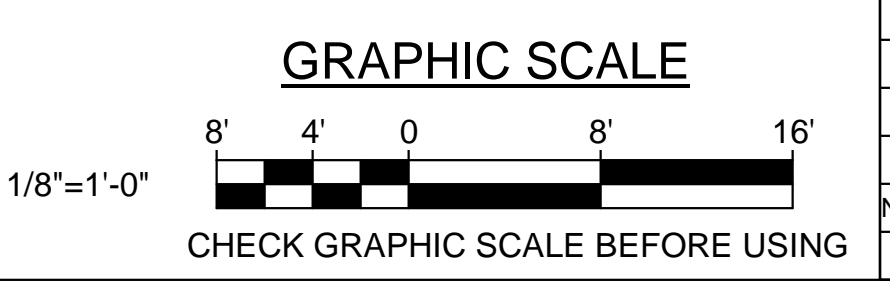


1 FIRST FLOOR REFLECTED CEILING PART PLAN WING A
 AE201 AE701 SCALE: 1/8" = 1'-0"

RCP LEGEND: (THIS SHEET ONLY)

- 2x2 ACT
- 2x4 ACT
- GYP BD
- MECH DIFFUSERS
- GRID-MOUNTED LIGHTING FIXTURES
- HANGING LIGHTING FIXTURE
- SPEAKER



		STATE OF MAINE PUBLIC SCHOOL PROJECT TITLE: PORTLAND PUBLIC SCHOOLS NEW FRED P. HALL ELEMENTARY SCHOOL LOCATION: 23 ORONO ROAD, PORTLAND, ME	
		TITLE THIS DWG: FIRST FLOOR REFLECTED CEILING PART PLAN WING A	
DRAWN BY: CET CHECK BY: TGB	NO. DATE DESCRIPTION REVISIONS	BY NO. DATE 03/17/17	OAK POINT ASSOCIATES DRAWING NO. AE701 SHEET NO. 193 OF 312 <small>231 Main Street, Biddeford, Maine 04005 207.283.9192</small>

3/20/2017 2:43:25 PM C:\Users\arkhigester\Documents\1602.08_HALL_SCHOOL_ARCHITECTURAL_V17.sskhgester.rvt