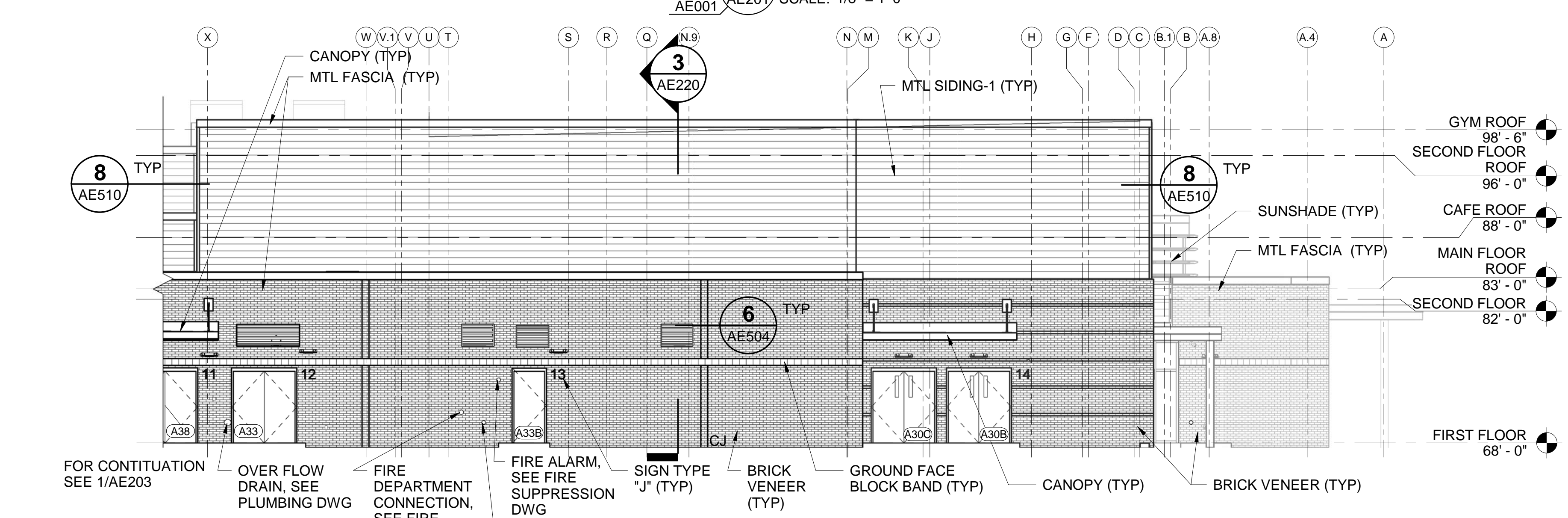
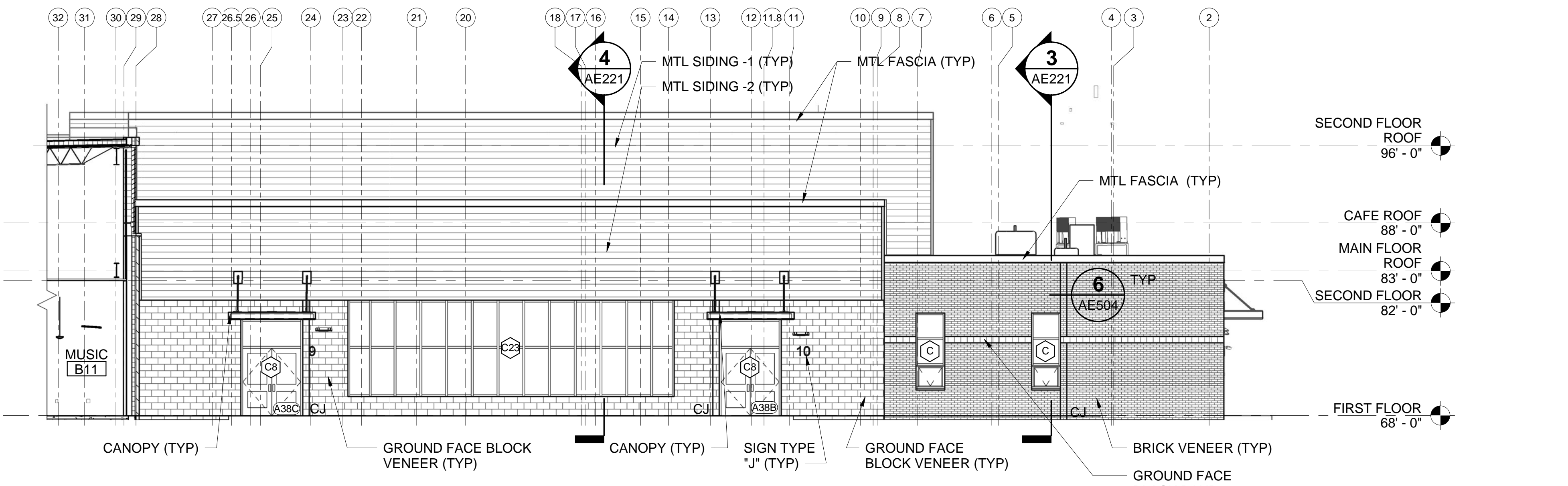


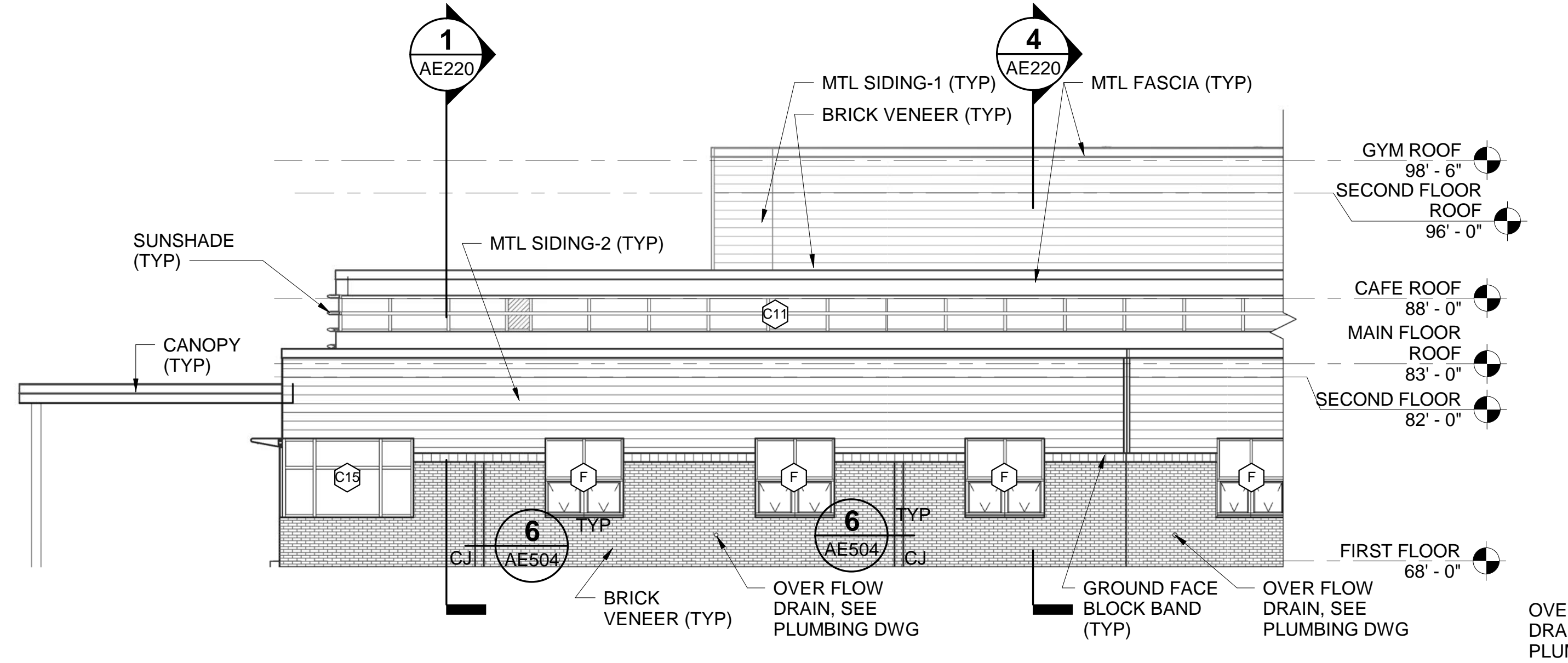
**1 EXTERIOR SOUTH ELEVATION WEST END**  
 AE201/ SCALE: 1/8" = 1'-0"



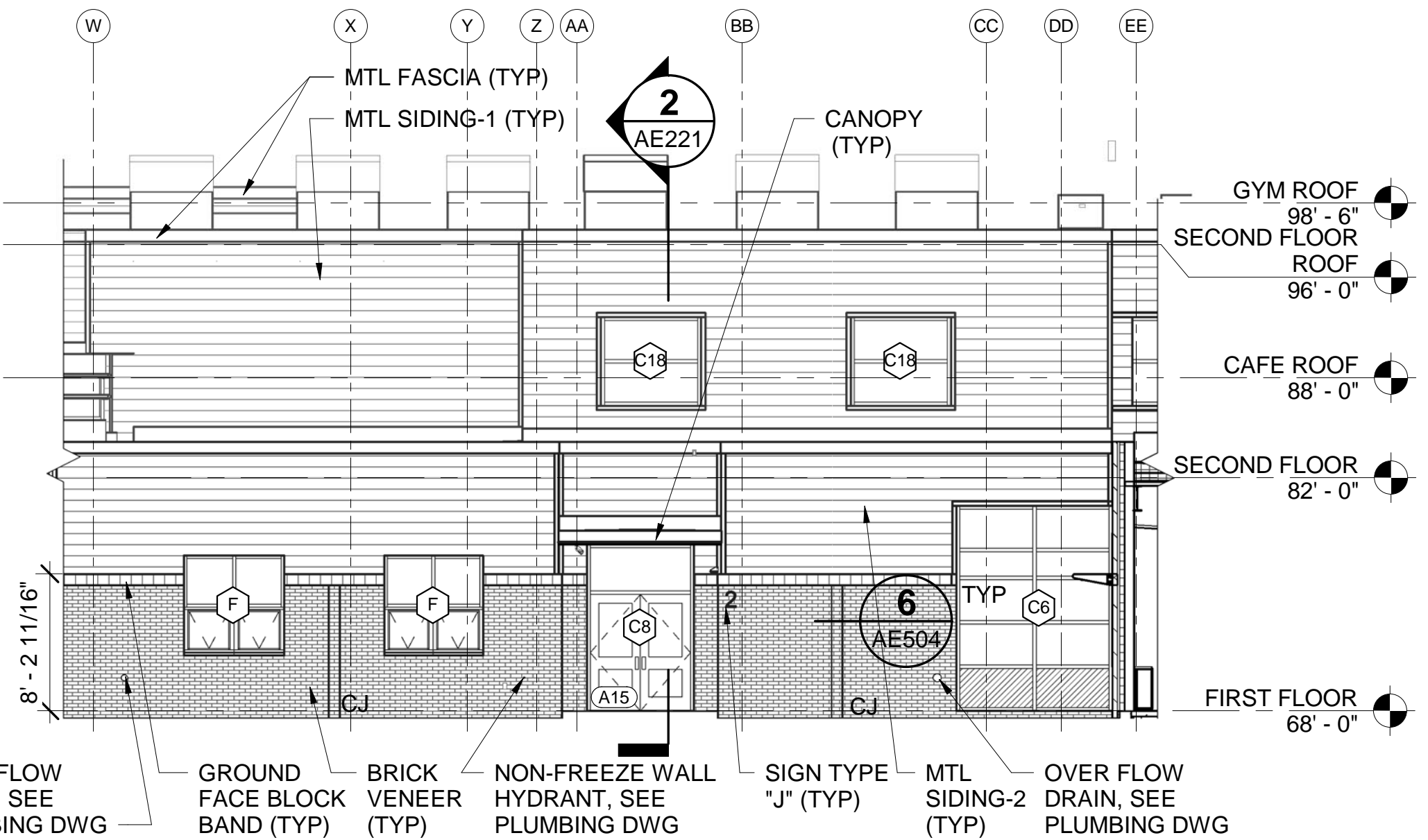
**2 EXTERIOR OVERALL WEST ELEVATION GYM END**  
 AE201/ SCALE: 1/8" = 1'-0"



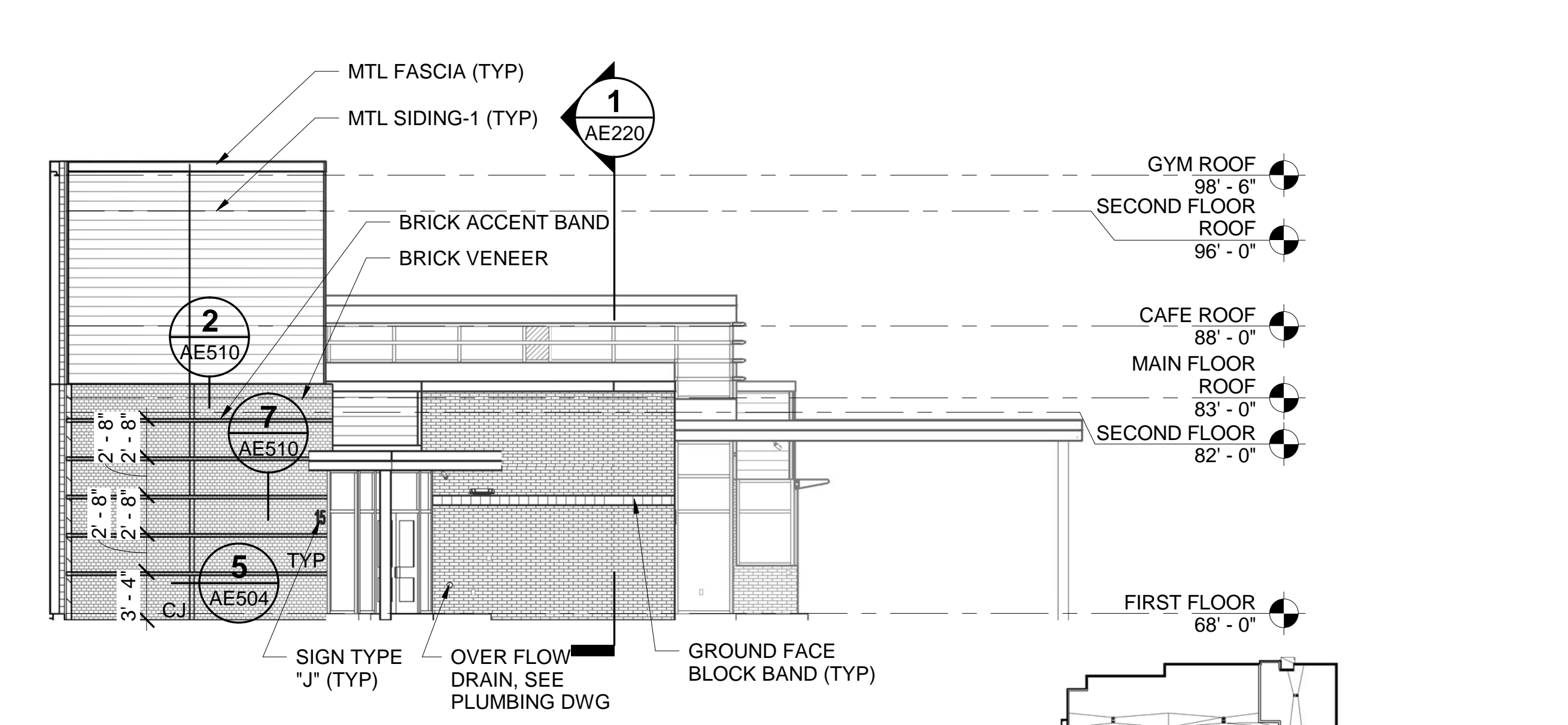
**3 EXTERIOR NORTH CAFETERIA ELEVATION**  
 AE201/ SCALE: 1/8" = 1'-0"



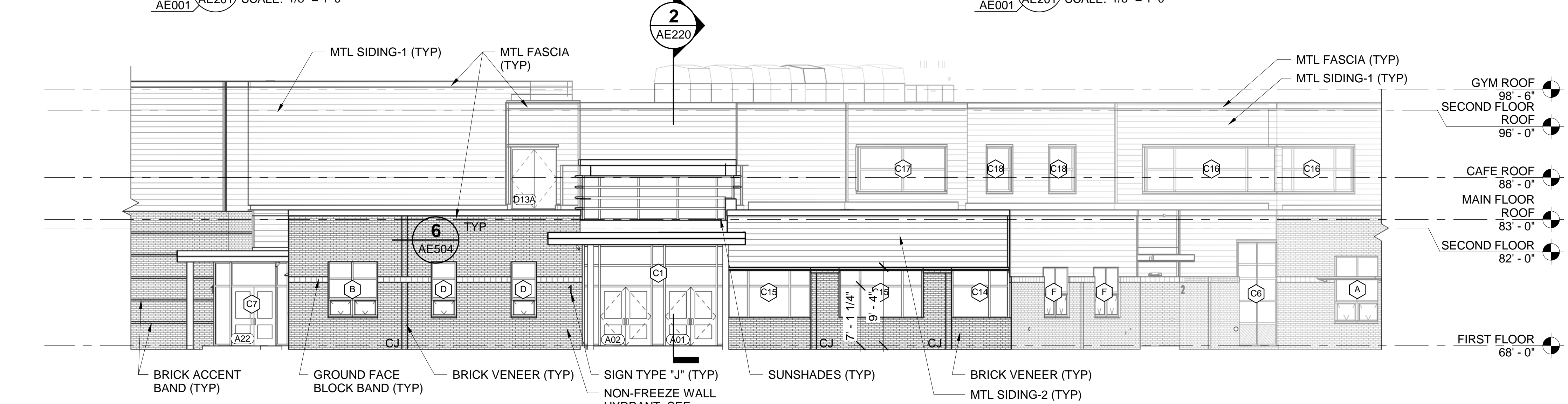
**4 EXTERIOR EAST ELEVATION ADMIN WING**  
 AE201/ SCALE: 1/8" = 1'-0"



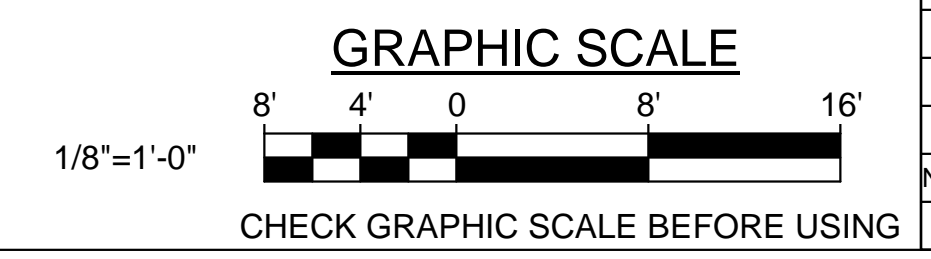
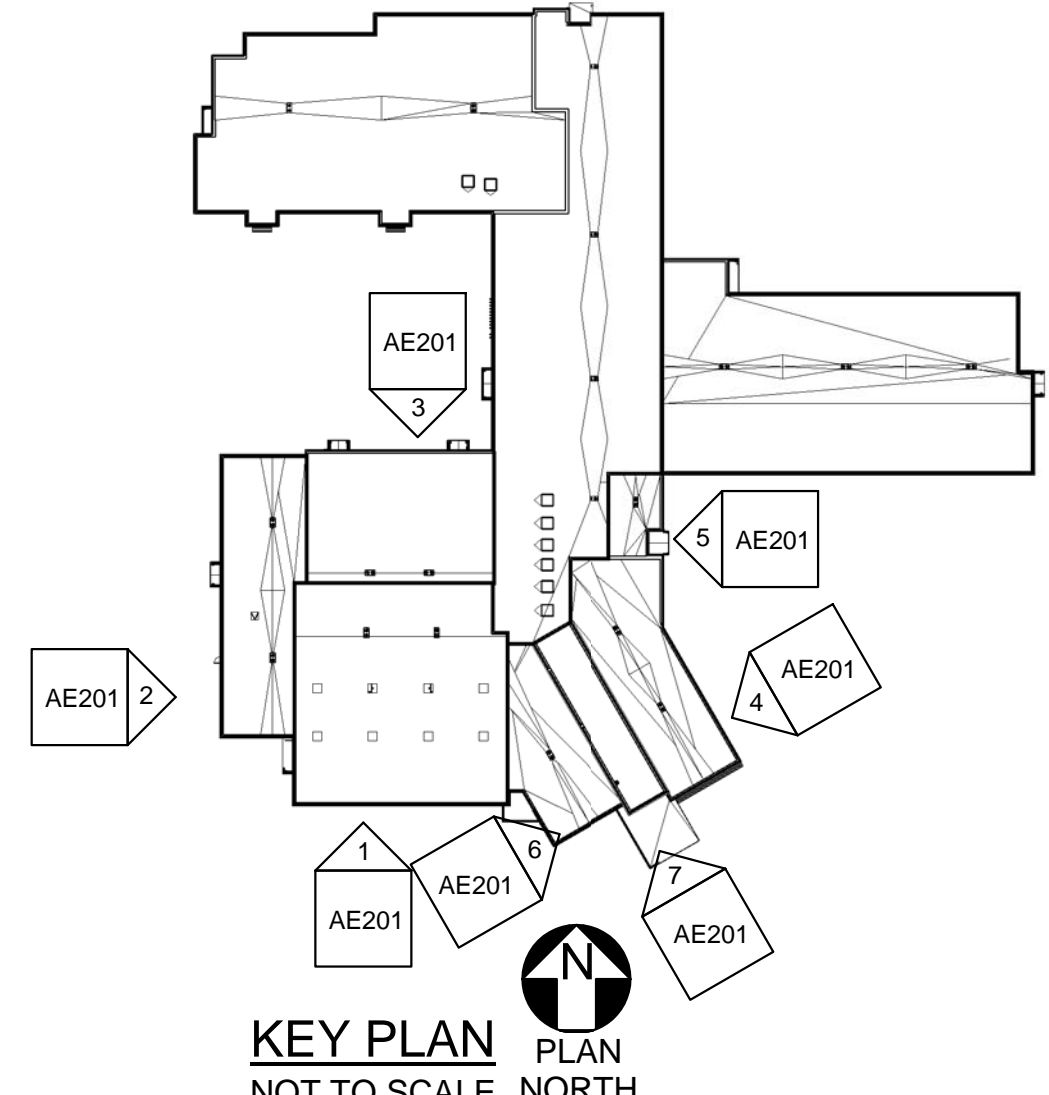
**5 EXTERIOR EAST ELEVATION A WING**  
 AE201/ SCALE: 1/8" = 1'-0"



**6 EXTERIOR MAIN ENTRY WEST ELEVATION**  
 AE201/ SCALE: 1/8" = 1'-0"



**7 EXTERIOR MAIN ENTRY ELEVATION**  
 AE201/ SCALE: 1/8" = 1'-0"



		<p><b>STATE OF MAINE</b>  <b>PUBLIC SCHOOL PROJECT</b>        TITLE: PORTLAND PUBLIC SCHOOLS        NEW FRED P. HALL ELEMENTARY SCHOOL        LOCATION: 23 ORONO ROAD, PORTLAND, ME</p>
<p>DRAWN BY: JGB        CHECK BY: TGB</p>	<p>DATE: 03/17/17</p>	<p>DATE: 03/17/17</p>
<p>NO. DATE DESCRIPTION BY NO.</p>		<p>REVISIONS</p>
<p>2017.03.17 135 OF 312</p>		<p>2017.03.17 135 OF 312</p>