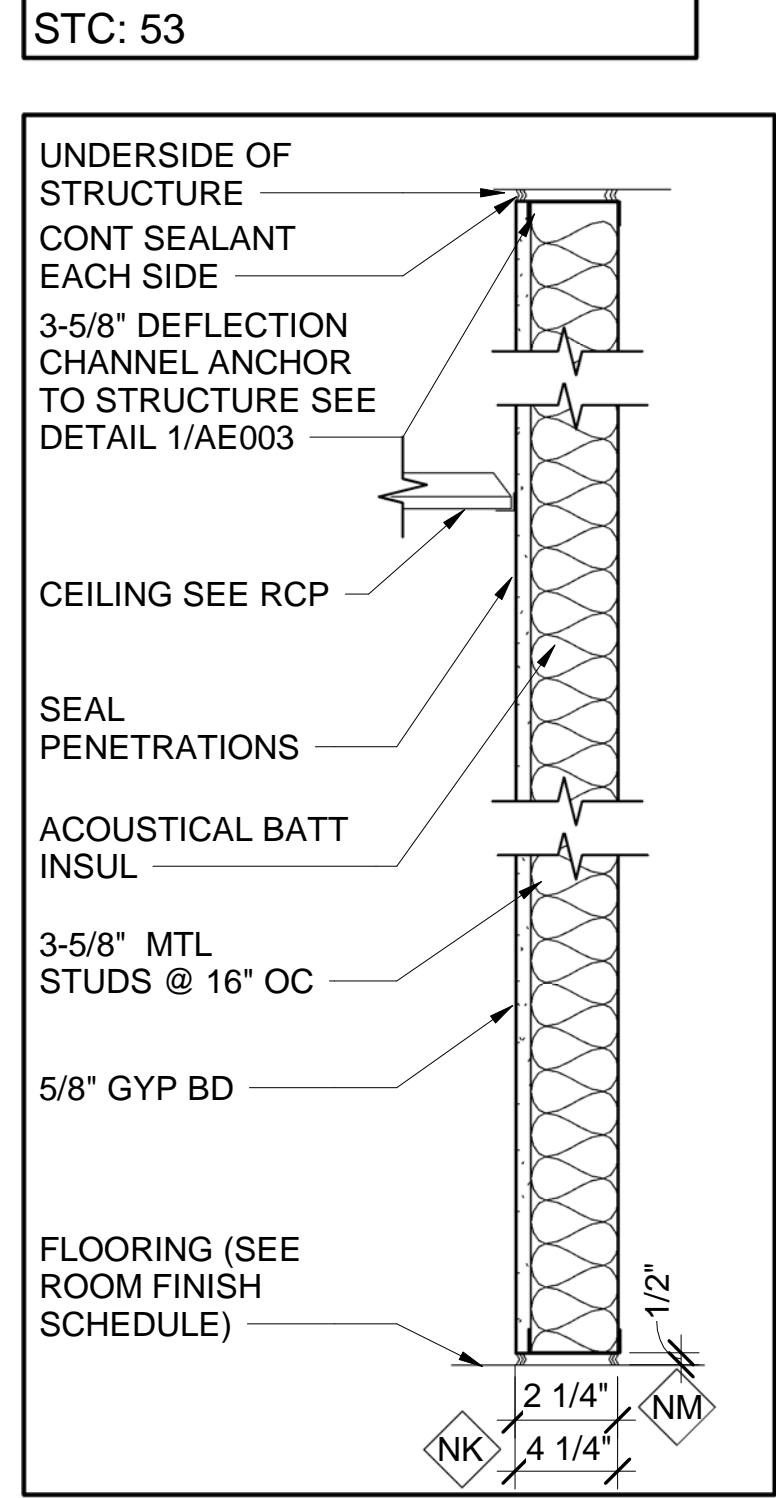


3-5/8" MTL STUD W/ 1/2" RESILIENT CHANNEL FULL HGT STC: 49

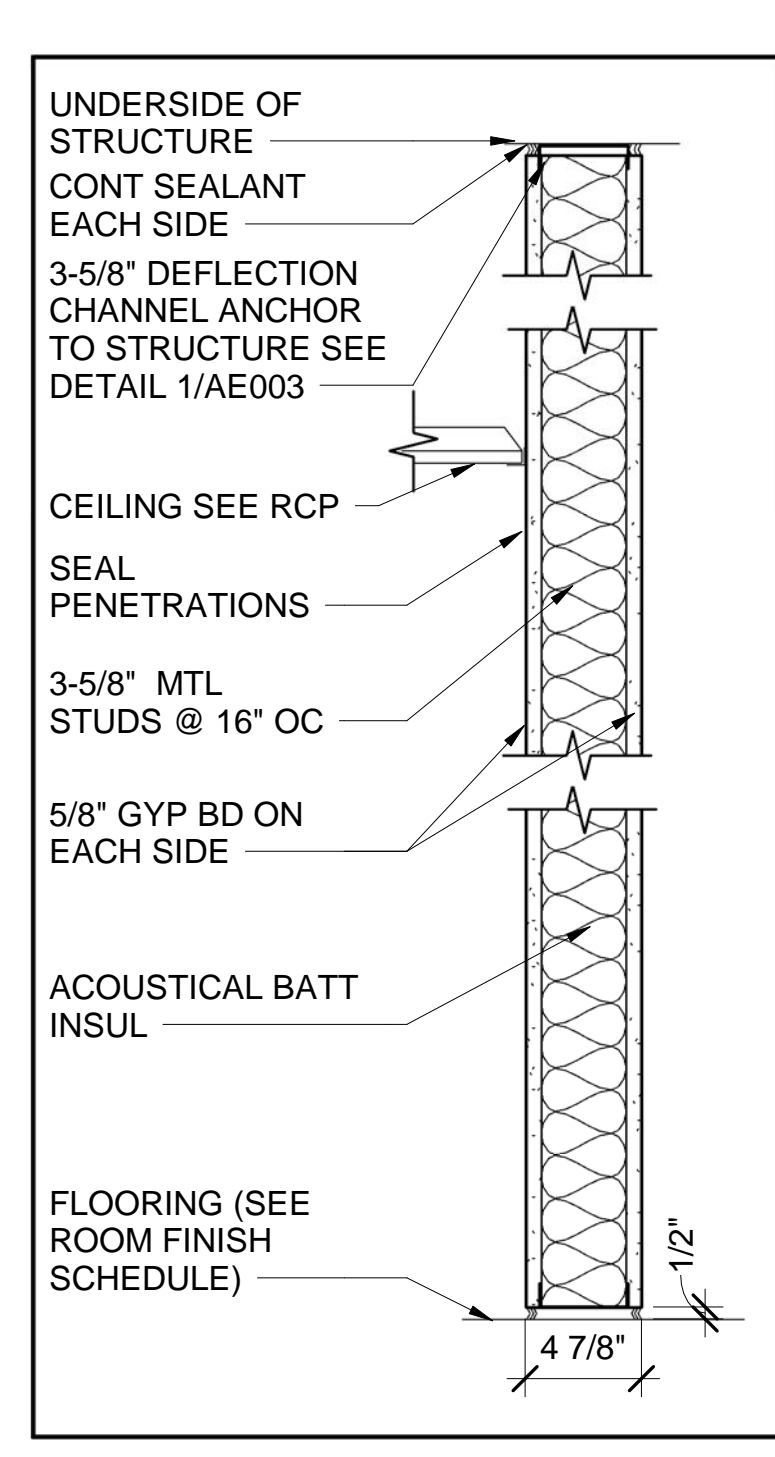
6" MTL STUD W/ 1/2" RESILIENT CHANNEL FULL HGT STC: 53

6" MTL STUD W/ 1/2" RESILIENT CHANNEL ON BOTH SIDES FULL HGT STC: 53

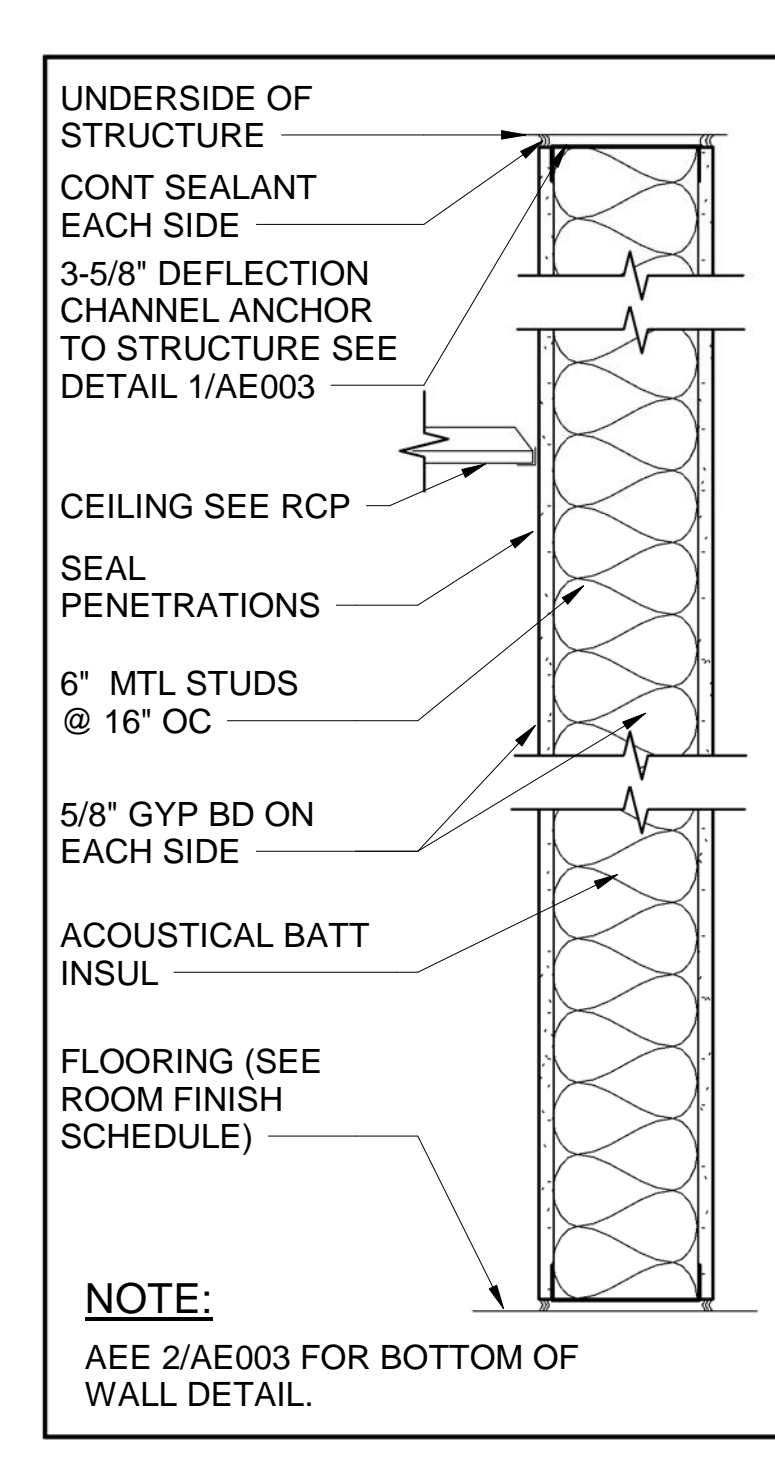


3-5/8" MTL STUD FULL HGT

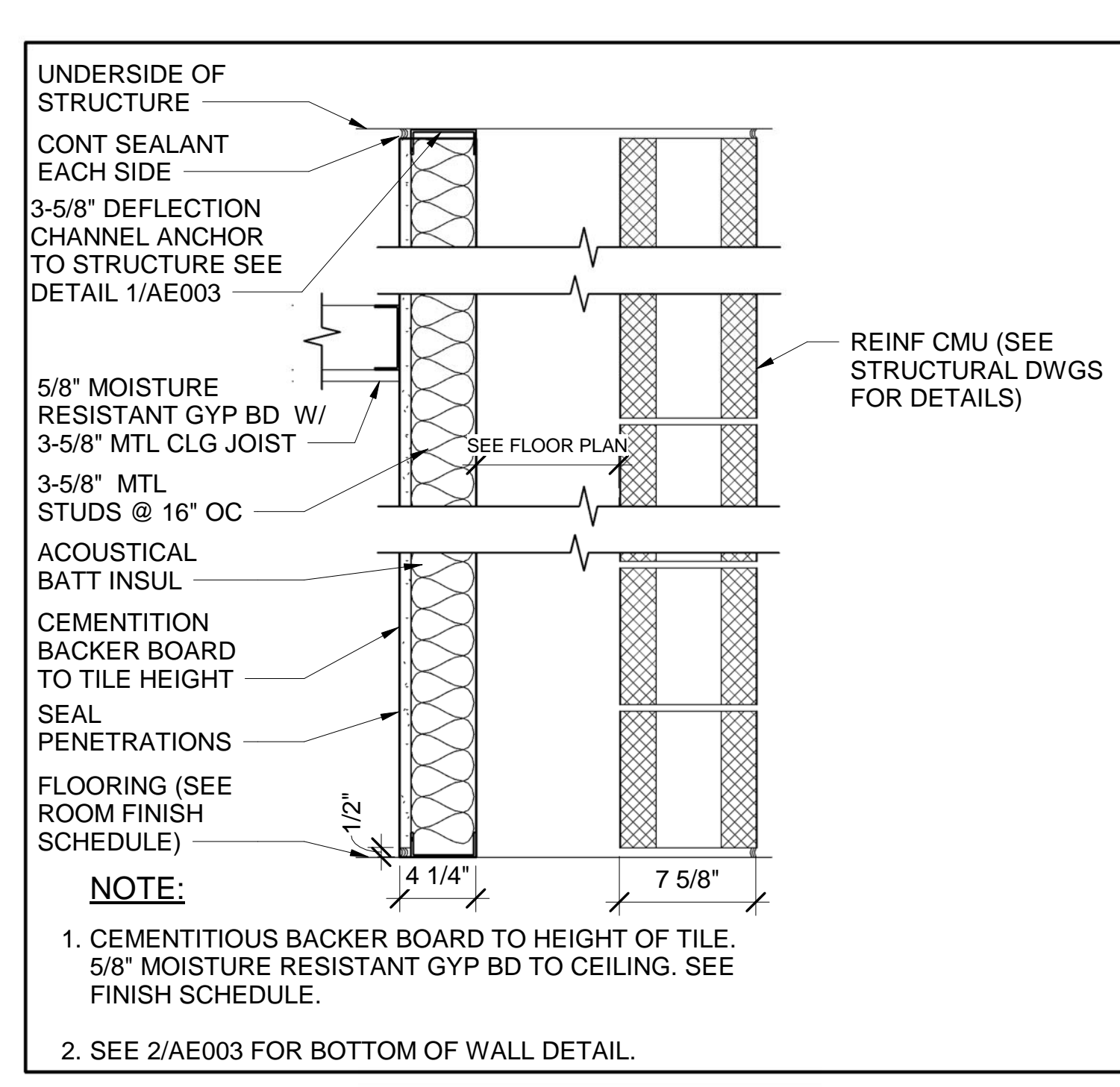
1-5/8" MTL STUD FULL HGT



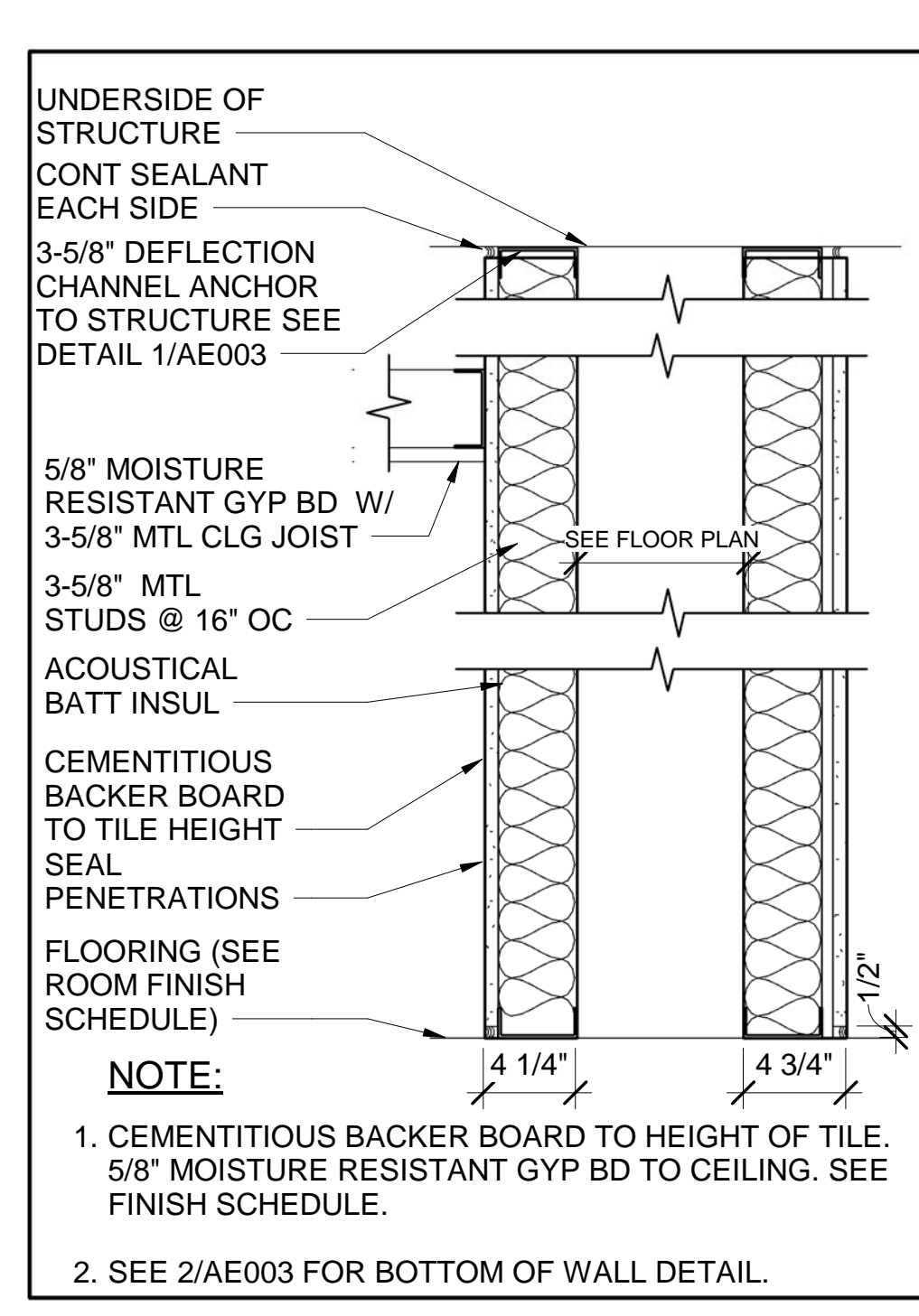
3-5/8" MTL STUD FULL HGT 5/8" GYP BD EACH SIDE



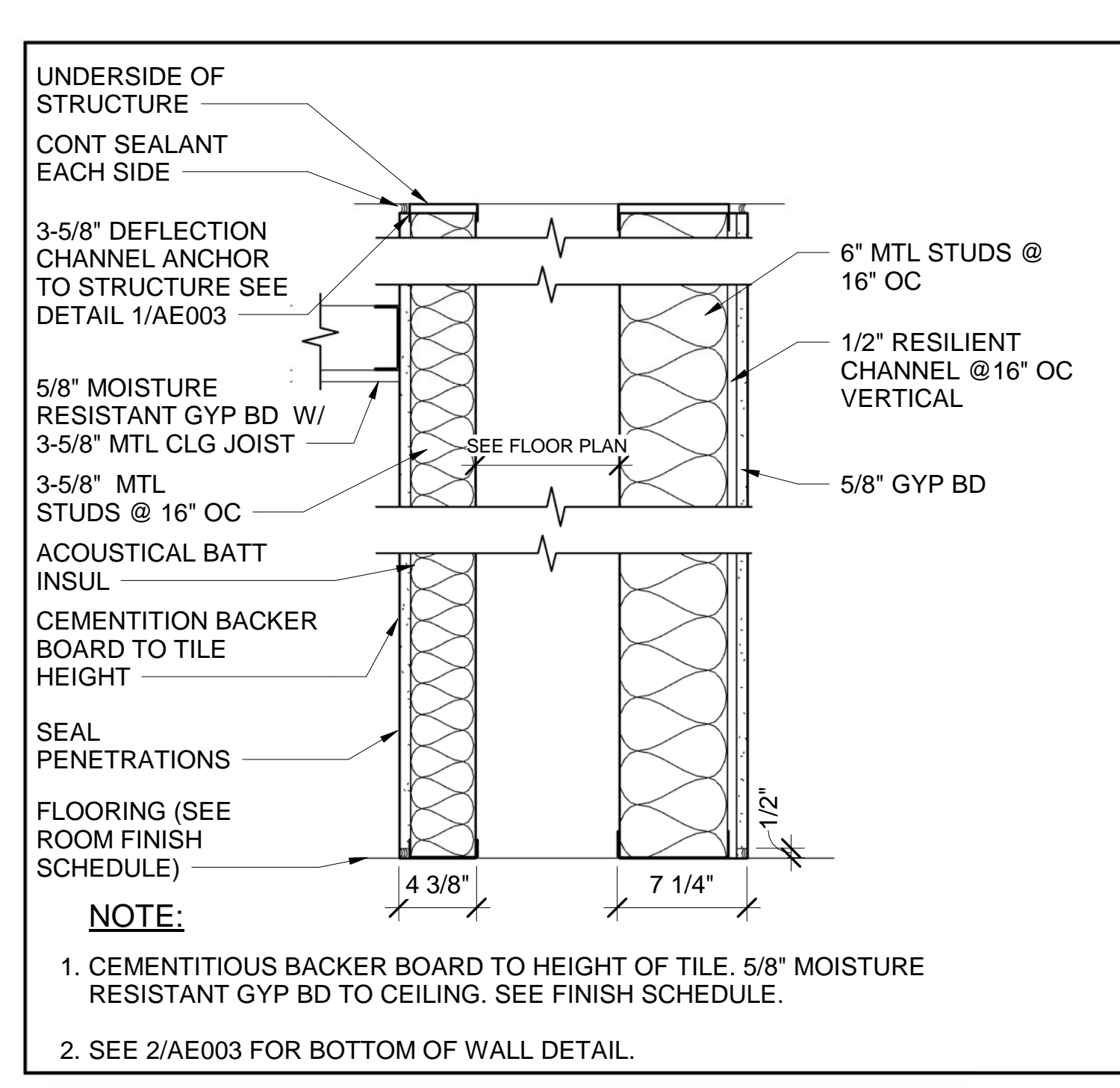
6" MTL STUD FULL HGT STC: 40



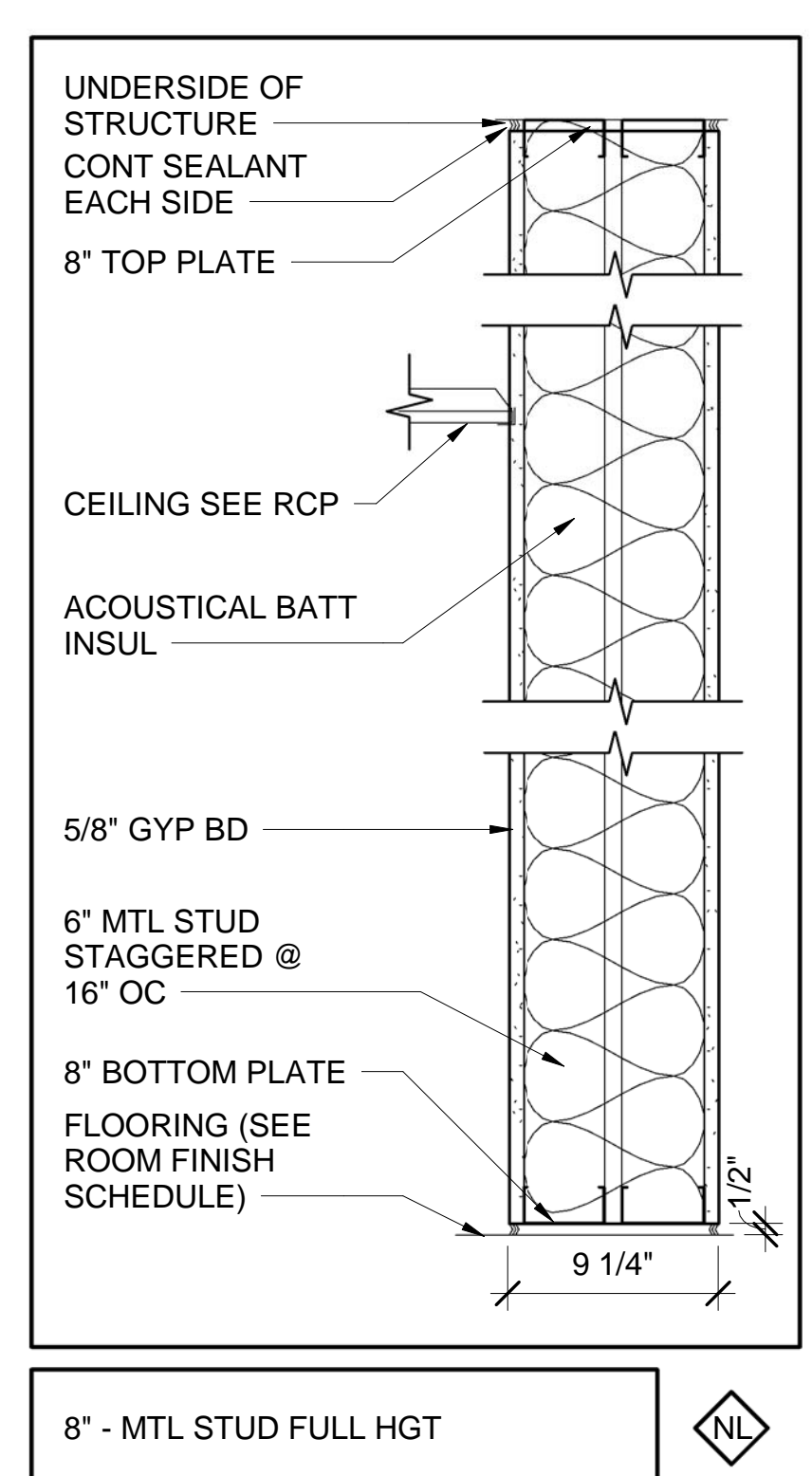
TOILET SIDE 3-5/8" MTL STUD CHASE WALL FULL HEIGHT OPPOSING SIDE 8" REINFORCED CMU



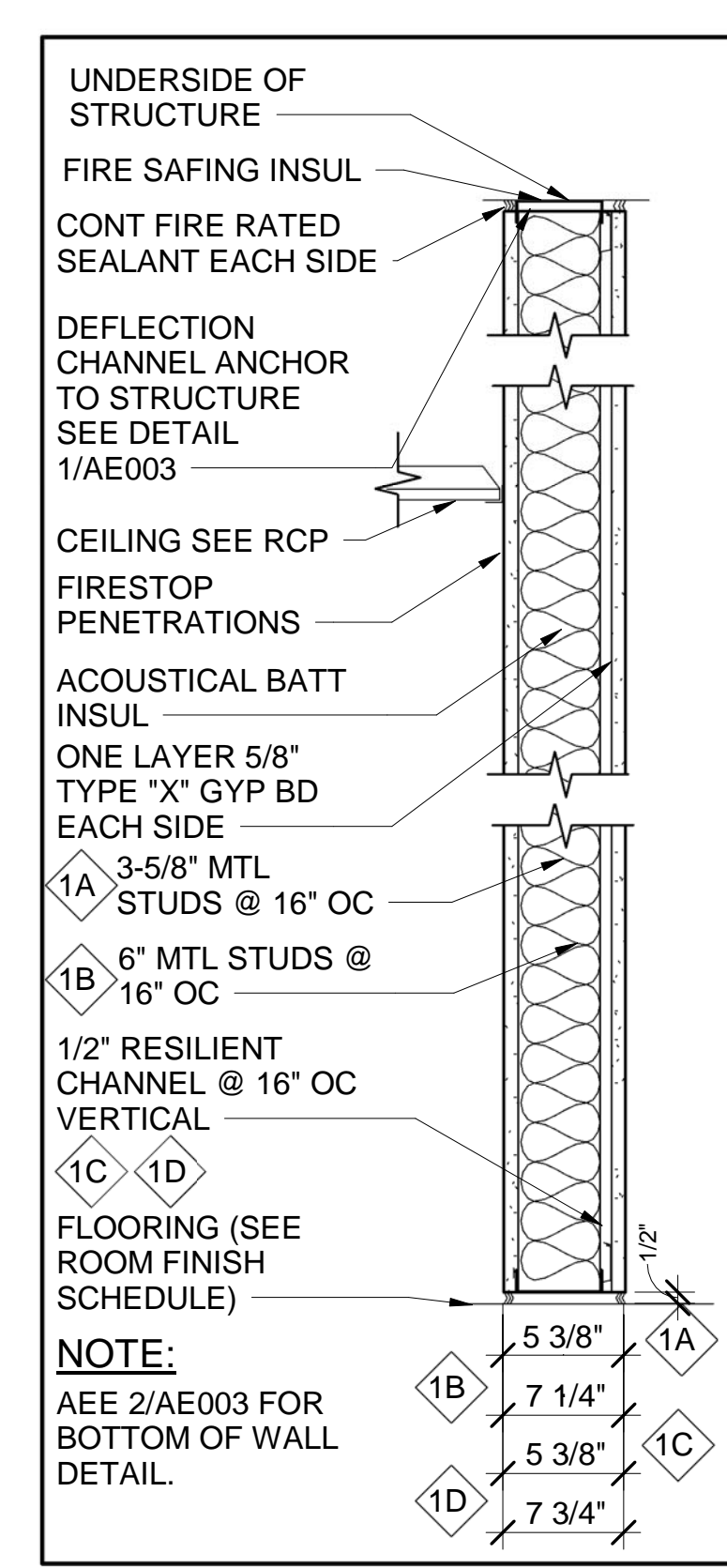
3-5/8" MTL STUD CHASE WALL FULL HGT



TOILET SIDE 3-5/8" MTL STUD CHASE WALL FULL HEIGHT OPPOSING SIDE 6" MTL STUD CHASE WALL FULL HEIGHT



8" - MTL STUD FULL HGT

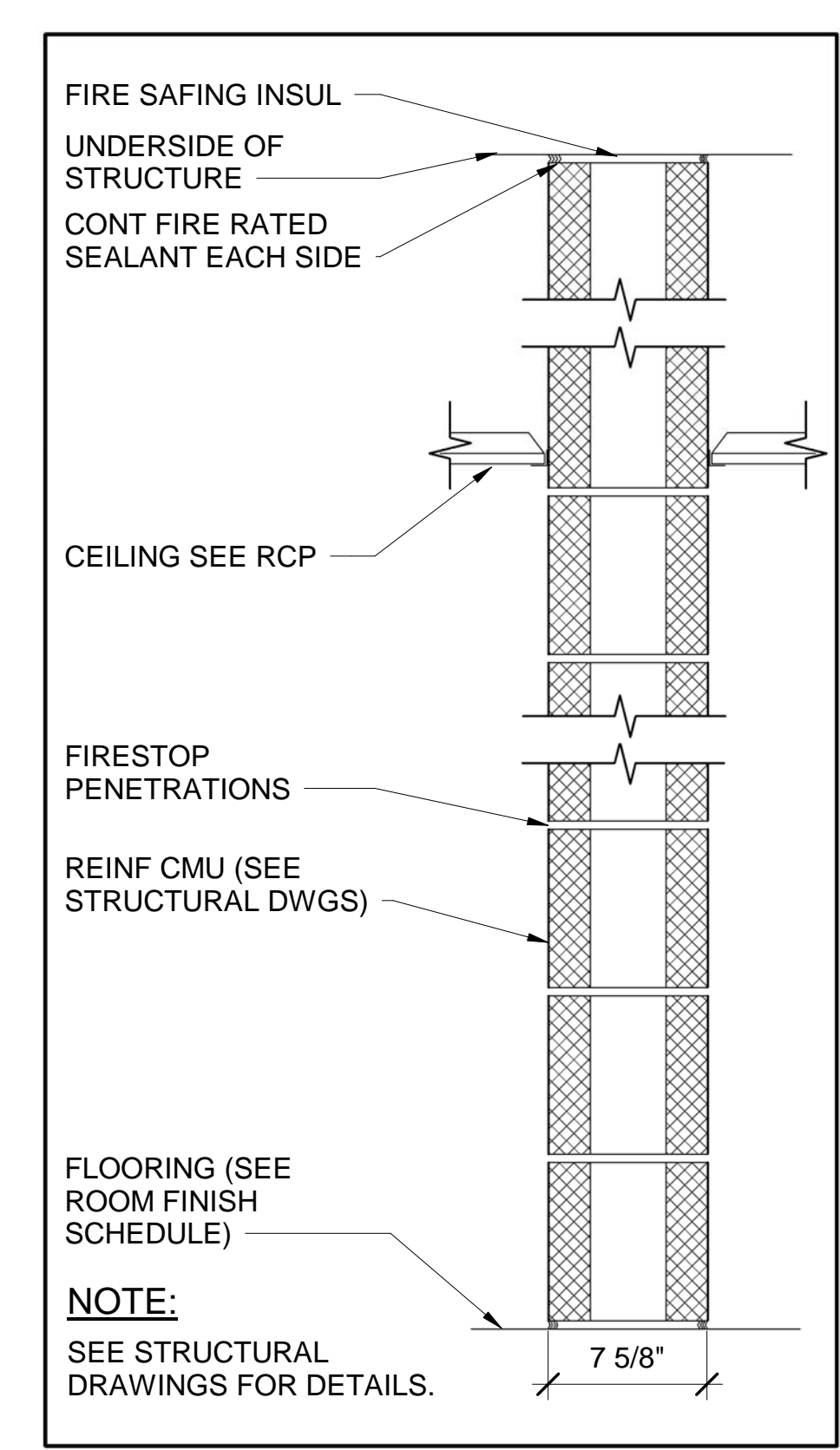


3-5/8" MTL STUD FULL HGT 1 HOUR RATED UL U465 STC: 49

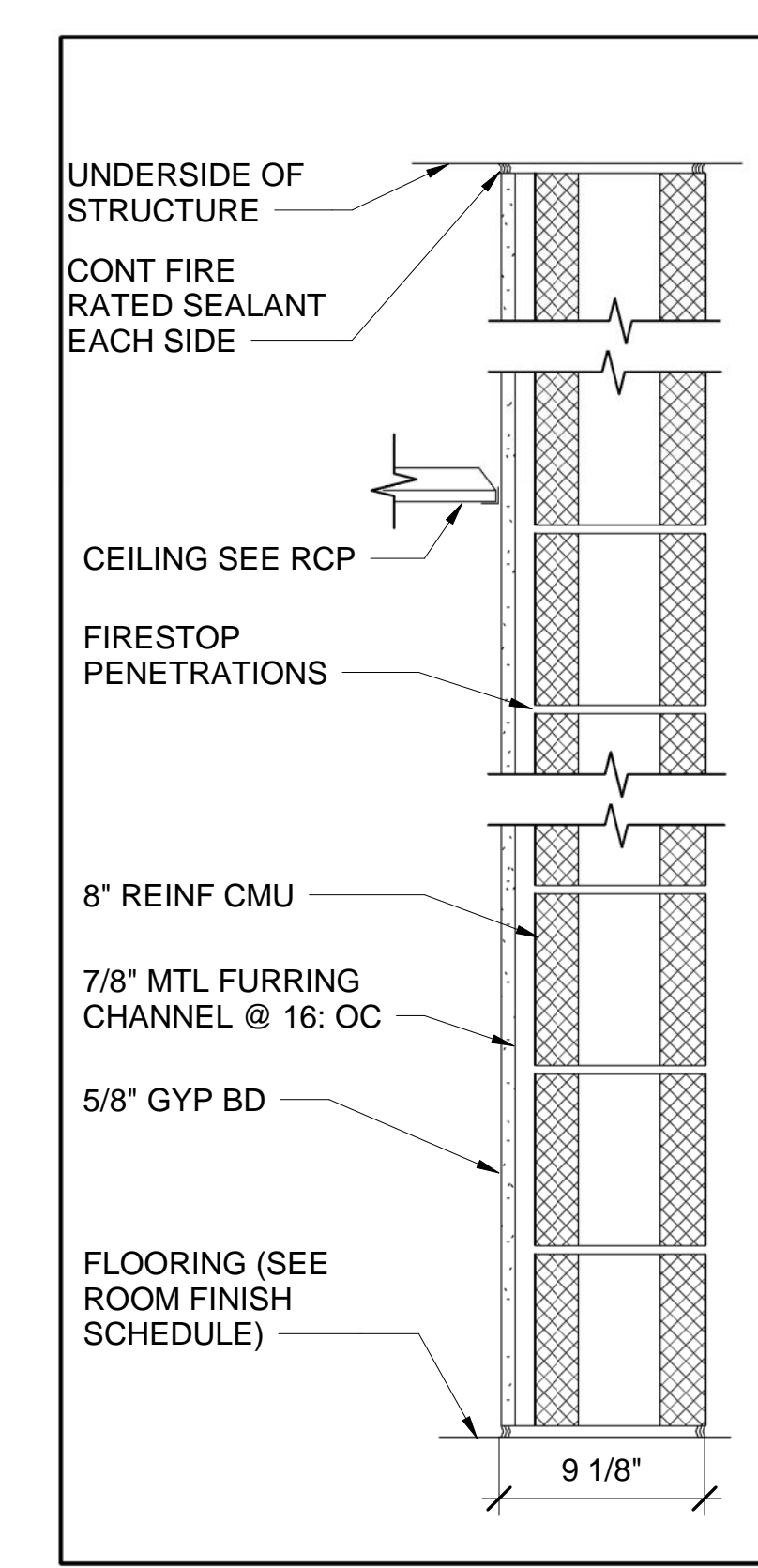
6" MTL STUD FULL HGT 1 HOUR RATED UL U465 STC: 33

3 5/8" MTL STUD FULL HGT 1 HOUR RATED UL U465 1/2" RESILIENT CHANNELS @ 16" OC STC: 49

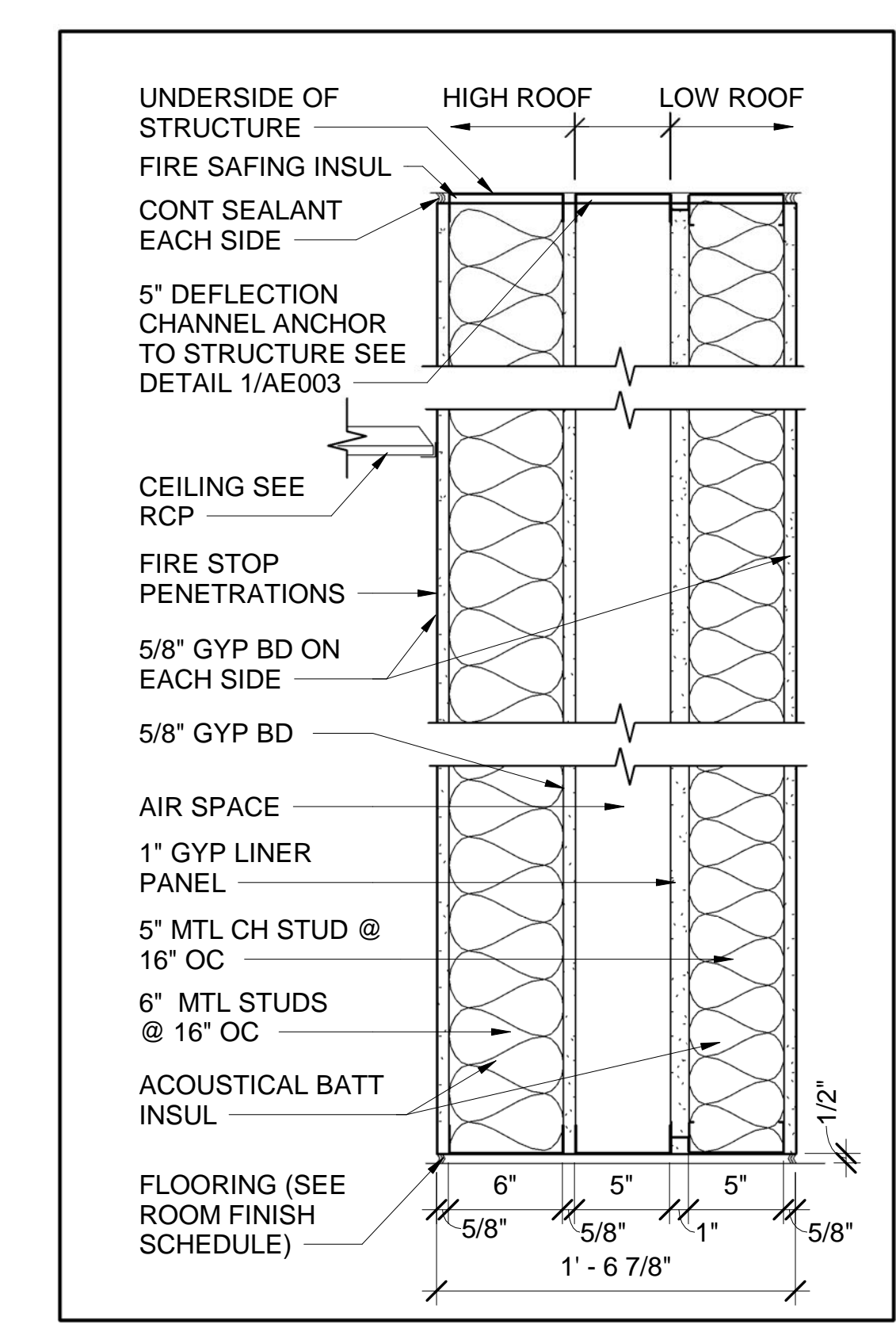
6" MTL STUD FULL HGT 1 HOUR RATED UL U465 1/2" RESILIENT CHANNELS @ 16" OC STC: 53



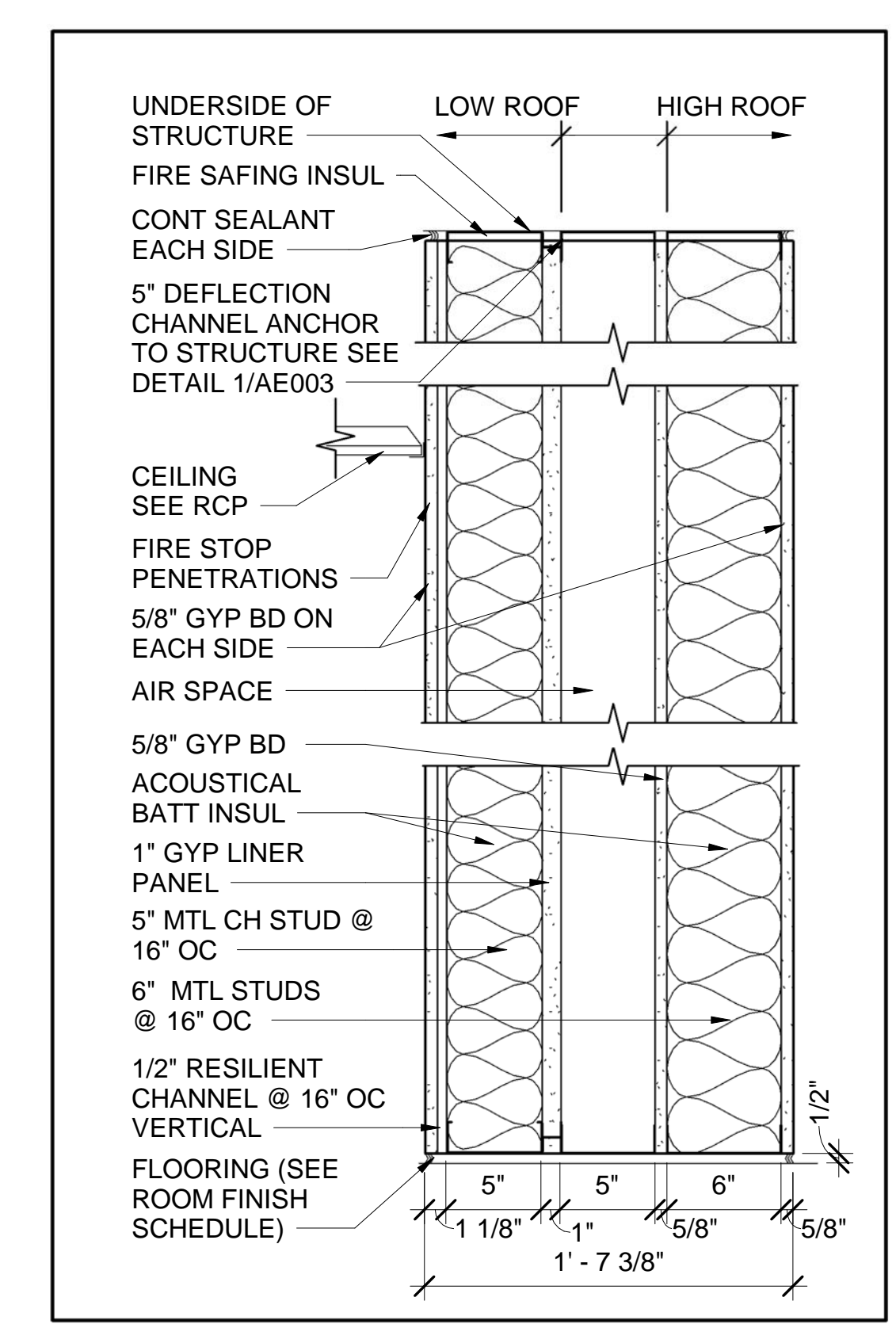
8" REINFORCED CMU 1 HOUR RATED UL U906



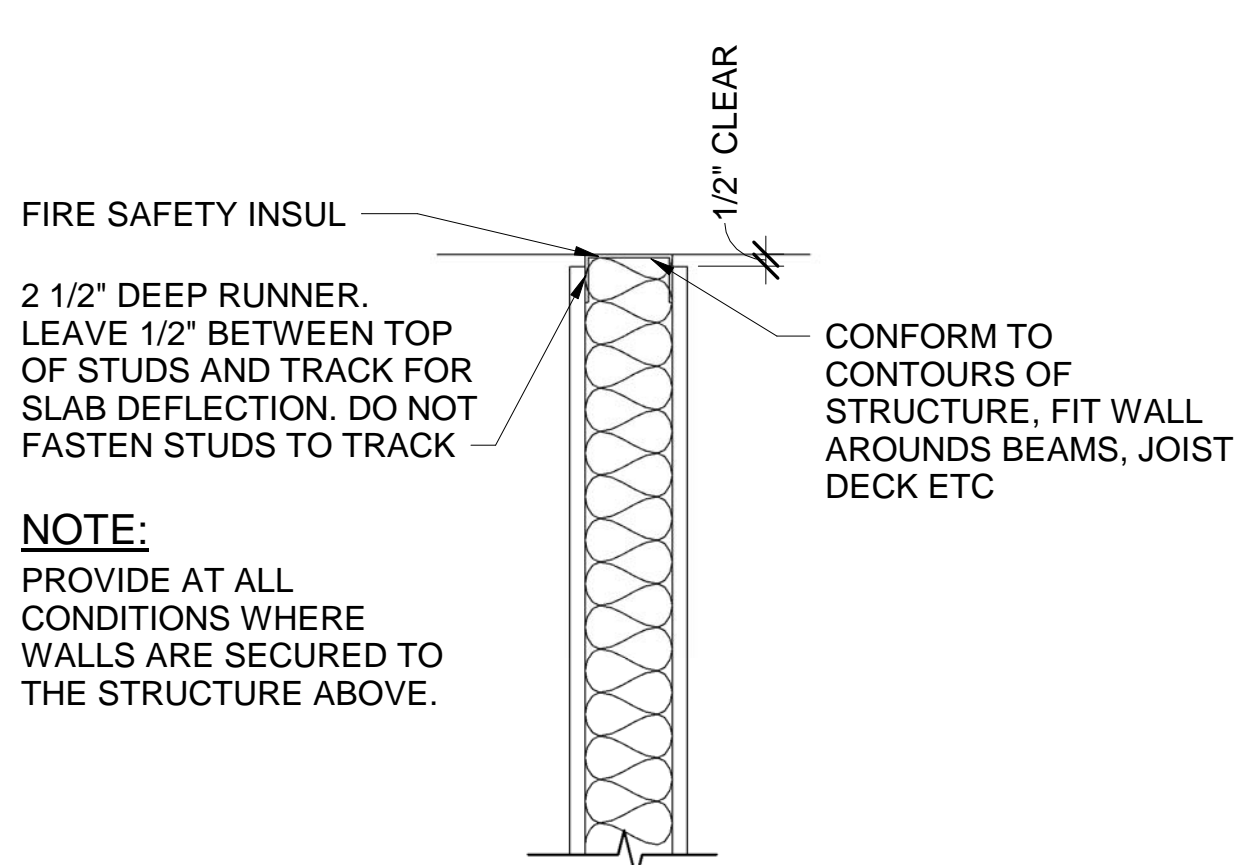
CMU WALL WITH FURRING AND GYP BD 1 HR RATED UL



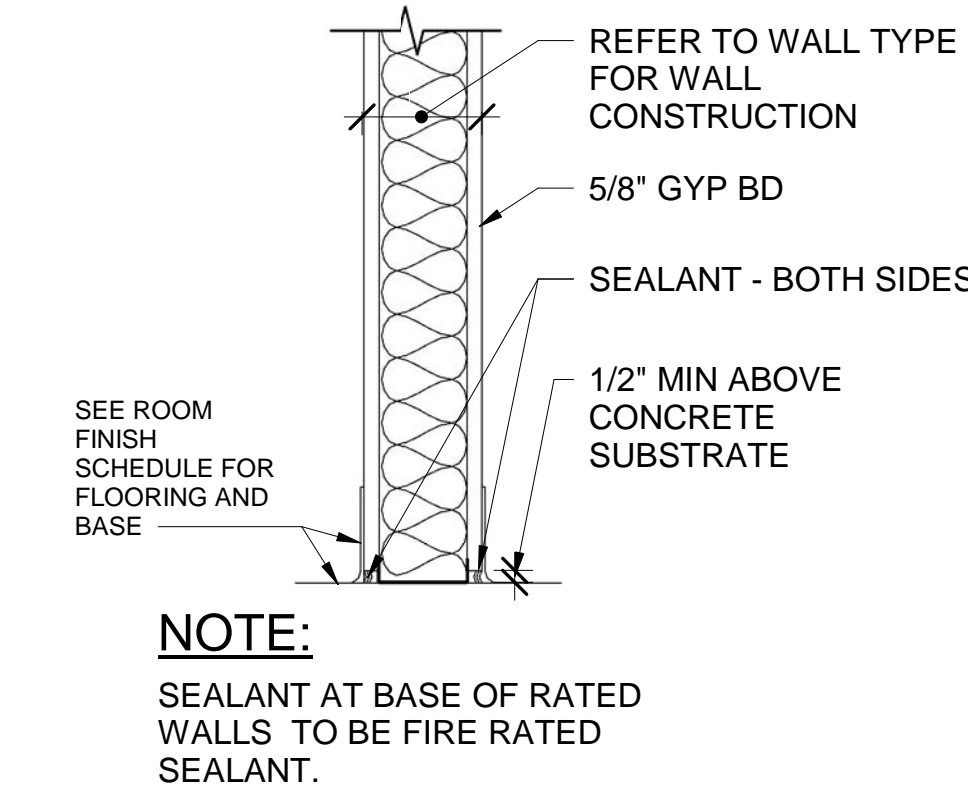
FIREWALL 3 HOUR RATED UL



FIREWALL W/ 1/2" RESILIENT 3 HOUR RATED UL



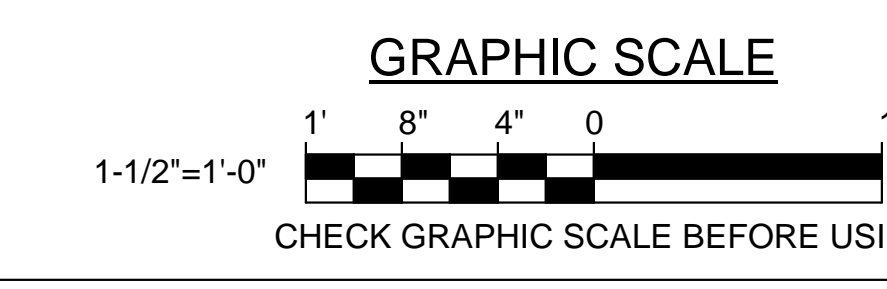
1 TYP DEFLECTION CHANNEL DETAIL AE003 AE003/ SCALE: 1 1/2" = 1'-0"



2 TYP GYP BD SILL DETAIL AE003 AE003/ SCALE: 1 1/2" = 1'-0"

GENERAL NOTES: (THIS SHEET ONLY)

- PROVIDE 5/8" ABUSE RESISTANT (V/HI) GYPSUM BOARD AT ALL EXPOSED CORRIDOR WALLS IN CORRIDORS A22, A16, A15, B13, B14, C17, D12 AND D28. TO 8'-0" MINIMUM ABOVE FINISH FLOOR AND AS INDICATED. ABUSE RESISTANT GYPSUM BOARD IS NOT REQUIRED BEHIND LOCKERS.
- SEE STRUCTURAL DRAWINGS FOR MASONRY WALL REINFORCING.
- SEE ROOM FINISH SCHEDULE AE640 FOR WALL FINISHES.
- GYPSUM BOARD WALLS WITH CERAMIC TILE FINISH SHALL HAVE 5/8" CEMENTITIOUS BACKER BOARD TO HEIGHT OF TILE. COORDINATE CERAMIC TILE WAINSCOTING WITH INTERIOR TOILET ELEVATIONS AND FINISH SCHEDULES.
- AT FIRE RESISTANT RATED ASSEMBLIES PROVIDE TESTED AND LISTED FIRESTOP SYSTEMS TO MAINTAIN THE INTEGRITY OF THE FIRE RESISTANT RATING. AREAS REQUIRING FIRESTOP SYSTEMS INCLUDE MEMBRANE PENETRATIONS, THROUGH PENETRATIONS, JOINTS BETWEEN ASSEMBLIES AND CONSTRUCTION JOINTS.
- AT SMOKE BARRIERS AND SMOKE PARTITIONS PROVIDE SEALANT TO MAINTAIN THE INTEGRITY OF THE SMOKE RESISTANCE OF THE ASSEMBLY. AREAS REQUIRING SEALANT INCLUDE MEMBRANE PENETRATIONS, THROUGH PENETRATIONS, JOINTS BETWEEN ASSEMBLIES AND CONSTRUCTION JOINTS.
- WHERE FLOORS INTERSECT EXTERIOR CURTAIN WALLS, PROVIDE A JOINT SYSTEM THAT IS CAPABLE OF LIMITING THE TRANSFER OF SMOKE.
- REFER TO SHEET AE520 FOR RATED WALL PENETRATION AND TOP OF WALL DETAILS.



STATE OF MAINE PUBLIC SCHOOL PROJECT  
TITLE: PORTLAND PUBLIC SCHOOLS NEW FRED P. HALL ELEMENTARY SCHOOL  
LOCATION: 23 ORONO ROAD, PORTLAND, ME  
DRAWN BY: DEM  
CHECK BY: TGB  
DATE: 03/17/17  
NO. DATE DESCRIPTION BY NO. REVISIONS

ROBERT C. TILLOSON ARCHITECT  
207-283-1110  
127 OF 312