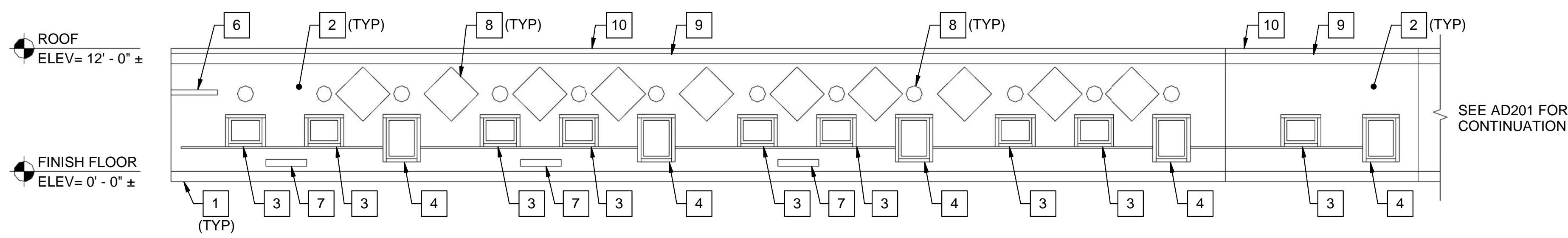


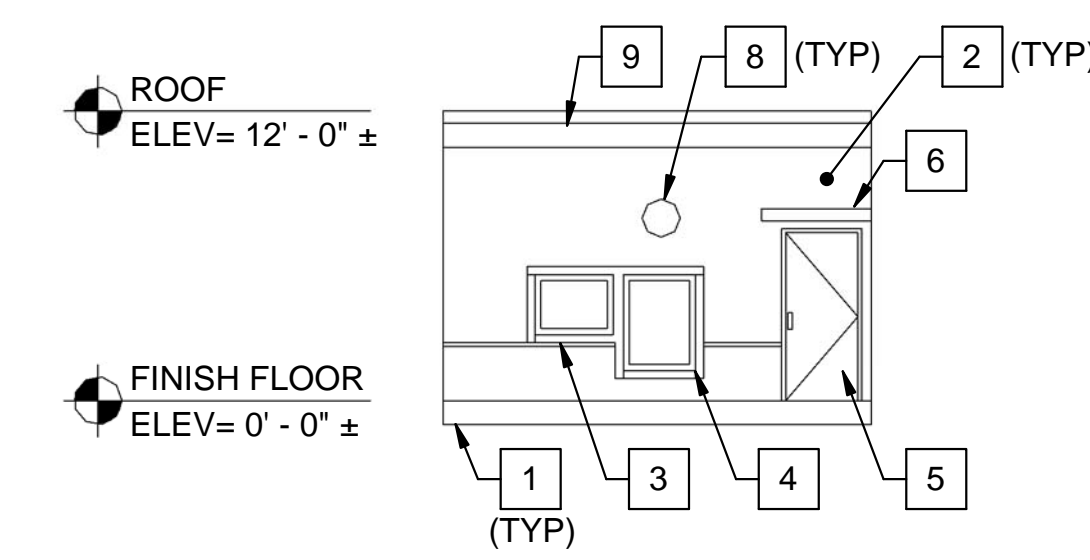
REMOVALS KEYNOTES: (SHEETS AD201, AD202 ONLY)

- 1 REMOVE 8"± THICK CONCRETE FOUNDATION WALL, 6"± CONCRETE FLOOR SLAB, AND 4'-0"± CRAWL SPACE WITH 2"± CONCRETE SLAB.
- 2 REMOVE 7"± THICK EXTERIOR WALL WOOD FRAMED WITH PLYWOOD SHEATHING AND REDWOOD SIDING.
- 3 REMOVE VINYL WINDOW.
- 4 REMOVE WOOD EGRESS WINDOW.
- 5 REMOVE WOOD DOOR, HOLLOW METAL FRAME, AND HARDWARE.
- 6 REMOVE WOOD FRAMED, METAL FLASHING, METAL ROOFING, METAL FASCIA CANOPY.
- 7 REMOVE LOUVER VENT.
- 8 REMOVE AND SALVAGE DECORATIVE PLATES AND RETURN TO BUILDING OWNER.
- 9 REMOVE METAL FLASHING AND PLYWOOD FASCIA.
- 10 REMOVE MEMBRANE ROOF AND INSULATION.



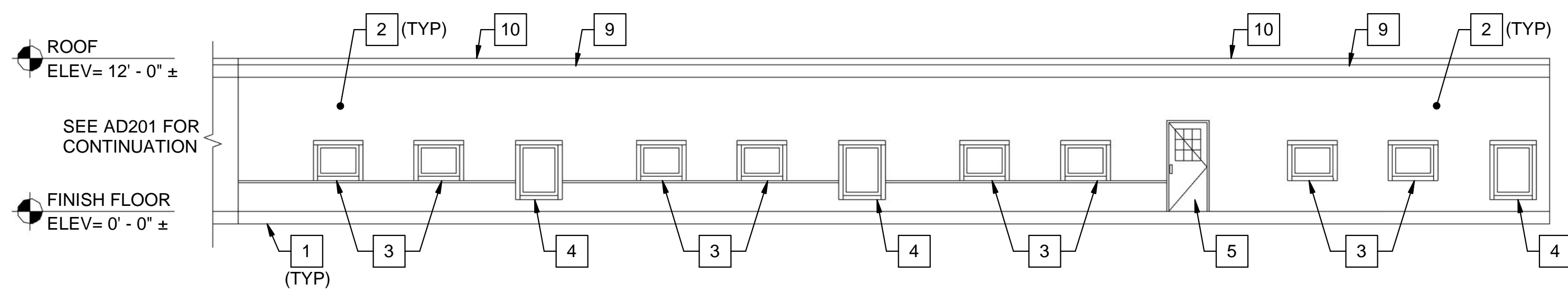
1 EXTERIOR WEST ELEVATION - PART B

AD103 AD202 SCALE: 1/8" = 1'-0"



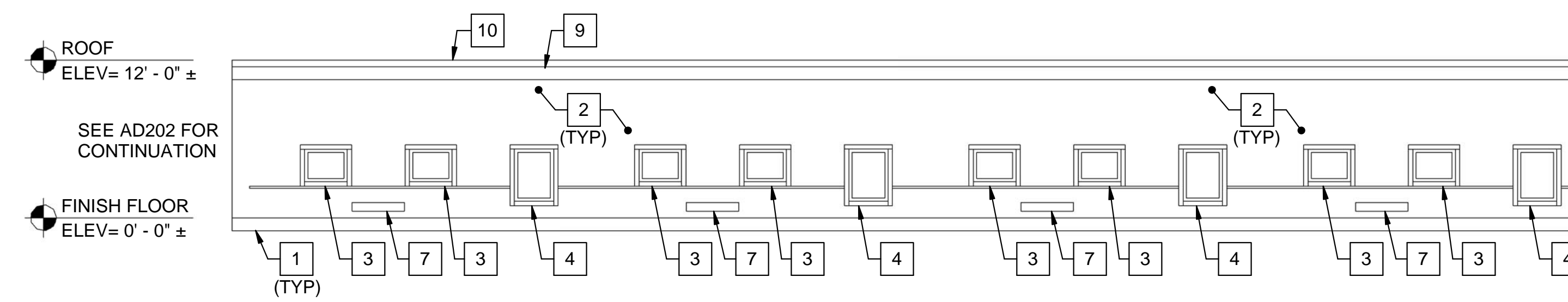
2 EXTERIOR NORTHWEST ELEVATION - PART B

AD103 AD202 SCALE: 1/8" = 1'-0"



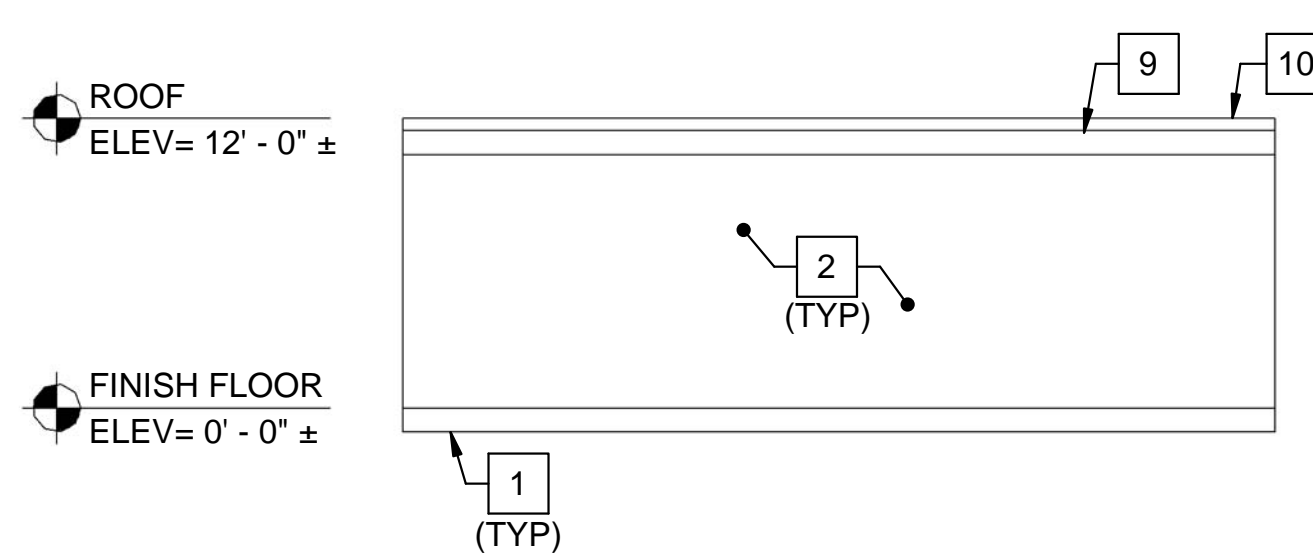
3 EXTERIOR EAST ELEVATION - PART B

AD103 AD202 SCALE: 1/8" = 1'-0"



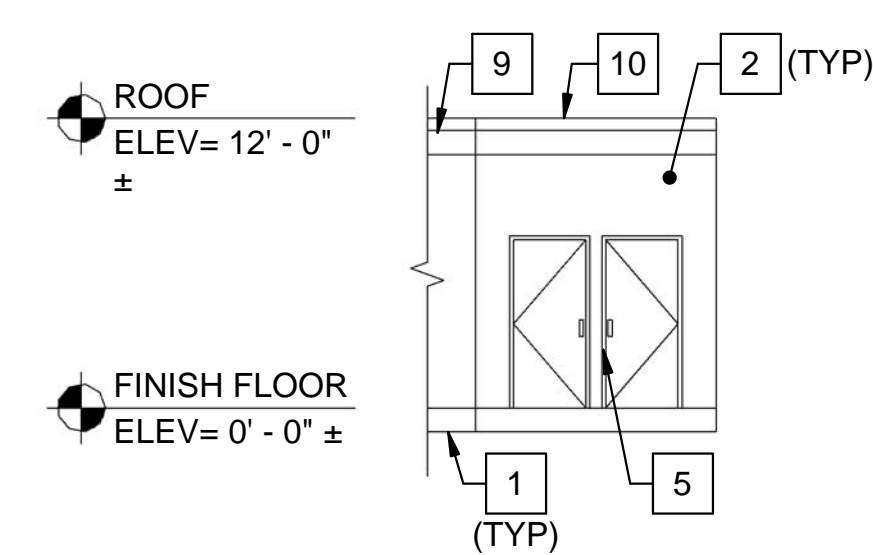
4 EXTERIOR NORTH ELEVATION - PART B

AD103 AD202 SCALE: 1/8" = 1'-0"



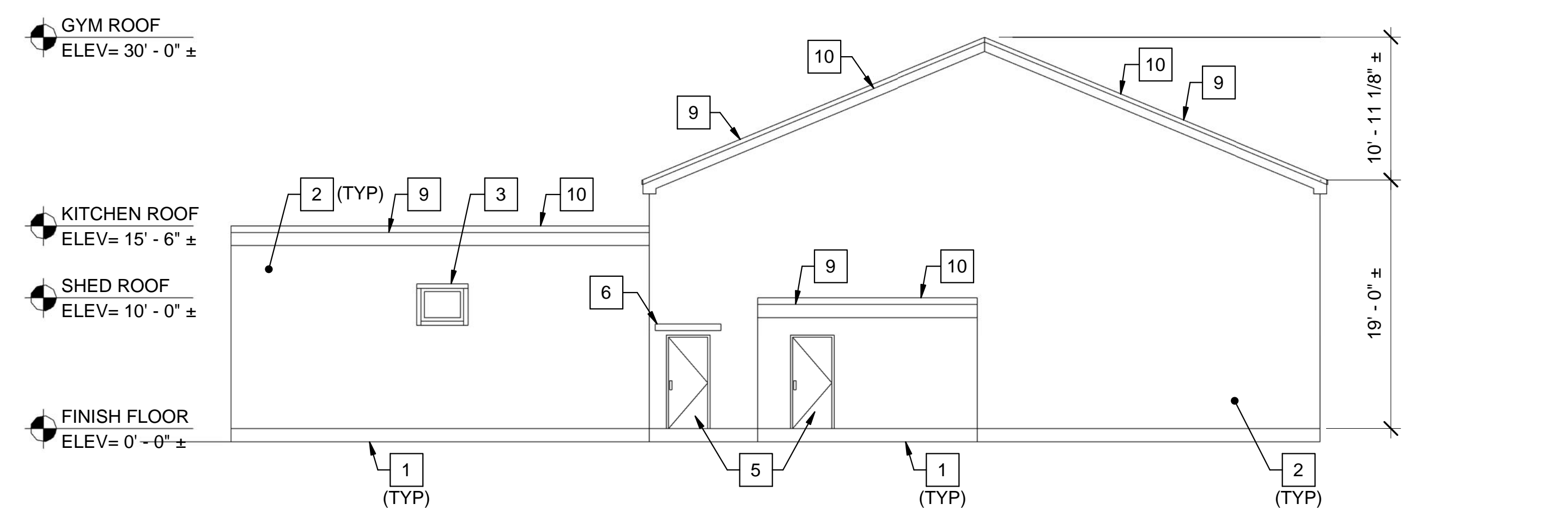
5 EXTERIOR EAST 2 ELEVATION - PART B

AD103 AD202 SCALE: 1/8" = 1'-0"



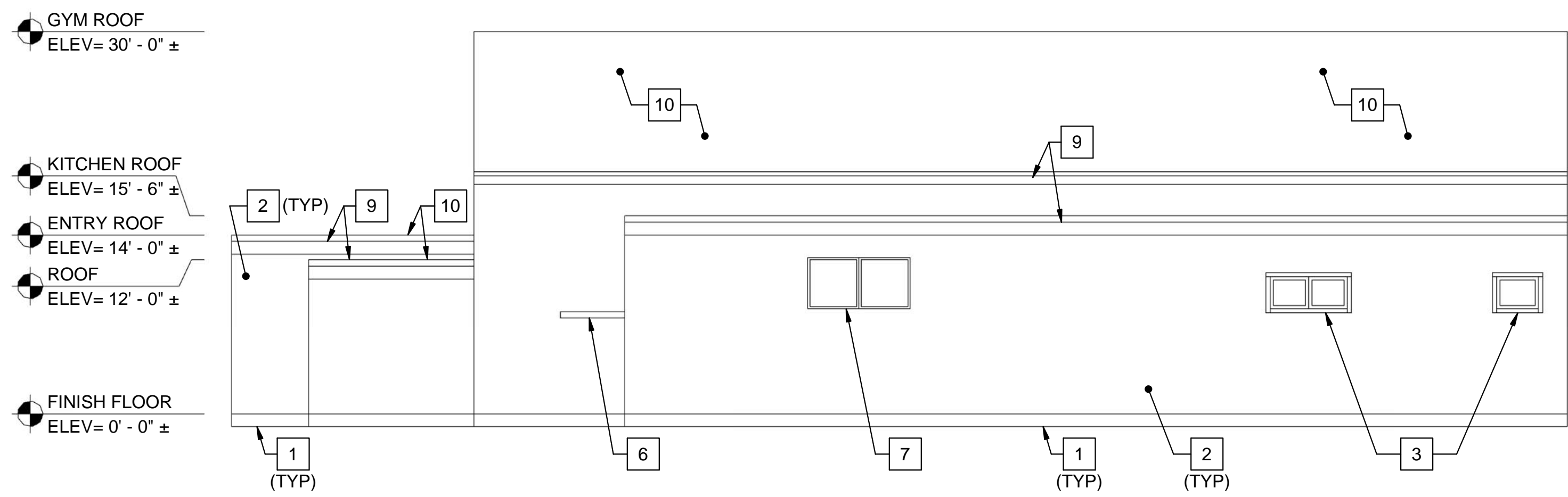
6 EXTERIOR NORTH 2 ELEVATION - PART B

AD103 AD202 SCALE: 1/8" = 1'-0"



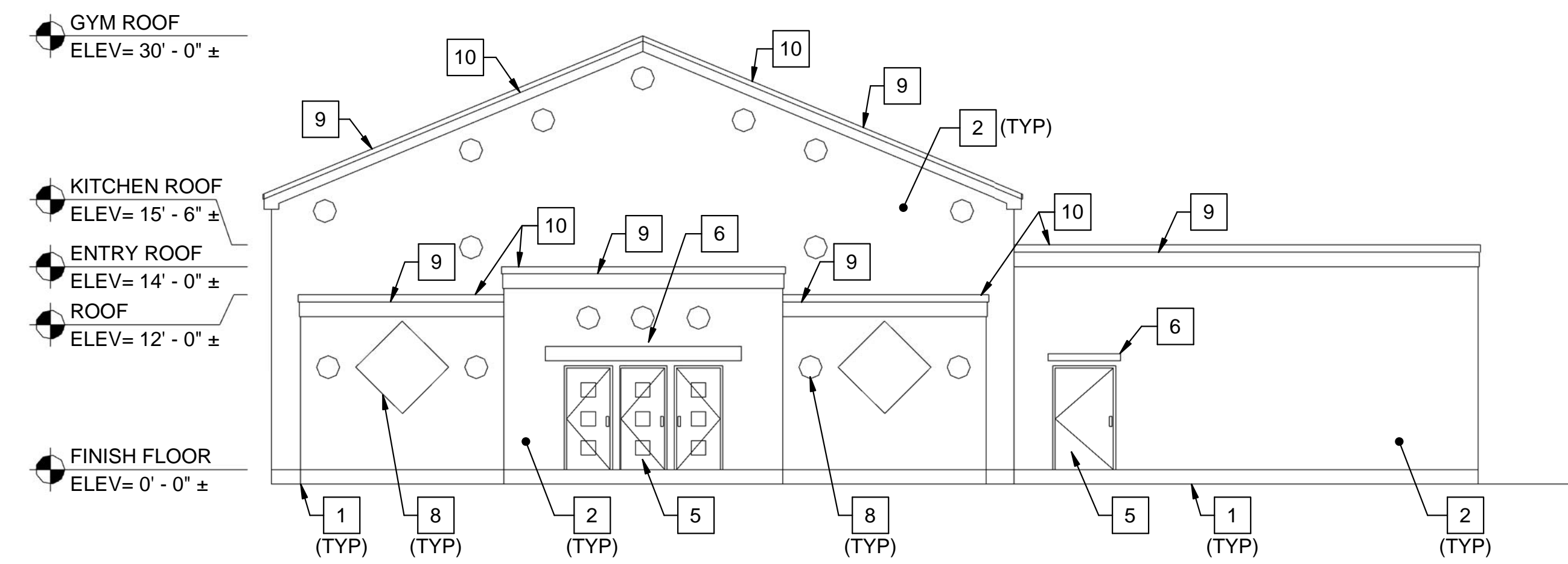
11 EXTERIOR NORTHWEST ELEVATION PART B

AD104 AD202 SCALE: 1/8" = 1'-0"



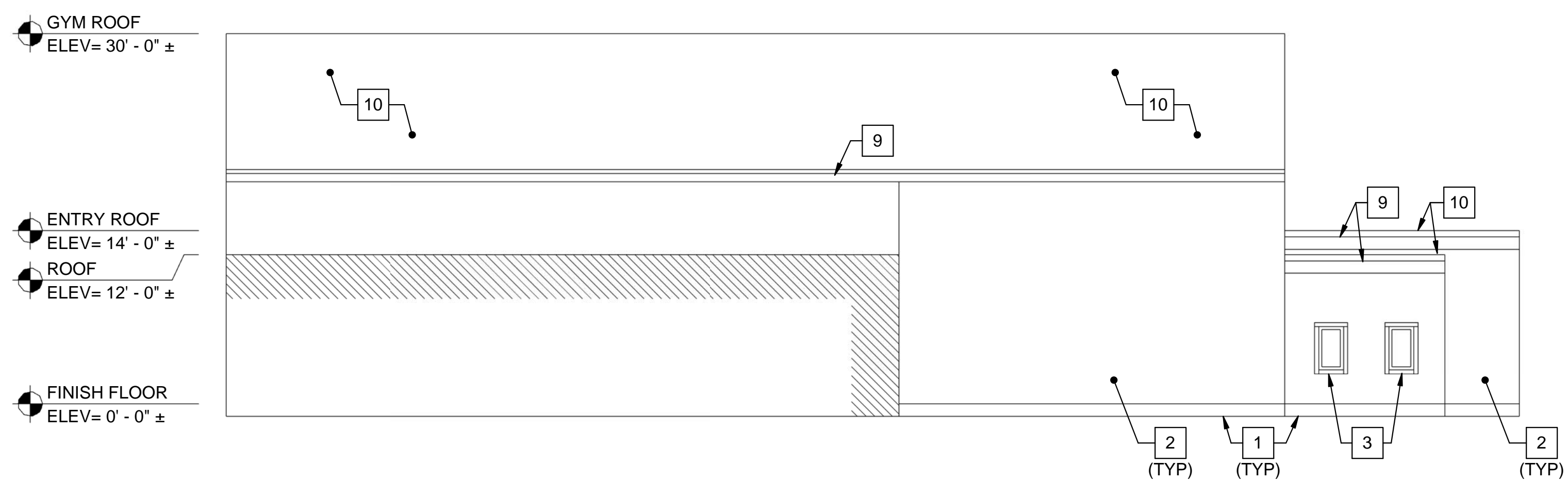
7 EXTERIOR NORTH ELEVATION - PART D

AD104 AD202 SCALE: 1/8" = 1'-0"



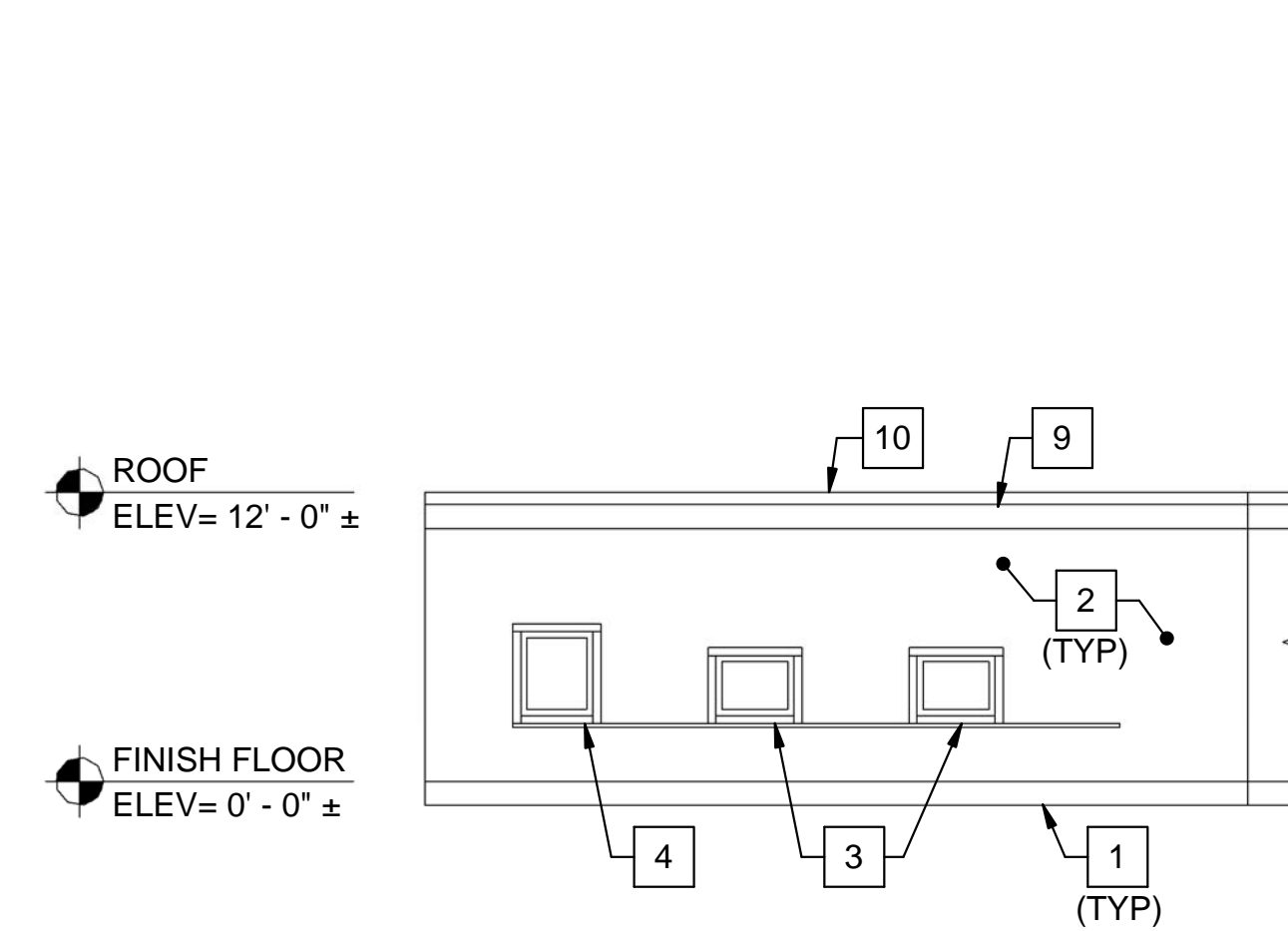
10 EXTERIOR WEST ELEVATION - PART D

AD104 AD202 SCALE: 1/8" = 1'-0"



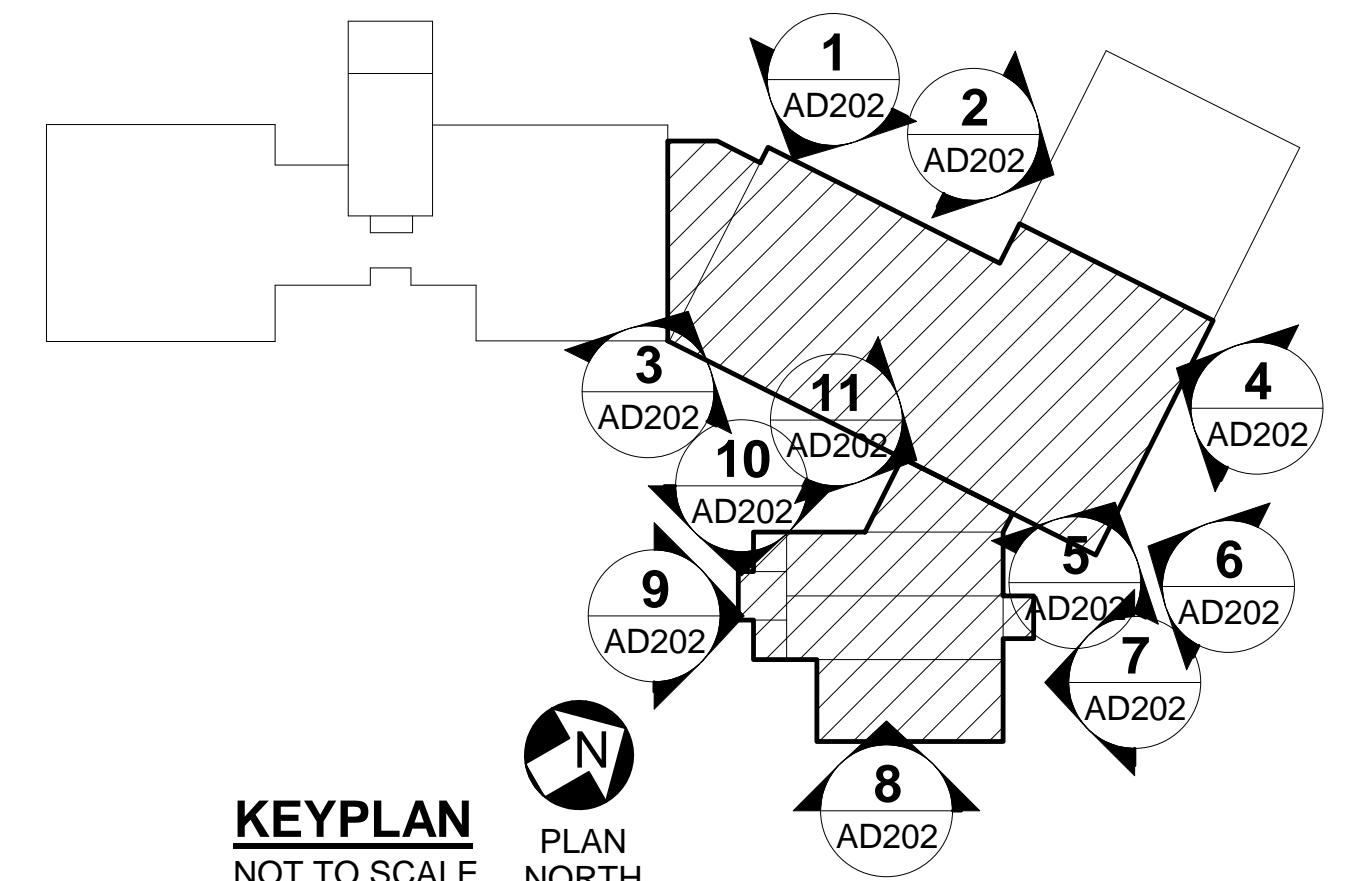
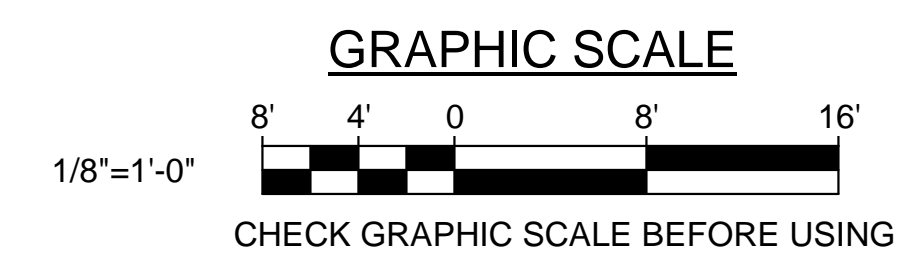
8 EXTERIOR EAST ELEVATION - PART D

AD104 AD202 SCALE: 1/8" = 1'-0"



9 EXTERIOR SOUTH 2 ELEVATION - PART D

AD104 AD202 SCALE: 1/8" = 1'-0"



		STATE OF MAINE PUBLIC SCHOOL PROJECT TITLE: PORTLAND PUBLIC SCHOOLS NEW FRED P. HALL ELEMENTARY SCHOOL LOCATION: 23 ORONO ROAD, PORTLAND, ME TITLE THIS DWG.: EXTERIOR ELEVATION REMOVALS	
DRAWN BY: DTC CHECK BY: TGB DATE: 03/17/17	NO. DATE DESCRIPTION BY NO. REVISIONS	OAK POINT ASSOCIATES 231 Main Street, Biddeford, Maine 04005 207.283.9192	DRAWING NO. AD202 SHEET NO. 20 OF 312