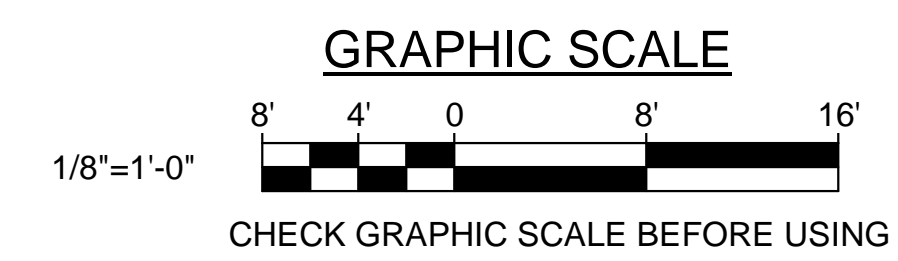
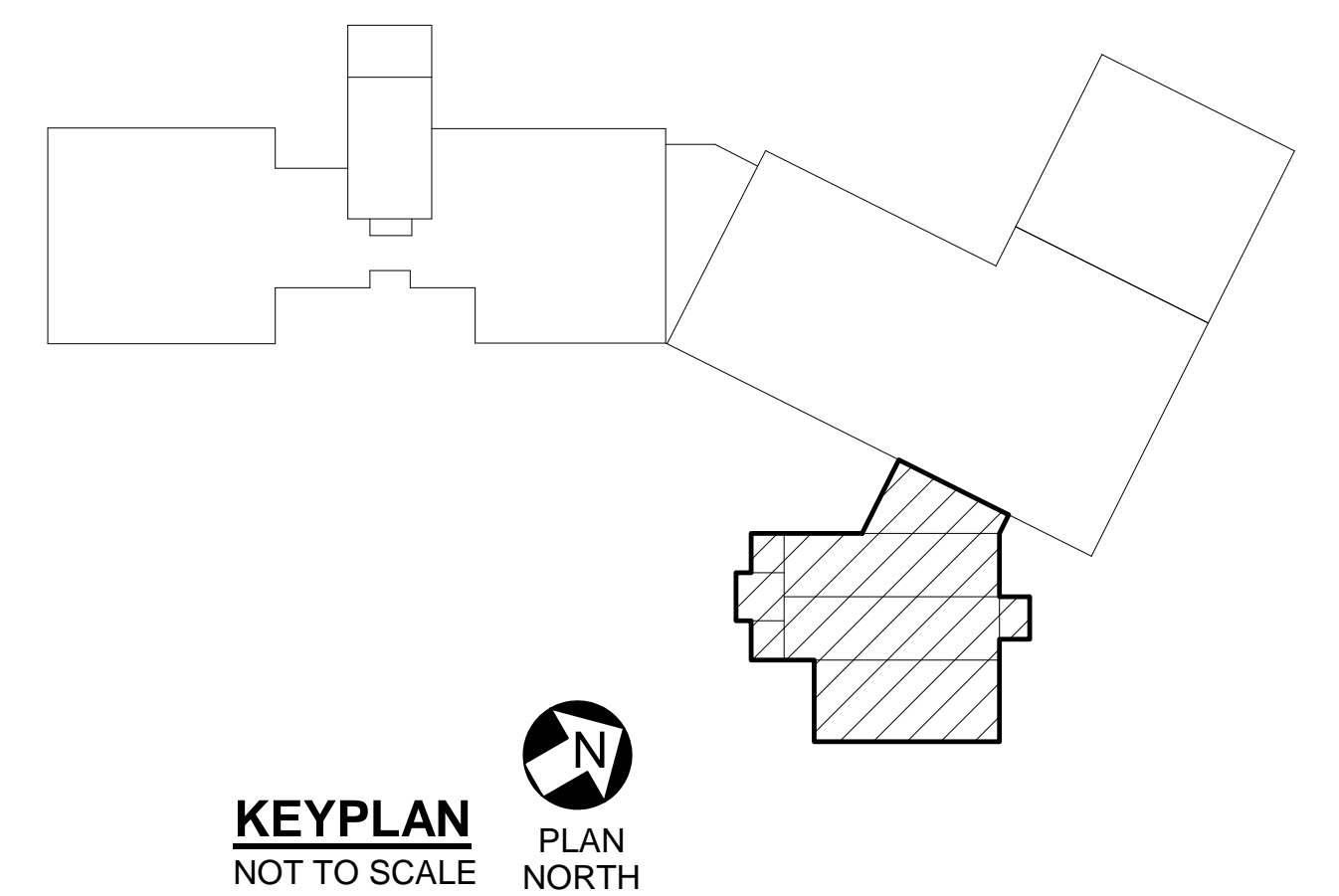


1 REMOVAL FLOOR PLAN - PART D
AD001 AD104 SCALE: 1/8" = 1'-0"



		STATE OF MAINE PUBLIC SCHOOL PROJECT TITLE: PORTLAND PUBLIC SCHOOLS NEW FRED P. HALL ELEMENTARY SCHOOL LOCATION: 23 ORONO ROAD, PORTLAND, ME TITLE THIS DWG.: REMOVAL FLOOR PLAN PART D	
DRAWN BY: DTC CHECK BY: TGB		DRAWING NO. AD104 SHEET NO. 17 OF 312	
NO.	DATE	DESCRIPTION	BY
		REVISIONS	
	03/17/17		