

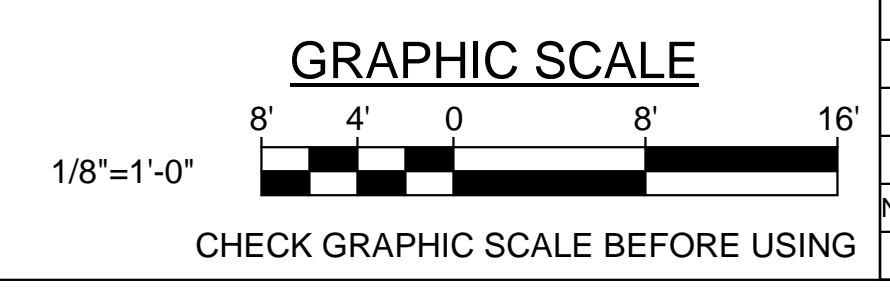


SEE SHEET AD102 FOR CONSTRUCTION

SEE SHEET AD101 FOR CONSTRUCTION

SEE SHEET AD104 FOR CONSTRUCTION

**1** REMOVAL FLOOR PLAN - PART B  
AD001 AD103 SCALE: 1/8" = 1'-0"



**KEYPLAN**  
NOT TO SCALE  
PLAN NORTH

		<b>STATE OF MAINE</b> <b>PUBLIC SCHOOL PROJECT</b> TITLE: PORTLAND PUBLIC SCHOOLS NEW FRED P. HALL ELEMENTARY SCHOOL LOCATION: 23 ORONO ROAD, PORTLAND, ME TITLE DWG: REMOVAL FLOOR PLAN PART B	
DRAWN BY: DTC CHECK BY: TGB	OAK POINT ASSOCIATES 231 Main Street, Biddeford, Maine 04005	DRAWING NO. <b>AD103</b> SHEET NO.	DATE: 03/17/17 16 OF 312