

SEE SHEET AD103 FOR CONSTRUCTION

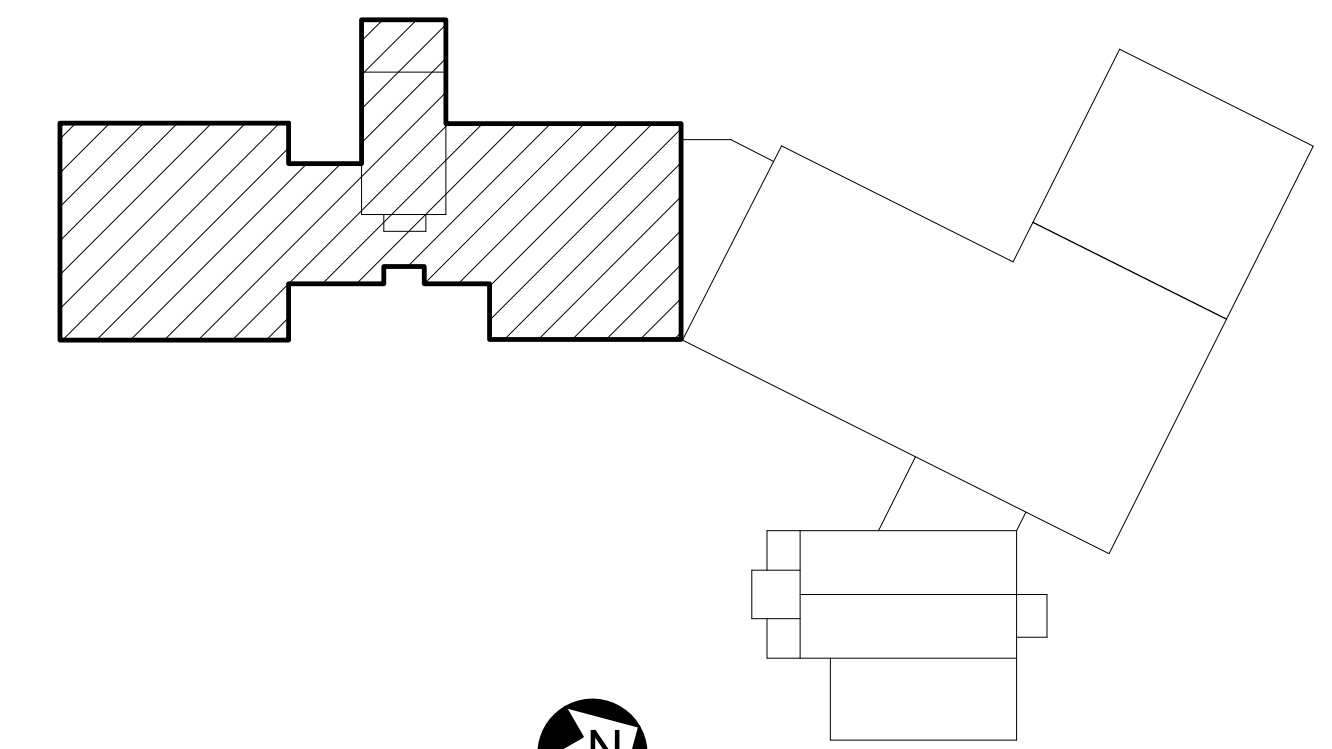
**1 REMOVAL FLOOR PLAN - PART A**  
SCALE: 1/8" = 1'-0"

REMOVALS KEYNOTES: (SHEETS AD101, AD102, AND AD103 ONLY)

- 1 REMOVE 8"± THICK CONCRETE FOUNDATION WALL, 6"± CONCRETE FLOOR SLAB, AND 4'-0"± CRAWL SPACE WITH 2"± CONCRETE SLAB.
- 2 REMOVE 7"± THICK EXTERIOR WALL WOOD FRAMED WITH PLYWOOD SHEATHING AND REDWOOD SIDING.
- 3 REMOVE VINYL WINDOW.
- 4 REMOVE WOOD EGRESS WINDOW.
- 5 REMOVE WOOD OR METAL DOOR, HOLLOW METAL FRAME, AND HARDWARE.
- 6 REMOVE PERFORATED FIBER CEILING TILE AND PLYWOOD ACCESS PANELS, EXPOSED SPRINKLER PIPING AND CEILING MOUNTED LIGHT FIXTURES.
- 7 REMOVE 2'-0" x 4'-0" ACOUSTICAL CEILING TILE, RECESSED LIGHT FIXTURES AND SPRINKLER PIPING.
- 8 REMOVE 9" x 9" ASPHALT TILE, COORDINATE WITH HAZARDOUS MATERIAL REPORT.
- 9 REMOVE TILE FLOORING.
- 10 REMOVE CARPET.
- 11 REMOVE VCT FLOORING.
- 12 REMOVE 3/8" PLYWOOD SHEATHING, BATTENS, AND DADO CAP.
- 13 REMOVE UNIT VENTILATOR.
- 14 REMOVE MOP SINK.
- 15 REMOVE 2'-8"± HIGH x 1'-3" DEEP 3/4" OAK PLYWOOD SHELF UNITS WITH VINYL COUNTERTOPS.
- 16 REMOVE 2'-0"± HIGH x 1'-0" DEEP 3/4" OAK PLYWOOD SHELF UNITS WITH VINYL COUNTERTOPS.
- 17 REMOVE 2'-0"± HIGH x 2'-2" DEEP 3/4" OAK PLYWOOD SHELF UNITS WITH VINYL COUNTERTOPS.
- 18 REMOVE 2'-8"± HIGH x 2'-2" DEEP 3/4" OAK PLYWOOD CABINET UNITS WITH VINYL COUNTERTOPS AND INTEGRAL SINK. DISCONNECT ASSOCIATED ELECTRICAL AND WATER UTILITIES.
- 19 REMOVE 4'-5"± HIGH x 1'-2"± DEEP 3/4" OAK PLYWOOD SHELF UNITS WITH INTEGRAL COAT HOOKS, SHELF, AND BENCH.
- 20 REMOVE 4'-8"± WIDE x 7'-2"± TALL x 2'-4"± DEEP SINK UNIT WITH 3/4" OAK PLYWOOD CABINETS, MARLITE CLAD 2-1/4" THICK WING WALLS, WITH VINYL COUNTERTOPS AND INTEGRAL SINK. DISCONNECT ASSOCIATED ELECTRICAL AND WATER UTILITIES.

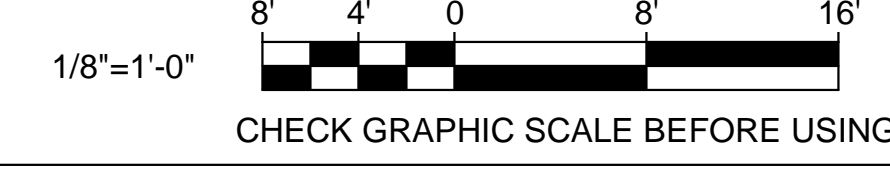
- 21 REMOVE 4'-8"± WIDE x 7'-2"± TALL x 2'-4"± DEEP CLOSET WITH 3/4" OAK PLYWOOD SHELVING AND CLOSET BAR.
- 22 REMOVE 10'-6"± WIDE x 1'-11"± TALL x 1'-3"± DEEP WARDROBE RACK WITH WOOD SHELVES, METAL BRACKETS, AND COAT HOOKS.
- 23 REMOVE 26'-0"± WIDE x 4'-0"± TALL WALL MOUNTED CHALKBOARD/TACK BOARD/WHITE BOARD WITH INTEGRAL MAP RAIL AND CHALK TRAY.
- 24 REMOVE 4'-0"± WIDE x 5'-6"± TALL x 2'-0"± DEEP WOOD FRAMED PLATE GLASS DISPLAY CABINET WITH GLASS SHELVES.
- 25 REMOVE PLUMBING FIXTURES AND TOILET ACCESSORIES (TOILETS, URINALS, SINKS, TOILET PARTITIONS, ETC.).
- 26 REMOVE KITCHEN EQUIPMENT AND COUNTERTOPS.
- 27 REMOVE MECHANICAL VENT.
- 28 REMOVE STRUCTURAL COLUMN.
- 29 REMOVE WOOD WALL MOUNTED BASKETBALL HOOPS AND ASSOCIATED EQUIPMENT (ROPES, NETS, PULL-UP BARS, ETC.).
- 30 REMOVE CEILING AND WALL MOUNTED ACOUSTICAL PANELS.
- 31 REMOVE 2'-0"± HIGH x 4'-1/4"± DEEP RADIATOR.
- 32 REMOVE 5"± THICK INTERIOR WALL WOOD FRAMED (2x4) WITH GYPSUM BOARD PARTITION.
- 33 REMOVE 8-1/2"± THICK WOOD FRAMED WITH STAGGERED WOOD STUDS (2x4 AND 2x6) ACOUSTICAL INSULATION, AND GYPSUM BOARD PARTITION.
- 34 REMOVE 6-1/2"± THICK INTERIOR WALL WOOD FRAMED (2x6) WITH ACOUSTICAL INSULATION AND GYPSUM BOARD.
- 35 REMOVE 8'-0"± WIDE x 4'-0"± HIGH COILING DOOR.
- 36 REMOVE WALL MOUNTED CABINETS.
- 37 REMOVE GYPSUM BOARD CEILING.
- 38 REMOVE INTERIOR WINDOW.

- 39 REMOVE 4"± x 4"± POWER POLE.
- 40 REMOVE LOCKERS.
- 41 REMOVE LADDER AND ATTIC HATCH.
- 42 REMOVE CABINETS WITH VINYL COUNTERTOPS.
- 43 REMOVE OAK PLYWOOD SHELVING.
- 44 REMOVE MEMBRANE ROOF AND INSULATION.
- 45 REMOVE WOOD ARCH STRUCTURE AND WOOD PLANK CEILING.
- 46 REMOVE WALL MOUNTED BOOK SHELF.
- 47 REMOVE MECHANICAL AND ELECTRICAL EQUIPMENT.
- 48 REMOVE LIBRARY CIRCULATION DESK.
- 49 REMOVE FIRE EXTINGUISHERS AND FIRE EXTINGUISHER CABINETS.
- 50 REMOVE 8" BLOCK WALL.
- 51 REMOVE ROLLING DOOR, TRACK, AND HARDWARE.
- 52 REMOVE METAL SHELVING.
- 53 REMOVE BUILT-IN FISH TANK SUPPORTS AND ASSOCIATED CABINETS.
- 54 REMOVE INFILL.
- 55 REMOVE WHITEBOARD AND TACKBOARD.
- 56 REMOVE CONCRETE STOOP.
- 57 REMOVE STAIRS.
- 58 REMOVE OPERABLE PARTITION.



KEYPLAN  
NOT TO SCALE  
PLAN NORTH

GRAPHIC SCALE  
1/8"=1'-0"



		<p>STATE OF MAINE <b>PUBLIC SCHOOL PROJECT</b> TITLE: PORTLAND PUBLIC SCHOOLS NEW FRED P. HALL ELEMENTARY SCHOOL LOCATION: 23 ORONO ROAD, PORTLAND, ME TITLE THIS DWG: REMOVAL FLOOR PLAN PART A</p>
<p>DRAWN BY: DTC CHECK BY: TGB</p>	<p>DATE: 03/17/17</p>	<p>OAK POINT ASSOCIATES DRAWING NO. AD102 SHEET NO. 15 OF 312</p>