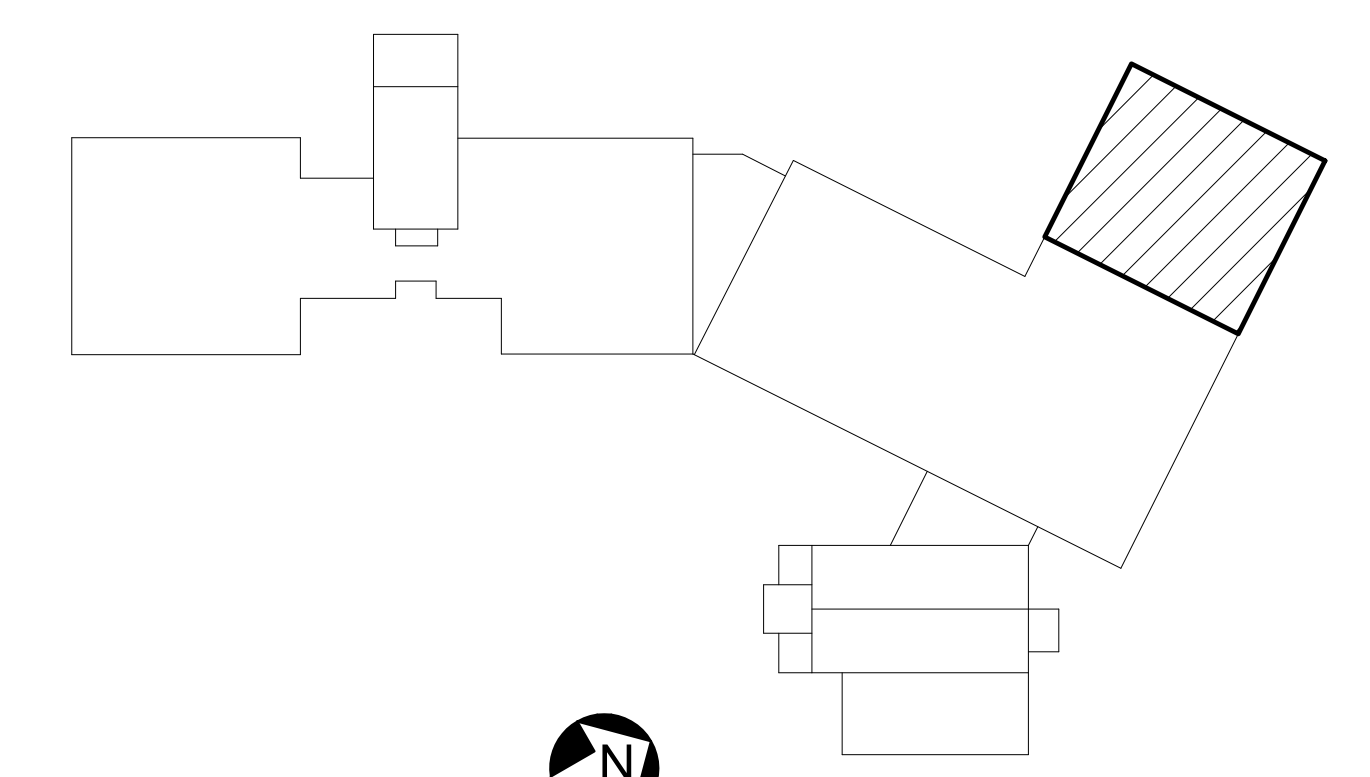
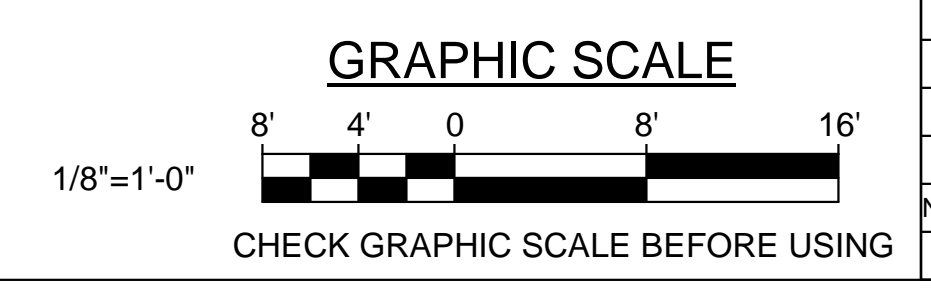


1 REMOVAL FLOOR PLAN - PART C
AD001 AD101 SCALE: 1/8" = 1'-0"



KEYPLAN
NOT TO SCALE

PLAN NORTH



		STATE OF MAINE PUBLIC SCHOOL PROJECT	
		TITLE: PORTLAND PUBLIC SCHOOLS NEW FRED P. HALL ELEMENTARY SCHOOL LOCATION: 23 ORONO ROAD, PORTLAND, ME TITLE THIS DWG.: PHASE 1 REMOVAL FLOOR PLAN PART C	
DRAWN BY: DTC CHECK BY: TGB	DATE: 03/17/17	DRAWING NO.: SHEET NO.:	OAK POINT ASSOCIATES 231 Main Street, Biddeford, Maine 04005 207.283.9192
NO. DATE DESCRIPTION BY NO.	REVISIONS	14 OF 312	