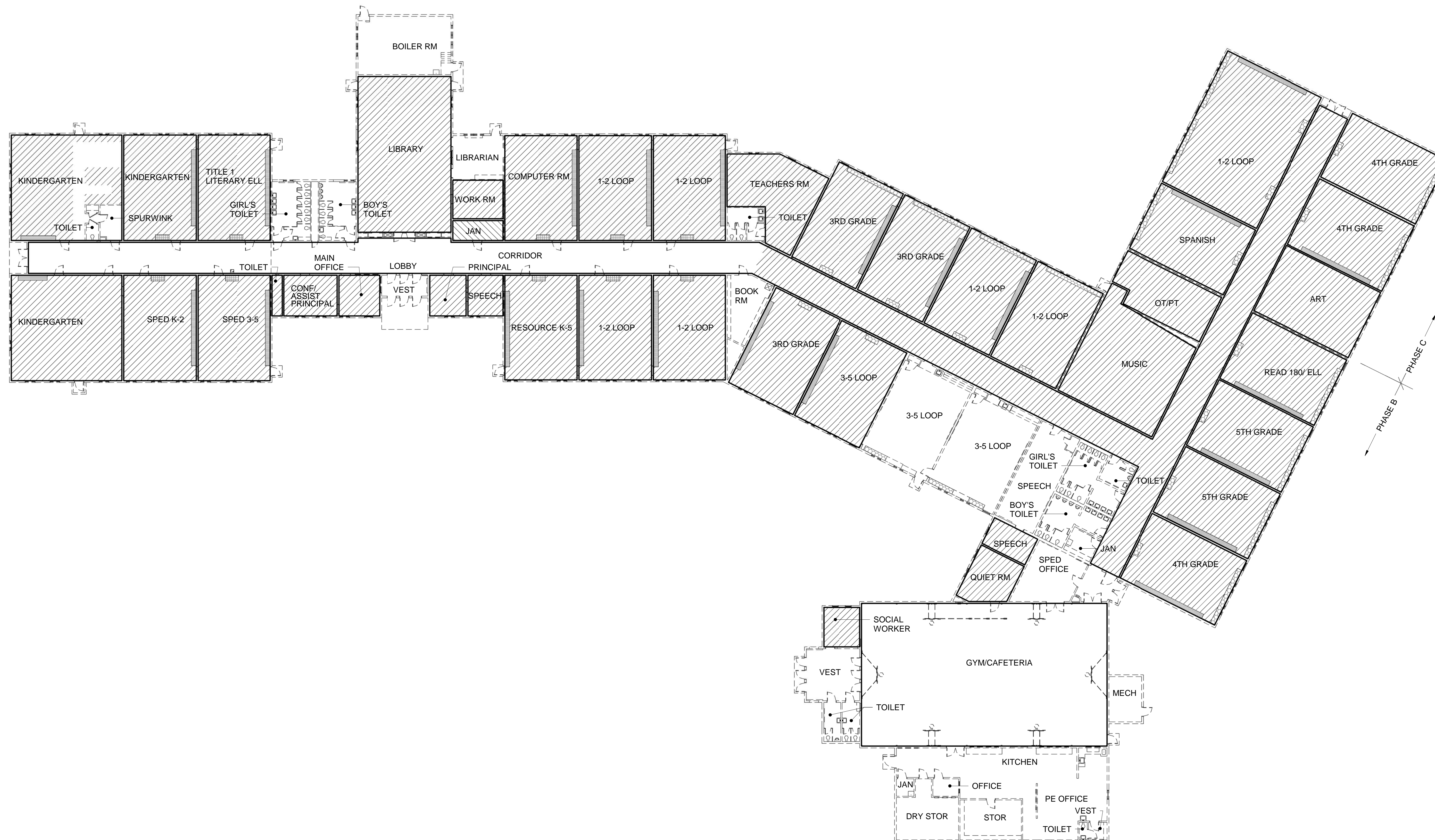


GENERAL NOTES: (FOR SHEETS AD002 - AD004)

1. THIS PROJECT IS NOT CONSIDERED AN AHERA RESPONSE ACTION. ALL WORK WILL BE PERFORMED IN ACCORDANCE WITH MAINE DEPARTMENT OF ENVIRONMENTAL PROTECTION (MEDEP) AND UNITED STATES ENVIRONMENTAL PROTECTION AGENCY (USEPA) RULES AND REGULATIONS.
2. GENERAL CONTRACTOR TO COORDINATE ASBESTOS ABATEMENT & REMOVALS WITH GENERAL DEMOLITION REMOVALS PRIOR TO IMPACT OF ANY BUILDING MATERIALS; E.G. REMOVAL OF CARPET OVER ACM FLOOR TILE. NON-ACM BUILDING MATERIALS CONNECTED AND/OR FASTENED TO ACM'S SHOULD REMAIN IN PLACE UNTIL REMOVED AS AN ASBESTOS ABATEMENT ACTIVITY.
3. CONTRACTOR SHALL VERIFY ACTUAL QUANTITIES AND LOCATIONS. THE LOCATIONS ARE APPROXIMATE AND SOME MATERIALS MAY NOT BE ACCESSIBLE WITHOUT PERFORMING DESTRUCTIVE INSPECTION TECHNIQUES, E.G., ABOVE CEILINGS, TRENCHES, ETC.

HAZARDOUS MATERIAL LEGEND

- ASBESTOS BROWN GLUE BAUBS ON NON-ASBESTOS 1' X 1' INTERLOCKING CEILING TILES (APPROX. 31,500 SQ.FT.)
- ASBESTOS 9" x 9" FLOOR TILE AS BASE FLOORING LAYER (APPROX. 32,250 SQ.FT.)
- ASBESTOS 12" x 12" FLOOR TILE AS BASE FLOORING LAYER (APPROX. 250 SQ.FT.)
- ASBESTOS BROWN COVE BASE ADHESIVE (APPROX. 1,250 SQ.FT.)
- AREAS WITH CLUSTERED ASBESTOS MUDDED FITTINGS (APPROX. 42 FITTINGS)
- AREAS WITH PIPE INSULATIONS AND MUDDED FITTINGS (APPROX. 110 LF)
- ASBESTOS CONTAINING PIPE INSULATION ON PIPES ASSOCIATED WITH HEATING
- ASBESTOS CONTAINING PIPE INSULATION ON PIPES ASSOCIATED WITH DOMESTIC WATER
- ASBESTOS TRANSITE CHALKBOARDS (APPROX. 1,600 SQ.FT.)
- ASBESTOS GRAY LINOLEUM USED ON COUNTERTOPS (APPROX. 50 SQ.FT.)
- ASBESTOS PEBBLE PATTERN SHEET FLOOR USED ON COUNTERTOPS (APPROX. 250 SQ.FT.)



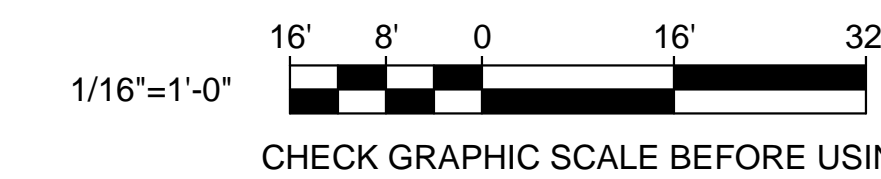
1 ENVIRONMENTAL FIRST FLOOR REMOVALS PLAN
AD002 SCALE: 1/16" = 1'-0"



KEY NOTES:

- 1 REMOVE NON-ACM TILE & ADHESIVE, PLYWOOD UNDERLAYMENT, AND ACM FLOOR TILE & ADHESIVE (COMPLETE) AS AN ASBESTOS ABATEMENT ACTIVITY. NOTE: ACM ADHESIVE (BLACK) TO BE REMOVED USING CHEMICAL METHODS.
- 2 REMOVE ACM FLOOR TILE AND ADHESIVE (COMPLETE) AS AN ASBESTOS ABATEMENT ACTIVITY. NOTE: ACM ADHESIVE (BLACK) TO BE REMOVED USING CHEMICAL METHODS.
- 3 REMOVE ACM GASKETS BETWEEN OLD BOILER SECTIONS AND BREECHING REMOVE ACM GASKETS BETWEEN OLD BOILER SECTIONS AND BREECHING CONNECTIONS AS AN ASBESTOS ABATEMENT ACTIVITY. NOTE: THE FOLLOWING INSULATIONS IN THE BOILER ROOM ARE CONSIDERED NON-ACM: BREACHING INSULATION - NO ASBESTOS DETECTED (NAD); BOILER CEMENT - <1% ASBESTOS; AND PIPE FITTING MUD INSULATION - NAD.
- 4 REMOVE SECTION OF OLDER ACM PIPE INSULATION AND DEBRIS IN CRAWL SPACE AS A NONFRIABLE, WHOLE-COMPONENT ASBESTOS ABATEMENT ACTIVITY. NOTE: APPEARS TO BE REMAINING FROM A PREVIOUS HEATING SYSTEM RENOVATION.
- 5 REMOVE OLDER ACM PIPE INSULATION (IF ANY) LOCATED IN CRAWLSPACE AS A WHOLE COMPONENT, NONFRIABLE ASBESTOS ABATEMENT ACTIVITY. NOTE: CRAWLSPACE INACCESSIBLE DURING SITE INSPECTION.
- 6 CLEAN AND REMOVE OIL FROM UNDERGROUND STORAGE TANK, ASSOCIATED PIPING AND BOILER BURNER IN ACCORDANCE WITH MAINE DEP REGULATIONS.
- 7 CLEAN AND REMOVE OIL FROM ABOVE-GROUND STORAGE TANK, ASSOCIATED PIPING AND BOILER BURNER IN ACCORDANCE WITH MAINE DEP REGULATIONS.

GRAPHIC SCALE



		STATE OF MAINE PUBLIC SCHOOL PROJECT	
		TITLE: PORTLAND PUBLIC SCHOOLS NEW FRED P. HALL ELEMENTARY SCHOOL LOCATION: 23 ORONO ROAD, PORTLAND, ME TITLE THIS DWG: ENVIRONMENTAL FIRST FLOOR REMOVALS PLAN	
DRAWN BY: CET CHECK BY: TGB	DATE: 03/17/17	DRAWING NO: AD002	SHEET NO: 11 OF 312
NO. DATE DESCRIPTION BY		REVISIONS	