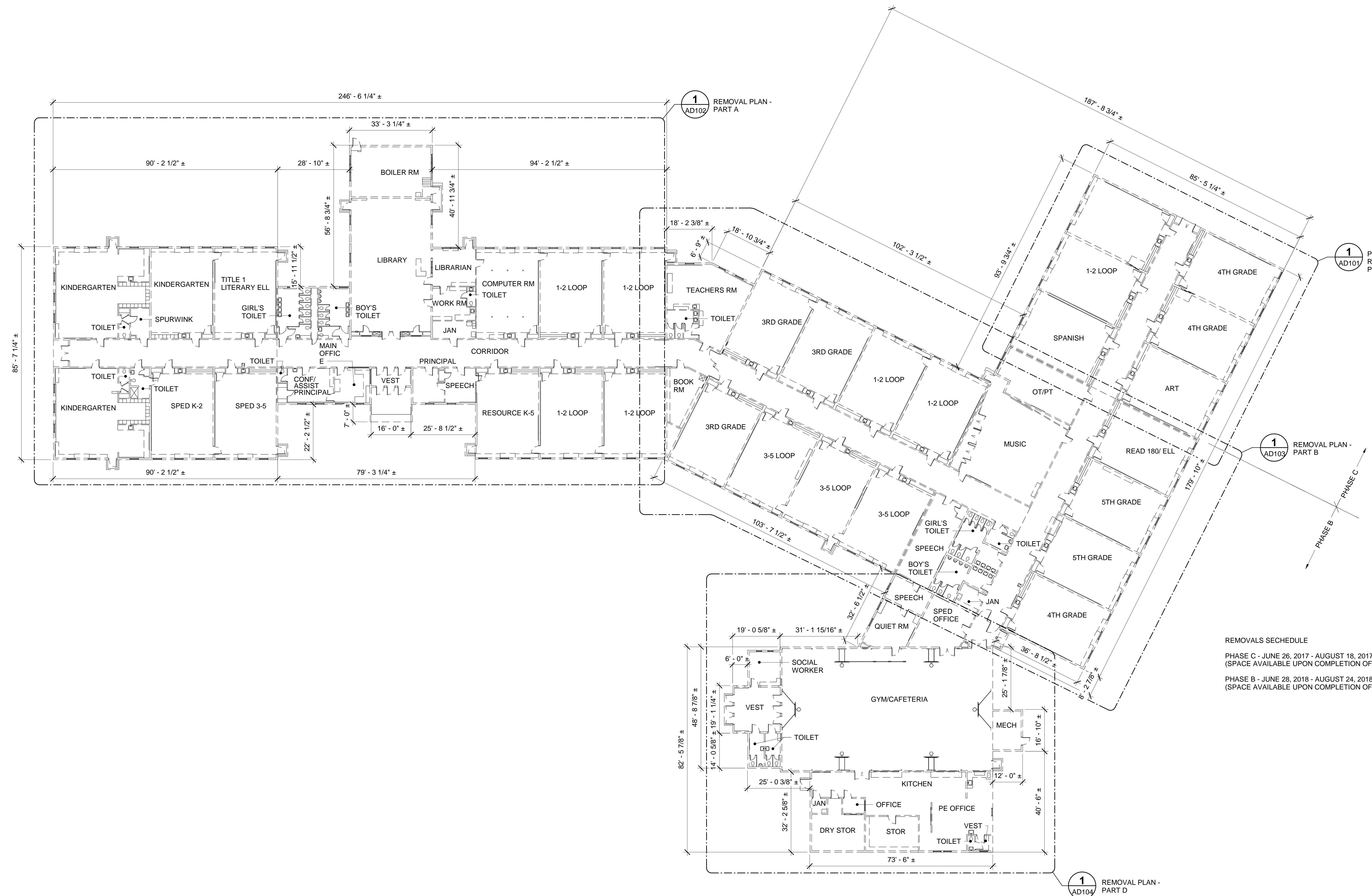
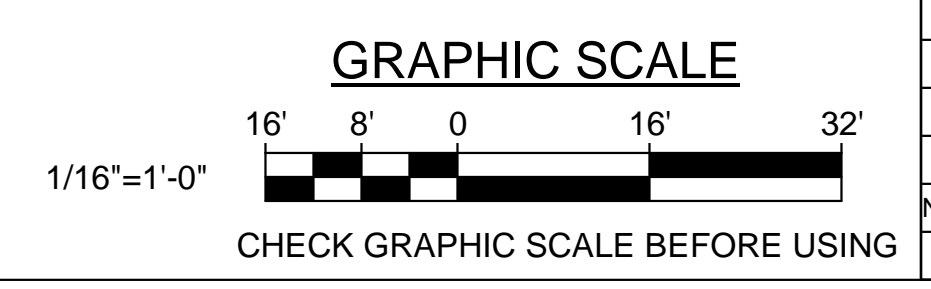


DRAWING NOTES:
 1. SEE AT101 FOR PHASE 1 TEMPORARY EXTERIOR WALL PLANS AND DETAILS.



REMOVALS SCHEDULE
 PHASE C - JUNE 26, 2017 - AUGUST 18, 2017
 (SPACE AVAILABLE UPON COMPLETION OF SCHOOL YEAR)
 PHASE B - JUNE 28, 2018 - AUGUST 24, 2018
 (SPACE AVAILABLE UPON COMPLETION OF SCHOOL YEAR)

1 REMOVAL REFERENCE PLAN
 AD001 SCALE: 1/16" = 1'-0"
 PLAN NORTH



		STATE OF MAINE PUBLIC SCHOOL PROJECT TITLE: PORTLAND PUBLIC SCHOOLS NEW FRED P. HALL ELEMENTARY SCHOOL LOCATION: 23 ORONO ROAD, PORTLAND, ME TITLE THIS DWG.: REMOVAL REFERENCE PLAN	
		DRAWN BY: JGB CHECK BY: TGB	OAK POINT ASSOCIATES 231 Main Street, Biddeford, Maine 04005 207.283.9192
NO. DATE	DESCRIPTION	BY	DATE
	REVISIONS		03/17/17