

Pressure Treated

Walls

- 86 - 8' 2x4"
- 3 - 10' 2x4"
- 3 - 12' 2x4"
- 7 - 10' 2x6"
- 6 - 8' 2x6"

ROOF

- 18 - 10' 2x6"
- 10 - 8' 2x6"
- 10 - 8' 1x8"

1 9/16

- FLOOR
- 2 - 12' 2x10"
- 2 - 10' 2x10"
- 2 - 12' 2x8"
- 12 - 10' 2x8"
- 5 - 8' 2x8"

4 - Sheets Plywood 4x8'
5/8" or 3/4"
4x8' Sheets

Andors - ?

9 - J-Bolts

9 - Bolts

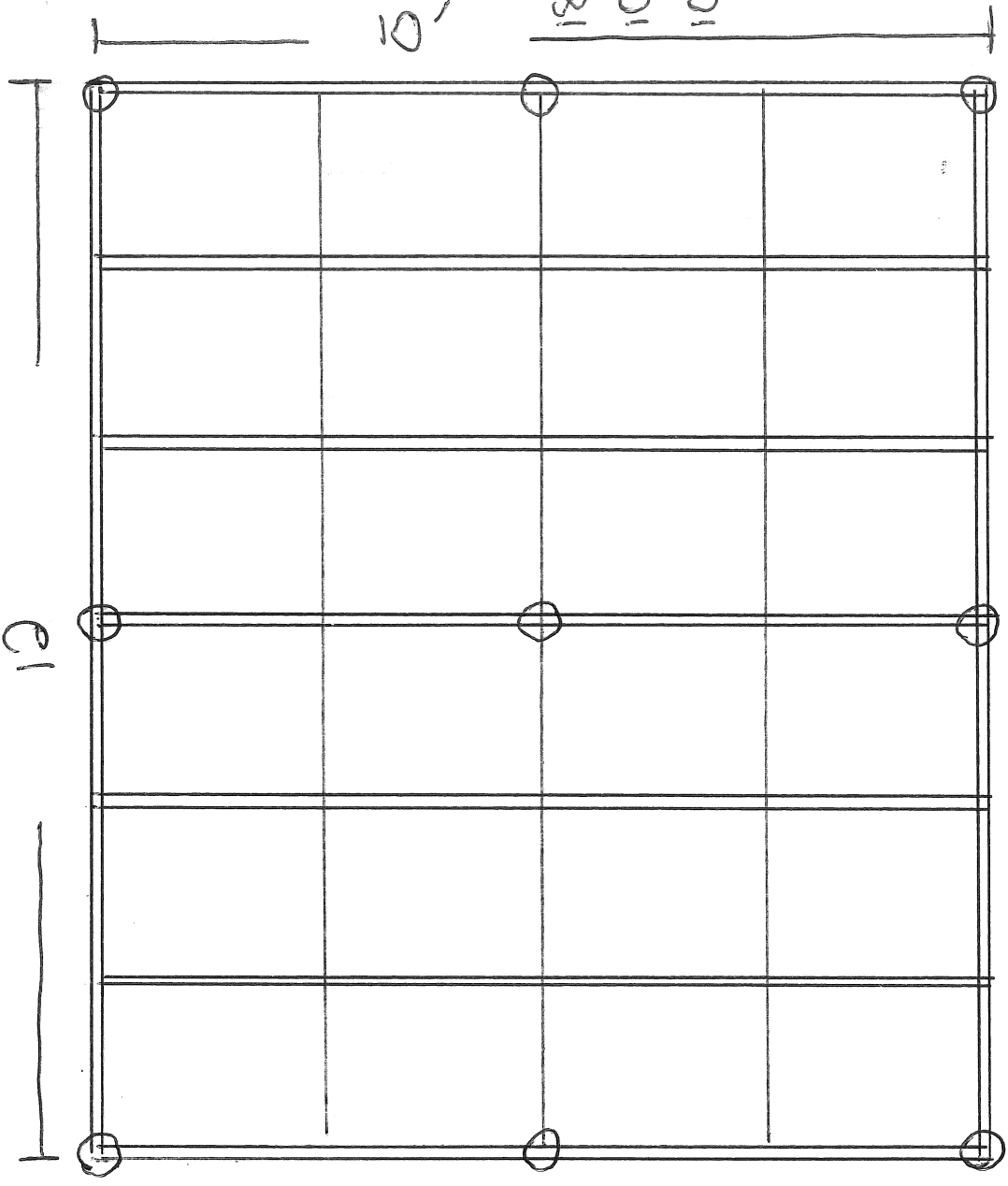
- Old Plywood
- 12 - 1/4" 4x8'
- 9 - 1/2" 4x8'

2 - 3/4"

Windows

Diamond - 33 3/4 x 40 3/8

Double Hung - 53 x 30 3/4



FLOOR PLAN