

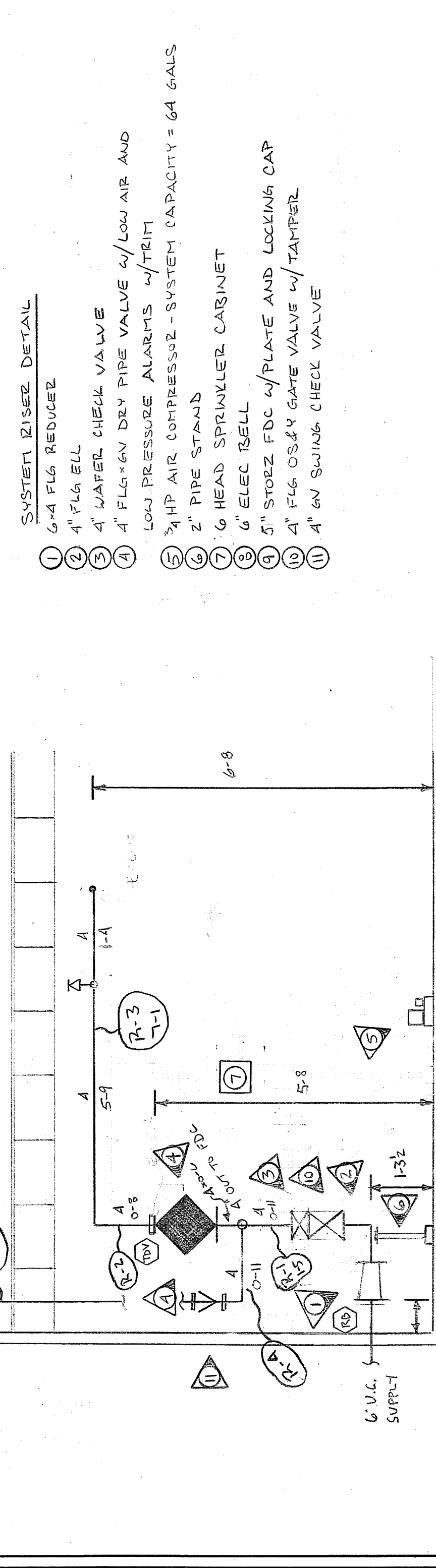
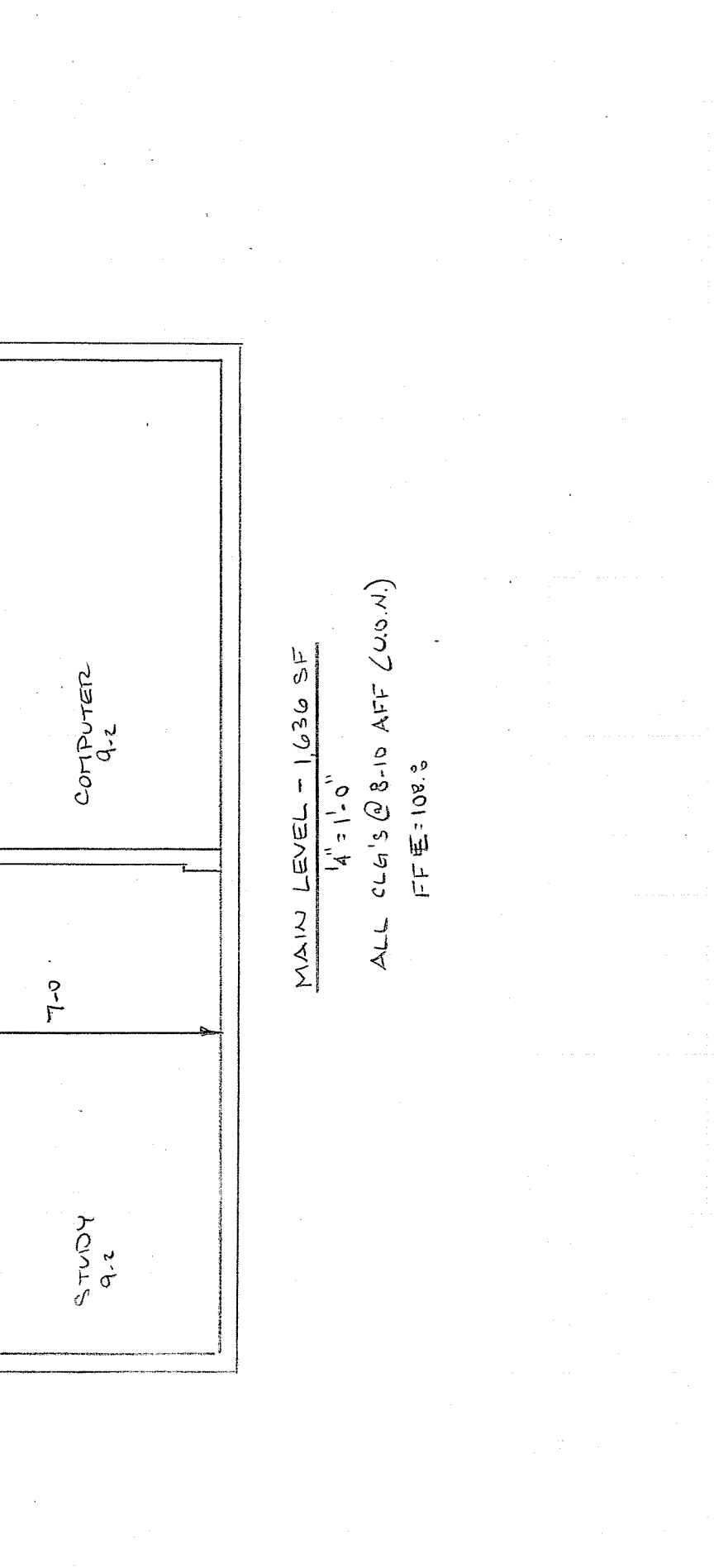
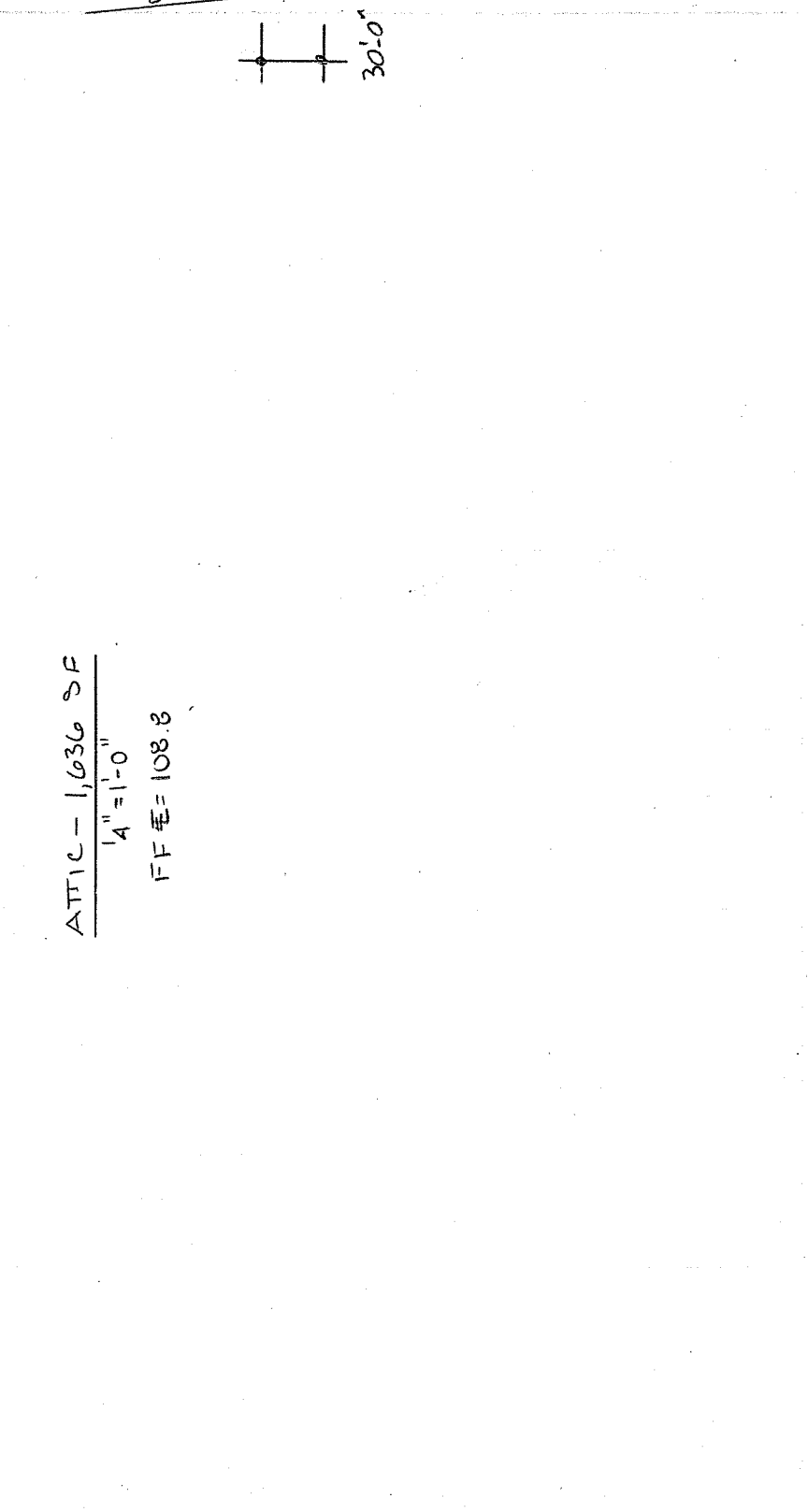
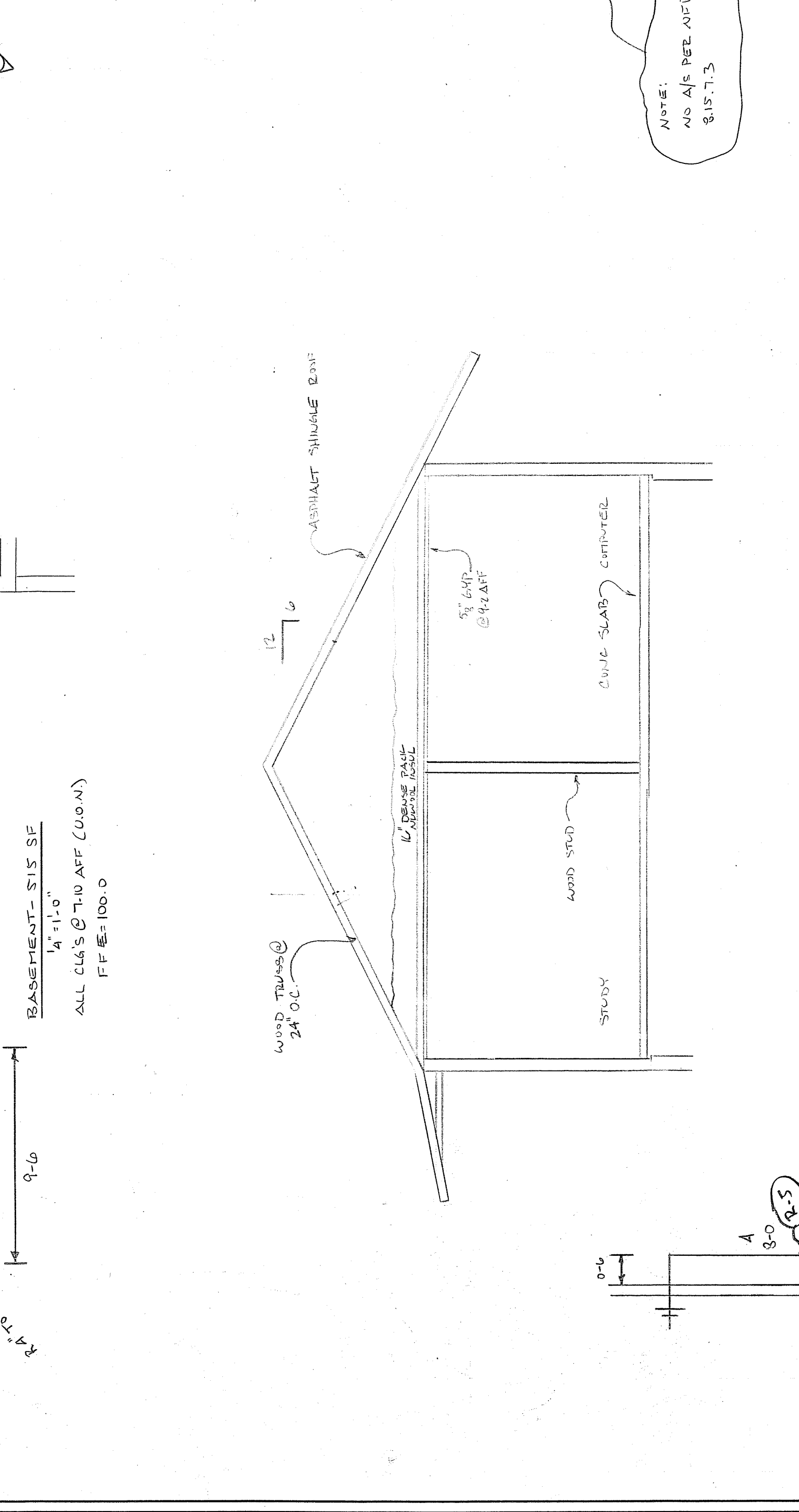
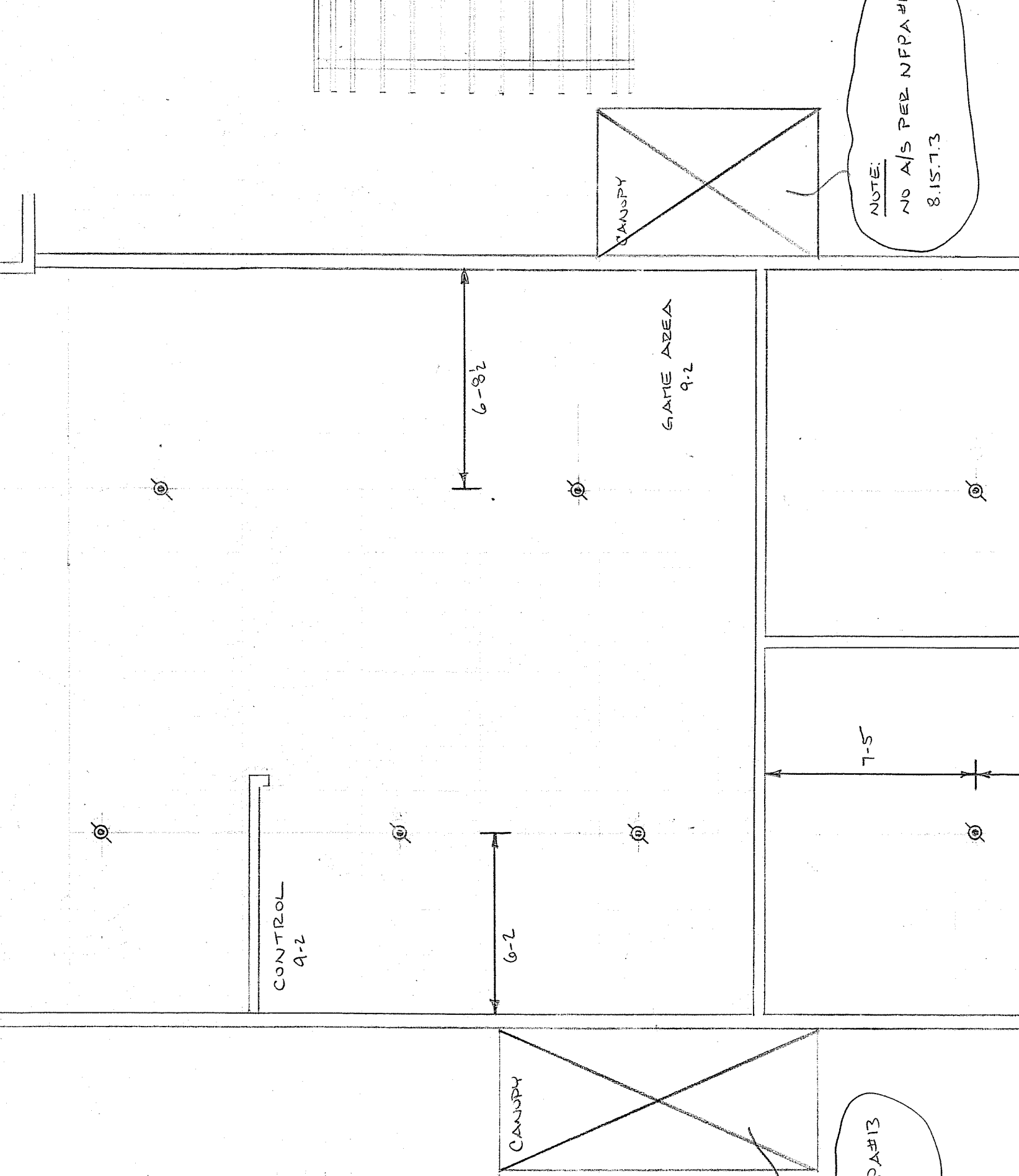
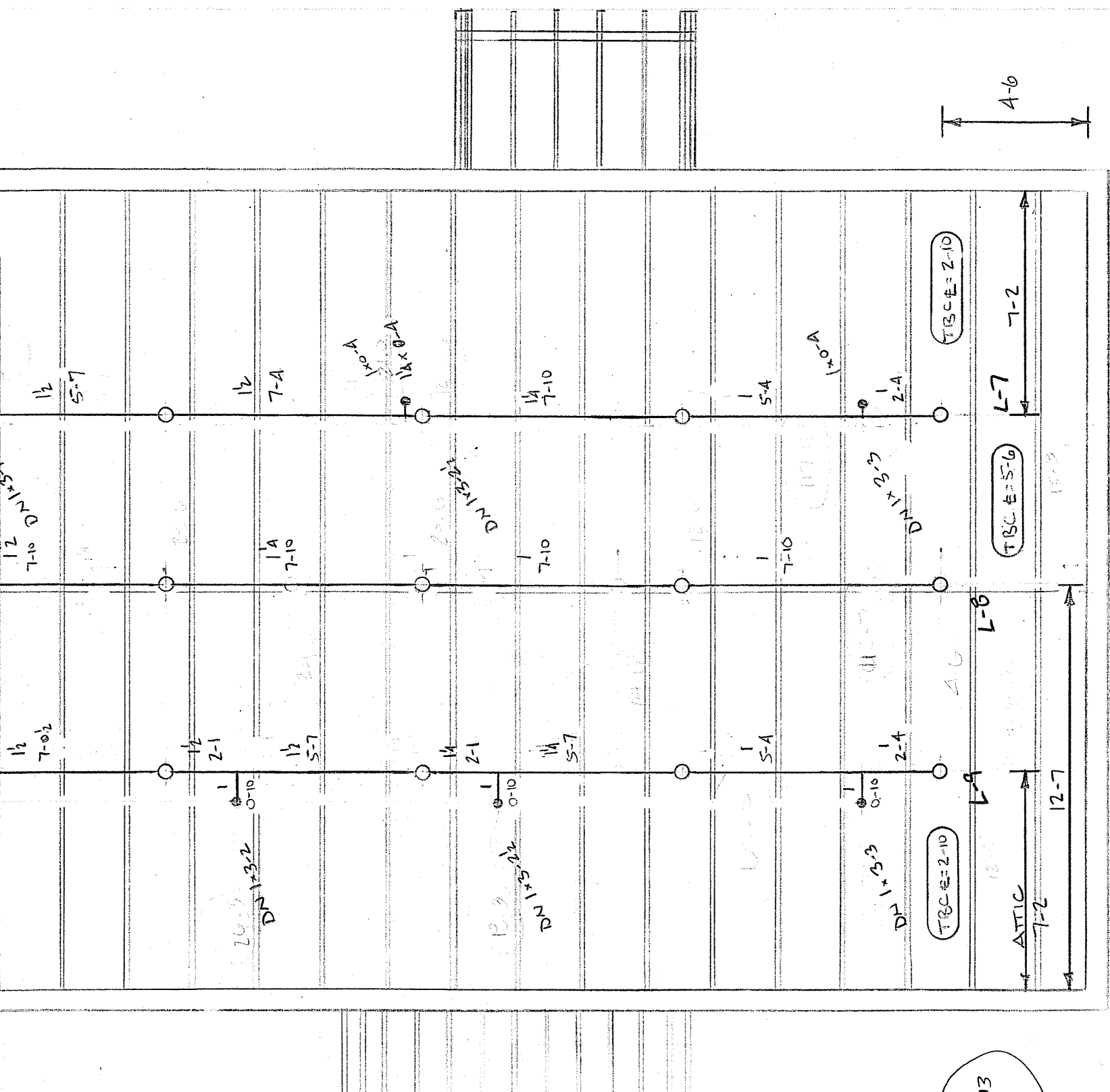
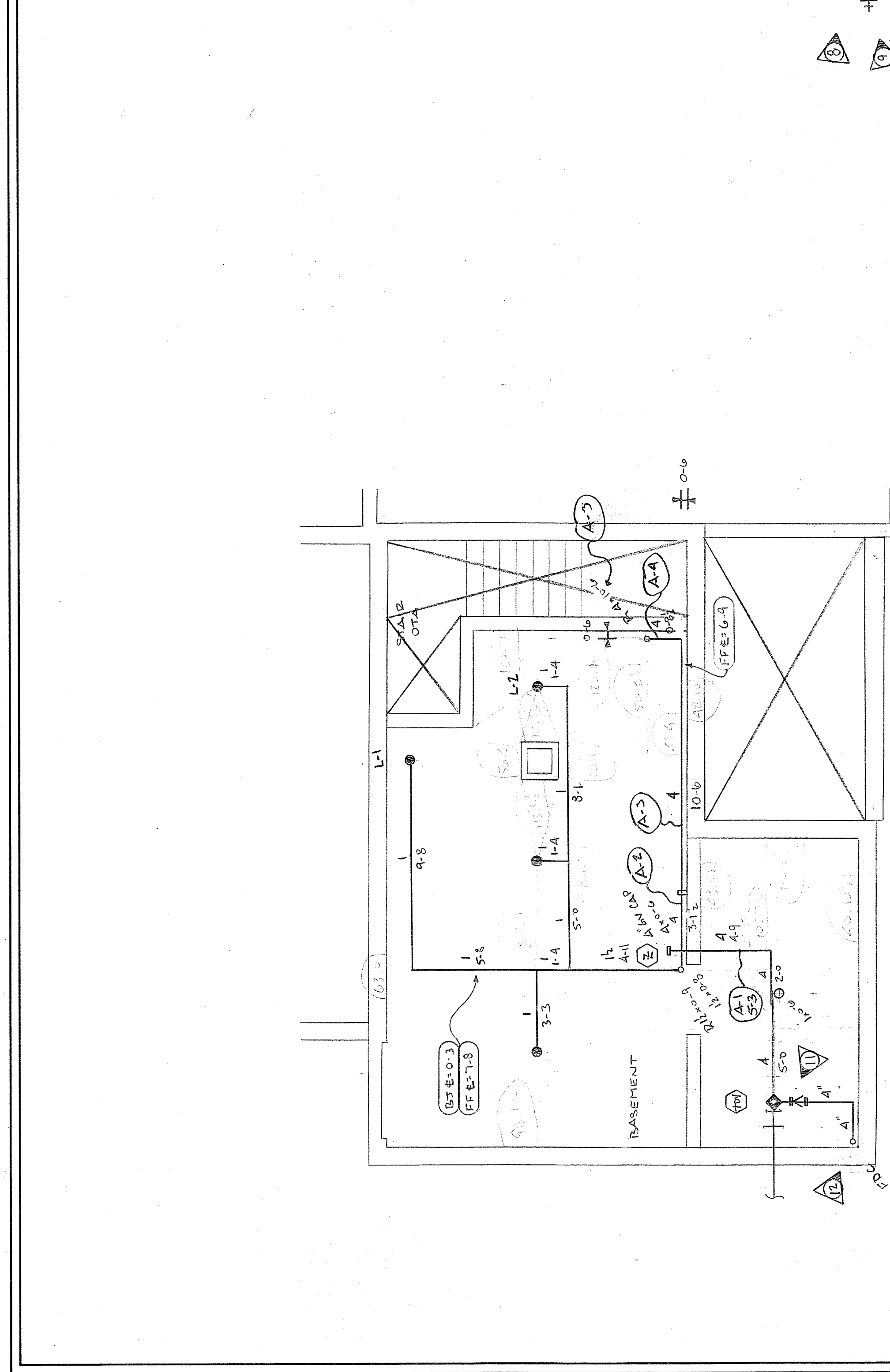
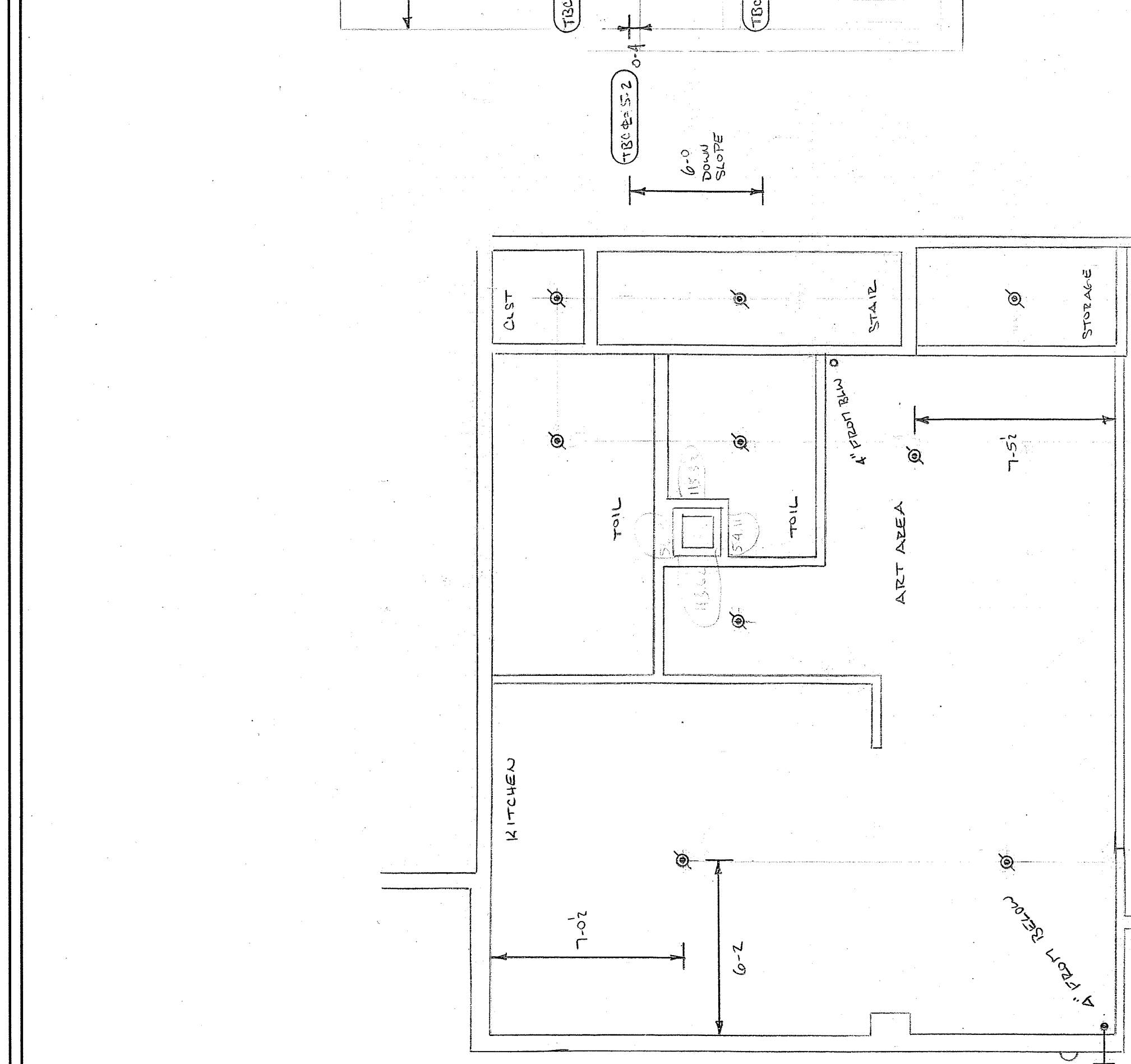
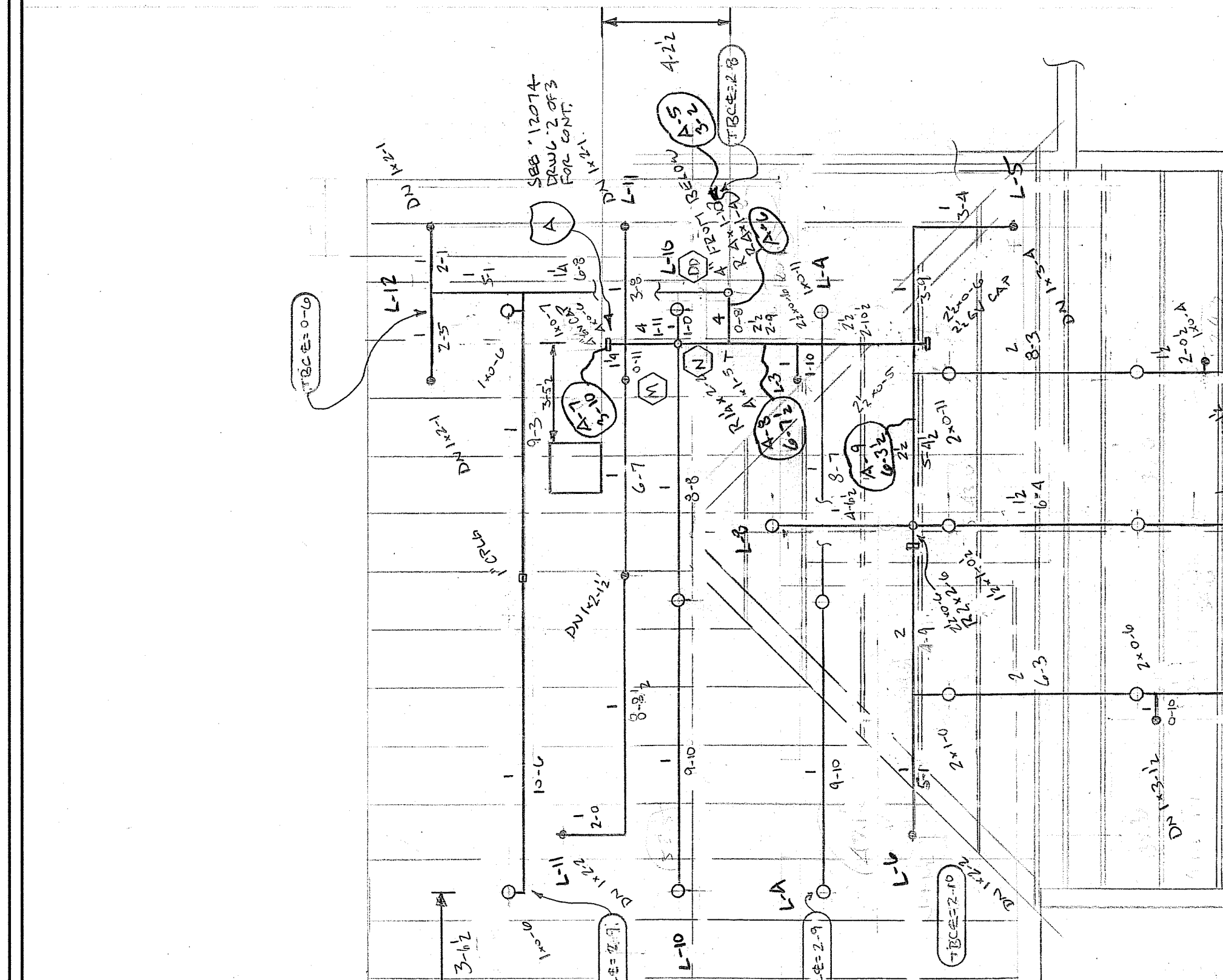
- GENERAL NOTES**
- OCCUPANCY: SOCIAL CLUB/OFFICES-LIGHT HAZARD, 120 SF
  - ATRIC - LIGHT HAZARD, 120 SF
  - BASEMENT - ORDINARY HAZARD 6P 3, 130 SF
  - DESIGN BASIS: NFPA 13B PIPE SCHEDULE SPRINKLER SYSTEM
  - HYDRAULICALLY CALCULATED PIPE SIZES (SEE DATA STAND)
  - ALL PIPING 2" AND LARGER TO BE BLACK STEEL SHED
  - ALL PIPING 2" AND LARGER TO BE BLACK STEEL SHED
  - STEEL THICKNESS ALL FITTINGS TO BE CAST IRON SCREWED OR GROOVED
  - ALL PIPE AND HANGER DIMENSIONS ARE CUT LENGTHS FOR FABRICATION AND INSTALLATION
  - THE TOP OF WOOD TRUSS TO CENTERLINE OF PIPE
  - THE BOTTOM OF WOOD TRUSS TO CENTERLINE OF PIPE
  - TO CENTERLINE OF PIPE
  - TO CENTERLINE OF PIPE
  - OWNER TO PROVIDE SUFFICIENT HEAT (MIN 40°F) TO PREVENT CONTROL VALVE FROM FREEZING
  - OWNER: PORTLAND HOUSING AUTHORITY 14 BAXTER BLVD, PORTLAND, ME 04102
  - ARCHITECT: G.T.A. 2 ARCHITECTS 44 OAK ST., PORTLAND, ME
  - SPRINKLER HEADS TO BE LOCATED IN EXACT CENTER OF WOOD TRUSS

**WATER SUPPLY**

FLOW TEST BY PORTLAND WATER DISTRICT 5-24-2004 WATER WAS FLOWED FROM HYDRO-PON ON BRIGHTON AVE FROM A 12" CIRC. (17" DIA.) TEST HEAD AT 105.8 ON BRIGHTON.

STATIC: 117.81  
RESIDUAL: 117.81 - 1/107 GPM FLOW = 117.81

- LEGEND**
- GEOMETRIC OR SCREWED COUPLING
  - HYDRAULIC REFERENCE POINT
  - EXISTING PIPING TO REMAIN
  - 200# BRASS UPSET SPRAINABLE WITH SIEG



**SPRINKLER HEAD LEGEND**

SYMBOL	MAKE	MODEL	FINISH	TEMP	N.P.T.	ORIFICE	K-FACTOR	TOTAL
1	RELIABLE	F-322	CHT	155°	1/2"	2	5.0	10
2	RELIABLE	F-322	CHT	155°	1/2"	2	5.0	28
3	RELIABLE	F-322	CHT	155°	1/2"	2	5.0	4
4	RELIABLE	F-322	CHT	155°	1/2"	2	5.0	48

**CONTRACT RESPONSIBILITIES**

ITEM	RESPONSIBILITIES
STREET CORN	✓
STREET MAIN	✓
EXCAVATION	✓
FLUSHING	✓
PAINTING	✓
CONNECTIONS	✓
CONDUITS	✓
CUT PATCHING	✓

**CONTRACT SUBMITTALS**

SENT TO	DATE SENT	DATE RECEIVED
ISO		
FM		
LA		
STATE FIRE		
LOCAL FIRE		
LOCAL WATER		
GENERAL		

BOYS & GIRLS CLUB  
21 POPHAM ST  
PORTLAND ME 04102

SCALE: 1/4" = 1'-0"

DRAWN BY: KJF

CHECKED BY: SCG

CONTRACT WITH: HARR MANAGEMENT

SYSTEM TYPE: NO DATE REVISIONS

DATE: 8-12-10

TOTAL SPRINKLER HEADS: 48

PERMIT # 0933

LICENSE # 278

SPRINKLER SYSTEMS INC.

P.O. BOX 1385  
LEWISTON MAINE  
04240