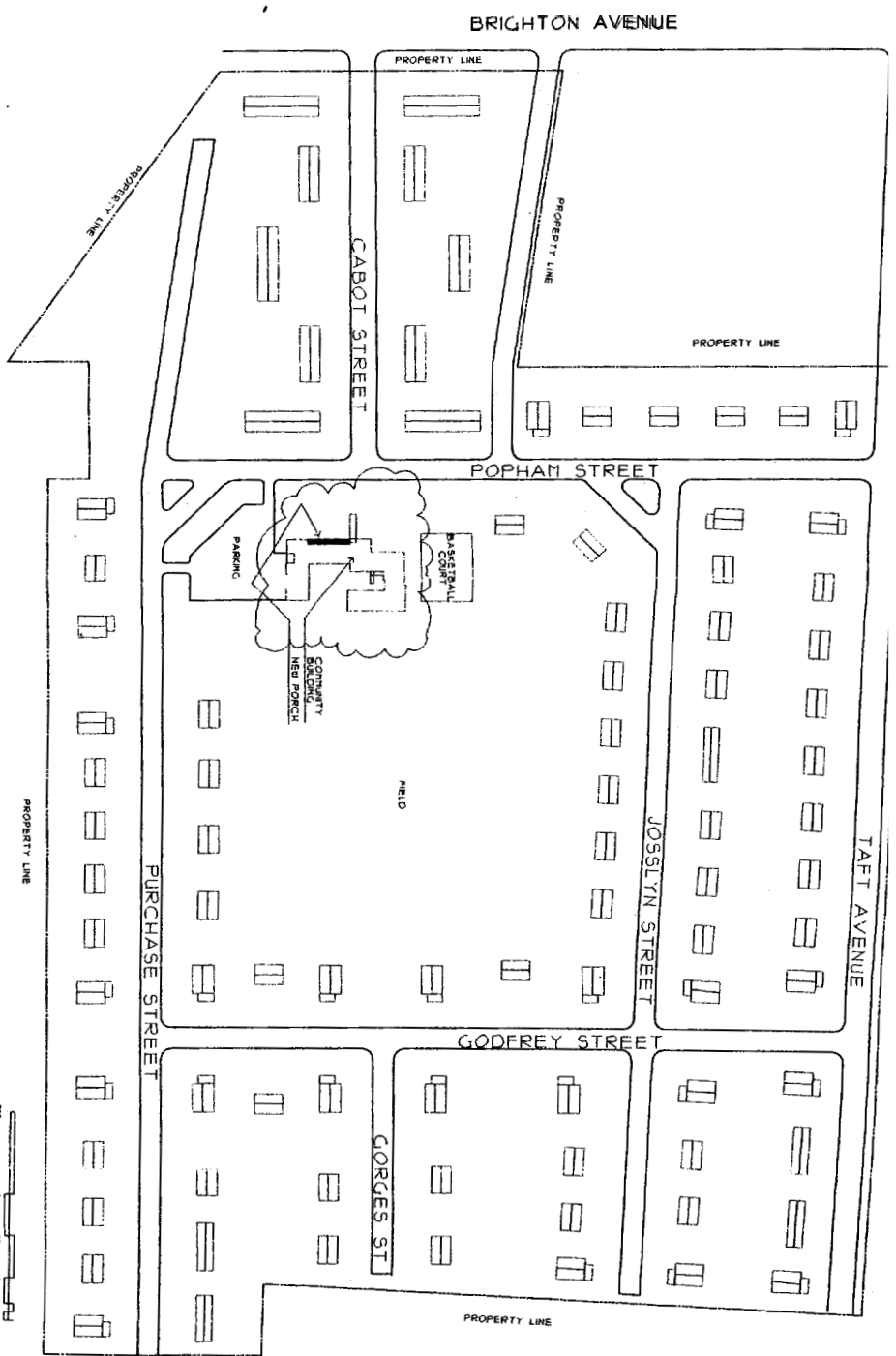


NEW PORCH  
SAGAMORE VILLAGE  
PORTLAND, MAINE  
OWNER  
PORTLAND  
HOUSING  
AUTHORITY



PORTLAND HOUSING AUTHORITY  
SITE PLAN SAGAMORE VILLAGE



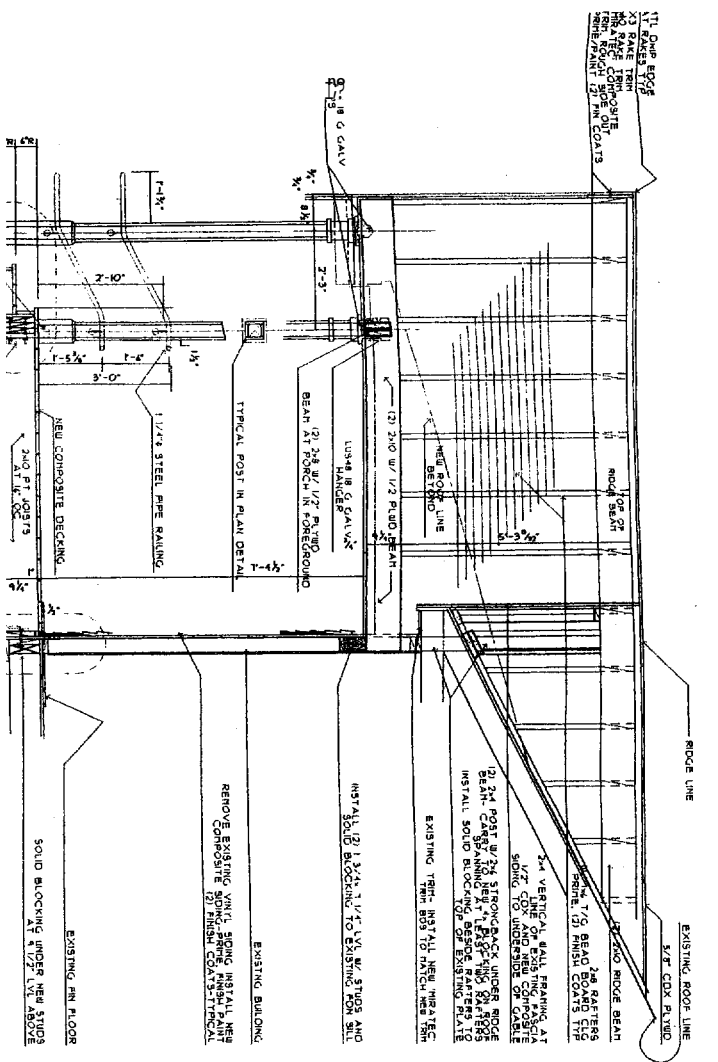
GT&Z architects  
44 Oak Street  
Portland, Maine 04101  
207-771-5461 fax 774-0846

revisions  
044  
NOVEMBER 2004

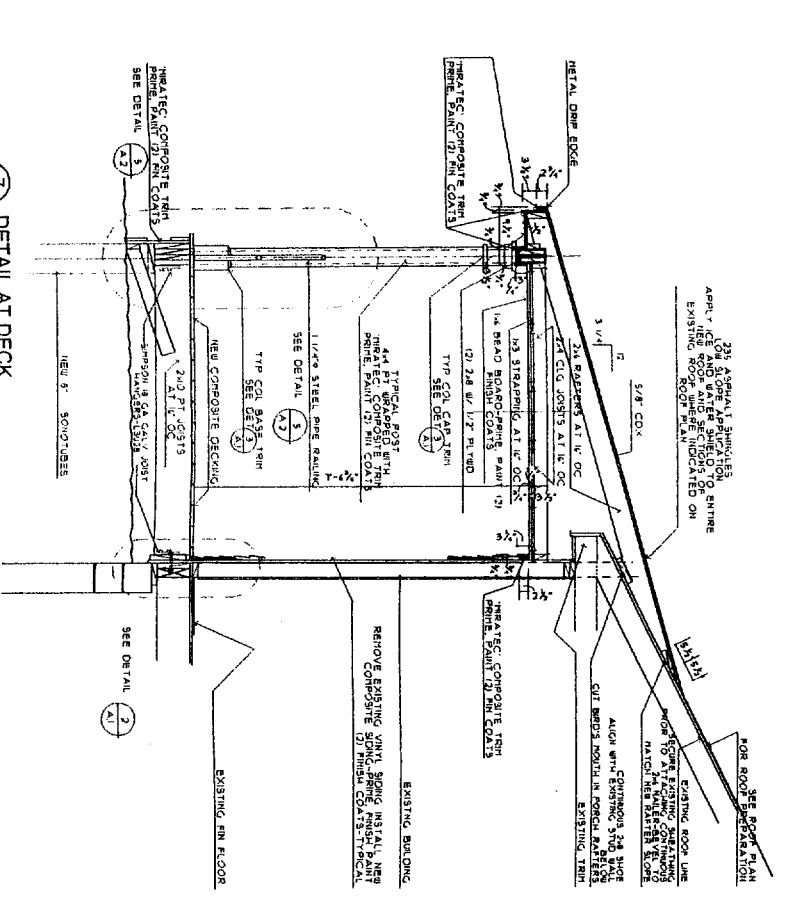
sheet 3/34  
**SITE  
PLAN**

notes  
AS NOTED  
drawn by  
SMT  
project number  
0428

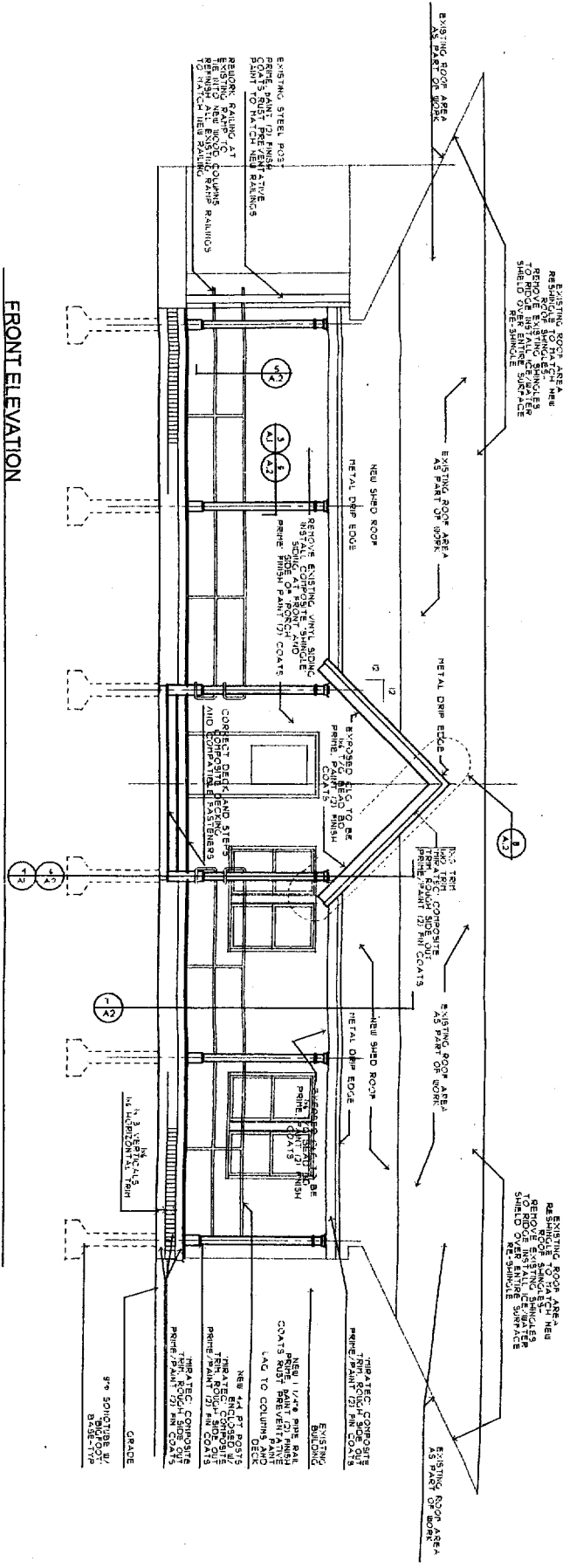
sheet number  
**S.1**



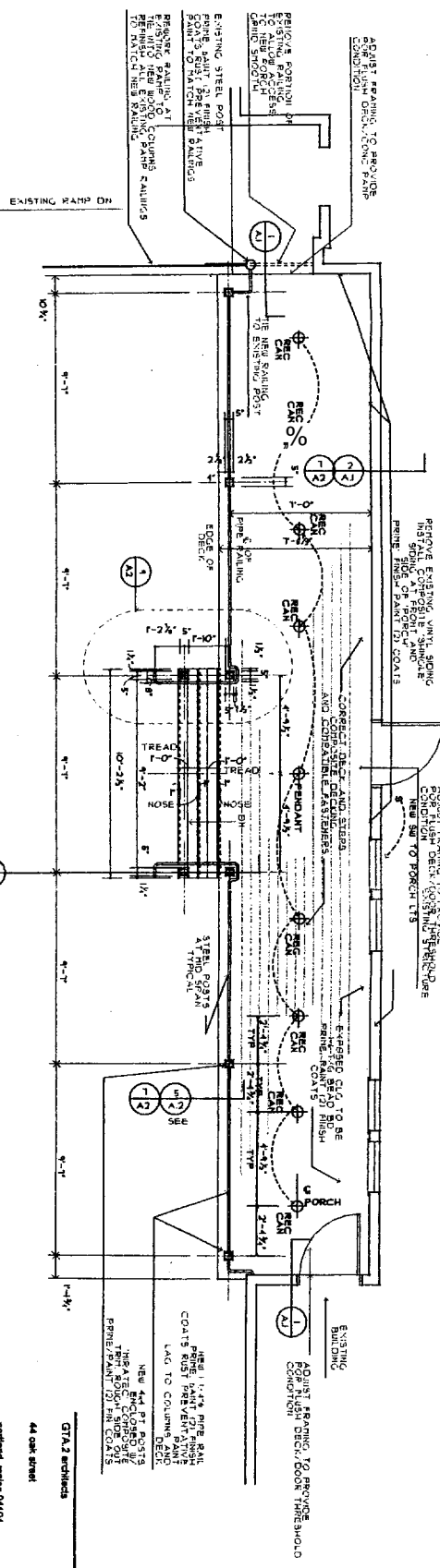
6 DETAIL AT DECK ENTRY  
SCALE: 1/2"=1'-0"



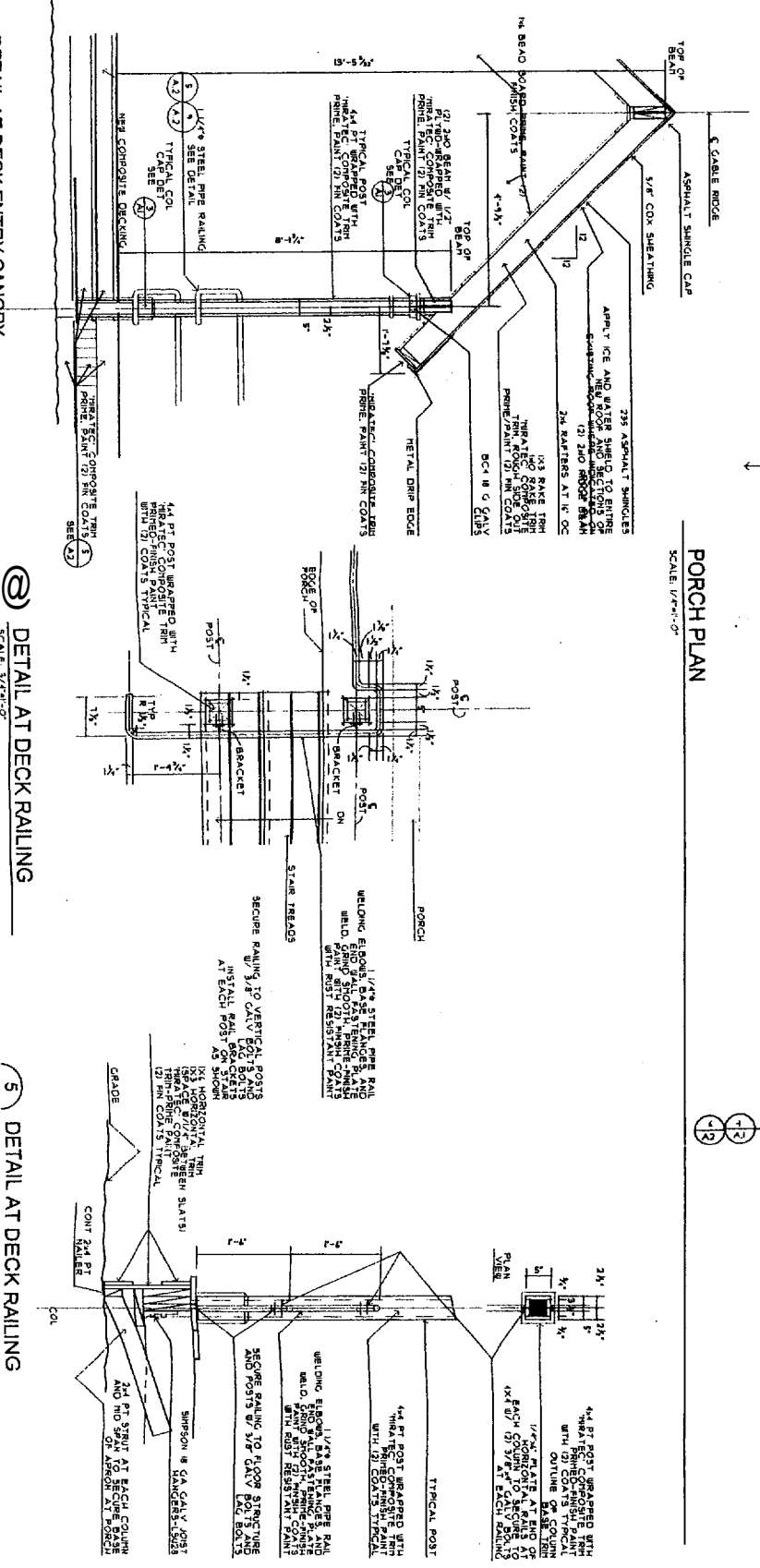
7 DETAIL AT DECK



FRONT ELEVATION  
SCALE: 1/4"=1'-0"



PORCH PLAN  
SCALE: 1/4"=1'-0"



8 DETAIL AT DECK RAILING  
SCALE: 3/8"=1'-0"

5 DETAIL AT DECK RAILING

PORTLAND HOUSING AUTHORITY  
SAGAMORE VILLAGE  
COMMUNITY BUILDING  
**A.2**

DATE: NOVEMBER 2004  
DRAWN BY: SMF  
PROJECT NUMBER: 0428

REGISTERED ARCHITECT  
STATE OF OREGON  
207-771-8481 (or 774-0844)  
Portland, Maine 04101

GTA 2 sections  
44 oak street

Sheet title  
PLAN  
SECTION  
DETAILS

AS NOTED