

brandpartners

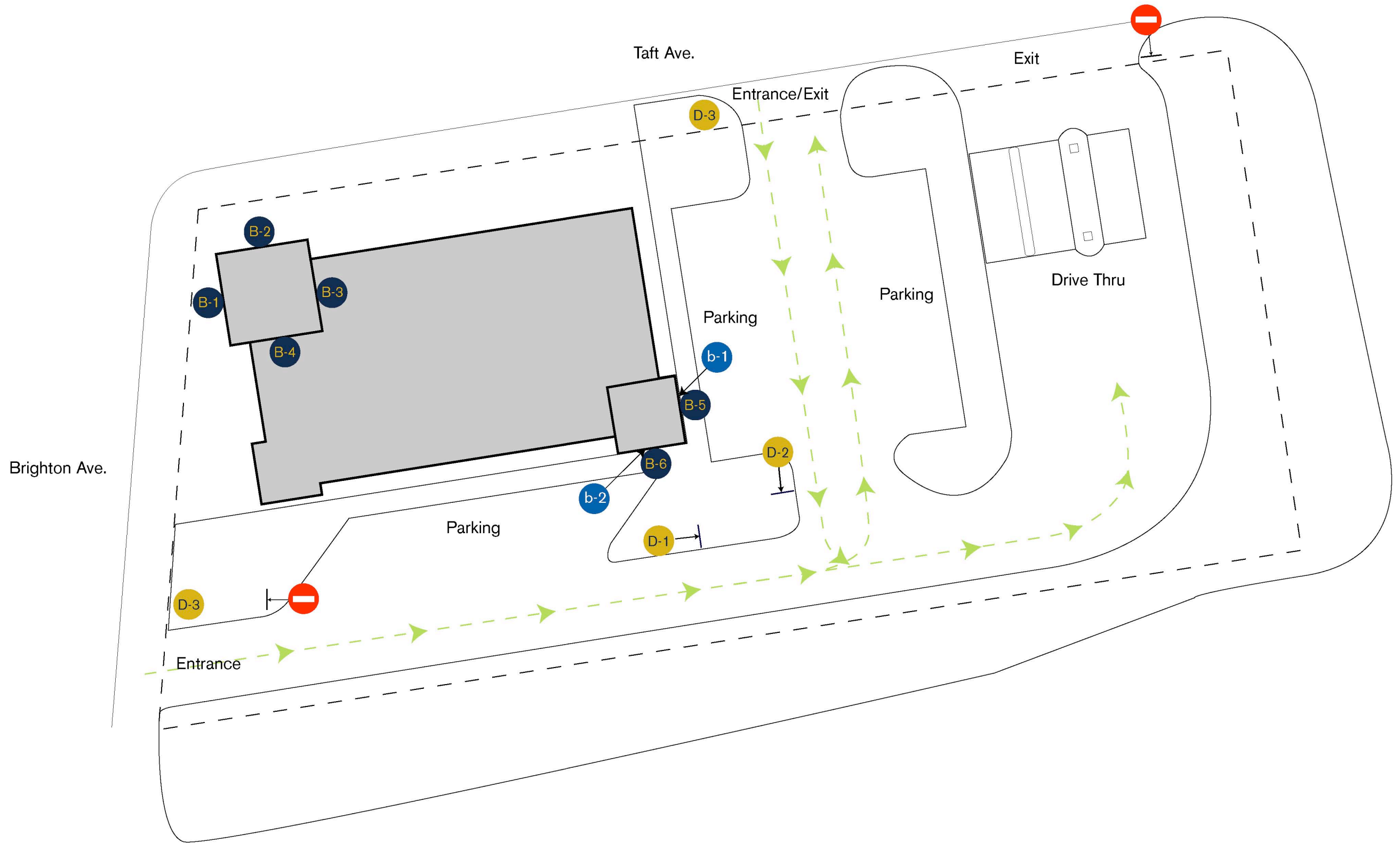
UNIVERSITY CREDIT UNION

EXTERIOR SIGNAGE PACKAGE

JANUARY 2007

EXTERIOR SIGN KEY

- B Branding Primary
- b Branding Secondary
- D Directional Signage
- ⊘ "Do Not Enter" Sign
- Traffic Flow

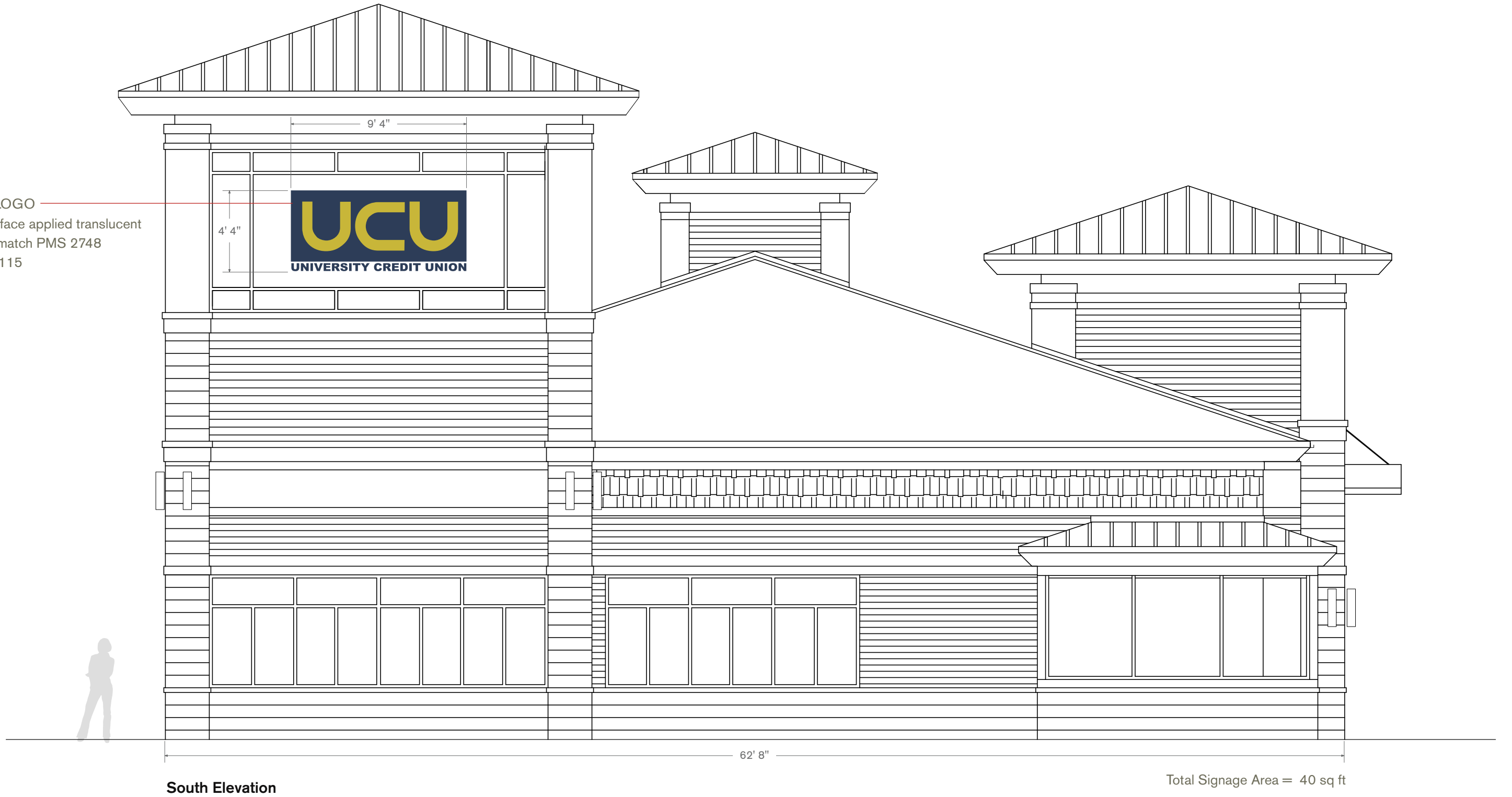




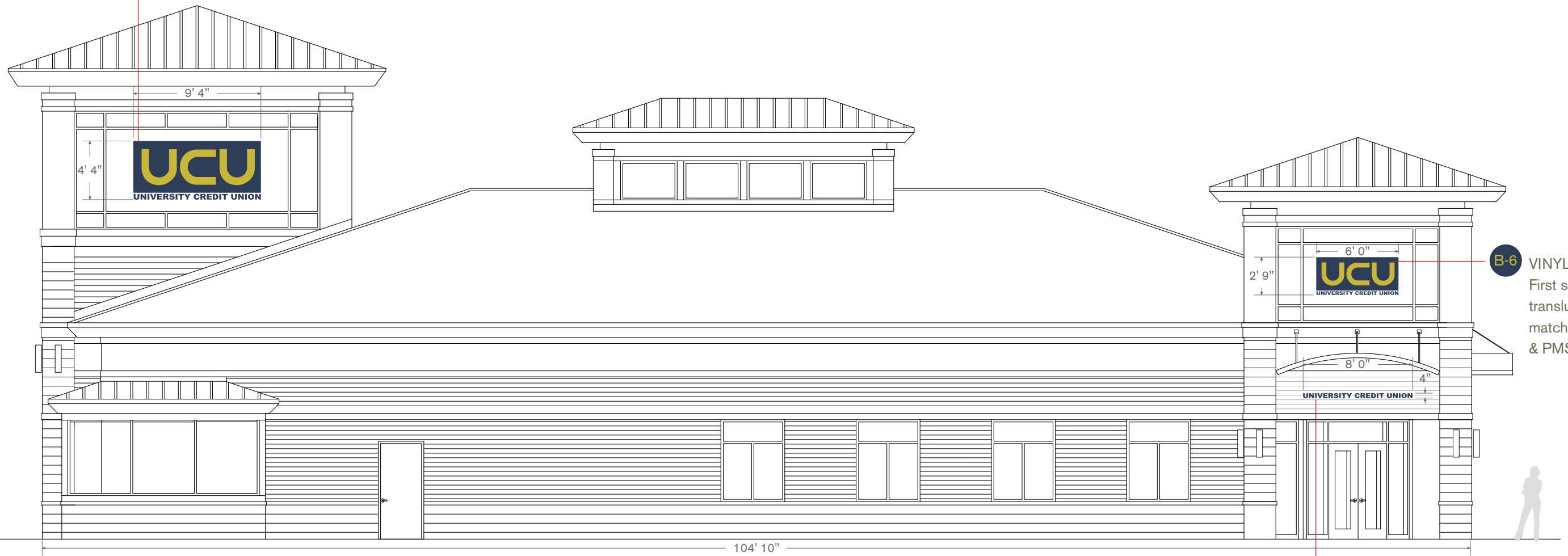
North Elevation

Total Signage Area = 57 sq ft

B-1 VINYL LOGO
 First surface applied translucent vinyl to match PMS 2748 & PMS 115



B-4 VINYL LOGO
 First surface applied translucent vinyl to match PMS 2748 & PMS 115

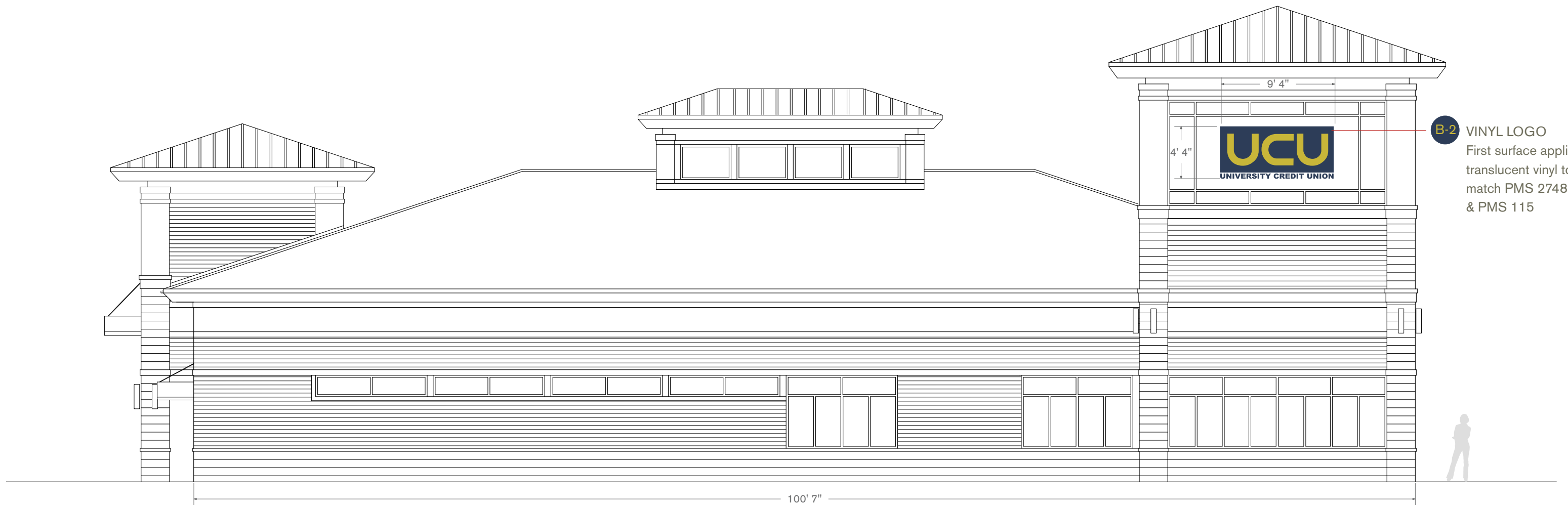


B-6 VINYL LOGO
 First surface applied translucent vinyl to match PMS 2748 & PMS 115

b-2 DIMENSIONAL LETTERS
 1/2" pin mounted letters painted to match PMS 2748

East Elevation

Total Signage Area = 57 sq ft



West Elevation

Total Signage Area = 40 sq ft



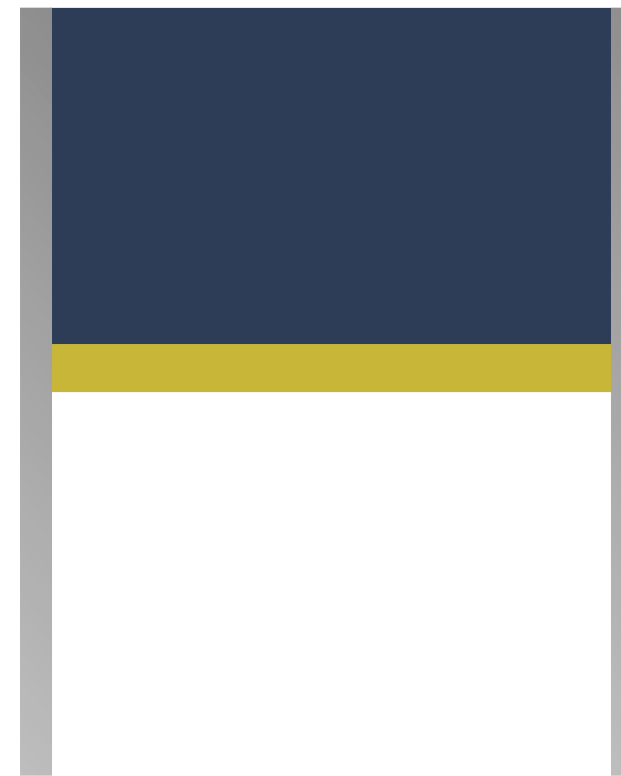
Top View

D-1

DIRECTIONAL SIGNAGE
1/4" rigid sign panel painted
to match PMS 2748 & PMS 115



Front



Back

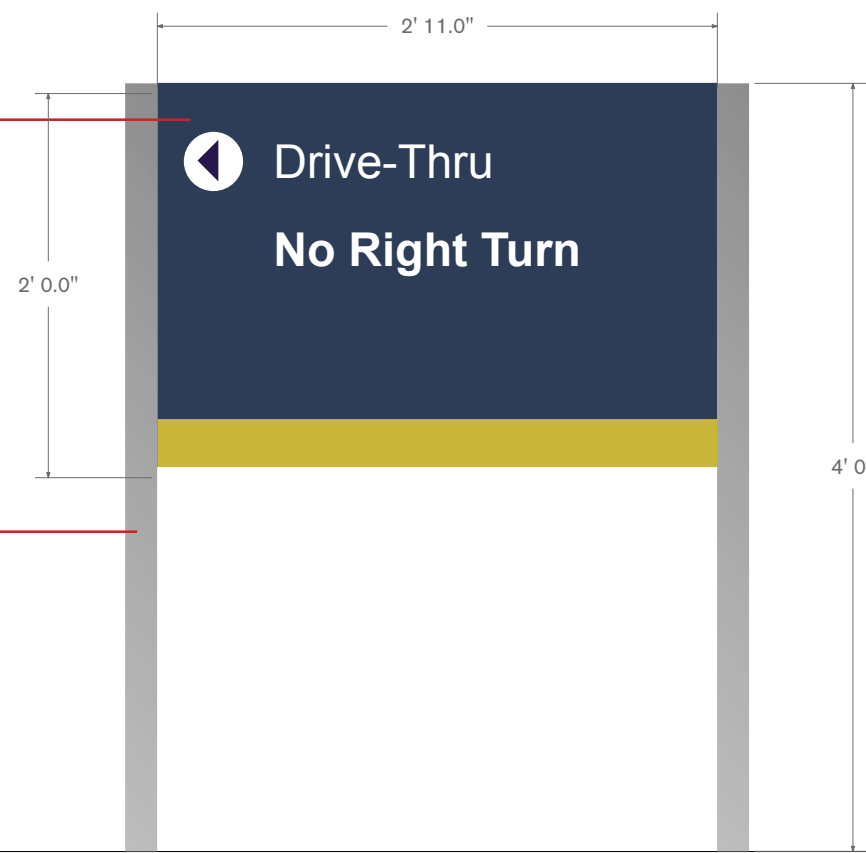
Total Signage Area = 5.8 sq ft



2" sq painted satin silver
metal post

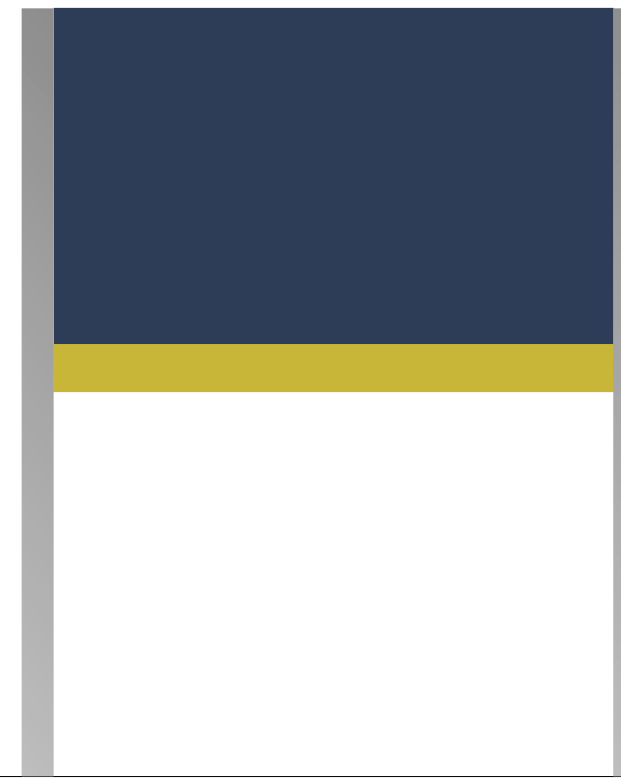


D-2 DIRECTIONAL SIGNAGE
 1/4" rigid sign panel painted
 to match PMS 2748 & PMS 115



2" sq painted satin silver
 metal post

Front



Back

Total Signage Area = 5.8 sq ft

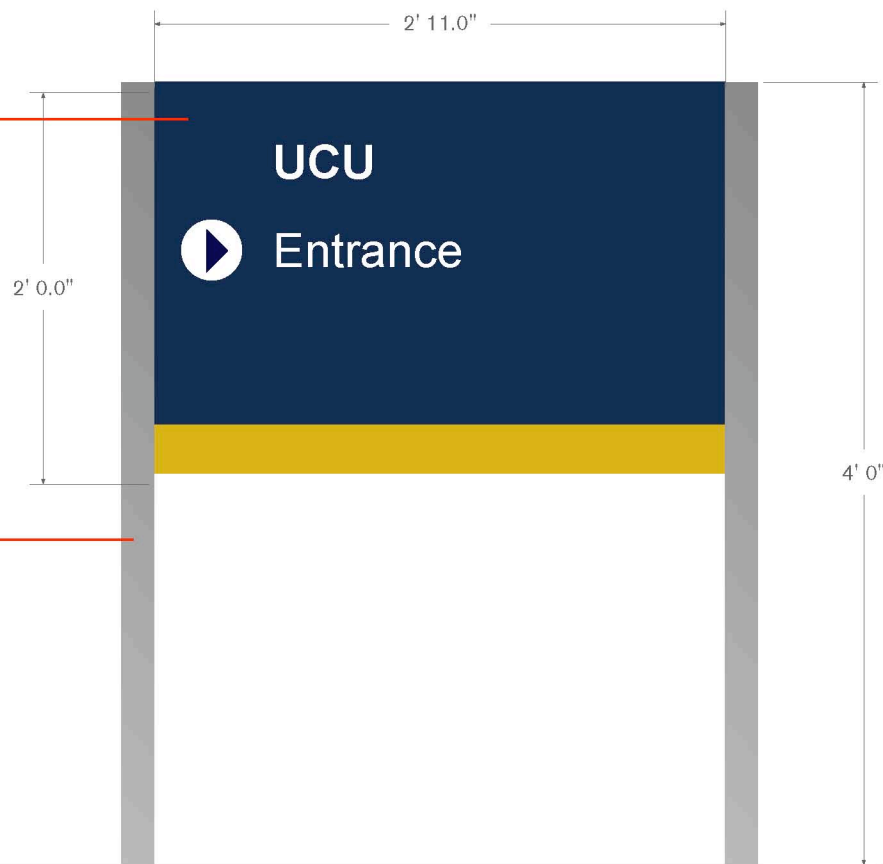




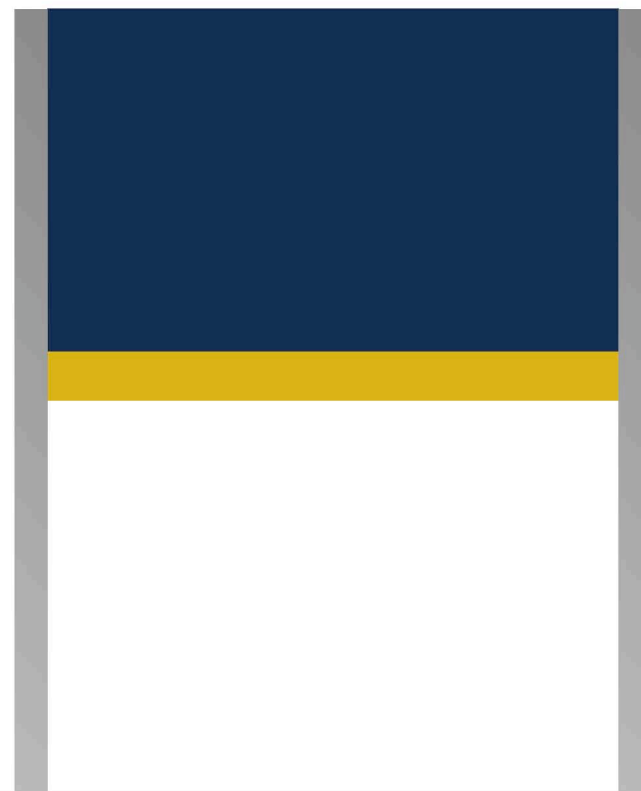
D-3

DIRECTIONAL SIGNAGE
1/4" rigid sign panel painted
to match PMS 2748 & PMS 115

2" sq painted satin silver
metal post



Front



Back

Total Signage Area = 5.8 sq ft



BrandPartners

Information, material, and designs in this document are proprietary to and owned by BrandPartners Retail, Inc. and may not be disclosed to any third party, reproduced, posted on a global computer information network, or distributed in any way without the written consent from BrandPartners Retail, Inc.