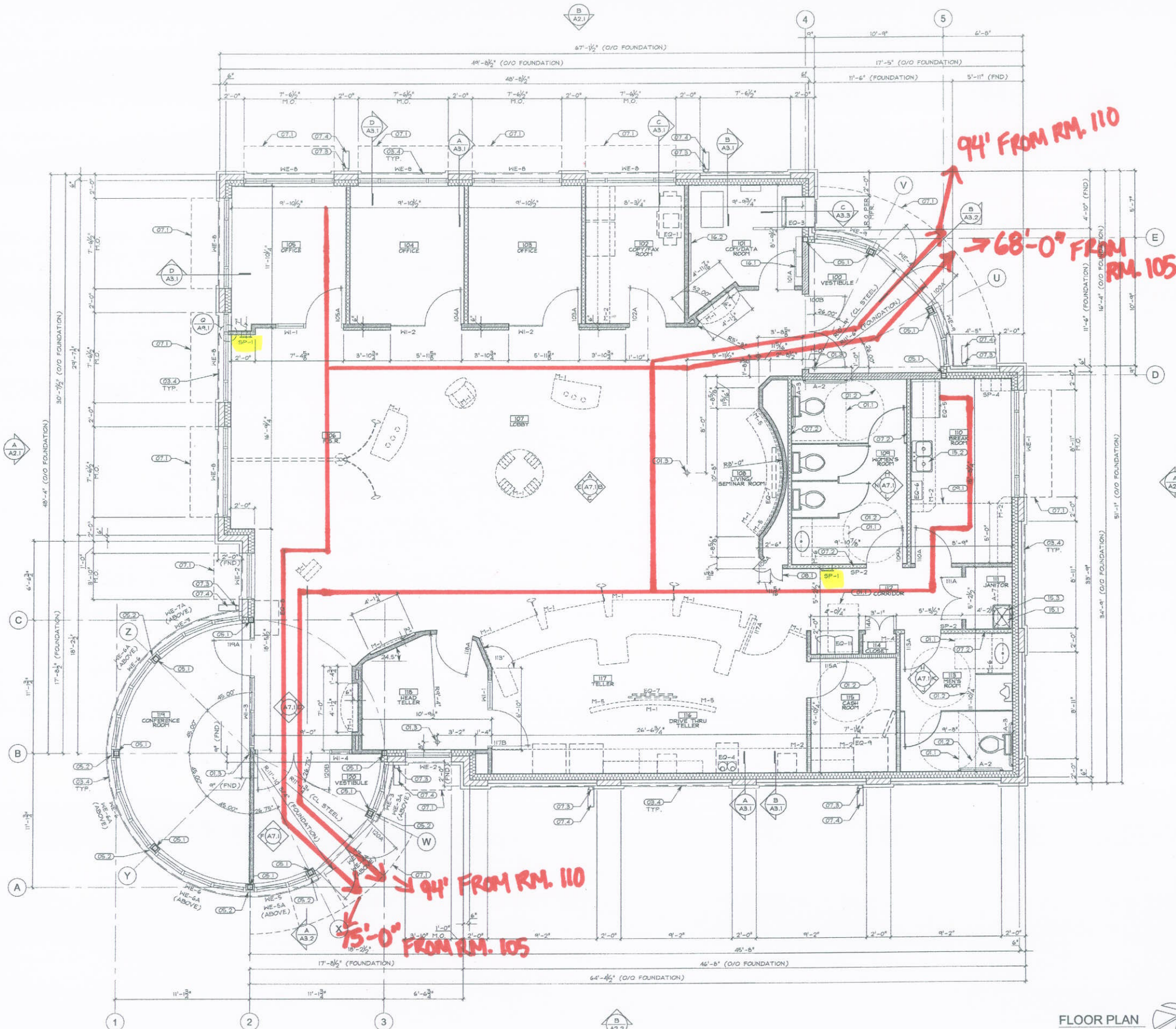


LIFE SAFETY PLAN



GENERAL NOTES: FLOOR PLAN

- REFER TO TTL SHEET FOR ALL ABBREVIATIONS AND SYMBOLS.
- VERIFY ALL EQUIPMENT (INCLUDING BANK EQUIPMENT) OPENINGS & LOCATIONS. EQUIPMENT TO BE INSTALLED PER MANUFACTURER'S RECOMMENDATIONS. LOCATIONS AND SIZES SHOWN ARE FOR INTENT PURPOSES ONLY. ADJUST ROUGH OPENINGS AND LOCATIONS AS REQUIRED PER ACTUAL EQUIPMENT.
- DOOR JAMBS ARE 4" FROM NEAREST ADJACENT INTERSECTING PARTITION UNLESS NOTED OTHERWISE. SEE DOOR DETAILS FOR FURTHER INFORMATION.
- G.C. TO PROVIDE & INSTALL ALL IN-WALL OR IN-CEILING BLOCKING/BRACING AS REQUIRED FOR ALL MILLWORK ITEMS, EQUIPMENT, SHELVING, AND ACCESSORIES WHETHER ITEMS ARE BY G.C. OR OTHERS. COORDINATE WITH BRANDPARTNERS.
- G.C. SHALL BE RESPONSIBLE FOR LAYING OUT THE SPACE PRIOR TO COMMENCING WORK AND SHALL NOTIFY THE ARCHITECT AND OWNER OF ANY DISCREPANCIES.
- ALL CONCRETE MASONRY UNITS AND MORTAR TO INCLUDE AN INTEGRAL WATER REPELLANT.
- REFER TO SHEET A0.1 FOR PARTITION TYPE, EQUIPMENT, MILLWORK & SPECIALTY SCHEDULES.
- REFER TO SHEET A6.1 FOR DOOR SCHEDULE & FRAME ELEVATIONS.
- REFER TO SHEET A6.2 FOR WINDOW SCHEDULE & FRAME ELEVATIONS.
- REFER TO A7.1 FOR ACCESSORY SCHEDULE.

DIMENSIONING NOTES: FLOOR PLAN

- ALL EXTERIOR DIMENSIONS ARE TO FACE OF STUD AND ARE EQUAL TO FACE OF FOUNDATION, UNLESS SPECIFICALLY NOTED OTHERWISE.
- ALL INTERIOR DIMENSIONS ARE TO FACE OF FRAMING, UNLESS SPECIFICALLY NOTED OTHERWISE.
- ALL DIMENSIONS SHOWN LOCATING WINDOWS ARE TO CENTERLINE OF WINDOW, UNLESS SPECIFICALLY NOTED OTHERWISE.
- ALL INTERIOR STUD WALLS ARE 3/8" METAL UNLESS NOTED OTHERWISE ON THE FLOOR PLAN & PARTITION TYPE SCHEDULE.

CODED NOTES: FLOOR PLAN

- NOTE: NOT ALL NOTES LISTED BELOW ARE NECESSARILY USED ON THIS SHEET. THE DIVISION OF KEY NOTING SYSTEM DOES NOT CONTROL THE DIVISION OF WORK AMONG TRADES NOR THE EXTENT OF WORK TO BE PERFORMED BY ANY TRADE.
- DIVISION 01 - GENERAL REQUIREMENTS**
- 01.1 - MAINTAIN REQUIRED CLEAR FLOOR AREA FOR HANDICAP ACCESSIBILITY
 - 01.2 - MAINTAIN REQUIRED CLEAR TURNING RADIUS PER APPLICABLE CODES.
 - 01.3 - CENTER POINT FOR ARC OF HALL RADIUS.
- DIVISION 03 - CONCRETE**
- 03.1 - CONCRETE CURB (SEE CIVIL SHEETS)
 - 03.2 - CONCRETE ISLAND (SEE CIVIL SHEETS)
 - 03.3 - 4" CONCRETE FILLED STEEL PIPE BOLLARD. REFER TO CIVIL DRAWINGS AND/OR BANK EQUIPMENT SHOP DRAWINGS FOR EXACT LOCATIONS. REFER TO DETAIL E/A4.2 (SIF.).
 - 03.4 - DASHED LINE INDICATES FACE OF CONCRETE FOUNDATION (SEE STRUCTURAL SHEETS, TYP.)
- DIVISION 05 - METALS**
- 05.1 - STEEL COLUMN (SEE STRUCTURAL SHEETS)
 - 05.2 - BREAK METAL COVER. FINISH TO MATCH ADJACENT WINDOW.
- DIVISION 07 - THERMAL & MOISTURE PROTECTION**
- 07.1 - DASHED LINE INDICATES LINE OF ROOF EAVE/AVENUE ABOVE.
 - 07.2 - G.C. TO PROVIDE & INSTALL 1/2" ROUND BATT INSULATION FOR FULL HEIGHT OF WALL AND ON TOP OF LATH IN CEILING IN ROOFS 103, 104, 105, 109 & 115. HOLD INSULATION TIGHT TO ONE FACE & TAPE INTO PARTITION. CLOSE & CAULK ALL GAPS AT FLOOR BY SETTING FLOOR RUNNER ON TWO CONTINUOUS CAULK BEADS.
 - 07.3 - DOWNSPOUT.
 - 07.4 - SPLASH BLOCK - DRAIN INTO LANDSCAPE PLANTING BED.
- DIVISION 08 - OPENINGS**
- 08.1 - CUSTOM DOOR PROVIDED BY MILLWORKER. G.C. TO PROVIDE ROUGH OPENING.
- DIVISION 09 - FINISHES**
- 09.1 - LINE OF PLATFORM SHELF ABOVE.
- DIVISION 15 - PLUMBING & MECHANICAL**
- 15.1 - UTILITY SINK (SEE PLUMBING SHEETS)
 - 15.2 - STAINLESS STEEL DOUBLE BASIN SINK (SEE PLUMBING SHEETS)
 - 15.3 - HOT WATER HEATER LOCATED ON PLATFORM ABOVE UTILITY SINK (SEE PLUMBING SHEETS)
 - 15.4 - FLOOR DRAIN (SEE PLUMBING SHEETS)
 - 15.5 - ROOF DRAIN, CONNECT DIRECTLY THRU STRUCTURE TO DOWNSPOUT BELOW.
- DIVISION 16 - ELECTRICAL**
- 16.1 - SURFACE MOUNTED ELECTRICAL PANELS (SEE ELECTRICAL SHEETS)
 - 16.2 - 3/4" PLYWOOD PHONE BOARD, G.C. TO COORDINATE SIZE & LOCATION WITH BRANDPARTNERS, PRIME & PAINT. (SEE ELECTRICAL SHEETS)
 - 16.3 - CENTER DRIVE-UP CANOPY LIGHTS ON DRIVE-UP LANE BELOW U.O.

→ LOCATION OF FIRE EXTINGUISHER

brandpartners
BrandPartners Group, Inc.
10 Main Street
Rochester, NH 03839
Phone: 603.335.1400
Fax: 603.335.1765

ARCHITECT
SHREMSHOCK ARCHITECTS, INC.
6130 S. Sunbury Road
Westerville, OH 43081
(614)545-4550 p
(614)545-4555 f
Info@shremshock.com
www.shremshock.com

TITLE
FLOOR PLAN

SCALE
1/4" = 1'-0"

CLIENT
UNIVERSITY CREDIT UNION
1071 BRIGHTON AVENUE
PORTLAND, ME 04102

DATE: MAY 02 2007
Your signature on these drawings indicates you understand and approve the work shown, and you agree these plans to be reproduced as shown.
BERNARD S. SHREMSHOCK
No. AN2257
STATE OF MAINE
LICENSED ARCHITECT

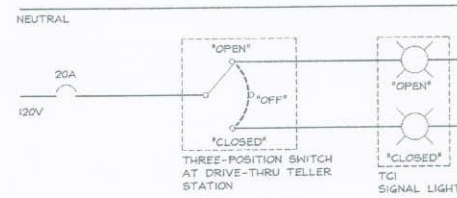
INFO

PATH	
ISSUE DATE	05-01-07
DRAWN BY	JPR
CHECKED BY	JRM
REVISION	
1.	
2.	
3.	
4.	
5.	
6.	
7.	
8.	
9.	
10.	
11.	
12.	
13.	

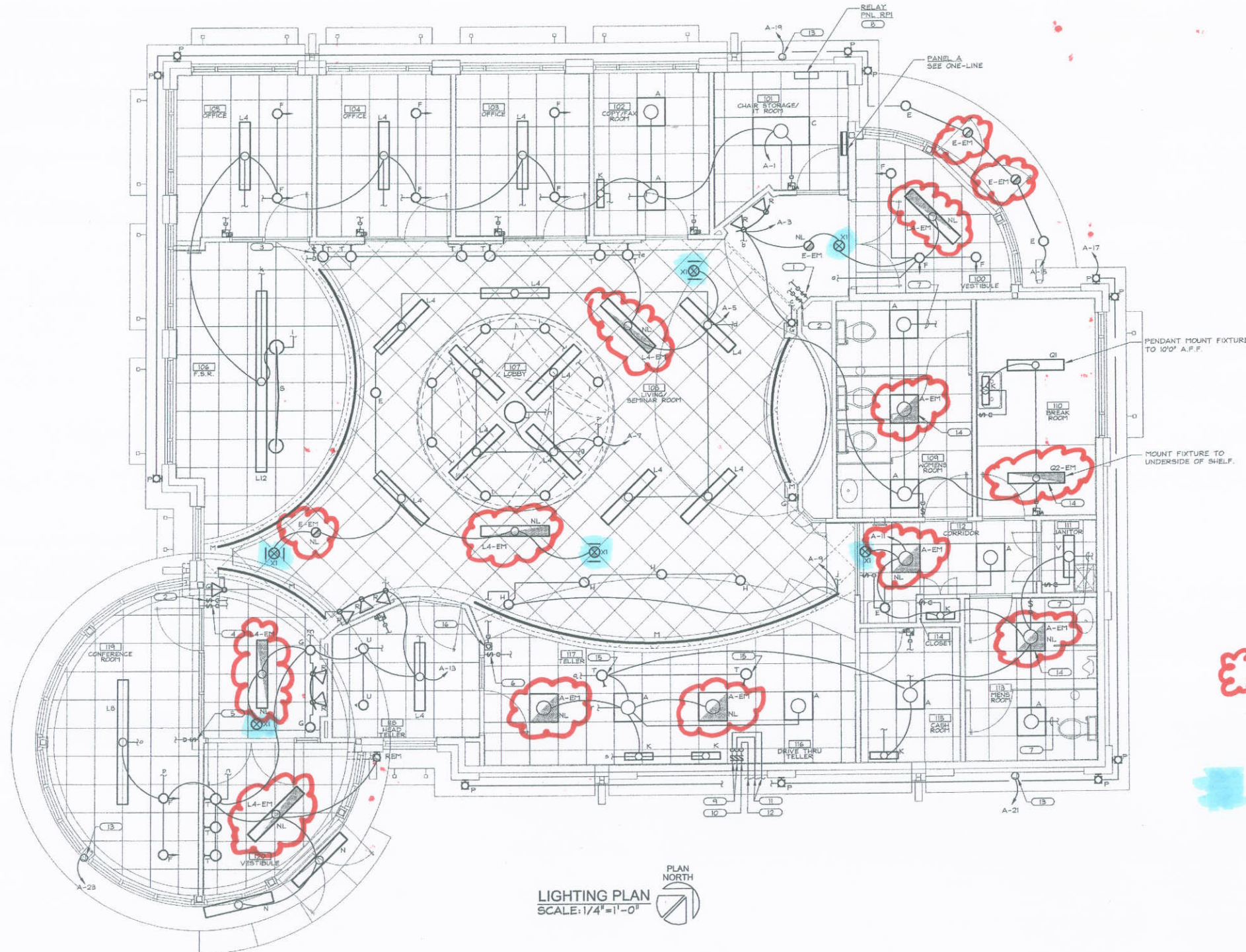
A1.1

FLOOR PLAN
1/4" = 1'-0"

LIFE SAFETY PLAN



DRIVE-THRU SIGN CONTROL DIAGRAM
SCALE: NONE
(TYPICAL OF TWO SIGNS)



GENERAL NOTES

- UNLESS OTHERWISE NOTED, CONNECT NIGHT LIGHTS (FIXTURES MARKED "NL"), EXIT SIGNS, AND EMERGENCY BATTERY PACKS OF ALL SHADED FIXTURES TO LOCAL LIGHTING CIRCUIT AHEAD OF ALL SWITCHING.
- COORDINATE AND SCHEDULE ALL WORK WITH OTHER TRADES AND OWNER.
- ALL ELECTRICAL INSTALLATIONS SHALL COMPLY WITH LOCAL AND STATE CODES.
- NOTE THAT FIXTURE DESIGNATIONS, LOCATIONS, ETC., ARE FROM ARCHITECTURAL AND LIGHTING CONSULTANT'S DRAWINGS. VERIFY ALL REQUIREMENTS WITH LIGHTING CONSULTANT PRIOR TO BIDS AND FIELD COORDINATE ALL INSTALLATIONS. PROVIDE ALL MOUNTING ACCESSORIES REQUIRED FOR COMPLETE INSTALLATIONS PER PROJECT REQUIREMENTS.
- UNLESS NOTED OTHERWISE, ALL LIGHTING CIRCUITS SHOWN ON THIS PLAN SHALL BE CONNECTED TO THEIR RESPECTIVE CIRCUITS THROUGH RELAY PANEL RPI.
- OSIS REPRESENTS OCCUPANCY SENSOR, LEVITON MODEL # OD505-1DI WITH 1 OVERRIDE BUTTON. CONNECT TO FIXTURES PER MANUFACTURER'S RECOMMENDATIONS.
- OSIS REPRESENTS OCCUPANCY SENSOR, LEVITON MODEL # OD505-1DI WITH 2 OVERRIDE BUTTONS FOR TWO LIGHTING CIRCUITS SHOWN IN SPACE. CONNECT TO FIXTURES PER MANUFACTURER'S RECOMMENDATIONS.
- DEVICES SHALL NOT BE INSTALLED BACK-TO-BACK IN ADJACENT ROOMS. ADJUST LOCATIONS AS NECESSARY TO AVOID THIS CONDITION.
- UNLESS NOTED OTHERWISE, CIRCUITS SERVING BUILDING SIGNS, EXTERIOR LIGHTS AND DRIVE-THRU CANOPY LIGHTS SHALL BE CONTROLLED THROUGH RELAYS IN RELAY PANEL RPI PROGRAMMED FOR DUSK-TO-DAWN ILLUMINATION. COORDINATE PROGRAMMING SCHEDULE WITH OWNER.
- PROVIDE CUSTOM LABELING ON ALL MULTIPLE-CIRCUIT DIGITAL SWITCHES FOR IDENTIFICATION OF LIGHT FIXTURES CONTROLLED BY THE SWITCHES.
- RUN (2) #10 AND (1) #10 GROUND IN 3/4" CONDUIT FOR ALL EMERGENCY LIGHTING, EXTERIOR LIGHTING, BUILDING SIGN, AND DRIVE-THRU CANOPY LIGHTING CIRCUITS.
- UNLESS NOTED OTHERWISE, SWITCHES SHOWN ON THIS PLAN SHALL BE 1-BUTTON LOW VOLTAGE SWITCH, LEVITON MODEL # LVS-01N. PROVIDE PROGRAMMING FOR ON/OFF OVERRIDE SWITCHING OF LIGHTING FIXTURE(S) AS SHOWN.

CODED NOTES

- PROVIDE 2-BUTTON LOW VOLTAGE SWITCH, LEVITON MODEL # LVS-02N. PROVIDE PROGRAMMING FOR ON/OFF OVERRIDE SWITCHING OF LIGHTING CIRCUITS LABELED "a" AND "b". (ONE BUTTON PER CIRCUIT.)
- PROVIDE 10-BUTTON LOW VOLTAGE SWITCH, LEVITON MODEL # LVS-10N. PROVIDE PROGRAMMING FOR ON/OFF OVERRIDE SWITCHING OF 8 LIGHTING CIRCUITS LABELED "c", "d", "e", "f", "g", "h", "i", AND "j" ON THIS PLAN. ONE BUTTON SHALL BE PROGRAMMED FOR EACH CIRCUIT, AND THE LAST TWO BUTTONS SHALL BE KEPT AS SPARES FOR FUTURE LOADS.
- PROVIDE 2-BUTTON LOW VOLTAGE SWITCH, LEVITON MODEL # LVS-02N. PROVIDE PROGRAMMING FOR ON/OFF OVERRIDE SWITCHING OF LIGHTING CIRCUITS LABELED "k" AND "l". (ONE BUTTON PER CIRCUIT.)
- PROVIDE 2-BUTTON LOW VOLTAGE SWITCH, LEVITON MODEL # LVS-02N. PROVIDE PROGRAMMING FOR ON/OFF OVERRIDE SWITCHING OF LIGHTING CIRCUITS LABELED "m" AND "n". (ONE BUTTON PER CIRCUIT.)
- PROVIDE 4-BUTTON LOW VOLTAGE SWITCH, LEVITON MODEL # LVS-04N. PROVIDE PROGRAMMING FOR ON/OFF OVERRIDE SWITCHING OF LIGHTING CIRCUITS LABELED "o" AND "p". (ONE BUTTON PER CIRCUIT.) LABEL TWO BUTTONS AS SPARES.
- PROVIDE 3-BUTTON LOW VOLTAGE SWITCH, LEVITON MODEL # LVS-03N. PROVIDE PROGRAMMING FOR ON/OFF OVERRIDE SWITCHING OF LIGHTING CIRCUITS LABELED "q", "r" AND "s". (ONE BUTTON PER CIRCUIT.)
- EXTEND CIRCUITRY TO EXHAUST FAN SERVING THIS SPACE LIGHTS AND FAN SHALL BE SWITCHED TOGETHER. SEE SHEET E2.1. COORDINATE WITH HVAC CONTRACTOR.
- RELAY PANEL RPI SHALL BE LEVITON Z-MAX TYPE R48MD-136, WITH INTEGRATED ASTRONOMIC TIME CLOCK AND (26) SINGLE-POLE RELAYS. PROVIDE INSTALLATION, PROGRAMMING AND ALL SERVICES TO COMPLETELY INSTALL FULLY FUNCTIONAL LIGHTING CONTROL SYSTEM PER MANUFACTURER'S RECOMMENDATIONS AND SPECIFICATIONS. PROVIDE ADDITIONAL (3) TWO-POLE RELAYS IN RPI.
- PROVIDE 3-POSITION (OPEN/OFF/CLOSED) DRIVE-THRU LANE SWITCH FOR CONTROL OF DRIVE-THRU LANE SIGN. SWITCH SHALL BE SIGNAL-TECH MODEL # 56. INSTALL PER MANUFACTURER'S RECOMMENDATIONS. SEE DRIVE-THRU SIGN CONTROL DIAGRAM ON THIS SHEET. SEE LOCATION OF SIGNS ON ENLARGED DRIVE-THRU LIGHTING PLAN ON SHEET E2.1. COORDINATE WITH SIGN INSTALLER.
- PROVIDE TOGGLE SWITCH TO CONTROL ATM LANE SIGN. SEE LOCATION OF ATM SIGN ON ENLARGED DRIVE-THRU LIGHTING PLAN ON SHEET E2.1. COORDINATE WITH SIGN INSTALLER.
- EXTEND SWITCHING TO DRIVE-THRU LANE SIGNS. SEE SHEET E2.1 FOR SIGN LOCATIONS.
- EXTEND SWITCHING TO ATM SIGN. SEE SHEET E2.1 FOR SIGN LOCATION.
- PROVIDE 120V CONNECTION TO ILLUMINATED BUILDING SIGN. COORDINATE WITH SIGN INSTALLER.
- PROVIDE FIXTURE WITH SWITCHED AND UNSWITCHED CIRCUIT. CONNECT UNSWITCHED CIRCUIT TO EMERGENCY BATTERY.
- FIXTURE INSTALLED ON MILLHOOK BY G.C. COORDINATE IN FIELD.
- PROVIDE WALL-MOUNTED INCANDESCENT DIMMER, LEVITON MODEL # IPI06-LAW. SWITCH TYPE "M" FIXTURES AS SHOWN.

→ INDICATED LOCATIONS OF EMERGENCY FIXTURES

→ INDICATES LOCATION OF EXIT SIGNS

brandpartners

BrandPartners Group, Inc.
10 Main Street
Rochester, NH 03839
Phone: 603.335.1400
Fax: 603.335.1765

ENGINEER



SHREMSHOCK ENGINEERING, INC.

6130 S. Sunbury Road
Westerville, OH 43081
(614)545-4550 p
(614)545-4555 f
info@shremshock.com
www.shremshock.com

SAI 07239

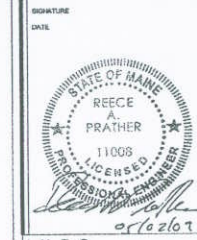
TITLE LIGHTING PLAN

SCALE 1/4" = 1'-0"

CLIENT

UNIVERSITY CREDIT UNION

1071 BRIGHTON AVENUE
PORTLAND, ME 04102



INFO

PATH:	
ISSUE DATE:	05-01-07
DRAWN BY:	BAO
CHECKED BY:	RAP
REVISION:	
1.	
2.	
3.	
4.	
5.	
6.	
7.	
8.	
9.	
10.	
11.	
12.	
13.	

© 2005 BrandPartners Inc. All rights reserved. Information, material, and designs in this document are proprietary to and owned by BrandPartners Inc. and may not be disclosed to any third party, reproduced, copied or in a global computer network, or distributed in any way without the written consent from BrandPartners Inc.

E1.1