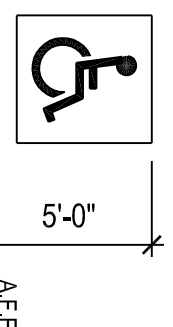


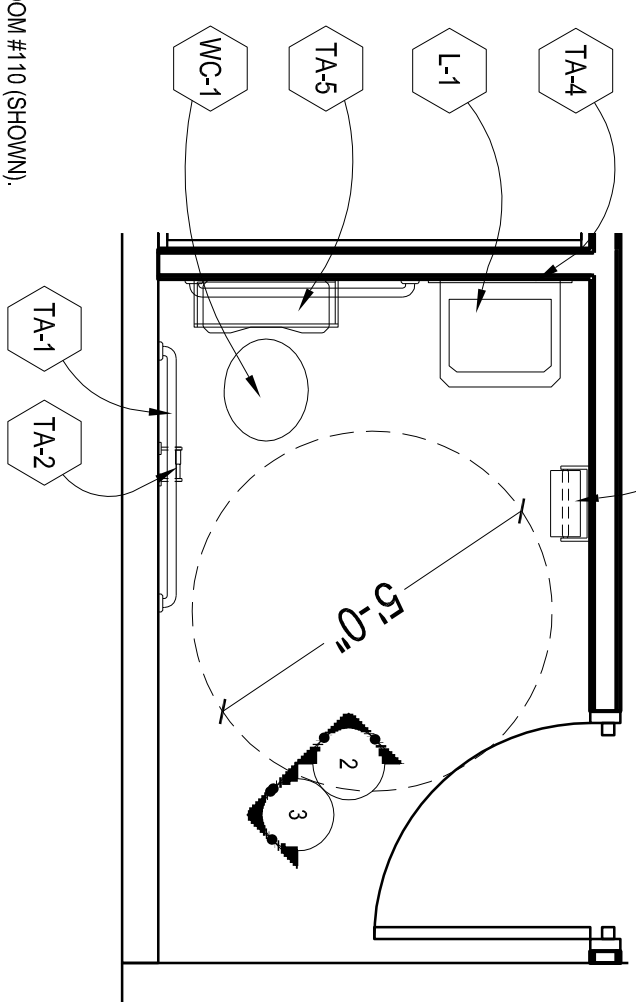
ALL EXISTING PLUMBING FIXTURES TO BE REUSED.
GENERAL CONTRACTOR TO COORDINATE WITH
PROPERTY MANAGER ON ANY UPGRADING OF EXISTING
FIXTURES.

SIGNAGE
HANDICAP TACTILE SIGN
TO BE PLACED ALONG SIDE
THE LATCH SIDE OF THE DOOR
(SUPPLIED & INSTALLED
BY CONTRACTOR) SIGN TO BE
APPROVED BY HFC.



NOTE:
ALL DESIGNATED BARBERSHOP-
FIXTURES & ACCESSORIES TO BE
INSTALLED IN COMPLIANCE WITH THE
AMERICANS WITH DISABILITIES ACT.

NEW ACCESSIBLE TOILET ROOM #110 (SHOWN)
EXISTING TOILET ROOM #109 (SIMILAR).



1 EXISTING TOILET ROOM PLANS (TYP.)

SCALE: 3/8"=1'-0"

TAG	DESCRIPTION	MPFR/MODEL	REMARKS
L-1	VITREOUS CHINA LAVATORY	KOHLER "CHESPEAKE" #K-1725	"CHICAGO FINISHT" #8850P PECK MOUNTED SINK SUBJECT W/ E3 SPECTRO AERATOR & 890 LEBER-HANDELS "KOHLER" #1385 OFFSET DRAIN. KOHLER IC1385 SUPPLIES W/ STUDS 1 1/4" CAST BRASS "P" TAP
WC-1	VITREOUS CHINA WATER CLOSET, 16 GPF ELONGATED BOWL, PRESSURE ASSIST.	KOHLER "HIGHLINE" #K-3544, 12" ROUGH-IN	SCREEN DRIVER ANGLE STOP; KOHLER #4652 CLOSED SEAT. PROVIDE (R/R) RIGHT HAND TRIP. EVER WHEN ADJACENT WALL IS ON THE LEFT.
TA-1	1 1/4" DIA. STAINLESS STEEL GRAB BAR @ HANDICAP HEIGHT: 36" AFF.	CENTURIAN SATIN #B-938	
TA-2	SURFACE MOUNTED TOILET PAPER DISPENSER	BOBRICK #B-1983	
TA-3	SURFACE MOUNTED ROLL-TYPE PAPER TOWEL DISPENSER	BOBRICK #B-243	
TA-4	SURFACE MOUNTED MIRROR	24"x36"	
TA-5	SURFACE MOUNTED MEDICINE CABINET ABOVE TOILET	MILLS PRIDE #QJ24282C CLASSIC FINISH VANITY	24"x30"x6"
HW-1	SURFACE MOUNTED INSTANT HOT WATER HEATER	TEMPAC SP3512 120V	ONLY INSTALL (1) 120 VOLT HARD WIRED UNIT IF IT IS NOT PRACTICAL TO USE EXISTING HOT WATER HEATER
1.	G.C. TO VERIFY EXISTING TOILET ROOM FIXTURES ARE IN COMPLIANCE WITH ADA.		

5 TOILET ROOM SCHEDULE

SCALE:

PLUMBING SYSTEM

- A. SCOPE
- FURNISH ALL PLUMBING FIXTURES, EQUIPMENT AND MATERIAL INDICATED AND SHOWN ON DRAWING AND INSTALL COMPLETE AND PLACE IN PROPER OPERATION.
 - PLUMBING SYSTEMS TO ESSENTIALLY CONSIST OF THE FOLLOWING:
 - SANITARY WASTE AND VENT PIPING AND SANITARY SEWER EXTENDED TO EXIST. BUILDING FACILITIES.
 - DOMESTIC WATER EXTENDED FROM EXISTING BUILDING FACILITIES AND DISTRIBUTION SYSTEM TO NEW FIXTURES.
 - PLUMBING FIXTURES AND EQUIPMENT WITH ALL REQUIRED TRIM, CONTROLS AND ACCESSORIES.
 - INSULATION OF PLUMBING ITEMS.
 - OTHER PLUMBING ITEMS THAT MAY BE INDICATED OR SPECIFIED.
- B. EXCAVATION AND BACKFILL
- PERFORM ALL EXCAVATION AND BACKFILL REQUIRED FOR INSTALLATION OF BELOW-GRADE PIPING.
 - EXCAVATE TO DEPTH REQUIRED TO INSTALL PIPING AT REQUIRED LEVEL AND PITCH. PIPE TO BE LAID ON SAND BEDDING TO GIVE UNIFORM BEARING ALONG LENGTH OF PIPE.
 - BACKFILL WITH BEDDING MATERIAL TO A MINIMUM OF TWELVE (12) INCHES ABOVE TOP OF PIPES AND COMPACT. BALANCE OF BACKFILL SHALL BE SAND. ALL BACKFILL SHALL BE COMPACTED IN MAXIMUM TWELVE (12) INCH LAYERS.
 - PATCH FLOOR TO MATCH EXISTING.
- C. SANITARY SEWERS
- INSTALL SANITARY SEWERS, STACKS, VENTS, FLOOR DRAINS, AND CLEANOUTS FOR PROJECT AND EXTEND TO EXISTING BUILDING FACILITIES AS INDICATED ON THE DRAWINGS.
 - SEWERS TO BE PITCHED A MINIMUM OF 1/4" PER FOOT FOR 3" SIZES AND UNDER AND 1/8" PER FOOT FOR 4" SIZES OR TO GRADES INDICATED ON DRAWINGS.
 - CHANGES IN DIRECTION AND BRANCH CONNECTIONS SHALL BE MADE WITH APPROVED DRAINAGE FITTINGS COMPATIBLE WITH THE PIPING SYSTEM MATERIAL IN WHICH IT IS INSTALLED.
 - ALL FITTINGS AND SANITARY DRAINS SHALL BE EXTENDED AS INDICATED ON DRAWINGS AND IN ACCORDANCE WITH CODE. VENTS ARE TO BE EXTENDED THROUGH ROOF AS INDICATED ON DRAWING AND FLASHED WITH 4 LB. LEAD WITH VENT FLASHING TOP TORNEED DOWN TWO (2) INCHES MINIMUM INSIDE PIPE.
 - SEWER AND VENT MATERIAL SHALL BE AS FOLLOWS:
 - BELOW-GRADE INSIDE BUILDING - PVC-DWV PLASTIC ASTM D-1785 WITH ASTM D-2665 DWV SOCKET FITTINGS SOLVENT
 - ABOVE-GRADE SANITARY WASTE AND VENTS 1) 1 1/2" AND ABOVE - PLASTIC SEWER PIPE, NO HUB SYSTEM CISP 1,301-178.
- D. CLEANOUTS
- CLEANOUTS SHALL BE INSTALLED FLUSH WITH FINISHED FLOOR WITH PLATED COVERS.

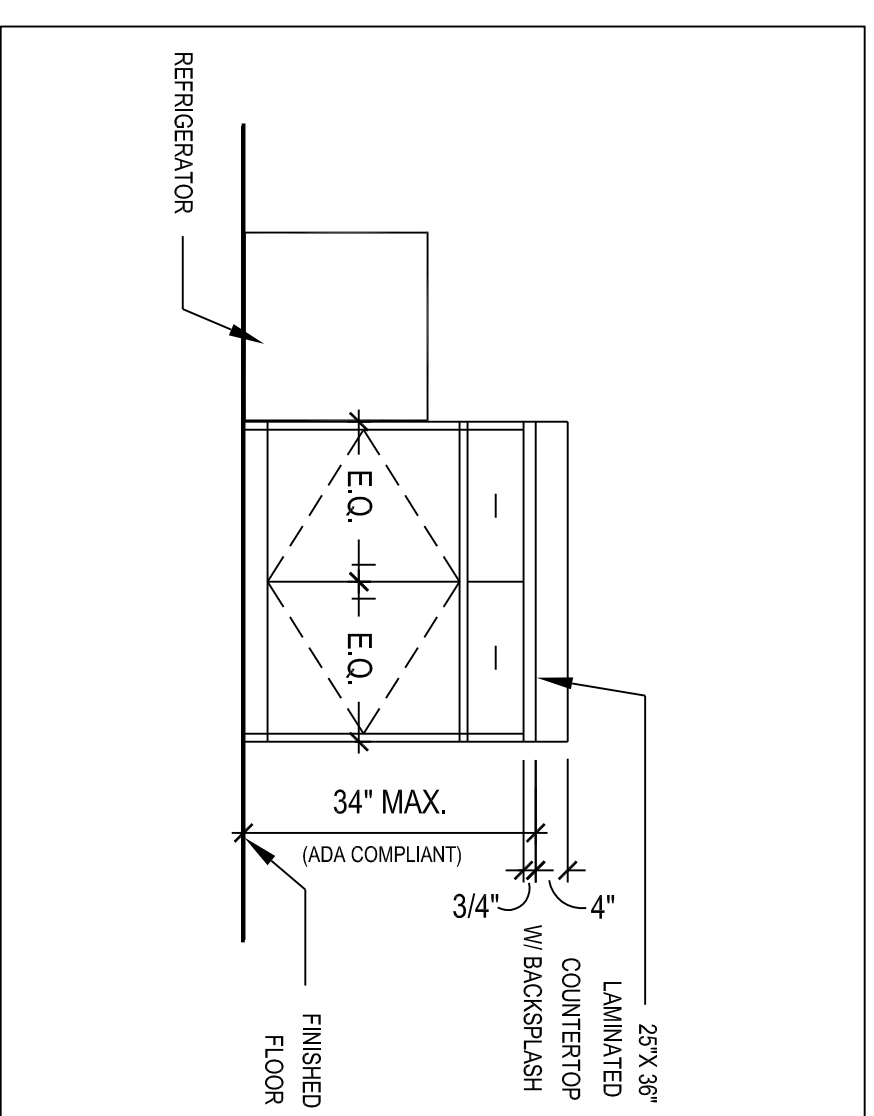
E. FIXTURES AND EQUIPMENT

- FURNISH ALL FIXTURES AND EQUIPMENT INDICATED AND SCHEDULED ON DRAWINGS, COMPLETE WITH ALL ACCESSORIES, CONTROLS AND INSTALLATION ITEMS REQUIRED.
- INSTALL IN FULL ACCORDANCE WITH MANUFACTURER'S RECOMMENDATIONS AND PLACE IN SATISFACTORY OPERATION.
- FIXTURES AND EQUIPMENT SHALL BE AS FOLLOWS:

MARK	ITEM	DESCRIPTION
WC-1	WATER CLOSET	SEE TOILET SCHEDULE SHEET A-4
L-1	LAVATORY	SEE TOILET SCHEDULE SHEET A-4
FD-1	FLOOR DRAIN	J.R. SMITH SERIES 2010-F37 ANTI-FLOOD RIM, NICKEL BRONZE STRAINER
- WATER PIPING
 - EXTEND DOMESTIC WATER FROM EXISTING BUILDING FACILITIES AS INDICATED ON DRAWINGS. INSTALL WATER METER WITH REMOTE REGISTER AS INDICATED ON DRAWINGS AND INSTALL DOMESTIC WATER DISTRIBUTION PIPING TO ALL FIXTURES AND EQUIPMENT REQUIRING SAME. INCLUDE ALL FITTINGS, VALVES, HANGERS, AND OTHER ACCESSORIES REQUIRED FOR COMPLETE INSTALLATION.
 - INCLUDE UNIONS, OR OTHER DISCONNECT MEANS, STOPS OR VALVES FOR ISOLATION OF FIXTURES AND EQUIPMENT. VALVES TO BE FULLY COMPATIBLE WITH PIPING FOR SERVICE INTENDED AS MANUFACTURED BY NIBCO, GRANE OR OTHER APPROVED MANUFACTURER. INCLUDE HOSE OR DRAIN VALVES AT LOW POINTS WHERE FIXTURES CANNOT BE USED FOR DRAINAGE.
 - INSTALL AIR CUSHIONS AT EACH FIXTURE OR WHERE REQUIRED TO PREVENT WATER HAMMER.
 - HANGERS ON INSULATED PIPE TO BE OUTSIDE OF INSULATION, SIZED ACCORDINGLY AND WITH SUFFICIENT SADDLE TO PROJECT INSULATION.
 - WATER PIPING ABOVE GRADE SHALL BE TYPE "W" HARD COPPER ASTM B 88-892 WITH WROUGHT COPPER FITTINGS ASTM B 6, 22-1890 AND NON-LEAD OR ANTIMONY SOLDER JOINTS.
 - FLUSH, VENT AND SANITIZE ALL WATER PIPING WITH EQUIVALENT SOLUTION OF 50 PPM OF AVAILABLE CHLORINE IPRON COMPLETION.
- HANGERS AND SUPPORTS ARE TO BE PROVIDED TO PROPERLY SUPPORT, SECURE AND ALIGN PIPING AND TO MEET CONDITIONS, SPACING TO COMPLY WITH ASHRAE STANDARDS AND OBCB 4101.2-51-11 REQUIREMENTS.
- INSULATION
 - INSULATE ALL ABOVE-GRADE HOT AND COLD WATER PIPING WITH (1/2) INCH THICK MOLDED FIBERGLASS HAVING TYPE ASJ JACKET AND MANUFACTURED BY OWENS-CORNING FIBERGLASS COMPANY.
 - INCLUDE INSULATION OF FITTINGS AND VALVES. KEEP VAPOR BARRIERS INTACT. APPLY TO MANUFACTURER'S RECOMMENDATIONS.
 - INSULATE ALL EXPOSED WASTE AND SUPPLY PIPING UNDER LAVATORIES WITH THE HAND-LAY GUARD INSULATION KIT BY TRIEBRO OR EQUAL.

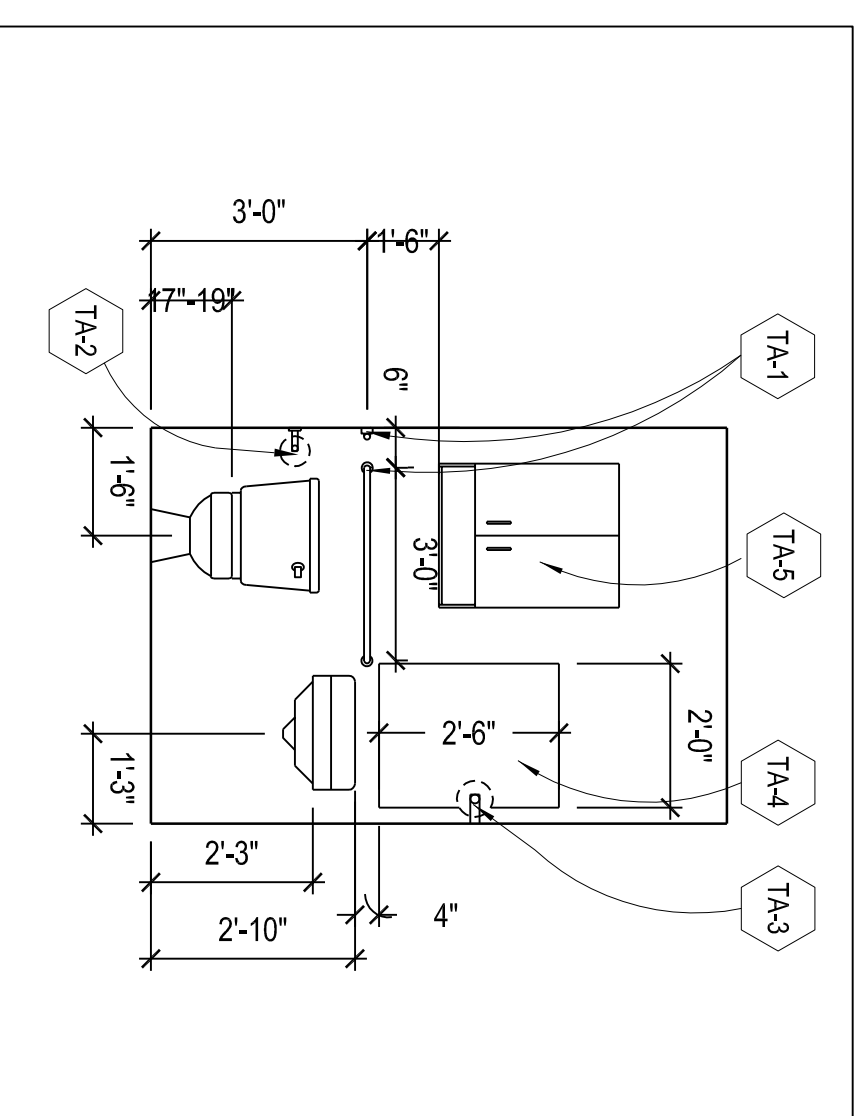
6 KITCHEN ELEVATION

SCALE:



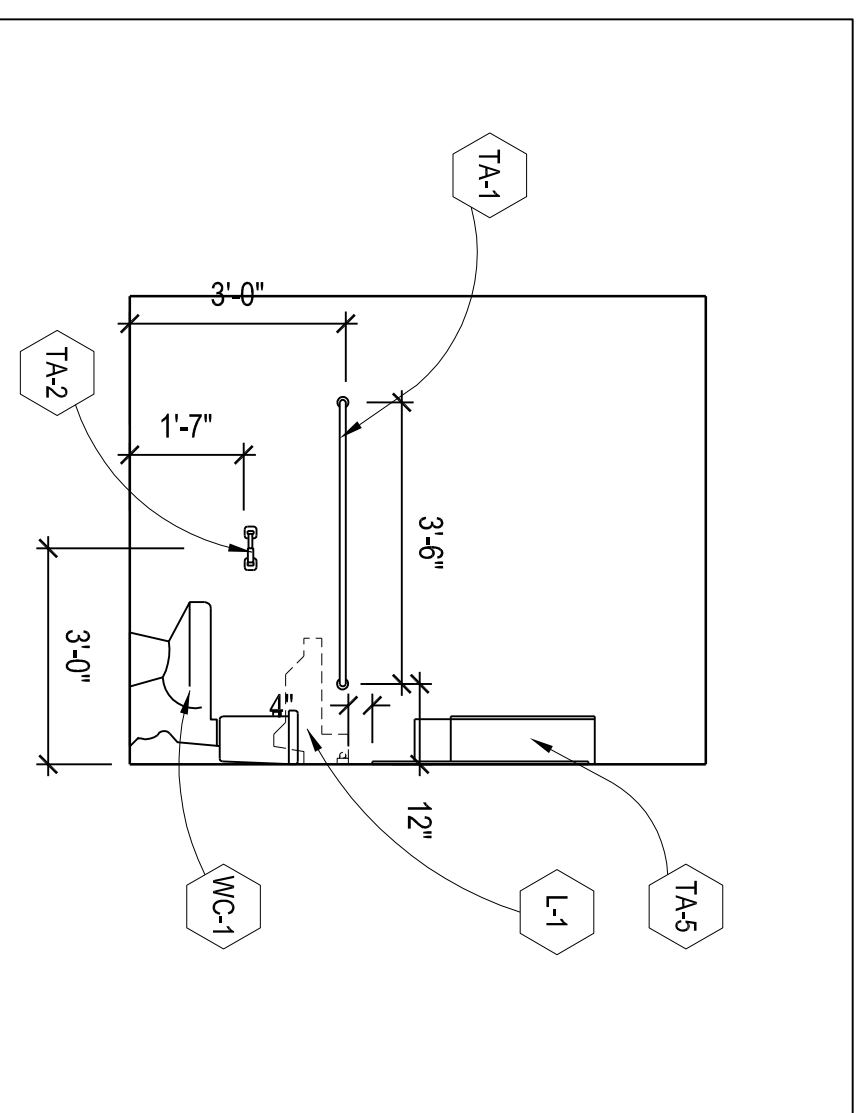
2 EXISTING TOILET ROOM ELEVATION (TYP.)

SCALE: 3/8"=1'-0"



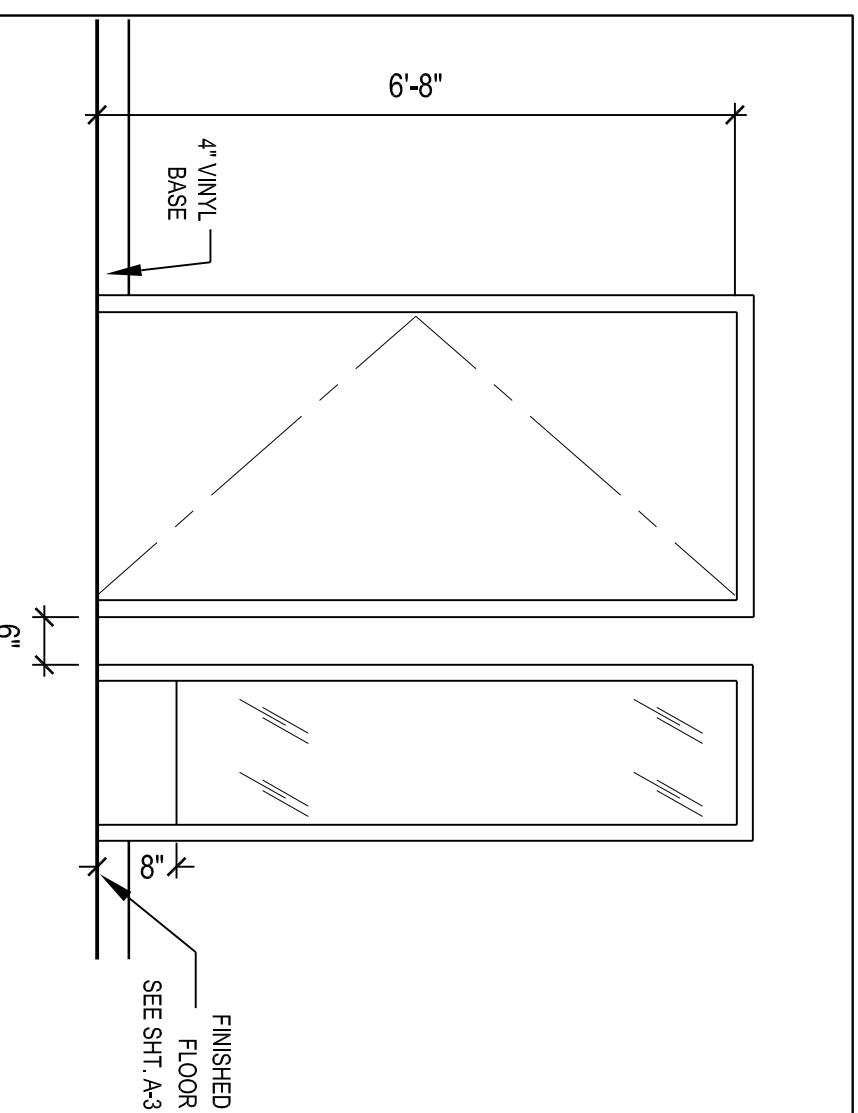
3 EXISTING TOILET ROOM ELEVATION (TYP.)

SCALE: 3/8"=1'-0"



4 ELEVATION @ CLOSING ROOM

SCALE:



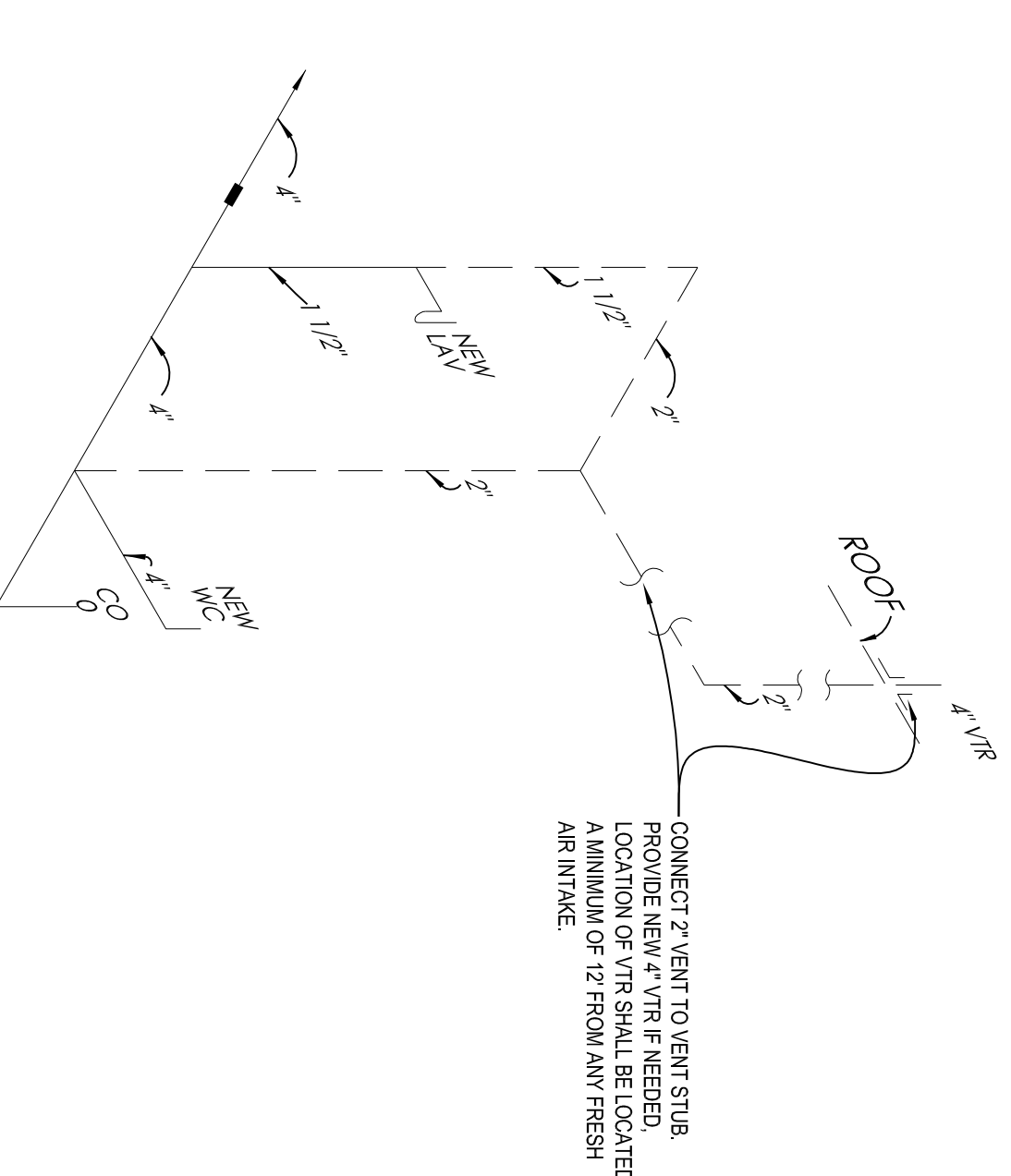
7 NOTES

SCALE:

8 RISER DIAGRAM

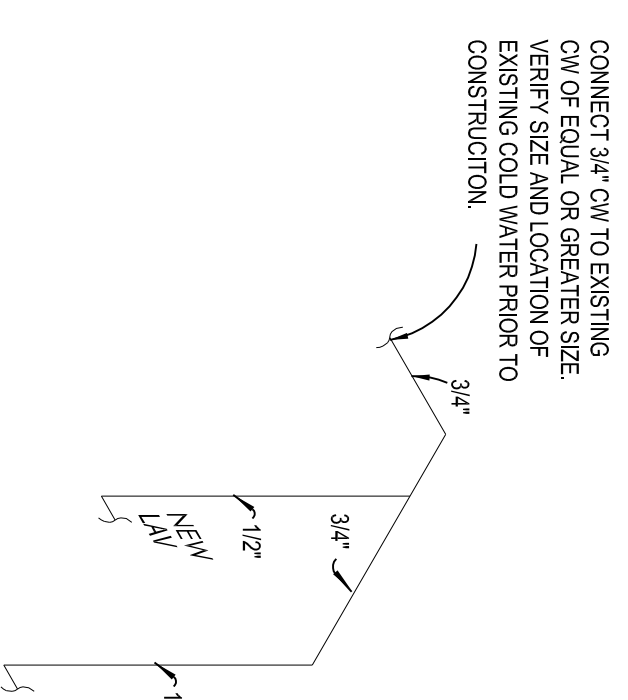
SCALE:

TYPICAL SANITARY STACK DIAGRAM



CONNECT 2" VENT TO VENT STACK.
PROVIDE NEW 4" VTR IF NEEDED.
LOCATION OF VTR SHALL BE LOCATED
A MINIMUM OF 12" FROM ANY FRESH
AIR INTAKE.

HOT & COLD WATER PIPING DIAGRAM (TYP.)



CONNECT 3/4" ON TO EXISTING
ON OR EQUAL OR GREATER SIZE.
VERIFY SIZE AND LOCATION OF
EXISTING COLD WATER PRIOR TO
CONSTRUCTION.

NOTE: G.C. TO VERIFY ALL EXISTING
PLUMBING CONDITIONS AND
ADJUST AS NEEDED

BENEFICIAL FINANCE
1041 BRIGHTON AVE.
PORTLAND, ME. 04102

**PLUMBING PLANS, ELEVATIONS
& DETAILS**



CHIPMAN ADAMS LTD.
Architects
1550 N. Northwest Highway, Suite 400
Park Ridge, Illinois 60068-1463
T 847-298-6900 F 847-298-6966



APPROVED
I HEREBY CERTIFY THAT THESE PLANS HAVE BEEN PREPARED
BY ME OR UNDER MY CLOSE PERSONAL SUPERVISION AND
REGULATIONS AND REQUIREMENTS OF PROFESSIONAL
ENGINEERING AND ARCHITECTURE. I AM A LICENSED
PROFESSIONAL ENGINEER AND ARCHITECT IN THE STATE OF
ILLINOIS.

BRANCH #
56-1700

Drawn By
LO

Checked By
WL

Scale
AS NOTED

Date
10-31-05

306 No.
05-2242

Sheet No.
A-4