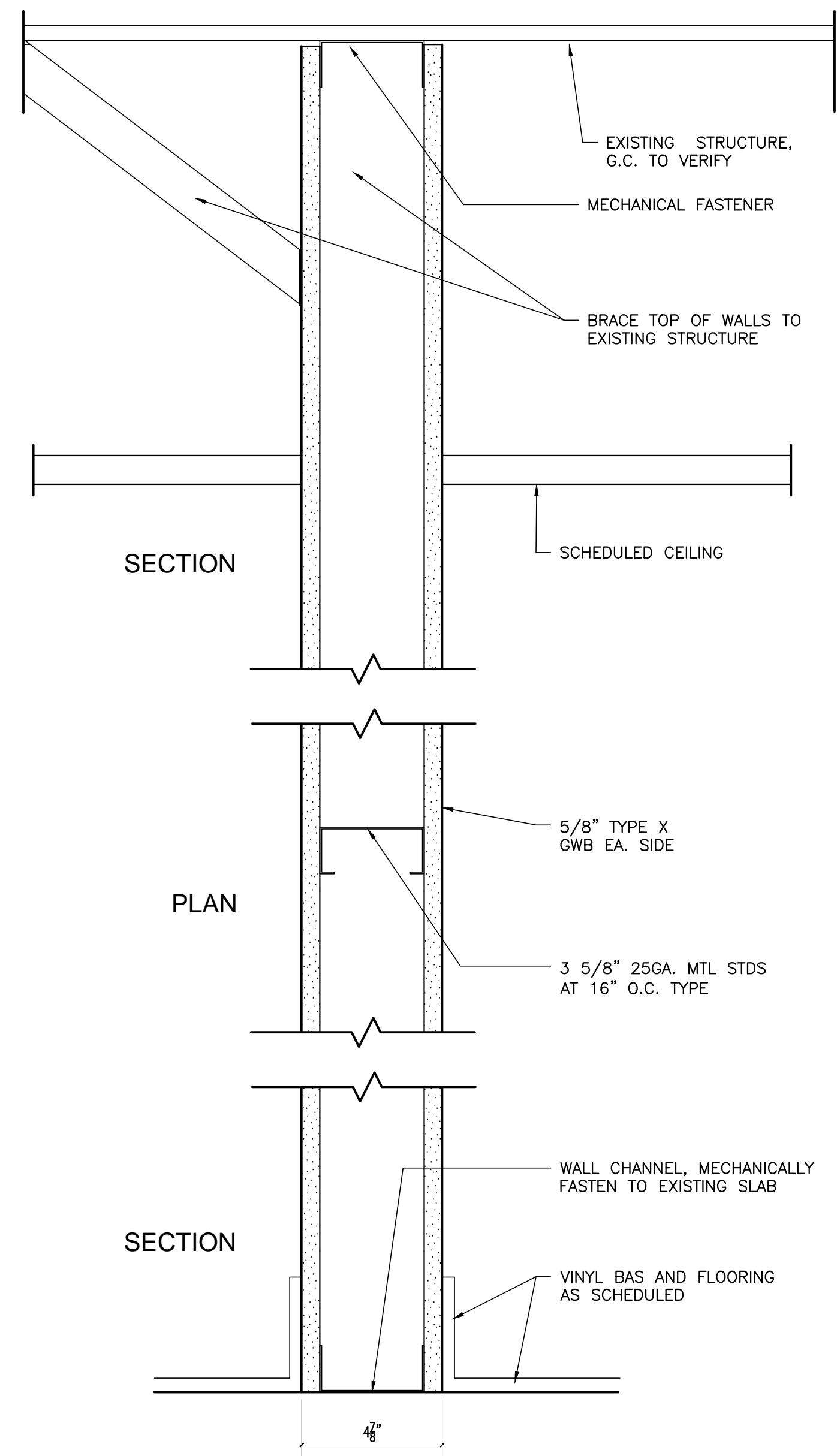


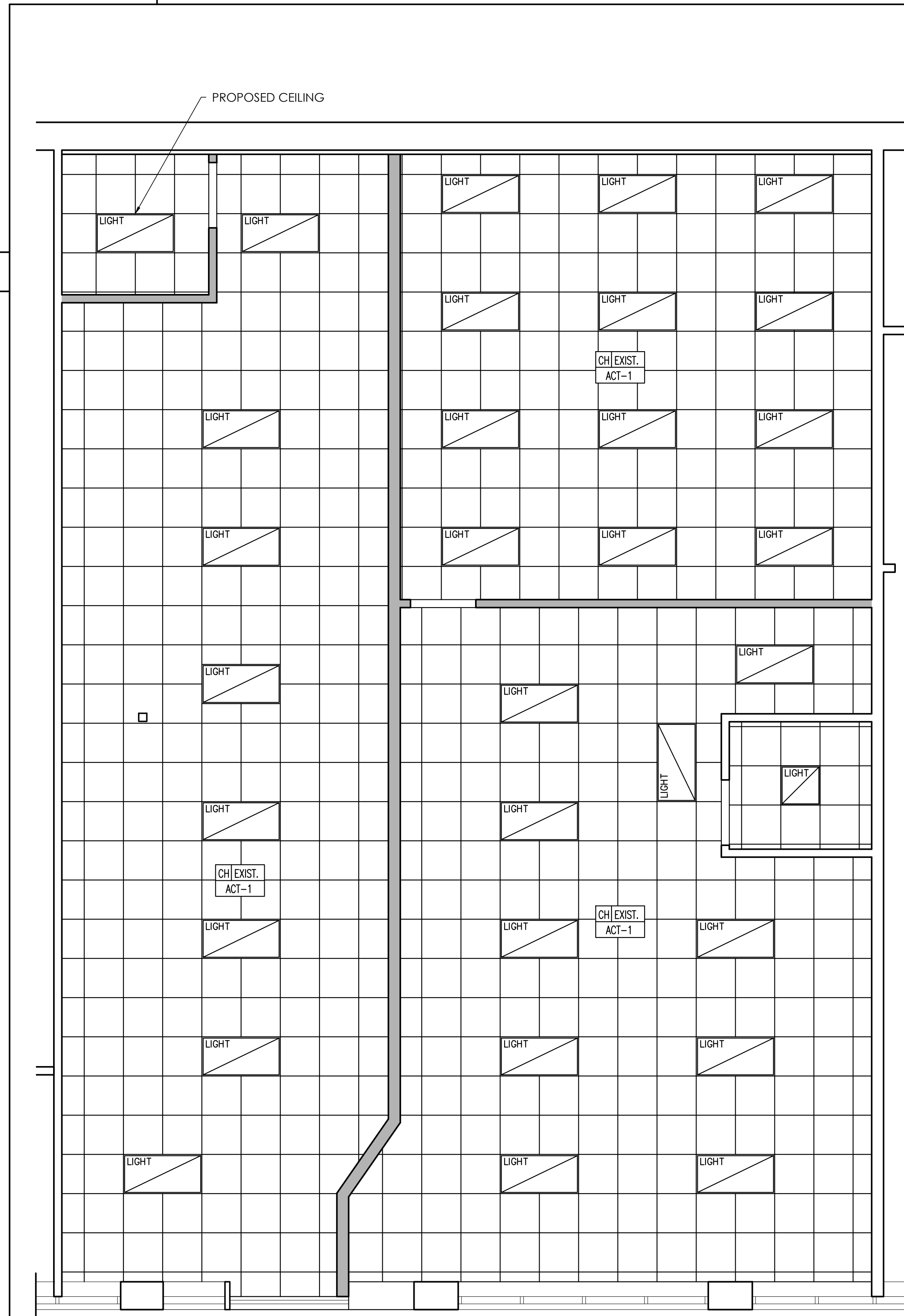
LIFE SAFETY SYMBOLS LEGEND

	DIRECTIONAL EXIT LIGHT
	AUTOMATIC EMERGENCY LIGHT
	FIRE EXTINGUISHER - WALL MOUNTED

5 NTS BUILDING KEY PLAN AND OCCUPANCY



2 3"=1'-0" TYPICAL 1 HOUR RATED WALL

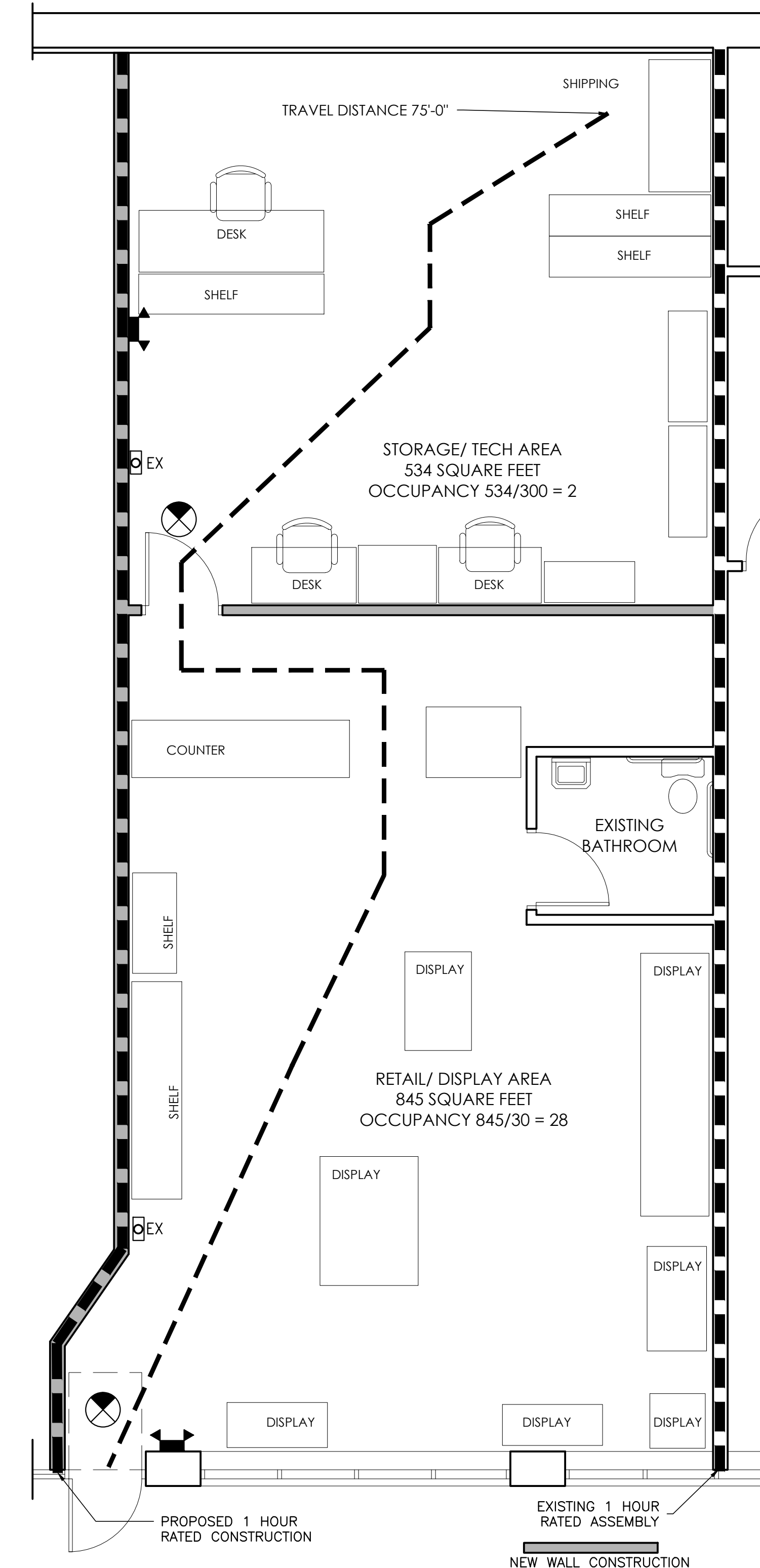


3 1/4"=1'-0" REFLECTED CEILING PLAN

PROJECT DATA

USE	BUSINESS		
OCCUPANCY CLASSIFICATION	BUSINESS		
OCCUPANCY CALCULATION			
GROSS S.F. AREA - MERCANTILE	845 S.F.	845/30	28
GROSS S.F. AREA - REPAIRS AND SHIPPING	534 S.F.	534/100	5.3
CALCULATED OCCUPANT LOAD BASED ON GROSS SQUARE FOOTAGE: 33.3			
EXITS AND EXIT ACCESS DOORWAYS			
EXITS	REQUIRED	PROVIDED	
	1	1	
DOOR WIDTH	32" MINIMUM	34"	
COMMON PATH OF TRAVEL	75'-0"	75'-0"	
EXIT ACCESS TRAVEL DISTANCE (W/O SPRINKLERS)	150'-0" (NFPA)	75'-0"	
DEAD END CORRIDORS	20'-0"	NA	
EGRESS WIDTH:			
OCCUPANTS x (0.2 - OTHER EGRESS COMPONENTS)			
33 x 0.2 = 6.6" WIDTH REQUIRED	6.6"	34"	
PLUMBING FIXTURES			
WATER CLOSETS - MEN/WOMEN	1	1	
LAVATORIES - MEN/WOMEN	1	1	

4 NTS BUILDING CODE INFORMATION



1 1/4"=1'-0" LIFE SAFETY AND EGRESS DIAGRAM

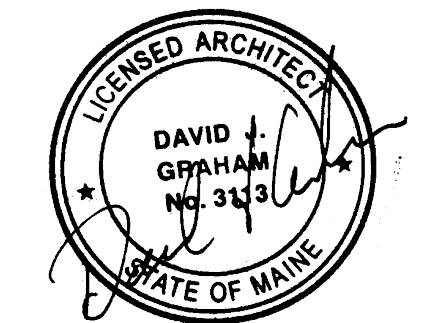
GENERAL CONTRACTOR

STRUCTURAL ENGINEER

MEP ENGINEER

CLIENT

PROJECT
Van Horne & Monti
 Computer and
 Cell Phone Repairs
 1041 Brighton Ave
 Portland, ME 04101



ISSUED FOR PERMIT

INFORMATION

Path: M:/boulos/1041 Brighton

Issue Date: 03/08/16

Drawn By: dijg

Checked By:

Revision:

1. 07/05/16 - ADDED UNIT 10C BATHROOM

2.

3.

4.

TITLE
 LIFE SAFETY &
 REFLECTED CEILING
 PLAN

SCALE
 1/4"=1'-0"

© 2016 Graham Architects. All rights reserved. Information, material, and designs in this document are proprietary to and owned by Graham Architects and may not be disclosed to any third party, reproduced, posted on a global computer information network, or distributed in any way without the written consent from Graham Architects.