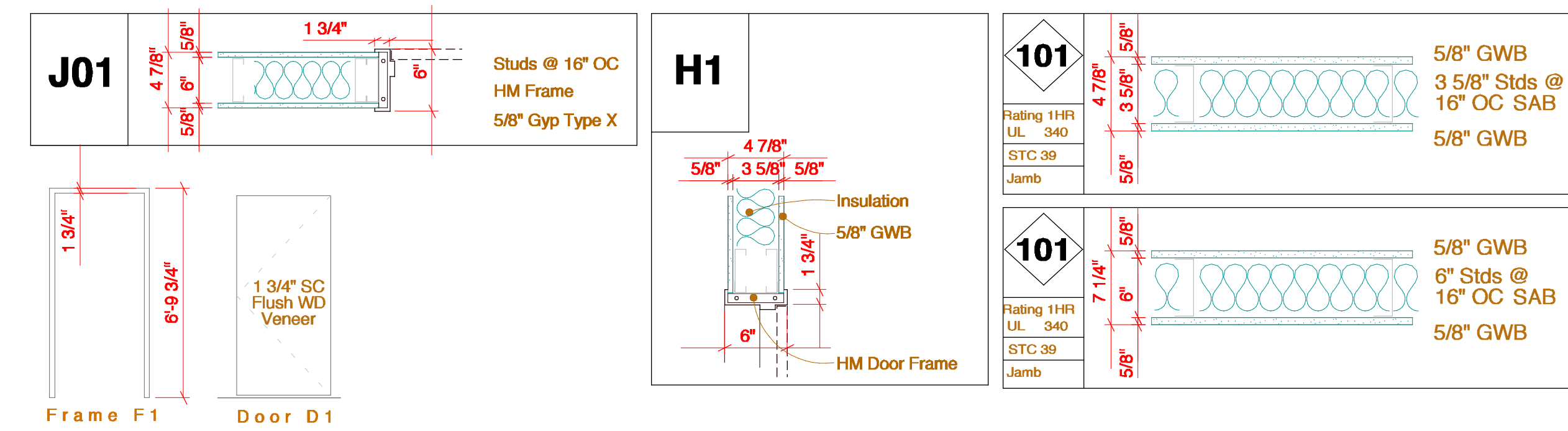


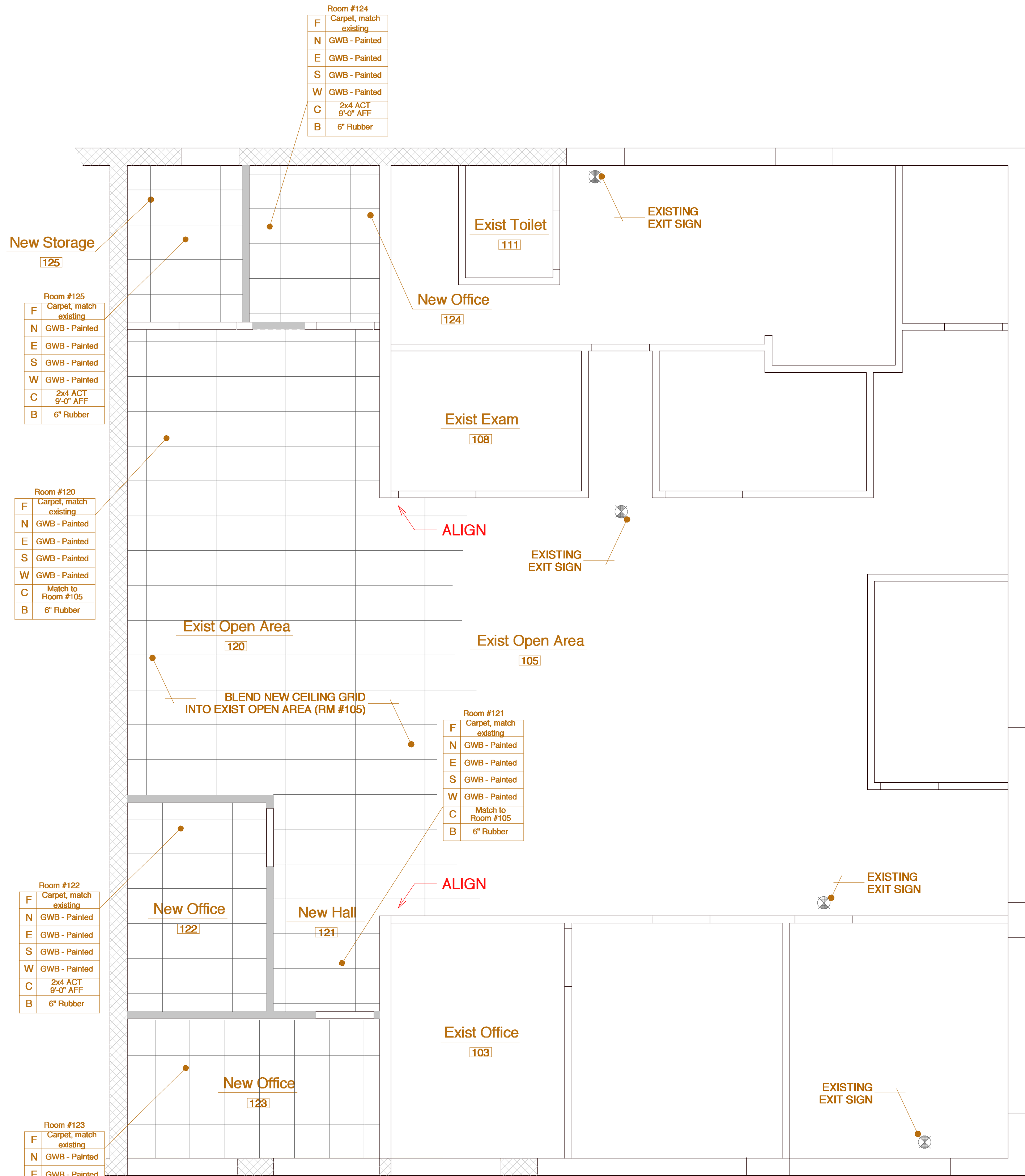
Frame & Door Schedule

DOOR NO.	LOCATION (opens into)	LABEL	MATERIAL	TYPE	FRAME			DOOR		THRESHOLD	UNDERCUT	HARDWARE	SECURITY	REMARKS		
					WIDTH	HEIGHT	DEPTH	HEAD	JAMB							
															TYPE	MATERIAL
101	New Office - Room #122	none	HM	F1	3'-0"	6'-8"	4 7/8"	H1	J01	D1	WD	none	1/2"	D	--	none
102	New Office - Room #123	none	HM	F1	3'-0"	6'-8"	4 7/8"	H1	J01	D1	WD	none	1/2"	D	--	none
103	New Office - Room #125	none	HM	F1	3'-0"	6'-8"	4 7/8"	H1	J01	D1	WD	none	1/2"	D	--	none
104	New Storage - Room #126	none	HM	F1	3'-0"	6'-8"	4 7/8"	H1	J01	D1	WD	none	1/2"	D	--	none

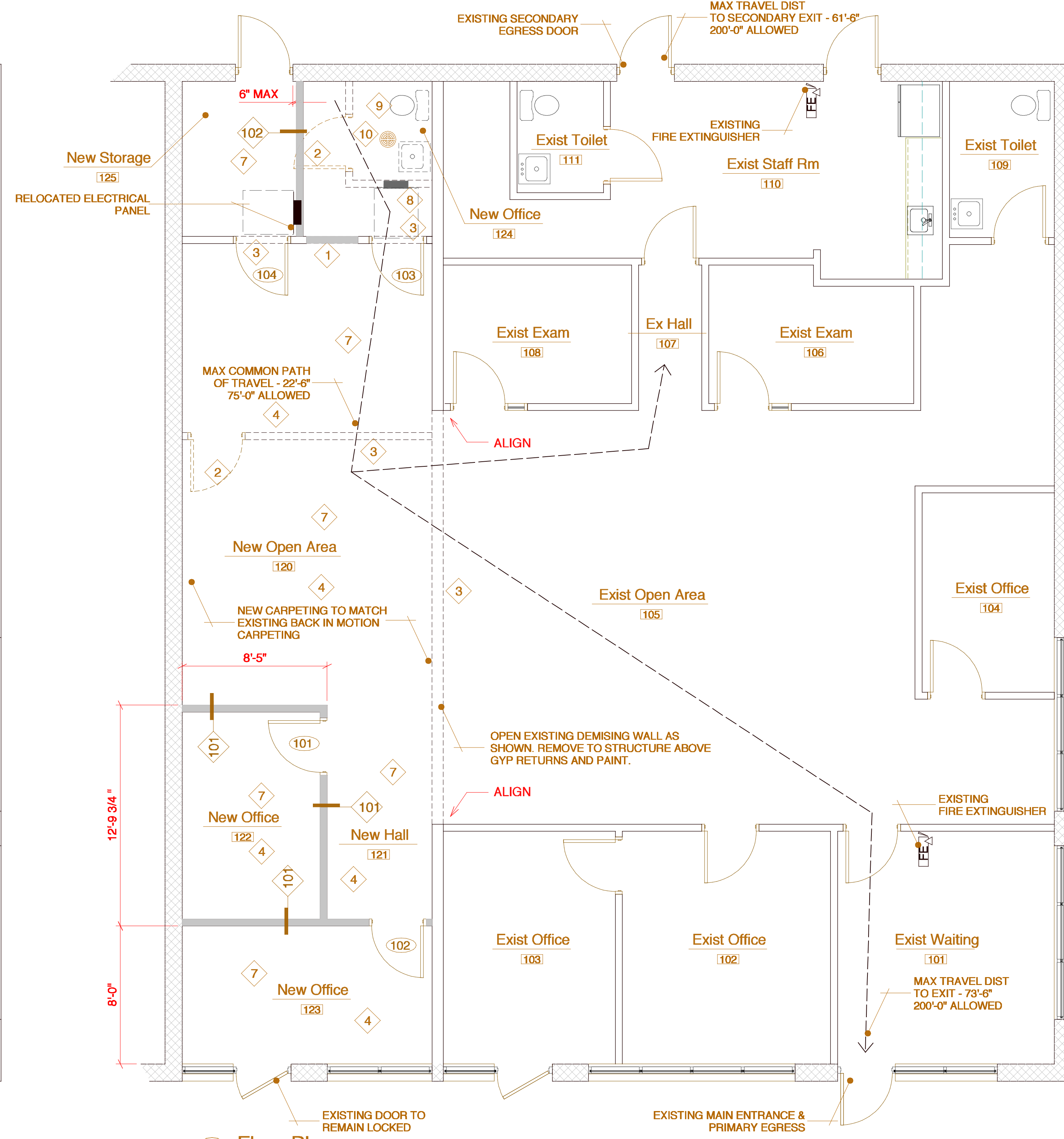


Demolition Notes

- Remove existing door, frame and blocking. Prep opening for infill wall.
- Remove existing door or window.
- Remove existing wall.
- Remove existing flooring, backing and accessories.
- Remove existing plumbing fixture.
- Remove existing lighting fixtures and ceiling material.
- Remove existing electrical panel.
- Remove existing lavatory and toilet cap all water lines, waste lines and floor drain at floor level.
- Remove hot water heater (above ceiling) and cap all water lines at floor level.



20 Reflected Ceiling / Finish Plan

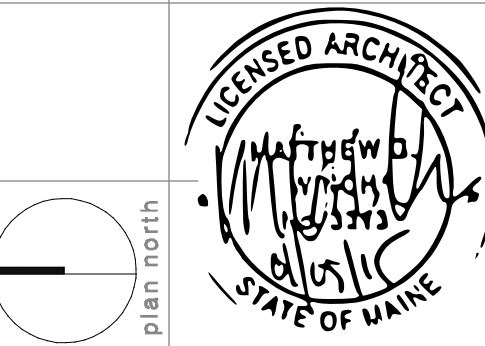


10 Floor Plan



date	revision

Back in Motion
project name
1041 Brighton Ave
Portland, Maine
project location



date	scale	project #	drawing title	drawing number