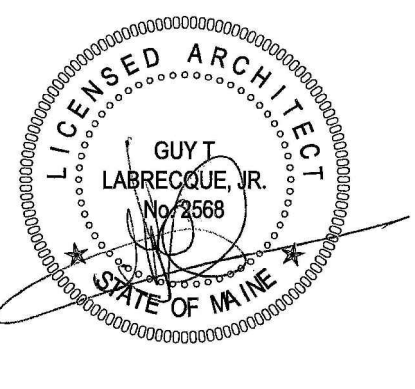




CWS
Architects

434 Cumberland Avenue
Portland, ME 04101
Phone: (207) 774-4441
Fax: (207) 774-4016
www.CWSarch.com



AARON'S RENOVATIONS
1041 BRIGHAM AVENUE
PORTLAND, MAINE 04101

SEI/AARON'S,
INCORPORATED
5108 PIEDMONT ROAD,
SUITE 202
ATLANTA, GA 30350

Owner:

REVISIONS:

Description:

Drawing Title:
ARCHITECTURAL
LIFE SAFETY PLAN

Drawing Number:

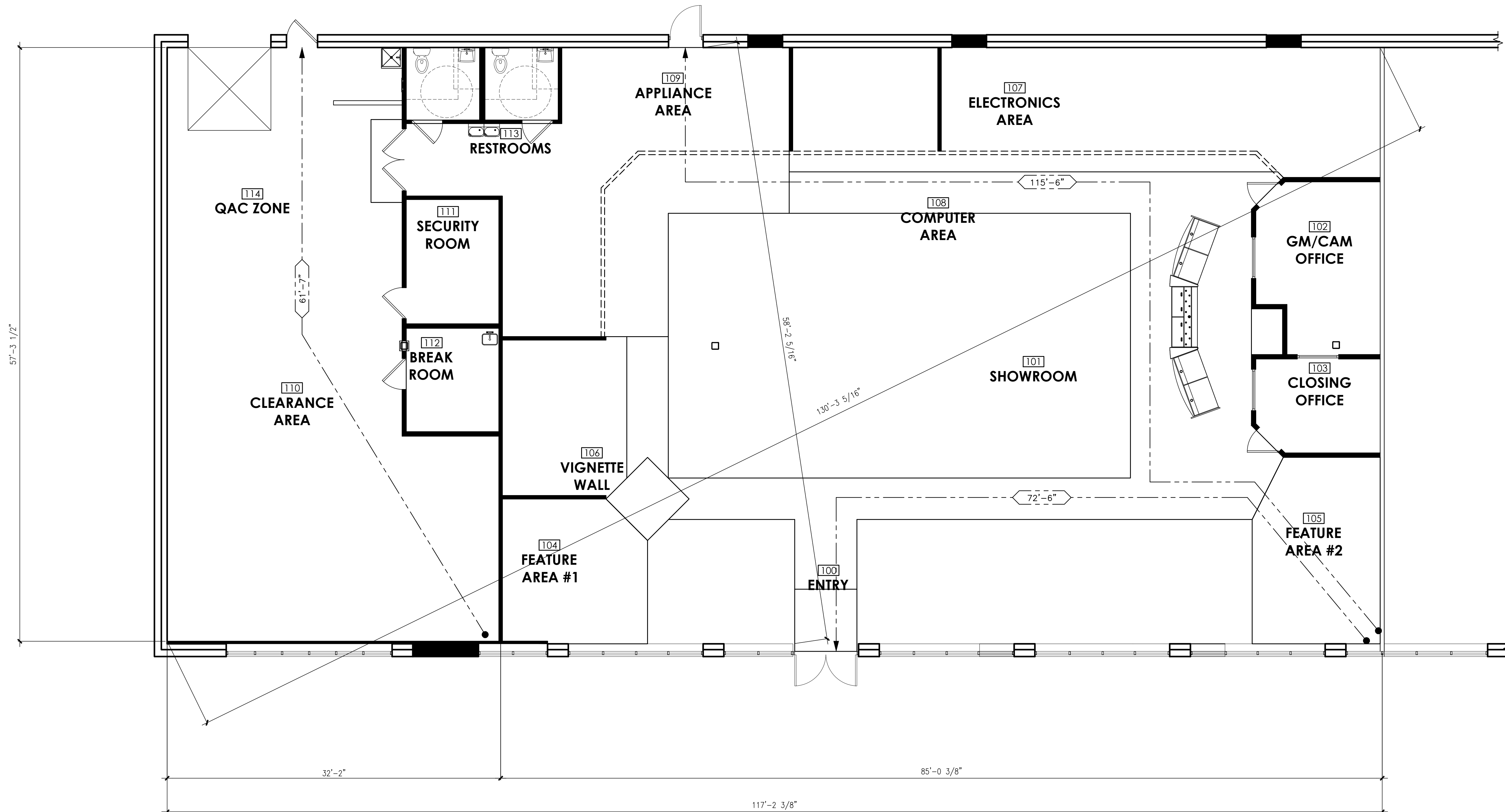
LS1-1

ISSUED FOR CONSTRUCTION

SQUARE FOOTAGE CHART	
SPACE	AREA
CLEARANCE	1857.4 SQ. FT.
SHOWROOM	5248.2 SQ. FT.
TOTAL	7105.6 SQ. FT.

OCCUPANT LOAD AREAS	
SPACE	AREA
OFFICE\BUSINESS USE	644.7 SQ. FT.
SHIPPING\STORAGE USE	1645.4 SQ. FT.
SALES USE	4815.5 SQ. FT.
TOTAL	7105.6 SQ. FT.

PORTABLE FIRE EXTINGUISHERS SHALL BE PROVIDED AT LOCATIONS REQUIRED BY THE IBC/INTERNATIONAL FIRE CODE 2006 AND BY NFPA 101 2006 IN ACCORDANCE WITH NFPA 10. FIRE EXTINGUISHERS SHALL BE PROVIDED SUCH THAT THE MAXIMUM TRAVEL DISTANCE TO AN EXTINGUISHER IS 75'.



A

ARCHITECTURAL LIFE SAFE PLAN

REFERENCED FROM:

SCALE: 3/16" = 1'-0"

2/17/2010 3:38 AM