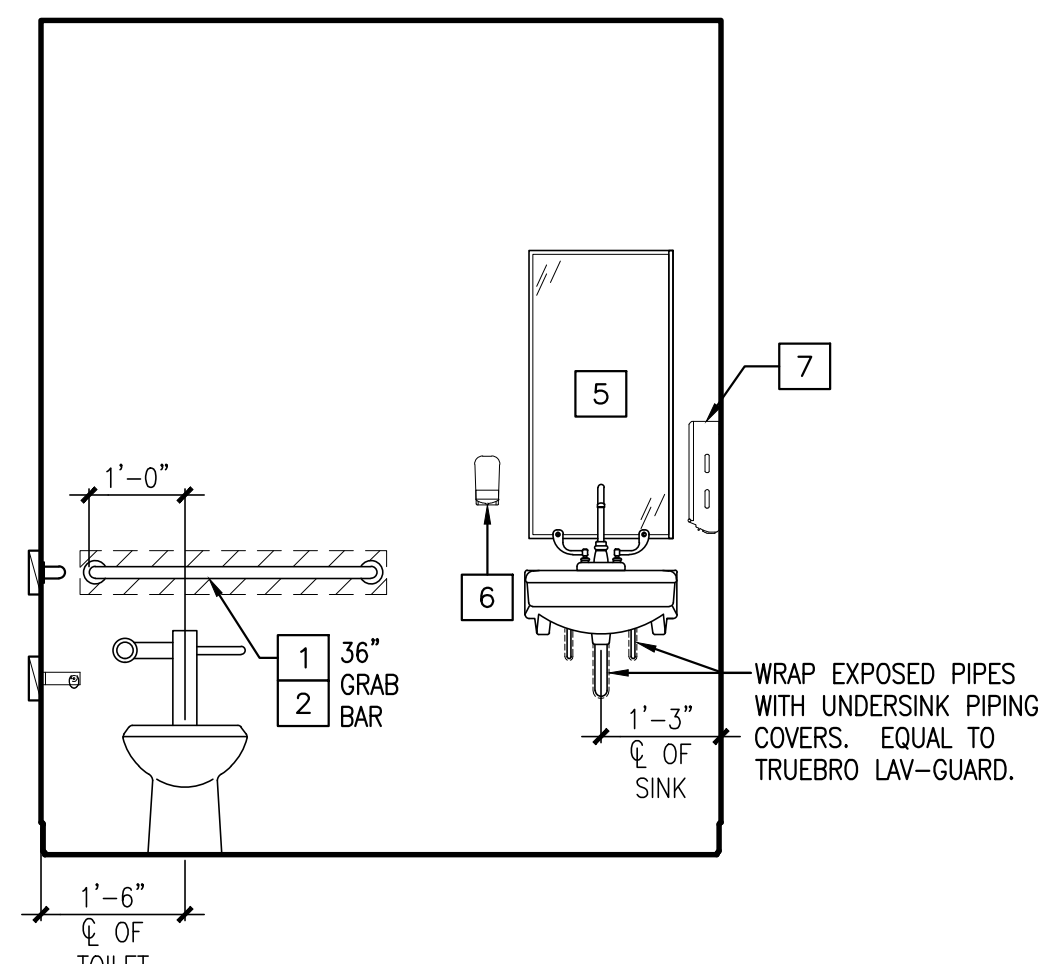
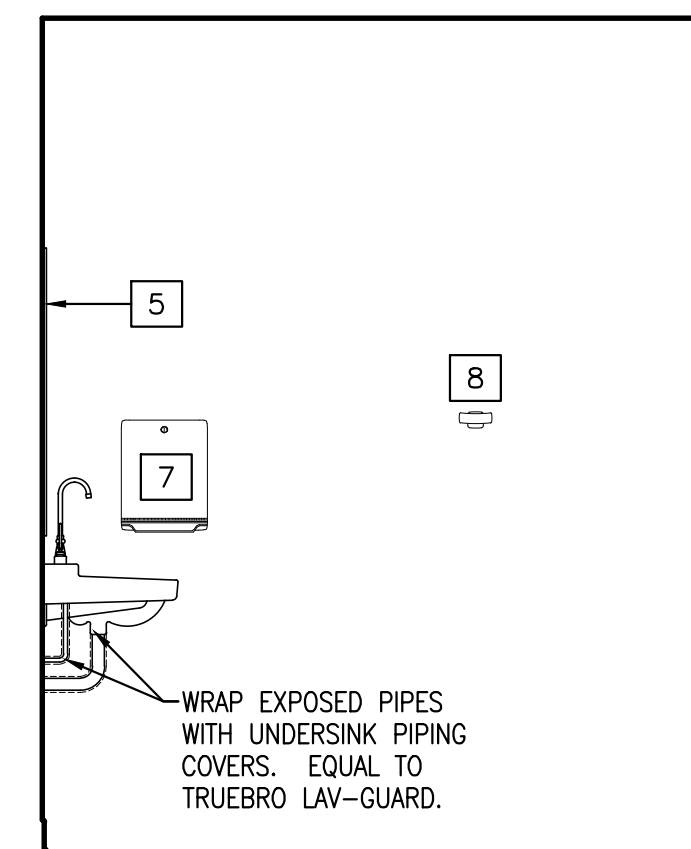


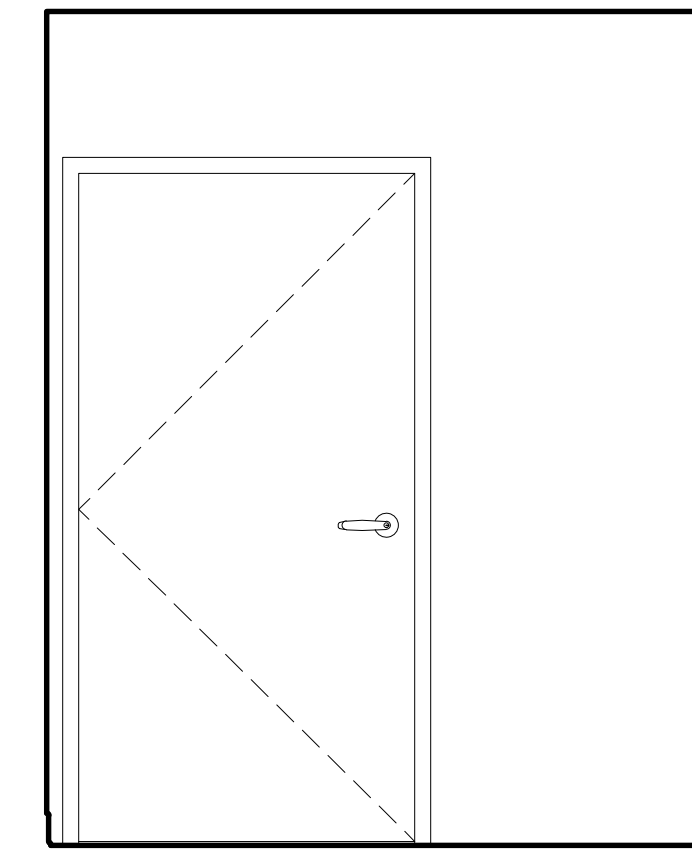
ELEVATION 'A'



ELEVATION 'B'



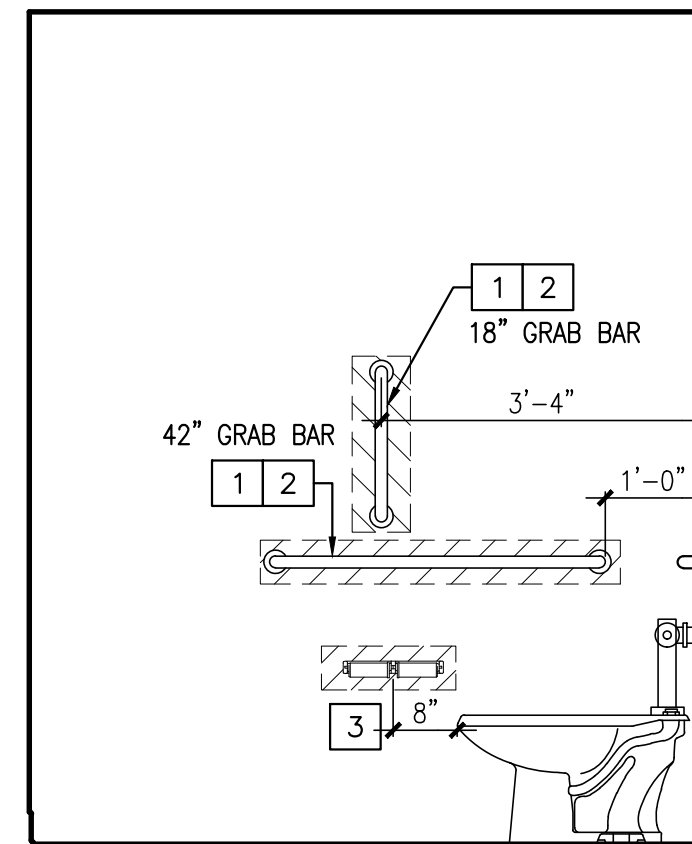
ELEVATION 'C'



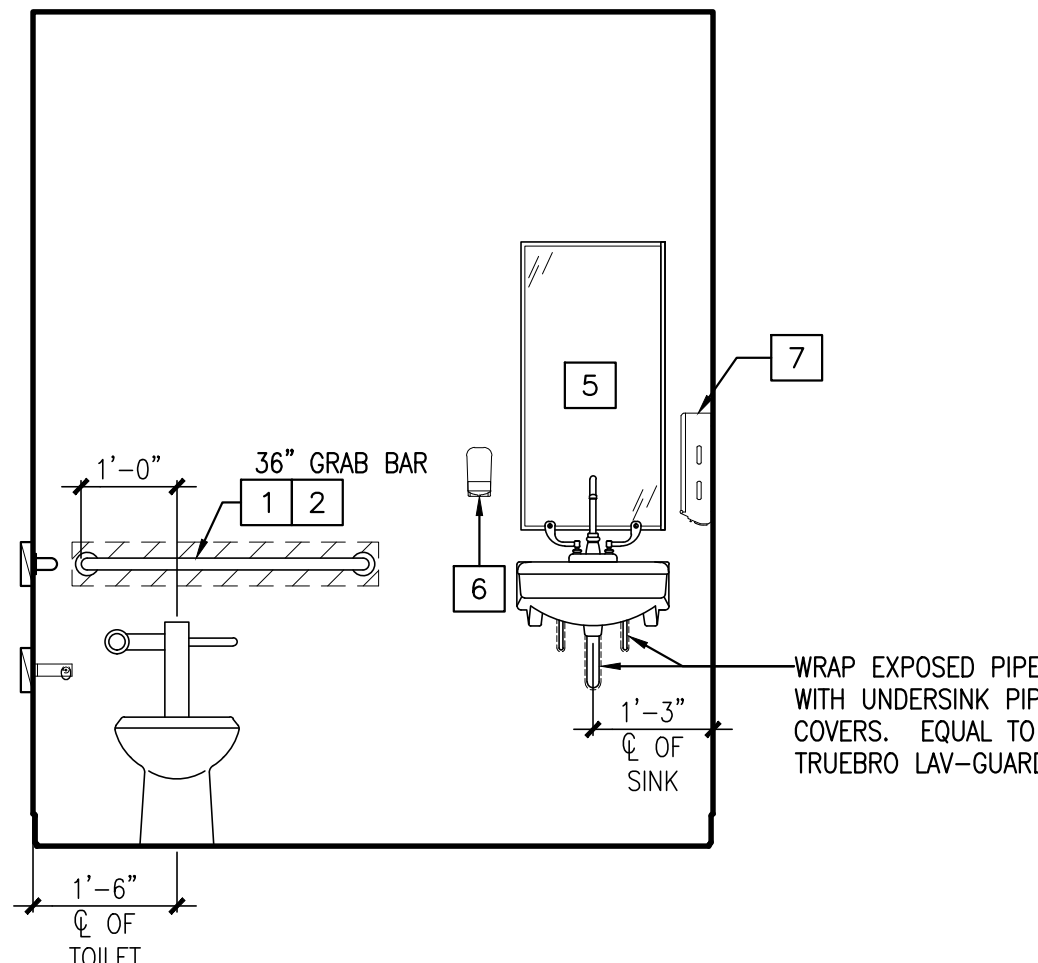
ELEVATION 'D'

1 INTERIOR ELEVATIONS @ WOMEN'S RESTROOM

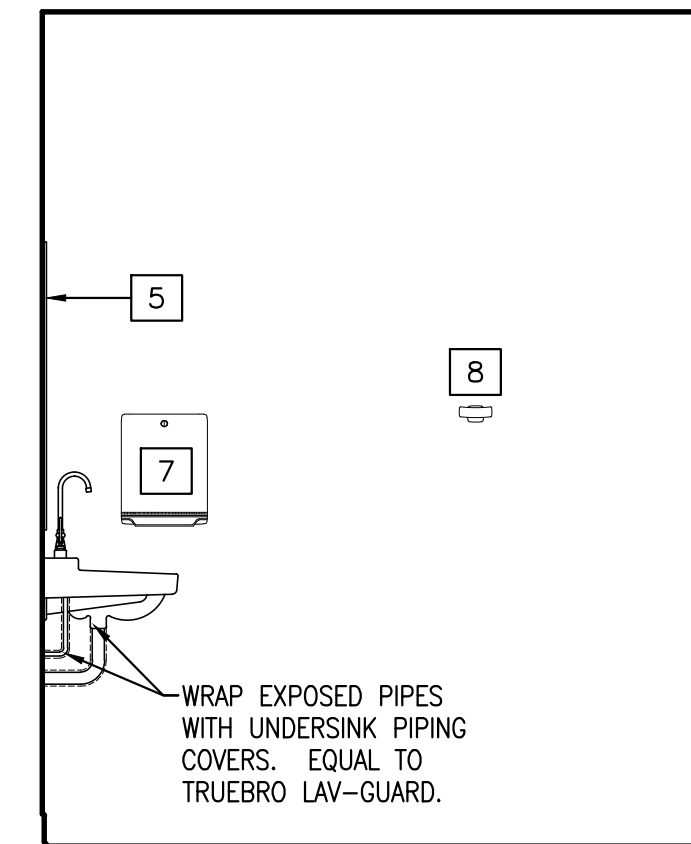
REFERENCED FROM: SCALE: 1/2" = 1'-0"



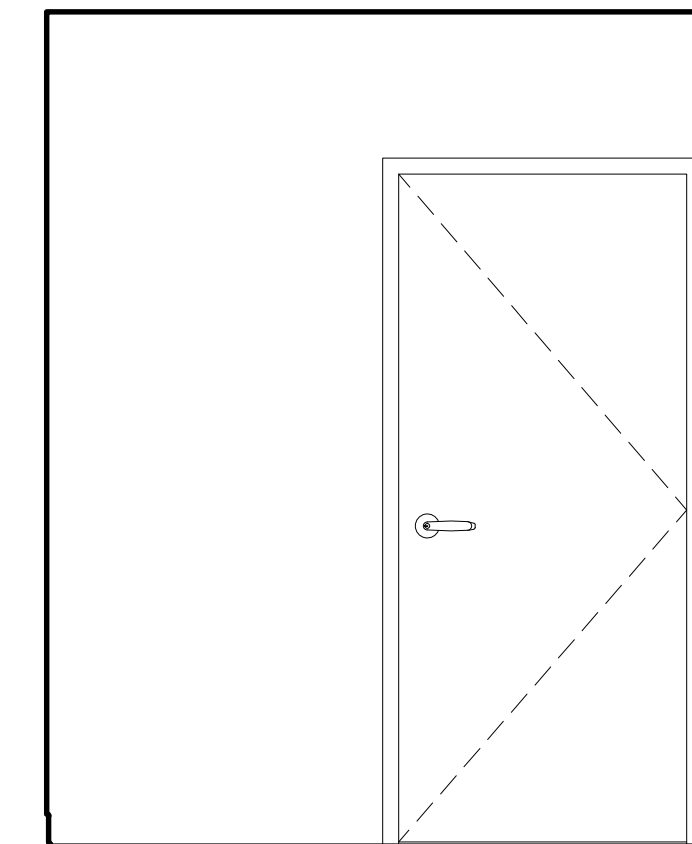
ELEVATION 'E'



ELEVATION 'F'



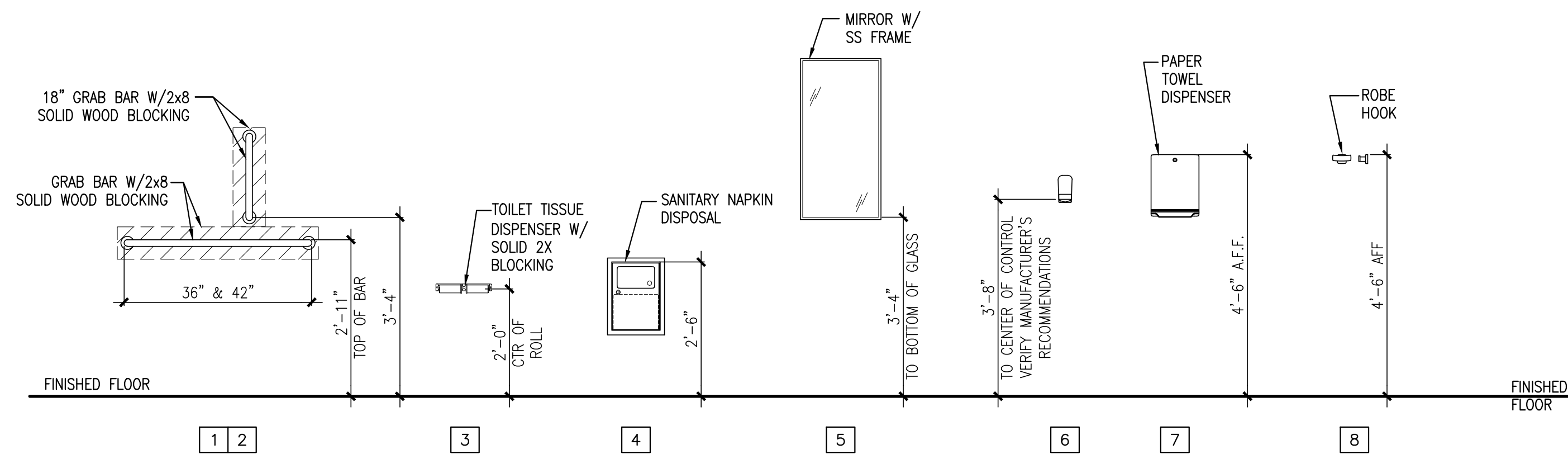
ELEVATION 'G'



ELEVATION 'H'

2 INTERIOR ELEVATIONS @ MEN'S RESTROOM

REFERENCED FROM: SCALE: 1/2" = 1'-0"

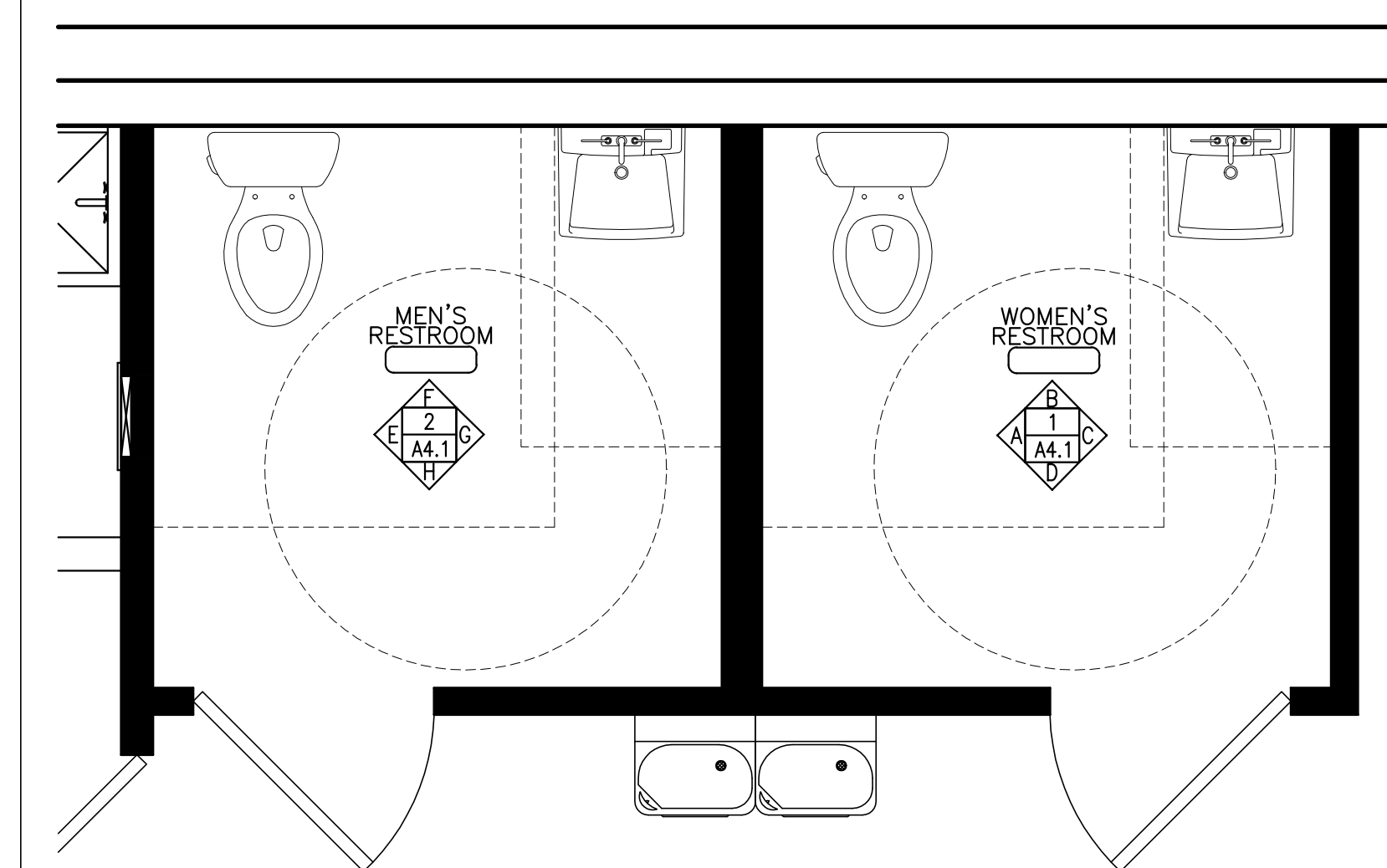


INSTALLATION HEIGHTS

TOILET ROOM ACCESSORY LEGEND

- 1 GRAB BARS
- 2 GRAB BAR ANCHORS
- 3 TOILET TISSUE DISPENSER
- 4 SANITARY NAPKIN DISPOSAL
- 5 MIRROR
- 6 SOAP DISPENSER
- 7 PAPER TOWEL DISPENSER
- 8 ROBE HOOK

GENERAL NOTE:
1. PROVIDE SOLID WOOD BLOCKING AS REQUIRED FOR ANY AND ALL TOILET ACCESSORIES

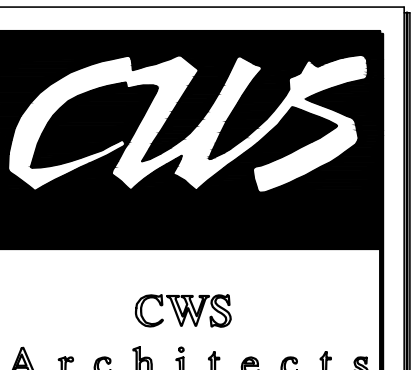


4 ENLARGED PLAN @ TOILET ROOMS

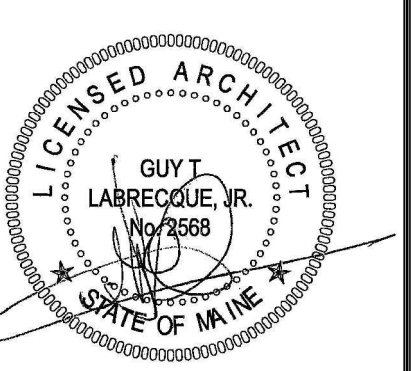
REFERENCED FROM: SCALE: 1/2" = 1'-0"

9 BATHROOM ACCESSORY LEGEND AND INSTALLATION HEIGHTS

REFERENCED FROM: SCALE: NTS



434 Cumberland Avenue
Portland, ME 04101
Phone: (207) 774-4441
Fax: (207) 774-4016
www.CWSarch.com



AARON'S RENOVATIONS
1041 BRIGHAM AVENUE
PORTLAND, MAINE 04101

SEI/AARON'S, INCORPORATED
5108 PIEDMONT ROAD, SUITE 202
ATLANTA, GA 30305

REVISIONS:	Date:	Description:

Drawing Title: **ENLARGED PLAN & ELEVATIONS OF TOILET ROOMS**
Scale: 1/2" = 1'-0"
Date: 02/19/2010
CWS Proj. No.: 09429

Drawing Number: **A6**