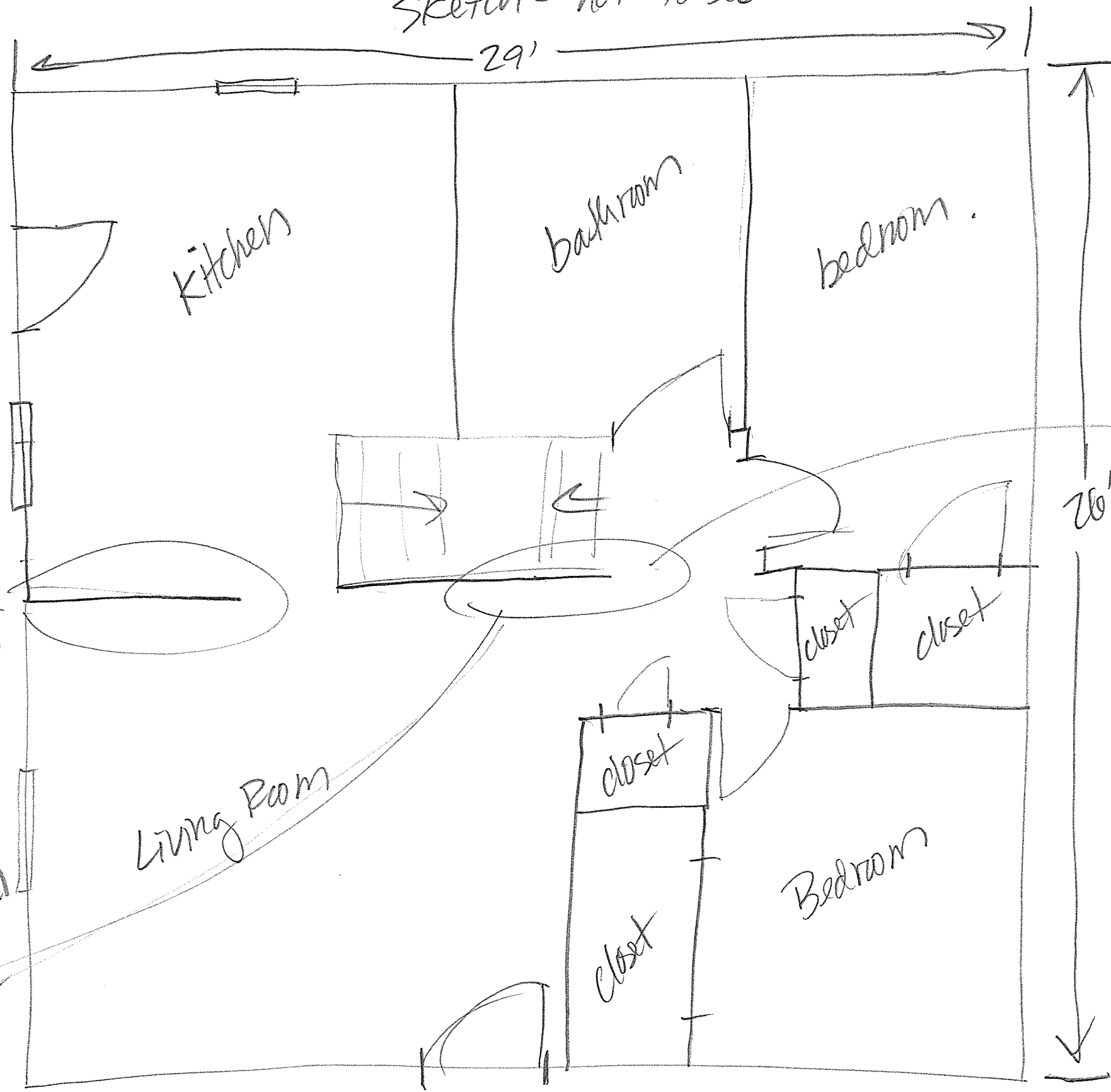


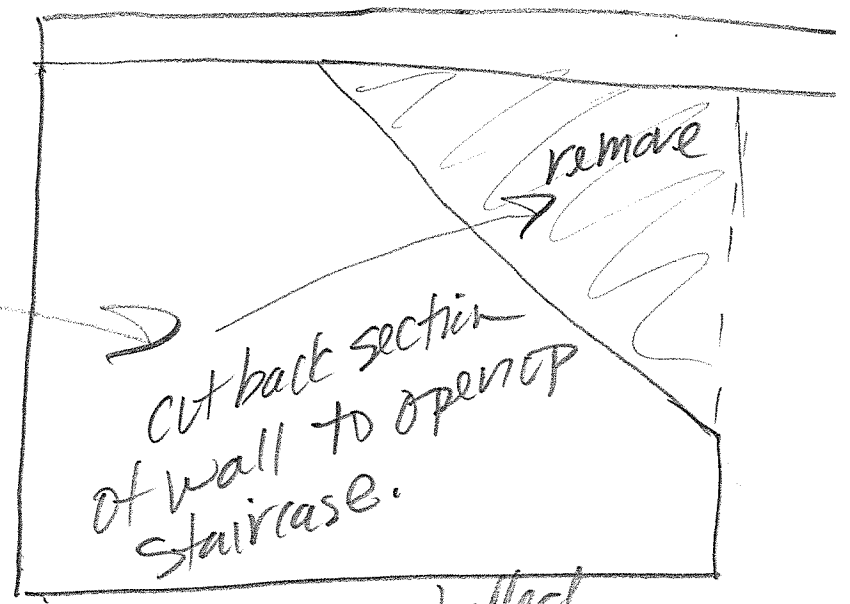
143 Holm Avenue, Portland, Maine
sketch - not to scale

1st floor - APPROX 754 sq ft.



Remove 1/2 wall
and install beam
for support.

cutback staircase
wall and install
beam for
support



cut back section
of wall to open up
staircase.

Beam installed
for support.

Remove ramp at front door
and rebuild steps to
side door.