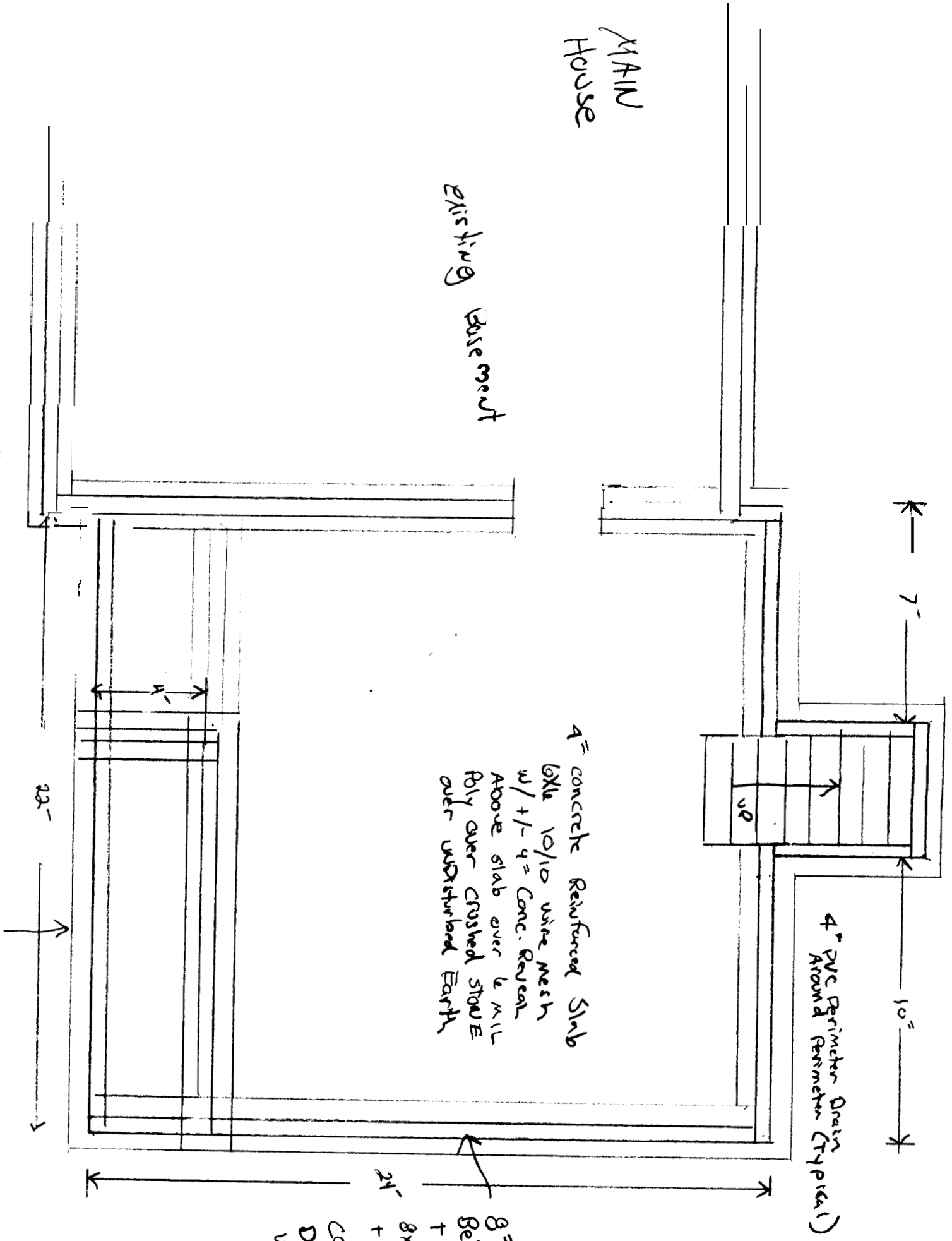


MAIN
House

existing basement



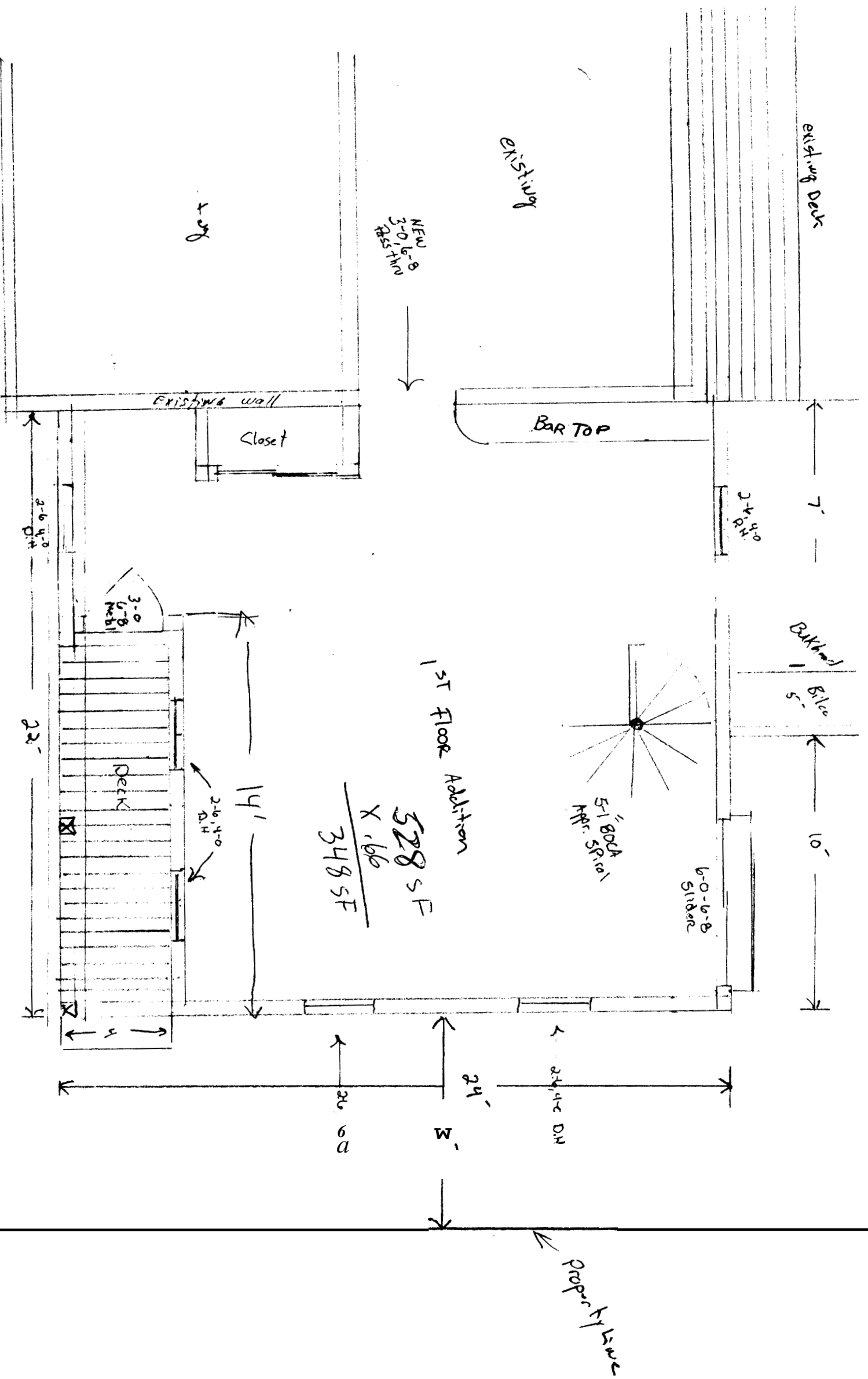
4" concrete Reinforced Slab
 6x6 10/10 wire mesh
 w/ +/- 4" Conc. Reveal
 Above slab over 6 mil
 Poly over crushed stone
 over undisturbed Earth

4" PVC Perimeter Drain
 Around Perimeter (Typical)

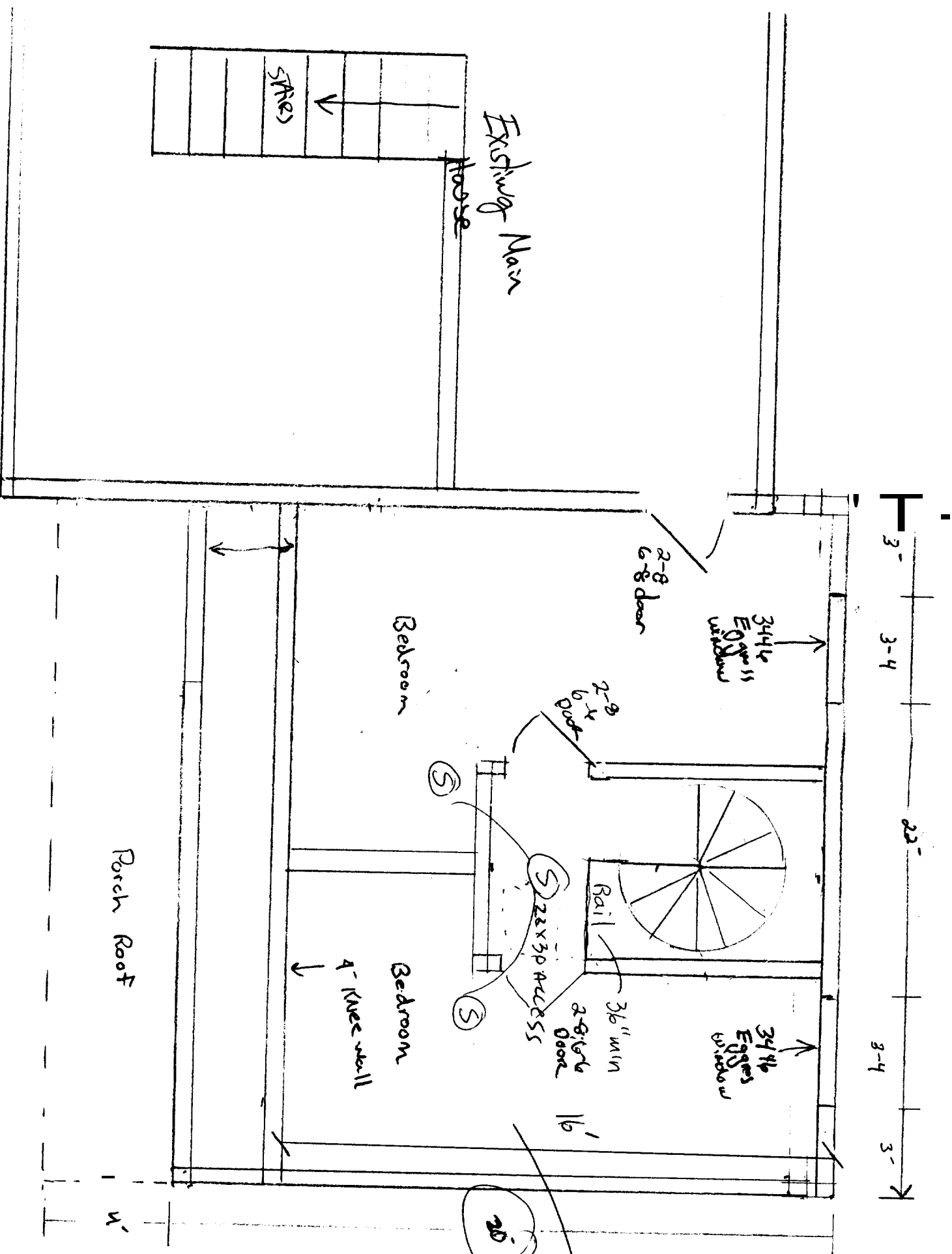
8" x +/- 8" concrete walls
 Below slab w/ 3000 PSI
 + #4 Rebar cont. w/ key
 8x15" w/ #4 rebar cont.
 + Anchor Bolts (1/2" x 12" @ 6' or .12" @ corners
 concrete reinf. Footings + 6" cutouts
 Drains: Damp-proof Ext.
 w/ xypex to grade

Foundation Plan

HANSON BUILDERS
 650-4426
 CHRIS HANSON RAYMOND, ME



HANSON BUILDERS
 (650-4426)
 CHRIS HANSON RAYMOND, ME



2nd Floor Plan.

Windows u Factor, 35 max

2/3 of Floor below
 $\Delta 352 = 16 \times 22'$

2nd Floor

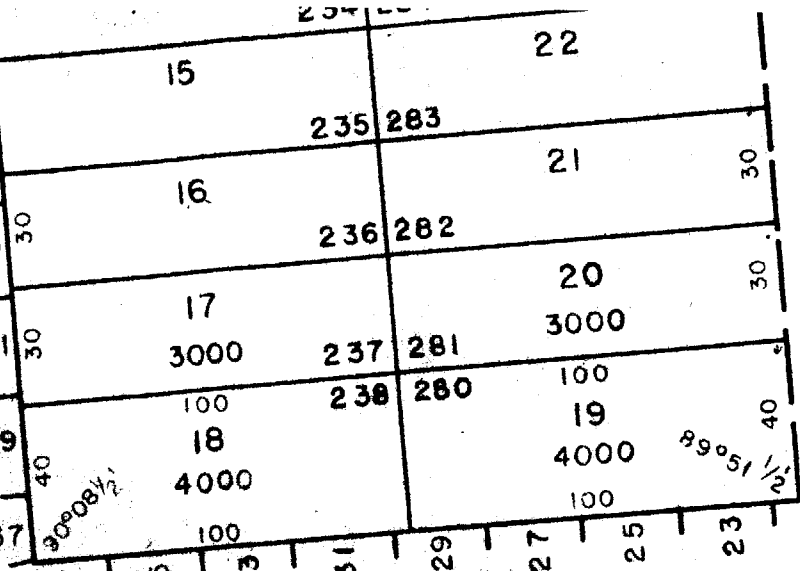
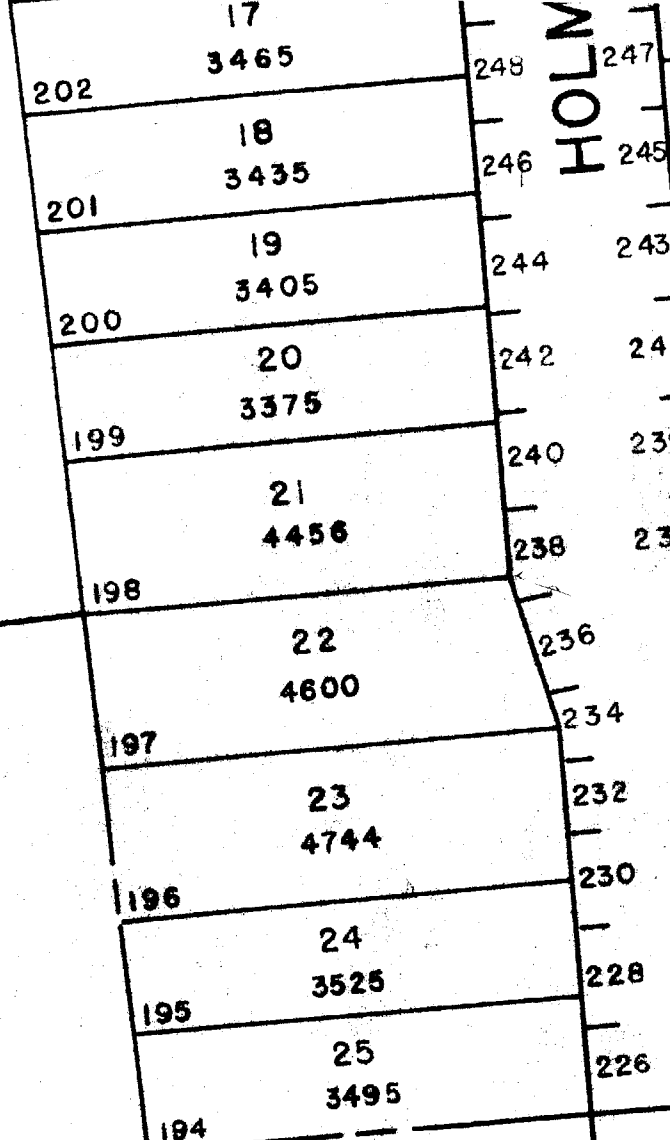
No cantilever of floor in Rear due to limit in the SF of the space

Sec. 14-90

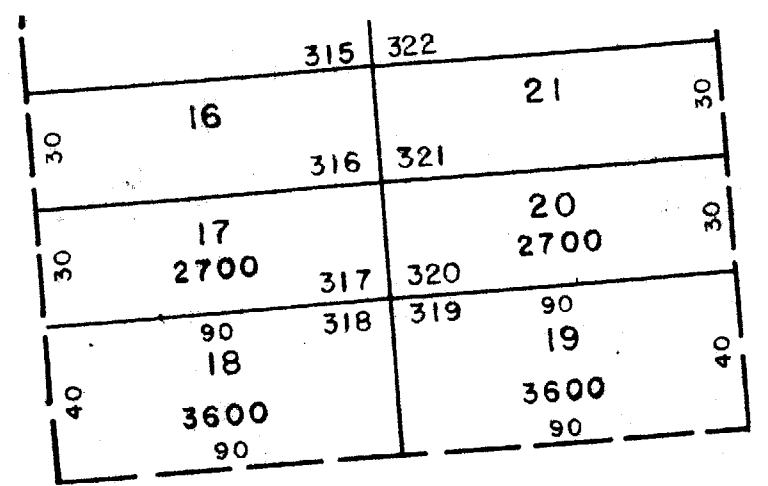
Side yard setback

8' for 1 1/2 stories

(B)



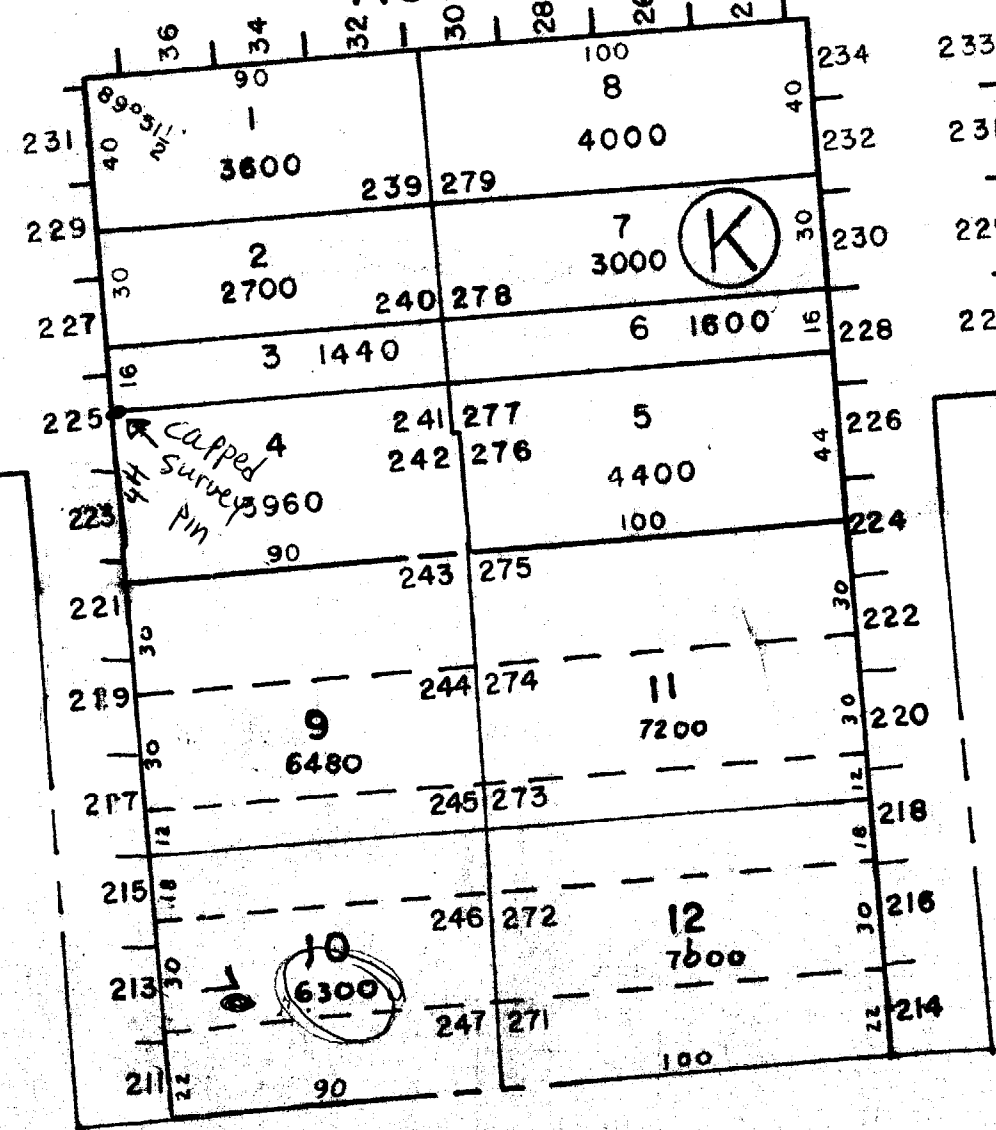
TAF



SHEET 270-B

SHEET 271-C

ROBIN



STREET

SHEET 273-B

PART OF 26 P.T.Co.

INSERT

SHEET 270-B

N

N 70°00'09" E

11 28.32

158.89

154.02

#7

#8

151

3035

60.7

F

30

30

40

30

30

30

30

30

30

30

30

30

22

22

22

30

30

30

40

30

30

30

30

30

30

30

30

30

30

30

30

30

30

30

40

30

30

30

30

30

30

30

30

30

30

30

30

30

30

30

40

30

30

30

30

30

30

30

30

30

30

30

30

30

30

30

40

30

30

30

30

30

30

30

30

30

30

30

30

30

30

30

40

30

30

30

30

30

30

30

30

30

30

30

30

30

30

30

40

30

30

30

30

30

30

30

30

30

30

30

30

30

30

30

40

30

30

30

30

30

30

30

30

30

30

30

30

30

30

30

40

30

30

30

30

30

30

30

30

30

30

30

30

30

30

30

40

30

30

30

30

30

30

30

30

30

30

30

30

30

30

30

40

30

30

30

30

30

30

30

30

30

30

30

30

30

30

30

40

30

30

30

30

30

30

30

30

30

30

30

30

30

30

30

40

30

30

30

30

30

30

30

30

30

30

30

30

30

30

30

40

30

30

30

30

30

30

30

30

30

30

30

30

30

30

30

40

30

30

30

30

30

30

30

30

30

30

30

30

30

30

30

40

30

30

30

30

30

30

30

30

30

30

30

30

30

30

30

40

30

30

30

30

30

30

30

30

30

30

30

30

30

30

30

40

30

30

30

30