

Markup Legend	
Delete Line	
Add Line	
Add Tee	
Add Elbow	
Add Coupling	
Add Head	
Delete Head	
Move Head	

COLOR/LINETYPE LEGEND	
BLUE LINES	= FEED TO FIXTURES (BATH, SHOWER, ETC.)
GREEN LINES	= INTERLEVEL CONNECTIONS
BLACK LINES	= SPRINKLER HEAD TO SPRINKLER HEAD.
— 1/2"	= 1/2" PIPE SIZE
— 3/4"	= 3/4" PIPE SIZE
— 1"	= 1" PIPE SIZE
— 1 1/4"	= 1-1/4" PIPE SIZE
— 2"	= 2" PIPE SIZE

SPRINKLER SYMBOL DEFINITION	
	XXX-XX(s1)(s2)
	SLOPED CEILING MAX. SLOPE OF 8:12 (33.7°) PITCH (MAY NOT APPLY)
	SLOPED CEILING MAX. SLOPE OF 4:12 (18.4°) PITCH (MAY NOT APPLY)
	MAXIMUM SPACING (TYP)
	SPRINKLER MODEL (TYP)
	HEAD SYMBOL (TYP)

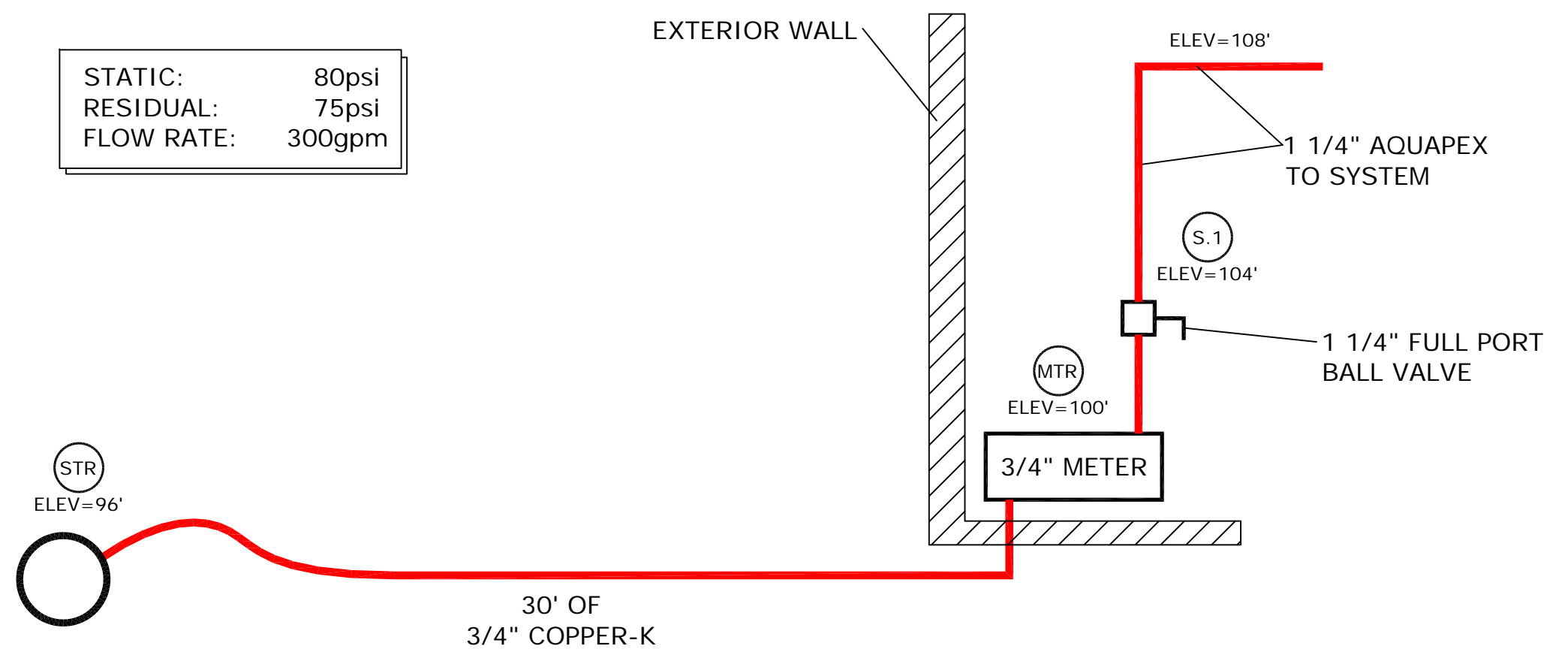
**Table F002-1**  
**Multipurpose Fire Safety Systems**  
 The Uponor Residential Fire Safety System is a residential fire protection system installed in combination with the cold side of the domestic potable water system. Only licensed contractors trained by Uponor can install this system.

**What to do if Changes are Required**  
 If any features or obstructions require the addition or deletion of sprinkler heads, or significant relocation of sprinkler heads, contact the Uponor Design Department to determine if observed changes require a redesign (888.594.7726).

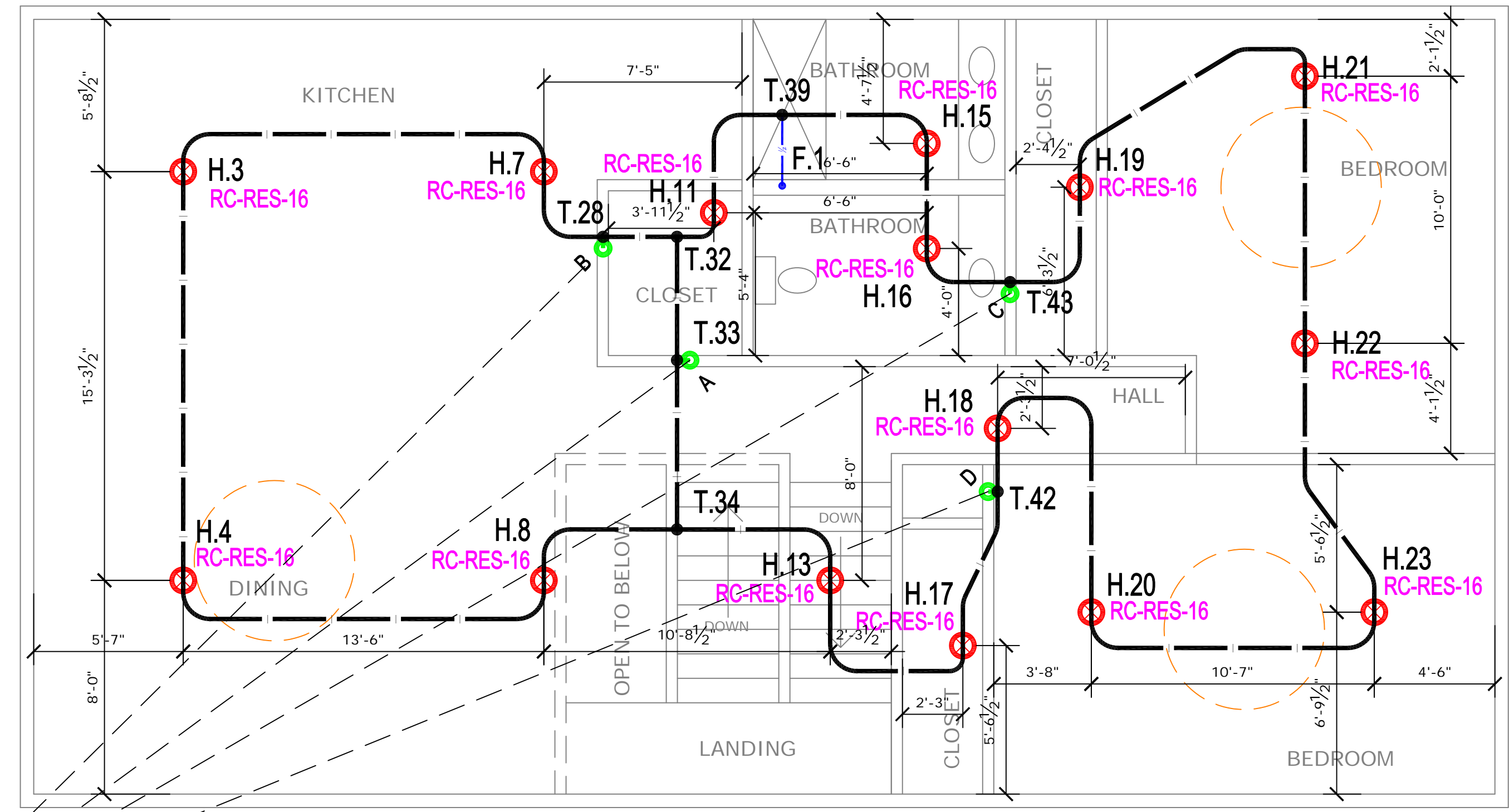
MOST HYDRAULICALLY REMOTE HEADS			
HEAD #	GPM	PRESSURE REQ'D AT STREET	
1 HEAD H.22	13	35.22	
2 HEAD H.22 & H.21	26.0233	64.86	

1st Floor 8 Sprinklers  
 2nd Floor 15 Sprinklers

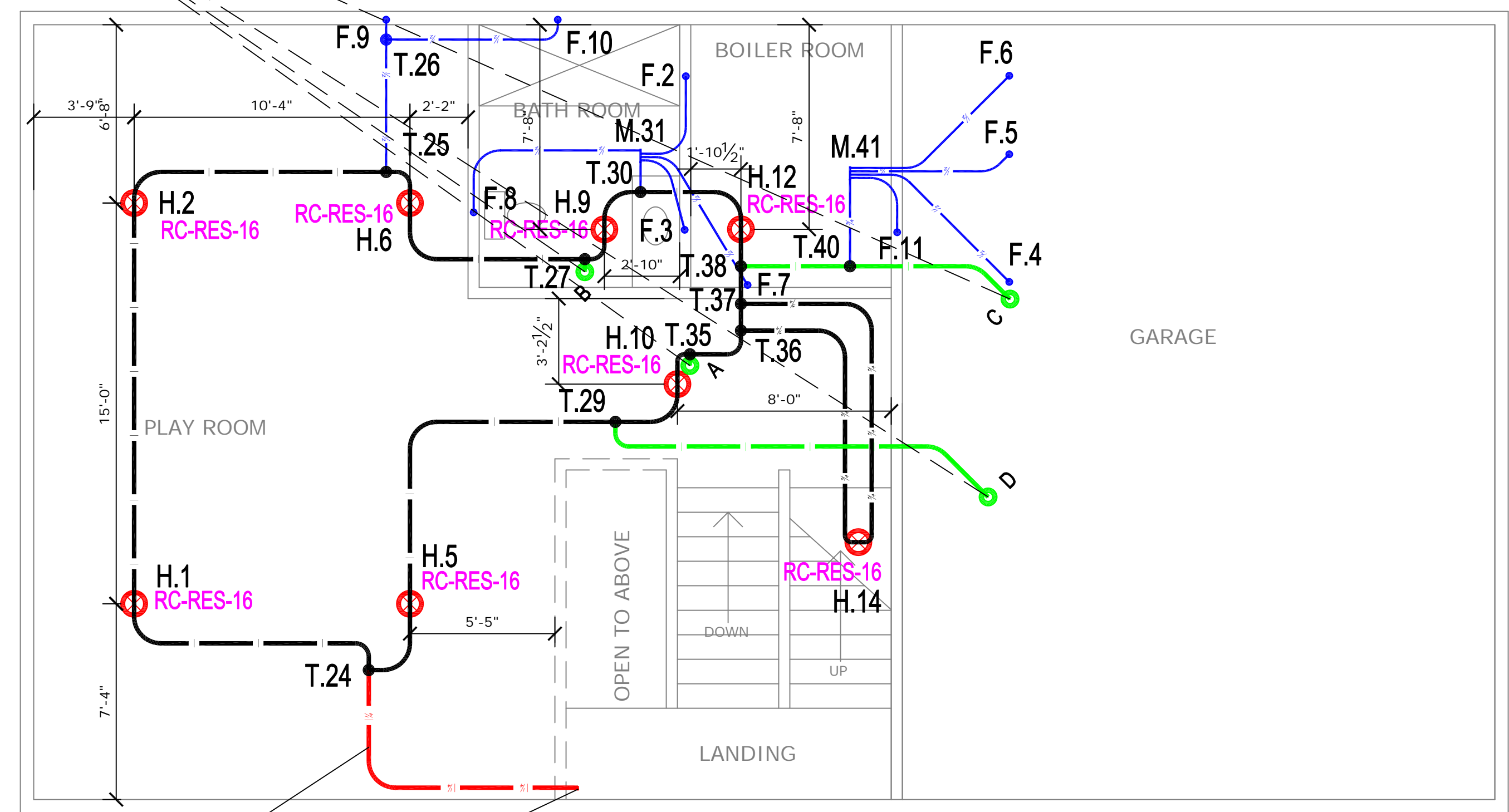
--- 23 SENJU SPRINKLER Model RC-RES Flat Concealed Pendant Quick Response K=4.9, 162F°, 7/16" Orifice, Maximum Spacing 16"x16" Sprinkler head demand: 13 gpm @ 7.04



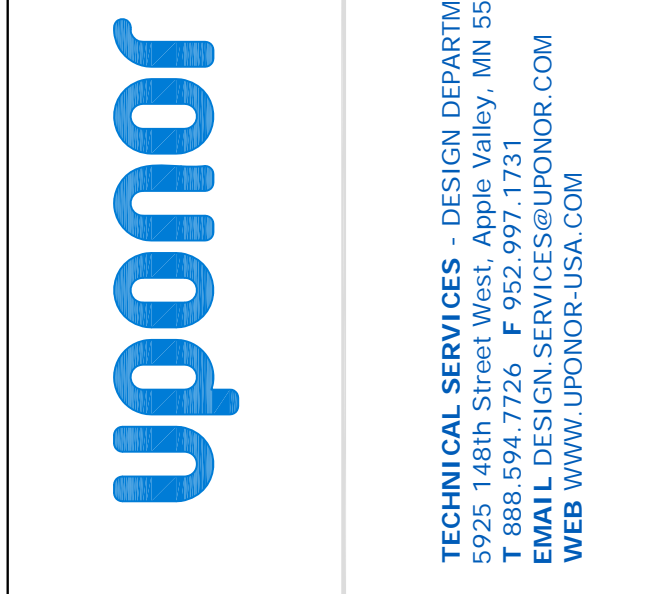
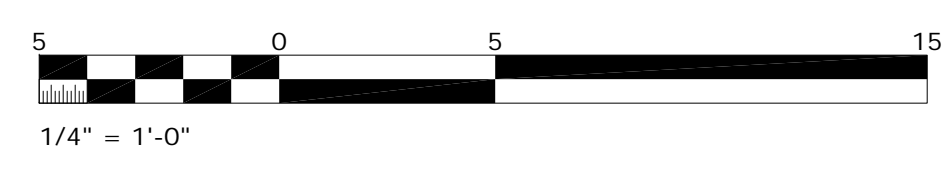
**3** WATER SERVICE DETAIL  
 F100 NTS



**2** SECOND FLOOR  
 F100 1/4" = 1'-0"



**1** FIRST FLOOR  
 F100 1/4" = 1'-0"



**DISCLAIMER**  
 THIS SERIES OF DRAWINGS, INCLUDING SCHEDULES, SHOWS AND NOTES, IS THE PROPERTY OF UPONOR, INC. TECHNICAL SERVICES - DESIGN DEPARTMENT. THEY HAVE BEEN PREPARED TO MEET PROFESSIONAL STANDARDS OF DESIGN AND CONSTRUCTION. BEFORE STARTING ALL WORK, THE CONTRACTOR SHALL VERIFY ALL DIMENSIONS, MATERIALS, PLUMBING AND/OR FIRE CODES USED. REPORT ANY ERRORS AND/OR DESIGN CHANGES TO UPONOR, INC. TECHNICAL SERVICES - DESIGN DEPARTMENT. DESIGN CHANGES ARE NOT REPORTED BACK TO UPONOR, INC. IT IS THE SOLE RESPONSIBILITY OF THE INSTALLER TO ENSURE SYSTEM DESIGN WILL FUNCTION IN ACCORDANCE WITH ALL APPLICABLE CODES AND REGULATIONS. UPONOR, INC. IS NOT RESPONSIBLE FOR ANY DAMAGE OR HARMFUL CONSEQUENCES THAT MAY RESULT FROM THE APPLICATION AND INCORRECT INTERPRETATION OF THESE DRAWINGS.  
 SALES REP.

**JERRIER RESIDENCE**  
 243 TAFT AVE  
 PORTLAND, ME 04103

NO.	DATE	REVISIONS	DESCRIPTION

**SHEET DESCRIPTION**  
 FIRST & SECOND FLOOR

**SHEET NUMBER**  
**F100**